

**THIS MOBILE HOME, "Cajun High Rise" is located on the grand Chenier Highway and provides a good view of the elevation now required by FEMA regulations for trailers and homes in lower Cameron Parish.** (Photo by Cyndi Sellers.)



**JOEY DOCKINS (left) and Charles "Charlie" Olivier (right) are shown above with the plaques they received at the recent LWRA banquet held in Alexandria.**

## Water Dist. employees given state awards

Two Cameron Parish Water and Wastewater District 1 employees received state honors at the annual banquet of the Louisiana Rural Water Association in Alexandria on Wednesday, July 16.

Charles "Charlie" Olivier was named the Wastewater System Operator of the Year, South Louisiana.

Joey Dockins was named the Water System Operator of the Year, South Louisiana.

The awards were presented at LWRA's annual training and technical conference.

Olivier and Dockins were selected at this year's winners for their dedication to providing safe drinking water and/or helping to maintain a cleaner environment through their efforts in the water and/or wastewater industry in Louisiana.

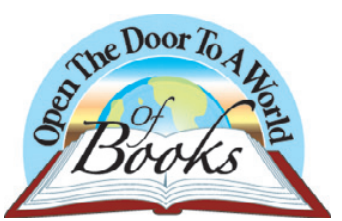
LRWA is a non-profit organization established in 1978 to aid small water and wastewater systems through training and on-site technical assistance.

## Festival elects officers

Fur Festival officers were recently elected. The officers are: President, Penelope Richard; Vice Presidents, Joann Nunez and Ryan King; Secretary, Courtnie King; Treasurer, Stephanie Richard; and Members-at-Large, Talesha Bertrand and Freddie Richard.

The next festival board meeting is scheduled on Aug. 24, at 5 p.m. at the Creole

Fire Station. The festival will be held on Jan. 9-10.



**PATRICK GORDON, left, director of the St. Gregory Catholic Church Choir of Chicago, is pictured with Kathleen Sanner and Father Roland Vaughn at a concert put on by the choir at St. Peter's church in Hackberry on June 27.**



**THE CHOIR OF St. Gregory the Great Catholic Church of Chicago, IL. gave a concert at St. Peter the Apostle Catholic Church in Hackberry on June 27. Each member paid their expenses in coming. The choir presented Kathleen Sanner with a check for the music ministry at the church. A gumbo supper was served to the visitors after the concert.**

## Benefit to be held for Batts on Aug. 24

A benefit will be held on Sunday, Aug. 24 beginning at 10 a.m. at the Grand Chenier Park to help with medical expenses of Julie Batts, daughter of Mona and Wayne Batts, of Creole.

Julie was diagnosed with Guillain-Barre' Syndrome (GBS) over a year ago. GBS is a disorder in which the body's immune system attacks the nerves outside the brain and spinal cord and rapidly leads to paralysis of the legs, arms, breathing muscles, and face.

Since her diagnosis, her recovery has included an intense year of occupational and physical therapy. Julie will require at least another year of therapy to return to her previous quality of life.

Several events will take place on the day of the benefit, including a silent and regular auction, bake sale, barbeque chicken plate lunches, raffle drawing, and live music. Refreshments and beer will be sold.

For more information, please contact Dan Nunez at 542-4382

## Stansel on mission trip to Brazil

Seven members of the of the Life Church departed from the airport in Houston on July 11. They were joining another group of 140 volunteers in the Southern Baptist Convention going to Brazil to work with Brazilian churches. They plan to do Vacation Bible School, sports camps, construction projects, medical assistance projects and street and door to door evangelism. Three new churches will also be constructed.

One of the volunteers is Kaleigh Stansel, graduate of Hackberry High School. She is the daughter of Guy and Pauline Stansel of Hackerry.

## Aug. 6 deadline to register here

Election for U. S. Senator and U. S. Representative will be held on Sept. 6. In order to vote in this election you must be registered by Aug. 6.

You can register by mail (by requesting a form) or you can come to the Cameron Registrar of Voters office located in Cameron behind the courthouse. If you have questions, please call 775-5493, according to Suzanne Sturlese, Registrar Cameron Parish.



**SHELTER FROM The Storm - A boat enters the Calcasieu Ship Channel on Tuesday afternoon to dock in Cameron ahead of the effects of Hurricane Dolly.** (Photo by Cyndi Sellers.)

# Dolly passed us by

By CYNDI SELLERS

The first named storm to enter the Gulf of Mexico this year, Hurricane Dolly, caused little impact on the Cameron Parish coast. Expected 3 foot tides did not occur, although seas offshore were 8-10 feet, keeping smaller boats docked.

Dolly did bring back unpleasant memories of Hurricane Rita, as it followed a similar path across the Yucatan Peninsula and was projected to hit the lower Texas coast. Unlike Rita, it kept to the forecast path and moved in near Brownsville, Tex. on Wednesday afternoon. As everyone remembers, Rita kept turning northerly, defying early predictions.

For most people the only indication that there was anything brewing was a dramatic tropical sky, heavy surf, and much needed rain. In Cameron, there was some water in Marshall Street near the court house, but this is not unusual.

Cameron Parish Office of Emergency Preparedness Director Clifton Hebert was on duty watching the storm and reported on Wednesday that tides were slightly above normal, especially farther west, but no roads were flooded and no further impact was expected. At Holly Beach, the tides reached near the newly restored Parish Road 512, but had not overtopped it on Wednesday morning.

## Dugas fishing rodeo results

The annual Dugas Landing fishing rodeo was held July 5 and 6. The results are:

Flounder - first, Larry Carrier, 5 lbs.; second, Carla Scarborough, 3.5 lbs.

Speckle Trout - first, Justin Ledoux, 4.14 lbs.; second, James Blocker, 4.22 lbs.

Redfish - first, Russell Burleson, 33.14 lbs.; second, Scott Viator, 27.2 lbs.

Hardhead Catfish - first, Morgan Bourgeois, 2.3 lbs.; second, P. J. Morales, 2.0 lbs.

Largest Fish - Russell Burleson, 33.14 lbs.

Grand Prize - Barbara Ardoin, 33.14.

## 600 attend co-op annual meet

More than 600 people including more than 376 registered Jefferson Davis Electric Co-op members attending their annual membership meeting July 14, at the Jennings High School Cafetorium, heard Louisiana Public Service Commissioner Dale Sittig praise the Co-op board for its leadership and congratulated the Co-op management employees and members for a remarkable recovery after Hurricane Rita.

Sittig advised those in attendance that while oil has topped \$140 a barrel, gasoline has hit \$4 a gallon and health care has increased 195 percent over the past 25 years, electricity prices have only increased about 27 percent nationally while residential electricity demand has skyrocketed. He noted JDEC offers some of the most stable and economical electric rates in the region.

But the District 4 Commissioner also warned JDEC members that new environmental rates are driving up the costs of fuels such as coal and natural gas, which will impact future electric bills. JDEC Board President E. Garner Nunez welcomed the



**LEADING EDGE of the first rain band from Hurricane Dolly crosses Cameron on Tuesday morning.** (Photo by Cyndi Sellers.)

## W. Cal Hospital opens wound care center

Everyone has heard that time heals all wounds, but the truth is that without advanced therapies some wounds can take years to heal. Those who do not respond to treatment can, in extreme cases, lead to amputation. West Calcasieu Cameron Hospital is pleased to announce the opening of its wound healing center offering the specialized wound healing care.

"With the rising rate of diabetes, there is a great need for a specializing care center that can treat the ulcers associated with the disease as well as help patients with other skin, bone and tissue conditions, caused by illness or injury", says Bonnie Cappel, Program Director of the Wound Healing Center. "The center's doctors and clinical staff are skilled in the latest therapeutic methods in wound management and stay abreast of leading information through continuous training".

To establish the center, West Calcasieu Cameron Hospital partnered with

Florida-based National Healing Corporation, which manages wound healing centers nationwide. These centers boast an average healing rate of 80 percent attained in 12 to 16 weeks of therapy.

Likely candidates for treatment including those suffering from diabetic ulcers, pressure ulcers, infections, compromised skin grafts and flaps and wounds that haven't healed within 30 days. The center's hyperbaric oxygen chambers can also be used to treat patients suffering from such uncommon ailments as cyanide poisoning, gangrene, carbon monoxide poisoning, brown recluse spider bites and "bends," or decompression sickness.

Patients covered by Medicare, Medicaid and most insurance plans may self-refer to the Wound Healing Center of West Calcasieu Cameron Hospital; however, one of the center's missions is to build relationships with patients' primary care physicians.

Cont. on Pg 2

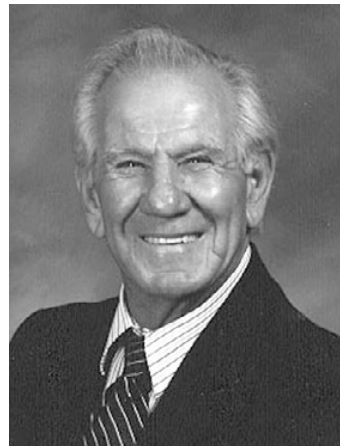
## Meeting set

Cameron Parish Waterworks District #10 will have its next monthly meeting on Monday, Aug. 11, at 6 p.m. at the Gravity Drainage Board in Johnson Bayou.



**DO YOU REMEMBER? The Belgian freighter Anvers caught fire and burned off the coast of Cameron 40 years or more ago. After the crew abandoned it, Russel Broussard and his brothers boarded and claimed it for salvage. After the fire burned out, the ship was dragged to a site north of Cameron. There followed extensive litigation as to who now owned the ship. Broussard died on July 21 in Lake Charles.**

# Funerals



**JOSEPH RUSSEL BROUSSARD**

Joseph Russel Broussard journeyed to heaven on July 21, from his Lake Charles, home surrounded by his loved ones. Born in Erath, in 1928 to Claudy and Louise Boullion Broussard, he attended Creole High School and graduated from Lafayette High School.

A proud member of the U. S. Navy from 1945 to 1950, he served as Harbor Master on Midway Island and obtained the rank of Boatson's Mate while serving on the battleship USS Iowa.

He was a boat captain and platform operator for Phillips Petroleum Company and retired after 35 years of service. He owned Russel's Net Shop servicing the area shrimp industry. He held a Master Captain's License. In 1960, he and his band of brothers rescued the burning Belgian freighter Anvers abandoned in the Gulf of Mexico.

He married Lurlie Mae Broussard in 1950 and they moved from Cameron, to Lake Charles with four children after surviving Hurricane Audrey in 1957. Here, they raised seven children until her death in 2002.

Blessed to find love anew, he married Beverly Theriot in 2003 and they enjoyed life in Hemphill, Tex., beneath the beautiful pine forests on Toledo Bend Lake. He was a member of St. Martin de Porres Catholic Church upon his return to Lake Charles in 2005.

He was a lifetime member of the Veterans of Foreign Wars and Knights of Columbus. He was a devoted LSU Tigers, Houston Astros and John Wayne fan.

Those who have gone before him to welcome him into Heaven are his parents; first wife; step-son-in-law, Ray Stevens; step-grandson, John Baylon; nephew, Robert Broussard; and nieces, Bobbie Lane Boudoin and Shirley Roux.

Left on earth to cherish his memory is his wife, Beverly; four sons to honor his courage, Kirk Broussard (Janice) of Katy, Tex., Mark Broussard (Gweneyette) of Sugarland, Tex., Blane Broussard of Lake Charles, and Todd Broussard (Nancy Cline) of Jackson Heights, N. Y.; three daughters to dream of his tenderness, Lisa Broussard (Fred Patrick) of Vinton, Tina Fontenot of Seabrook, Tex., Michelle Stone (Rob) of Dallas, Tex.; one brother to admire his loyalty, Sterling Broussard (Alice) of Lake Charles; two sisters to honor his caring, Velda Roux (Ashburn) of Grand Lake and Dale Boudreaux (Galton) of Oak Grove; 11 grandchildren to admire his wisdom, Garret Broussard (Olivia Moreau), Amanda Broussard, Donovan Guillory, Justin Broussard, Tyler and Austin Fontenot, Travis, Evann and Conner Broussard, Addie and Sutton Stone; one great-grandchild to learn of his strength, Taylor Broussard

retiring from the Air Force after 26 years as a military police officer. He then began his job with the Calcasieu Parish Sheriff's Office as a crossing guard. He was a member of VFW Post 8107 in Sulphur and a member of the Cajun Music Association. He was a member of First Baptist Church of Carlyss.

He is survived by his wife, Mary L. Little, of Ragley; one daughter, Rebecca Benoit and husband Carl of Lake Arthur; five sisters, Nell Perrodin of Hackberry, Gloria Swire of Grand Lake and Billie Ogea, Betty Manuel and Linda Faye Little, all of Houston; and two brothers, Ray Edgar Little of Hackberry and James C. Little of Sulphur.

His funeral was held Monday, July 21, in Johnson Funeral Home, The Rev. Steve Shirley officiated. Burial was in Mimosa Pines Cemetery South in Carlyss.

## JOHN STELLY

John Stelly, 58, died Friday, July 18, 2008, in his residence.

He was born in Lafayette and resided in Hayes.

Survivors include his wife, Lola Irene Stelly; parents, Summa Lee Stelly and Pansy Susan Stelly; sons, John Stelly Jr. and wife Tonya of Hardin, Tex., Summa Stelly and wife Jennifer of New Orleans, and Eric Stelly and wife Christina of Grand Chenier; stepdaughters, Charla Richards of Oregon, and Karen Barker and husband Don of West Virginia; brothers, Stephen Stelly and Dee Stelly of Winnie, Tex., Marc Stelly and Judi Moore of Mauriceville, Tex., and David Stelly of Baton Rouge; and six grandchildren.

His funeral was held Sunday, July 21, at Hixson Funeral Home in Lake Charles. Burial was in Hayes Cemetery.

## JDEC CO-OP

Cont. from Pg. 1

Both of them were re-elected to seats on the board without opposition. Kirk Weldon received 188 votes to incumbent Robert P. Sarver's 177 votes to win the District 2 election.

Also serving on the board of directors are Webster James Todd Jr., Joseph L. Tupper Jr., Richard J. Byler, John Berken and Charles S. Hackett.

In his report to the members, Co-op Manager Mike Heinen noted that JDEC continues to rebuild and improve its 1,584 mile distribution system since Hurricane Rita and hopes to soon begin work on the Cameron office destroyed by the 2005 storm. JDEC is also battling efforts by FEMA to take back some of the funds it provided for that rebuilding effort and he commented that work on the Cameron office has been delayed while flood elevation maps are finalized and approved.

Heinen, who also serves as president of the board of directors of the Association of Louisiana Electric Co-ops that provides statewide communications, emergency response, governmental and employee training services, reported American consumers and their reliable supply of economical electricity is being threatened by "a perfect storm of greater demand for resources, higher fuel costs and federal emission mandates."



## Dealing with unresolved issues concerning grief

By SUE CRISE

The other day I was talking with a friend and she asked me about my parents. I responded with details about my mother, where she lived and how old she was. I realized later that I did not give any information about my father or even mentioned him.

I'm not sure why I responded this way, except to say I have unresolved feelings. My dad died of a heart attack on July 29, 1998. We are coming up on the 10th anniversary of that date. Anniversaries, or significant dates, can affect us emotionally. Sometimes we don't even realize how we feel until much later.

My dad was almost 71 when he died. When I looked at him, he seemed much older. He could hardly walk without support and was not eating right. Some days he did not eat at all, but "drank" his meals. His drink of choice was usually beer or bourbon; the sometimes together. Occasionally, he would drink a can of "Ensure" to get some nutrition.

If you have lived with someone who has these same habits, then you understand what I'm talking about. If not, then count your blessings. There is not any nutritional value in beer or bourbon, so my dad lost weight and muscle tone. His other medical conditions were not improved by this type of diet. Dad also suffered from glaucoma, cataracts, digestive problems, energy loss, and high blood pressure, just to name a few. Did I mention that he was also a smoker?

These two habits contributed to an early death. Some would say that 70 is not early, but in these days and times, folks are living longer and healthier, as long as they are making healthy choices in their lives.

Some of us grieve by crying or talking with others. In the months after Dad's

death, I talked with my five brothers and sisters to see how they were doing. All of us suffered some type of depression after Dad died.

I felt depressed because I could see my Dad was ill, but he would not allow us to do anything for him, other than take him for doctor's appointments. I suffered some guilt because we did not take action to get him more help.

If you are grieving for someone or something that is no longer available to you, then recognize that grieving is the first step towards feeling better. According to WebMD.com, grieving can be treated by "Social support, good self-care, and the passage of time are usually the best medicine for grieving."

But if you find that your grief is making it difficult to function for more than a week or two, contact a grief counselor or bereavement support group for help."

If you are wondering if I went to counseling, the answer is no. Whether this was the correct choice is hard to say after 10 years. However, I did talk with family members as a form of counseling and I also had my pastors who prayed with me - two very important aspects of our lives - God and Family.

Let Freedom Ring



The Wizard says, "There's no place like USA.gov." USA.gov. Your official source for government info. 1 (800) FED-INFO

### -The CAMERON PILOT- (USPS 086980)

Telephones: (337)786-8004 or (337)786-2870

Jerry and Joy Wise, Editors & Publishers; Jeffra Wise DeViney, Advertising Manager; Shirley Johnson, Production Manager; Julie Fletcher, Crystal Nix, Tina Poole, Dustin Royer, and Dawn Spears, Staff Members

The Cameron Pilot, 110 Asa St., P.O. Box 1486, Cameron, La. 70631. Published Weekly. Entered as periodical mail at Cameron, La., 70631 and Lake Charles, La., 70601. Post Office, Periodical Postage paid.

POSTMASTER: Send address changes to: The Cameron Pilot, P.O. Box 995, DeQuincy, La. 70633.

Subscription Rates: \$23.00 a year (tax included) in Cameron & Calcasieu Parishes; \$25.40 elsewhere in La., \$33.60 elsewhere in USA.

### LAWRENCE JOSEPH LITTLE

Lawrence Joseph Little, 74, of Carlyss, died Thursday, July 17.

Mr. Little was born in Hackberry and lived in Sulphur following his career in the military. He served in the Navy and Army before

## THE CAMERON SALTWATER FISHING FESTIVAL

Grand Chenier Park  
Grand Chenier, LA  
August 8 & 9, 2008



It doesn't get any better than this!

Along with all of the inshore activities we will again be having our Saltwater Fishing Tournament, with three fishing (3) divisions for the adults to compete in. . .

- Offshore Division • Bay and Surf Division • Scuba And A

- Junior Division (For those anglers 15 years or younger)

We will again be having the CAMERON SALTWATER FISHING FESTIVAL REDFISH CHALLENGE.

The Redfish Challenge has a team tournament format where teams will be fishing for two (2) Redfish per day, between the slot size limit of 20 inches to 27 inches, over the two (2) days of the Festival. Contestants must use all means to weigh fish in alive, dead fish will be weighed but a 1/2 pound penalty per dead fish weighed in will be subtracted from the days total weight. This is a two day event with the top three (3) teams with the largest 2 day total weight winning prize money.

### — SPECIAL NOTICE —

The Cameron Saltwater Fishing Festival will be having a Captain's Night at the Grand Chenier Park Pavilion on Thursday, July 31, 2008 at 6:30 p.m. All questions about the rules and the festival will be discussed at this meeting. Redfish Challenge entries and discounted Fishing Festival fishing tickets may be purchased at this event.

Anglers who enter our fishing events prior to and on Captain's Night will be treated to a fish dinner, refreshments and will be eligible for the many door prizes given away at this function.

CAMERON SALTWATER FISHING FESTIVAL TICKETS and CAMERON SALTWATER REDFISH CHALLENGE ENTRY FORMS, ALONG WITH OFFICIALS RULES may be acquired at these fine merchants:

CAMERON: Carroll's Quick Mart & The Pit Stop

CREOLE: Creole One Stop & The Kountry Store

GRAND CHENIER: Kelley's Mart

JOHNSON BAYOU: Bayou Convenience

LAKE CHARLES: Gulf Coast Tackle, Lake Charles Tackle & Dive Shop

SWEETLAKE: Chesson's Grocery

## Amazing Grace

How Sweet the Sound —  
That Saved a Wretch Like Me!  
I Once Was Lost,  
But Now Am Found  
Was Blind, But Now I See

It was written in 1779 by John Newton.

And, since that time it has become a tradition that has marked the peaks and valleys of many a life.

At **Hixson-Snyder Funeral Home**, we walk through those valleys with families.

It is our pledge to serve with respect. To serve with value. And to serve with grace.

For the finest in service, look to a lasting tradition.

— Serving All Of Cameron Parish —

## Hixson Funeral Homes

Hixson Lake Charles 3001 Ryan St. Lake Charles, LA 70601 337-439-2446	Hixson Sulphur 2051 E. Napoleon St. Sulphur, LA 70663 337-625-9171
--	---

## ATTENTION POLITICAL CANDIDATES

We Offer Products To Enhance Your Campaign Image

- Political Cards
- Flexo Badges
- Doorknob Hangers
- Postcard Decals
- Bumper Stickers
- Koozies
- Lapel Labels
- Pens
- Rally Fans
- and More

Call Jeffra Wise DeViney, Sales Consultant

**Wise Ideas**

Printing & Promotions  
**337.912.5063**

# School schedules are told for Cameron Parish

Cameron Parish schedule for Hackberry, Johnson Bayou and South Cameron schools are as follows:

Aug. 11 - Teachers inservice; Aug. 12 - Students report; Aug. 29 - District inservice.  
 Sept. 1 - Labor day.  
 Oct. 20-23 GEE Retest Week.  
 Nov. 4 - Presidential election; Nov. 21 - District inservice; Nov. 24-27 - Thanksgiving holidays.  
 Dec. 22-Jan. 1 - Christmas holidays.  
 Jan. 9 - District inservice; Jan. 19 - Martin Luther King Day.  
 Feb. 9-12 - GEE Seniors only retest; Feb. 23-24 - Mardi Gras.  
 April 1-2, 6-8 - LEAP/GEE tests; April 13-16 - Spring break.  
 May 28 - Students' last day.  
 The schedule for Grand Lake High School is as follows:  
 Aug. 11 - Teachers inservice; Aug. 12 - Students report; Aug. 29 - District inservice.  
 Sept. 1 - Labor Day.  
 Oct. 20-24 - GEE retest week.  
 Nov. 4 - Presidential elec-

tion; Nov. 21 - District inservice; Nov. 24-28 - Thanksgiving holidays.  
 Dec. 22-Jan. 2 - Christmas holidays.  
 Jan. 9 - District inservice; Jan. 19 - MLK Day.  
 Feb. 9-12 - GEE Seniors only retest; Feb. 23-24 - Mardi Gras.  
 April 1-3; 6-7 - LEAP/GEE test; April 13-17 - Spring break.  
 May 28 - Students' last day.

## 112 parish residents eligible to file

According to officials with the Southwest Louisiana Asset Building Coalition, 7,312 residents in the five-parish region have not filed for their economic stimulus payment from the federal government, included are 112 Cameron Parish residents.

The residents of Allen, Beauregard, Calcasieu, Cameron and Jeff Davis parishes have until Oct. 15, to file a completed Form 1040A with the Internal Revenue Service to be eligible for an economic stimulus payment.

Eligible residents include anyone who in 2007 received at least \$3,000 in earnings and/or benefits from the Social Security Administration, Veterans Administration, disability payments or a Retired Railroad Worker pension.

SSI does not count as a qualifying income. Many of these individuals may be living in nursing homes, assisted living centers, with extended family or receiving home health services.

If anyone knows someone who may need assistance locally, they may call the SWLA Asset Building Coalition at 433-1088 for more information.

## Now you know: Yield to the right at four-way stop

At a four-way stop intersection, the driver of the vehicle that arrived first should be the first to proceed. If several vehicles arrive at the same time, the driver of the vehicle on the right has the right of way and should be the first to proceed. Remember that you must come to a full stop at a stop sign.

The Louisiana Highway Safety Commission reminds motorists that the right of way rules apply to everyone on the road, including bicyclists, and no person should ever insist on taking the right of way.

# It Seems Just Like Yesterday

By KEITH HAMBRICK



## Cameron Pilot July 24, 1975 LOCAL BAND HAS ANOTHER RECORD

Baro and the Teardrops, a French country music band from Cameron, has just released their fifth record, "Tai Petite Mais Tai Meon (You're Little and You're Pretty)" with "The Teardrop Special" in the flip side.

The band, which consists of J. H. (Baro) Boudreaux, Jerry Furr, Gilbert "Poo" Landry Jr., Barry Wayne Richard, Lloyd Kelley and Phillip Trosclair, have plans to cut an album of French music in December.

Boudreaux said that the new record is the revival of a song written around 1930 ("Tai Petite Mais Tai Meon") by the late James and Dudley Fawvor of Grand Chenier, sons of the late James "Mr. Jim" Bonsall.

## DOXEY REUNION HELD

The annual Doxey reunion was held at the Doxey-Vincent VFW Post in Cameron on July 12. The descendants of William and Isa C. Doxey gathered to enjoy the day, a covered dish luncheon plus broiled crabs, shrimp and fried fish. Chefs preparing the seafood were Waldon Doxey, Joe Morales and Bill Guidry.

The oldest member of the Doxey clan was Robert C. (Bobby) Doxey of Grand Chenier. The youngest member attending was 1-year-old Howard Hayes Dupuie III (Tre'), son of Mr. and Mrs. Howard H. Dupuie of Cameron.

Sponsors for the occasion were Mr. and Mrs. Waldon L. Doxey and Francis Reid. Secretary and treasurer

were Mrs. Waldon (Edna) Doxey and Mrs. Lee (Verda) Folse.

## 4-HERS AWARDED

The Grand Lake 4-H winners who were awarded a trip to Astro World in Houston along with their leader, Mrs. Albert Guidry were: Shari Beard, Preston Smith, Pamela Duhon, Christine Chesson, Jack Dugas and Betty Dugas. Other leaders to accompany the group were Mrs. Mervin Chesson and Mrs. Pat Smith.

## SWEETLAKE YOUTH GROUP

Last Sunday afternoon, July 20, a meeting was held at the Sweetlake United Methodist Church to organize a youth group, with Carolyn Gibbs in charge.

Youth present were: Kayla Precht, Kim Woolard, Barbara LaBove, Sharon LaBove, Irma Broussard, Kris LaVergne and Kathy Stone. Those present to assist in the program were: Mrs. Jeanne LaVergne, Mrs. Jerry Woolard, Pianist and the Rev. Elmer Malone, pastor.

Officers elected were Kayla Precht, president; Kathy Stone, vice-president; Kim Woolard, secretary and Sharon LaBove, treasurer.



**RICKY PITTMAN**, Author, Musician, and Story Teller, shows his collection of Civil War artifacts to the young patrons of the Johnson Bayou Library. Mr. Pittman performed period songs and told stories pertaining to the Civil War era. (Photo by Chad Merritt)



Explore The World!  
 Expand Your Horizon!  
 Spend Your Summer  
 Reading Books!

## SPECIAL!

**KOOZIES Customized with your name or for special events such as... Weddings, Family or School Reunions, Safety Awards, Etc.**



Call For Other Great Deals



**Wise Ideas PRINTING & PROMOTIONS**



Call **JEFFRA DEVINEY 912-5063**

Check Us Out At... [www.bestwiseideas.com](http://www.bestwiseideas.com)

## Dear Local Merchant, Number 8 Reason why you should increase your advertising. . .

**8. Here's a hard fact to chew on. Over any given period, a company that advertises below the industry average has sales that are below the industry average.**

Call Jeffra DeViney, Advertising Sales Representative today to discuss your advertising . . .

**786-8004 or 1-800-256-7323.**



## The Cameron Pilot

203 Harrison St. • P. O. Box 995 • DeQuincy, La. 70633

**PETS MADE EASY.**

**GOVERNMENT MADE EASY.**

USA.gov. Your official source for government info.

# FREE Installation FREE Wiring\*

...when you add High-Speed Internet, to your Phone service!

Get connected for as low as **\$14.95\*** /month for three months!

Call us today— this offer won't last long!

that's a savings of over **\$110.00**

Ask about our other money-saving packages.



**Cameron Communications**

Get connected.

\*Promotional offer ends 07-31-08. You must have Phone service with Cameron Communications to receive promotional pricing. \$14.95 High-Speed Internet price will be prorated for the first and last month of the promotion. After promotional period, High-Speed Internet price will return to \$29.95. FREE wiring includes three wirings. Price shown does not include taxes or surcharges. Some restrictions apply. Service varies by area.

1 800 737-3900 [www.camtel.com](http://www.camtel.com)

# NOW HEAL THIS

*The first wound treatment center of its kind near you.*

A wound that hasn't healed in 30 days threatens your health and lifestyle. At West Calcasieu Cameron Hospital Wound Healing Center, our proven treatment heals chronic wounds. You'll get the latest in equipment and technology, supervised by a panel of local, skilled physicians. Our specialized care is covered by most insurance plans and Medicare. Talk to your doctor or call West Calcasieu Cameron Hospital Wound Healing Center. There's new hope for healing your wound.

Call for an evaluation today!  
**337.528.4708**



Dr. Maureen Lannan  
 Medical Director

**WCC**  
 West Calcasieu Cameron Hospital  
**WOUND HEALING CENTER**

701 Cypress St., Sulphur, LA

# Salvinia Management

By Kevin Savoie

Two species of the invasive, aquatic salvinia cause problems in Louisiana. Common salvinia, *Salvinia minima*, which is native to Central and South America, was first identified in Florida in the 1930s.

From there it has spread to every southern state in the United States. Giant salvinia, *Salvinia molesta*, also native to South America, has spread to almost every temperate and tropical country worldwide. It has become known as the most noxious of all aquatic weeds.

While giant salvinia at maturity is quite a bit larger than its cousin the common salvinia, the two can be distinguished from one another through close observation of the upper leaves.

Both species have many small spike-like hairs on the upper leaf surface. The giant salvinia's hairs split into four prongs that rejoin at the tips to form a structure that resembles an eggbeater or cage. The four prongs on common salvinia do not rejoin at the tip. The giant's young plant leaves lie flat on the water similar to the common salvinia in size and appearance, however as the giant salvinia grows and matures the leaves begin to fold upward and inward.

Giant salvinia is much more damaging than its smaller cousin because of its ability to grow into dense mats that can cover entire water bodies with a thick layer of vegetation. These mats smother native plants by blocking the penetration of

sunlight into the water.

Other consequences of giant salvinia are reduced dissolved oxygen in waters shaded out, causing fish kills and reduced production of submerged aquatic plants. This severely reduces the value of an area as waterfowl habitat. Solid mats of giant salvinia may also reduce or eliminate boating and fishing opportunities simply because boats are not able to push through the thick mats.

Controlling salvinia is difficult and can be quite costly. Common salvinia does not tolerate salinities and dies in a few days at levels at or above 3-4 parts per thousand.

Giant salvinia is more tolerant requiring salinities of 7-10 parts per thousand for a week to begin killing it. In areas where salt water is not an option, such as in fish ponds and freshwater marshes, herbicides are an option.

Diquat dibromide, commonly sold under the brand name of REWARD, is a contact herbicide which is effective at controlling salvinia. Another option is to use an aquatic labeled formulation of glyphosate, commonly known as the roundup family of herbicides. It is widely sold under many brand names. When applying these two herbicides it is important to add a surfactant which breaks the surface tension of the herbicide mixture allowing it to coat the plant and stick to it long enough to work.

When controlling salvinia in waterfowl hunting areas, time of application should be considered. It is most desir-

able to control unwanted vegetation without killing desirable waterfowl foods if possible. The ideal time is early in spring before the peak of growing season when infestations are light, water levels allow easy access and it is less costly to spray small areas of growth. This should be followed by spot spraying throughout the summer to maintain control.

In ponds with no flow, another herbicide option is to use Sonar or Avast, which requires a long residence time to be effective. It is quite costly, but one application gets control for up to a year.

Savoie is a natural resources and fisheries agent based in Lake Charles for the Louisiana Sea Grant Program and the Louisiana State University AgCenter. He can be reached at [ksavoie@agcenter.lsu.edu](mailto:ksavoie@agcenter.lsu.edu). His column can also be found at <http://www.seagrant-fish.lsu.edu/resources/index.html>.

## Lawn mowers need yearly maintenance

(NAPSA)-If your lawn mower is what's choking instead of your weeds, you have lots of company. More than 63 million lawn mowers are revving up for lawn season, and many will need a little TLC. Experts advise that an hour or two of maintenance a year can make a big difference in how well your equipment operates and how long it will ultimately last.

For a trouble-free season of lawn care, here are some tips from the experts at small-engine maker Briggs & Stratton Corporation on how to maintain your lawn care equipment so it will start easily and run trouble-free:

- Use a fuel preservative. Gasoline goes stale in about 30 days, making your mower or other outdoor power equipment difficult to start. The FreshStart gas cap is a convenient way to keep fuel fresh for six months. The cap, which replaces the equipment's original gas cap, contains a replaceable cartridge of concentrated fuel preservative that drips into the fuel tank.

- Check and change your oil. Check your mower's oil level regularly and change the oil after 25 hours of operation under average mowing conditions. Use a 100 percent synthetic oil, which is made for use in all engines, or use an SAE 30 detergent oil for your mower-look for the bottle that says "Lawn Mower Oil" and you can't go wrong.

- Add oil to new equipment. When you purchase a new mower or another piece of power equipment, be sure to check the oil before you run it for the first time-new equipment is often shipped without oil. Running power equipment without oil will damage the engine.

- Tune up your lawn mower once a year. It takes about 30 minutes, and you can purchase convenient Tune-Up Kits that contain everything you need: oil, spark plug, filter(s) and fuel preservative. To learn how to easily tune up your lawn mower, visit [www.yardsmarts.com](http://www.yardsmarts.com).



WILDLIFE AND Fisheries agents were forced to tie up at the Cameron Jetty boat dock to 8-10 foot seas offshore on Tuesday. (Photo by Cyndi Sellers.)

## Cameron Outdoors

By LOSTON MCEVERS



### TENTATIVE DATES FOR MIGRATORY BIRDS

The Louisiana Wildlife Fisheries Commission has set the tentative dates for the early migration birds.

The number of days we get for teal season depends on the breeding population estimated for blue winged teals.

The 2008 estimate was over 6 million. This would be a proposed teal season of 16 days with a daily bag limit of 4 teals and possession limit of 8 teals. Dates set would be Sept. 13-28.

Rails and Gallinules season dates are proposed for Sept. 13-28, this being good to bag a few purple Gallinules that are in our marshes. The brown rail is making a comeback, but slow.

The season would last 70 days, with the other days to be set for our regular duck season.

Our common purple gallinules would have a daily bag of limit of 15, possession of 30, king and clapper rails 15 daily, 30 possession, Sora and Virginia Rails daily bag of 25 as well as a possession limit of 25.

### S.T.A.R.

The CCA's S.T.A.R. contest is still strong. In our western division we see the local change, as John Adams had a 8.85, Tony Hayden 8.25 and Ted Bercier dropped from first to third with 7.80 pounds. Betty Ellender, a new leader in the women's division, took over first place with a 8.15 weight, all of these in our Western Trout Division.

Roger Logan has come back in the Largemouth bass division, with a 9.20 to take the lead, beating out Kenny LaRacca's 9.15 largemouth.

### RED SNAPPER

Red Snapper season for our recreational anglers, is slowly coming to an end. Remember, we already had a short season. Well, the National Marine Fisheries Service intends to close the recreational fishing for Red Snapper in the federal waters of the Gulf of Mexico, at 12:01 a.m., local time, Aug. 5. It will remain closed for this year, not opening again until June 1, 2009, for the 2009 recreational fishing season.

The reason given was to prevent overfishing, and that the recreational fishery's quota for 2008 season, seems to be overfished. The fishery service has to close a fishery in federal waters, when the quota is met, or they think it's being met.

### GIBBSTOWN

John and Justin LeDoux took first place in the Gibbstown contest, with a weight of 3.42, while Darren and Barry Richard held second place with 3.38 pounds. Also they had the largest bass weighing 1.70 pounds. Ricky Canik and Travis Merritt had third with a 2.71 pounder.

### HAYES

The Hayes contest saw Todd Jeffers and Chris Breaux with 7.63 pounds, Trey Wilkerson and Dane Desonier 7.20 pounds and Doug and Roger Logan had 5.93 pounds. They only had one bass and took big bass money with the 5.93 pounder.

### SALTWATER CONTEST

The 5th annual Cameron Saltwater Fishery Festival will hold their Captain's Night on Thursday, July 31 at the Grand Chenier Park for the Aug. 8 rodeo. Saltwater anglers can enter

at that time, should they want to.

### NEWS BRIEF

I noticed a good number of summer mallards, with lots of their young ducks in our Big Burn Marshes. This looks good, how every biologist will try a count here in Southwest Louisiana, as they seem to think the black mallards population has declined. Let's hope not.



## J. B. Library schedule is announced

Johnson Bayou Library announces the following schedule of events

\*Thursday, July 24 - Children's Board Game Day, 10-11 a.m.

\*Friday, July 25 - Children's Story Hour, 10-11 a.m.; Children's Karaoke, 1:30-3:30 p.m.

\*Monday, July 28 - Adult Book Club, 2 p.m.

\*Tuesday, July 29 - Christmas in July - Crafts for all ages, 10-11 a.m.

\*Wednesday, July 30 - Children's Craft Day, 10-11 a.m.; Create a Book - Part 3 (Grades 5th- 8th), 11 a.m.-12 p.m.

\*Thursday, July 31 - Harvey Rabbit & Friends, 2-3 p.m. Johnson Bayou Baptist Church Fellowship Hall

\*Friday, Aug. 1 - Children's Costume Party \*\*Come dressed as your favorite movie, TV, or book character, 11 a.m.-12 p.m.

For more information contact Johnson Bayou Library at 337-569-2892 or visit us on The web at [www.cameron.lib.la.us](http://www.cameron.lib.la.us).

**5th Annual Cameron Saltwater Fishing Festival**  
Grand Chenier Park

**FRIDAY, AUGUST 8, 2008**

12:01 AM - FISHING RODEO BEGINS

6:00 AM - REDFISH CHALLENGE BEGINS

12:00 NOON - WEIGH STATION OPENS

3:00 PM - FESTIVAL GATES OPEN  
FOOD & CRAFT BOOTHS OPEN  
1ST DAY REDFISH CHALLENGE CLOSES

6:00 PM - WEIGH STATION CLOSES

7:30 PM - STEEL SHOT BAND PERFORMS

12:00 AM - GROUNDS CLOSE

**SATURDAY, AUGUST 9, 2008**

6:00 AM - FINAL DAY OF THE REDFISH CHALLENGE BEGINS

9:00 AM - FESTIVAL GATES OPEN

10:00 AM - FESTIVAL QUEEN PAGEANT BEGINS

10:00 AM - FOOD BOOTHS OPEN

11:00 AM - WEIGH STATION OPENS

12:00 NOON - TEARDROPS BAND PERFORMS

3:00 PM - REDFISH CHALLENGE ENDS

3:30 PM - STATIC PERFORMS

5:00 PM - WEIGH STATION CLOSES

6:30 PM - RECOGNIZE CORPORATE SPONSORS  
FESTIVAL QUEENS PRESENTED  
PRESENTATION OF FISHING AWARDS

7:30 PM - JAMIE BERGERON & KICKIN CAJUNS

9:00 PM - FIREWORKS ON THE RIVER  
SPONSORED BY PENELOPE RICHARD,  
ATTORNEY AT LAW

9:30 PM - JAMIE BERGERON & KICKIN CAJUNS

12:00 AM - FESTIVAL CLOSES

## Southwest Homes

**436-5593 or 1-800-256-8006**

**Why Buy Locally?**

- Largest Housing retailer in SWLA
- Exclusive Trane A/C in all homes
- In House Service Department
- Over 200 models to choose from
- We handle SBA Loans
- We assist with Road Home Programs
- All homes exceed Cameron Parish Building Codes
- We have been in business over 20 years

**500 S. M. L. King Hwy . • Lake Charles, LA**

DEER VALLEY HOMEBUILDERS, INC.

## Propane Tank Safety Tips

Take these steps to protect your family and property before and after a flood, hurricane or severe storm.

Getting ready for a flood or hurricane: Properly secure the propane tank, if possible. Turn off the gas supply valve at the tank ("righty, tighty"). Fasten the protective dome on the tank.

Turn off appliance pilot lights, control valves and manual shut-off valves. After the flood or hurricane has passed, look for visible structural damage, including damaged external venting and vent caps.

Call your propane dealer or a qualified technician if:

- You smell propane gas. Your propane tank has shifted or moved.
- The tank regulator has been exposed to water.
- The gas lines are broken, bent, damaged or have pulled away from the propane tank or appliances.
- Propane appliances or their controls have been exposed to water.

**Lake Arthur Butane Co.**  
LakeArthurButane@bellsouth.net  
Dominique J. Monlezun  
Interest, Inc.

2329 E McNeese St. Lake Charles, La. 70607

Serving your needs since 1945

337-436-5005 • Fax: 337-439-3724

**1-800-256-1287**

## Happy Ads

**ARE HERE AGAIN!!**

Price Includes Photo and Art-Work.

Mail your request along with photo and payment by 4 p.m. Monday to P. O. Box 995, DeQuincy, La. 70633. Ads must be signed.

Place A Happy Ad For As Little As

**\$24<sup>50</sup>**

- Birthday
- Anniversary
- Promotion
- League Championship
- Graduation
- New Baby
- Bon Voyage
- Good Luck
- Engagement
- Wedding
- New Home

Congratulations! You've found a terrific way to send your best wishes to someone special for any occasion!

## The Cameron Pilot

Call or come by now and make someone's day!  
**786-8004 or Toll Free: 1-800-256-7323**

# THE SAVVY SENIOR



By  
**JIM  
MILLER**

Dear Savvy Senior,  
Can you tell me about reverse mortgages? My wife and I are both in our 70's and are interested in learning more about this option.  
Homebody Bob

Dear Bob,  
Over the years reverse mortgages have been considered loans of last resorts, only for financially desperate seniors. Not anymore! The reverse mortgage industry is booming helping retirees from all walks of life use their homes to help fund their retirement.

### The Basics

A reverse mortgage is a unique loan that lets older homeowners convert part of the equity in their home into tax-free income that doesn't have to be paid back as long as they live there. But who's eligible? How much can be borrowed? What does it cost? And is this right for you? Here are the key points on how a reverse mortgage works and where you can find help:

**Eligibility:** To be eligible you must be at least 62 years old, own your own home and currently be living there. There is no income qualification. Even if you have an existing mortgage, you're still eligible, but you must be able to get enough from the reverse mortgage to pay it off.

**Ownership:** With a reverse mortgage, you, not the bank, own the house, so you are still responsible for property taxes, insurance and repairs. And, how you choose to spend the money from the loan is up to you.

**Types of loans:** There are two basic types of reverse mortgages, the FHA insured, Home Equity Conversion Mortgage (HECM) which accounts for about 90 percent of all reverse mortgages on the market. (HECM's limit how much of the home's value you can tap - currently ranging from \$200,160 to \$362,790.) And conventional reverse mortgages, also known as jumbo loans, which are better suited for seniors with higher valued homes - over \$400,000 - because they offer larger loan amounts.

**Loan costs:** The main drawback of reverse mortgages is the hefty up-front fees - a 2 percent lender origination fee, 2 percent mortgage insurance, along with appraisal fee, closing costs and other miscellaneous expenses. All told, the cost of getting a HECM can run around 5 percent of the value of your home. Conventional reverse mortgages are generally more expensive. (Note: Most up-front fees can be added to the loan balance, so you'll have no out-of-pocket cost at closing.)

**Loan amounts:** The amount you get through a reverse mortgage depends on your age, your home's value, where you live and the current interest rates. Generally, the older you are, the more your house is worth, and the lower the interest rates are, the more you can borrow. To calculate how much you may be able to borrow with a HECM visit [www.rmaarp.com](http://www.rmaarp.com). You can calculate conventional reverse mortgages on the Web sites of the financial institution you're considering.

**Payment options:** You can receive the money from a reverse mortgage in a lump sum payment, a line of credit, regular monthly checks or a combination of these.

**Loan repayment:** A reverse mortgage does not have to be repaid until you, or the last surviving borrower, permanently moves out of the home or dies. Then you or your heirs will have to pay off the loan (which includes the money you actually borrowed plus accrued interest and fees) either with the proceeds from selling the place, or if they want to keep it, with money from another source. But, you or your heirs will never owe more than the value of the house.

**Counseling:** Before applying for a reverse mortgage, you are required to first meet with an independent counselor who will spell out the pros and cons, as well as the alternatives (it's free). To find one in your area call the AARP Reverse Mortgage Education Program (800-209-8085), the National Foundation for Credit Counseling (866-698-6322), or Money Management International (877-908-2227).

**Tax-free:** The money you get from a reverse mortgage is tax-free and won't affect your Social Security or Medicare benefits, but it may affect eligibility for certain kinds of government assistance, such as SSI and Medicaid. Be sure you check.

**Reverse lenders:** Reverse mortgages are offered by both banks and mortgage lenders. To help you choose one, talk to your reverse mortgage counselor or visit [www.reversemortgage.org](http://www.reversemortgage.org).

**Savvy Tip:** To learn more about reverse mortgages visit [www.aarp.org/revmort](http://www.aarp.org/revmort), or call 800-209-8085 and order their free booklet "Home Made Money."

Send your senior questions to: Savvy Senior, P.O. Box 5443, Norman, OK 73070, or visit [www.savvysenior.org](http://www.savvysenior.org). Jim Miller is a contributor to the NBC Today show and author of "The Savvy Senior" book.

## Removing faded flowers is good for plant growth

By DAN GILL  
LSU AgCenter  
Horticulturist

Deadheading is an important but often neglected gardening technique. It refers to pruning off old, faded flowers from a plant as it blooms. It is most often done to annuals and perennials, but it is also useful with some summer-flowering trees and shrubs.

A number of advantages to deadheading make it worth the time and effort it involves. For one thing, it improves the appearance of a plant tremendously.

Plants that bloom over a long period of time often end up with an accumulation of unattractive dead flowers and seed pods mixed in with the newly opened blooms. This makes the plant look bad even with pretty flowers on it. If you keep the faded flowers pruned off the plant, it always looks fresh - as if it were just coming into bloom.

Removing the old flowers from many types of plants also will encourage them to bloom more and for a longer period. Annual plants, in particular, bloom for a time, set seed and then stop blooming and die. Regularly removing faded flowers prevents the plants from setting seed. As a result, annuals will respond by producing more flowers over a longer season in a continuing effort to set seed. Many perennials also will send up another flush of flowers if they are promptly deadheaded.

You can enjoy other advantages by preventing bedding plants, perennials and bulbs from setting seeds. Unless you intend to grow new plants from the seed, producing seed is a wasted effort. Plants commit considerable resources to creating seeds. This effort could be redirected to growing more leaves, stems and roots, leading to a more vigorous plant and, perhaps, more flowers the next season. For annuals and perennials that self-seed, deadheading prevents unwanted seedlings from popping up all over the garden.

Depending on how the flowers are produced, deadheading may involve removing flowers on a single stem (such as on gerbera daisies), removing faded clusters of flowers (such as on yarrow, agapanthus or amaryllis) or removing faded flower spikes (such as on snapdragons or veronica).

If they are large enough, individual faded flowers can be removed from a stalk or cluster containing numerous flowers, such as on rudbeckia, daylily and stokesia. As these individual flowers open and fade, you can remove them but leave the remaining to bloom. Once all of the flowers have opened and finished, you can then remove the entire stalk.

When deadheading, always remove the flower stem that attaches the flower to the plant when you remove the flower. The idea is to remove any evidence

that there was a flower at that location. Besides, the headless flower stems are unattractive.

If you miss removing the faded flower and a seed pod already has started to develop, go ahead and remove the pod. You may still help encourage the plant to bloom longer or at least prevent the plant from wasting energy on further seed development.

If you do want to collect seeds from a plant or if you want it to self-seed in your garden, you must allow at least some of the flowers to set seed. The best way to handle this situation is to deadhead early in the flowering season, and then let some of the last flowers set seed.

While you are deadheading, take the opportunity to groom your plants by removing damaged, unattractive foliage and dead stems or branches. Not only is this healthier for the plants, but it also keeps them looking their best. In addition, it is a good time to inspect your plants for developing insect or disease problems and decide what kind of control, if any, is needed. Notice if any plants need to be staked or supported after months of growth in the garden, and attend to that as well.

A few summer-blooming trees and shrubs can benefit from deadheading, too. Crape myrtles, vitex and oleander are more likely to produce a second flush of flowers after the first is finished if you are able to trim back the old flowers or developing seed pods. Make your cut just behind a faded cluster or flower spike.

In a few cases, you may want to remove perfectly good flowers from plants. In the case of coleus and caladium, where the colorful foliage is the star, the flowers or flower buds are removed to encourage production of more attractive foliage. Flower spikes of herbs, such as basil, parsley and cilantro, also are often removed to encourage continued production of flavorful leaves.

Once again, the plants that respond best to deadheading by extended flowering are annuals and perennials that bloom over a relatively long season along with some summer-flowering trees and shrubs such as crape myrtle, vitex, rose and oleander.

Deadheading will not extend the flowering time of shrubs such as azaleas or hydrangeas that bloom from a set number of buds or perennials that bloom over a relatively brief season. But it can make them look more attractive and prevent them from wasting effort and energy on seed production.



## Eight nutrients you need as you age

(NAPSA)-Many seniors are taking charge of their health by choosing the right Medicare plan to meet their personal health needs. But that's not the only way to take charge of your health. Many seniors are doing so by eating foods their body needs as they age.

The following is some food for thought:

**Vitamin A**  
According to the American Dietetic Association, as you get older, your body doesn't need as many calories. That's because it uses energy at a slower rate. Calorie needs may vary from person to person.

**Vitamin C**  
What is true for everyone is that he or she needs to make those calories count because all of us need nutrients. According to the experts at Health Net, the following eight essential nutrients can help you stay healthy.

**Protein**  
Older adults need at least five ounces, or two servings of protein a day. You can get that protein from meat or dairy-milk, cheese and also yogurt supply protein. Try other protein sources, such as eggs, beans and peanut butter.

**Calcium**  
Vitamin D helps deposit calcium in bones and keeps bones strong. The body makes vitamin D after sunlight hits the skin. Twenty to 30 minutes of sun exposure two to three times per week is plenty. Most milk and cereals are fortified with vitamin D.

**Iron**  
It's never too late to consume more calcium. If you are over age 50, you should get at least 1,200 milligrams of calcium each day. Milk, cheese and yogurt are the best sources of calcium. Dark green, leafy vegetables, calcium-fortified fruit juices and cereal also have a lot of calcium.

**Vitamin A**  
Dark green, leafy and yellow and orange vegetables (such as cantaloupe, carrots, yellow squash) all help eyes adjust to dim light and protect skin tissues.

**Vitamin C**  
One common problem with aging is iron deficiency. It can lead to anemia. Eating vitamin C in iron-rich foods helps your body absorb iron. Choose iron-enriched cereals, beans, whole grains, lean meat and poultry. Eat vitamin C-rich fruit (such as oranges, guava or papaya) or fruit juice at meals.

**Folate**  
It helps red blood cells develop to carry oxygen through the blood. Good sources are kidney beans, spinach, strawberries, green peas, broccoli and romaine lettuce. It's also in fortified breads.

**Vitamin B12**  
Too little vitamin B12 can also lead to anemia. Eat meat, poultry, fish, eggs and dairy foods for this vitamin.

**Water**  
Older adults need at least eight (8-ounce) cups of fluids per day-especially water. Remember that juice, milk and soup offer other nutrients as well.

Don't overdo it, say the experts at Health Net. Getting too much of some vitamins can hurt you. Certain vitamins can build up and become toxic. Also, some vitamins interact with medications or affect how medications work. Before you take any supplement-even vitamins-consult with your doctor.

Since you may not need as many calories as you age, it's a good idea to make those calories count by eating nutritious foods.



TE

### Thib's Electrical

Electrical Contractor  
State License #45542  
Bonded & Insured

• Residential & Commercial

• Remodels & Service Work

— FREE ESTIMATES —

Danny Thibodeaux, Owner

**(337) 661-1071**      Email: [thibselectric@gmail.com](mailto:thibselectric@gmail.com)

## The Cameron Pilot

# Customer Services

Complete the appropriate section(s) below and mail entire coupon to:  
The CAMERON PILOT, P.O. Box 995, DeQuincy, La. 70633-0995  
Allow Two Weeks For Processing.

### Change of Address?

If You're Planning A Move, Please Attach Your Newspaper Label Here, Then Print Your Name and Address In The Box Below. Send Early To Ensure Continuous Service.

### Easy Renewal

To Renew Your Current Subscription, Please Check The Appropriate Box Below, Then Print Your Name and Address In The Box Below.

Cameron & Calcasieu Parish.....\$23.00

Elsewhere In Louisiana & Texas.....\$25.40

Elsewhere In The United States.....\$33.60

### Want Advertising Info?

Please Check The Box Below and Print Your Name and Address In The Section Below.

Yes. Please Send Me Advertising Rate Information.

### Name and Address

Be Sure To Complete This Section In Addition To Any of The Sections You've Filled In Above.

From:

Name \_\_\_\_\_

Address \_\_\_\_\_

City \_\_\_\_\_ State \_\_\_\_\_ Zip \_\_\_\_\_

Don't Forget To Include Your Payment For Your Subscription.

### Gift Idea

The Cameron Pilot Makes a Welcome Gift. And It's So Easy To Give. Simply Fill Out The Recipient's Name and Address Below, Then Print Your Name and Address In The Box Above. Rates same as in Easy Renewal.

Name \_\_\_\_\_

Address \_\_\_\_\_

City \_\_\_\_\_ State \_\_\_\_\_ Zip \_\_\_\_\_

(For More Than One Gift, Please Attach A Separate Sheet.)

### — JOB OPENING —

The Cameron Parish Head Start is now accepting applications for a Bus Aide in the Hackberry Head Start Center located at 110 Volunteer Lane, Hackberry. Any person who may be interested in applying can do so from 9 a.m. - 3:30 p.m., Monday - Friday.

Applications must be turned in by 11 a.m., August 1, 2008. For additional information call the main office at 337-762-3979.

RUN: July 17, 24, 31 (JU-29)

How to recognize if some is having a stroke

## Act F.A.S.T.

**FACE** Ask the person to smile. Does one side of the face droop?

**ARMS** Ask the person to raise both arms. Does one arm drift downward?

**SPEECH** Ask the person to repeat a simple sentence. Are the words slurred? Can he/she repeat the sentence correctly?

**TIME** If the person shows any of these symptoms, time is important. Call 911 or get to the hospital fast. Brain cells are dying.

### — REGISTRATION —

#### DEADLINE FOR Sept. 6, 2008 ELECTION

In order to vote in the September 6, 2008 election you must be registered by August 6, 2008. This election is 1st Party Primary Election: Office Titles, U. S. Senator and U. S. Representative.

You can **Register** by mail (by requesting a form) or you can come to our office located in Cameron behind the courthouse, 1st trailer to the right. Our phone number is (337) 775-5493.

Thank You,  
Suzanne Sturlese, Registrar

RUN: July 24 & 31 (JU-37)

### 5th Annual Cameron Saltwater Fishing Festival Pageant

Saturday, August 9, 2008  
GRAND CHENIER PARK PAVILION  
GRAND CHENIER, LA.  
DRESS CODE: Casual Dress

(Capris, Shorts, Skirts, Sun Dress, Etc.) - Straight Modeling  
Hair and makeup should be age and outfit appropriate.

NO EXCESSIVE BEADING, SEQUINS OR RHINESTONES!!

NOTE: PLEASE COME DRESSED. There will be no facilities available to get dressed.

---

— AGE GROUPS —

**GIRLS:**

0-11 Months.....Baby Miss

12-23 Months.....Toddler Miss

2-3 Years.....Tiny Miss

4-6 Years.....Petite Miss

7-9 Years.....Little Miss

10-12 Years.....Deb Miss

13-15 Years.....Teen Miss

**BOYS:**

0-11 Months.....Baby Beau

1-2 Years.....Toddler Beau

3-5 Years.....Master Beau

Queens & Kings Receive Crowns and Custom Monogram Banner

Alternates: 1st, 2nd, and 3rd Runners-up

---

— Entry Fee is \$30.00 —

\$10 DISCOUNT FOR ADDITIONAL SIBLING

REGISTRATION: 9:30 • COMPETITION 10:00

PROCEEDS TO BENEFIT THE REBUILDING OF THE CAMERON PARISH YOUTH GROUPS, THE CAMERON LIONS CLUB SCHOLARSHIPS, CAMERON LIONS CLUB CRIPPLED CHILDREN CAMP & EYEGLASS FOUNDATION.

Contact Recia Willis (337) 775-5316 or (337) 370-4325

## Classifieds

### REAL ESTATE

CENTURY21 BESSETTE Realty, Inc., Office: 337-474-2185, Grace Robideaux, Realtor: 496-1611

•NEW! 1299 Hwy 384 Immaculate 2 yr old 3/2.5 beautiful custom home in Grand Lake on .75 acre. Split floor plan w/9 & 10' ceilings. Study plus gameroom w/over 2800 living. \$230,000.

•NEW! 104 Elaine Lane Salt water pool & outdoor kitchen complete this 4 yr old Grand Lake beauty. 3/2 plus study w/over 1800 living. Granite counter tops recently installed. 24 X 24 shop. \$239,900.

•HEBERT CAMP Road lots: Tract 3&4 \$25,500, Tract 1 \$22,500

•10962 HWY 384: 3/2 Modular home w/additions on 17.5 + acres. Owner will look at all offers \$275,000

•169 GRANGER LANE: 4 acres w/shop pad, electricity, and mechanical system. \$64,000.

•229 McCAIN: Acadian 4/2 in Grand Lake in restricted subdivision w/large upstairs game room \$219,000. 2/13tfc.

•20 ACRES of wooded timberland for sale north of DeQuincy, Beauregard Parish. Please contact Darlene Nortman with Coldwell Banker Elite at (337) 274-2466 or (337) 463-2004 for more information.

BEAUREGARD REAL Estate, 113 S. Washington, DeRidder, LA (337-460-9334) available to assist you in buying/selling real estate. Contact D. L. Brasseaux (Cell 337-802-5218) or Elizabeth Brasseaux (Cell 337-912-5493). beau-realestate@hughes.net. 7/17-24p.

FOR SALE: Mobile home to be moved. Custom built 2004, 16x80 signature sh/127 3 bedroom, 2 bath, secret room. Front and back porch, excellent condition asking \$34,000. Call anytime 337-598-5190 or 802-5528. 7/2 - 7/31p.

GRAND LAKE: 173 Brian Circle, 4 Bedroom/ 2 Bath, 2015 Living, Hard Wood Floors, Custom Cabinets, Built-ins, 24x30 Shop, Restricted Subdivision, \$188,000. No FLOOD ZONE Phone: 802-5735. 7/23mc

### FOR SALE

METAL OUTLET Metal Roofing ~ Carports ~ Metal Buildings ~ Patio Cover Kits ~ C's & Z's ~ Custom Trim ~ RV & Equipment Covers ~ Metal Doors ~ Windows. 337-625-2778. 2241 E. Napoleon, Sulphur. Open Mon.-Fri. 7 am-5 pm, Sat. 7 am-12 noon. tfc.

FOR SALE: 40 ft. Navy utility hull, fiberglass, 4 ft. fantail, aft cabin, 671 GM diesel engine, generator, air and heat, electronics, documented w/Coast Guard; can be seen at Nalmar in Westlake. \$44,500. Call 855-0389. 7/16-23c.

ATTRACT ATTENTION: Need promotional items for trade shows, festivals, fairs, school events, etc. Call us, we can help! Rely on Wise Ideas Printing & Promotions to help you develop a customized program for your next event. Check out our website: www.bestwiseideas.com. Call Jeffra Wise DeViney for competitive quotes & sales catalogs. Phone: 912-5063.

### NOTICE

ESTATE AUCTION: Southwest Auction Company, Marlo Schmidt, Auctioneer, Lic. #1594-07. July 26, 2008, 9 am - 3:463 House Ln., Sulphur, La. House and 5 acres, will sell at 11 am. All household contents including appliances, bedroom suites, glassware, X320 John Deere riding mower. Complete estate sale. www.swaco.us. Phone: 337-463-2200. 7/2 - 7/23p.

### APPLICATION FOR CLEMENCY

"I, Shane W. Dillard, document no. #415935, D.O.B. 08/15/1975, currently residing in Iberville Parish, Louisiana, have applied for clemency for my conviction of Carnal Knowledge of a Juvenile which occurred on the 9th day of April, 2004, in Cameron Parish, Louisiana. If you any comments or wish to communicate with the Board of Pardons please call (225) 342-5421."

/s/ Shane Dillard runs 7/23 - 8/7p



## Cameron Parish Sheriff's Report

The following arrests were made by the Cameron Parish Sheriff's Department, July 15-22:

Leese Ducote, 46, 975 W. Main St., Hackberry, No turn signal, left of center.

Ronald George, Jr., 20, 2339 D. Troclair Rd., Creole, Contributing to the delinquency of juveniles, Possession of CDS II.

Leona Boullion, 45, 150 Mildred St., Cameron, DWI, Probation violation.

Kenneth J. Champagne, 45, 105 McClure St., Lake Arthur, Poss. of drug paraphernalia, Poss. of marijuana, No headlights.

Oscar Visas, 34, Illegal alien, Speeding  
Olivia Varela Marillo, 41, Illegal alien.

Jerry Earl Jones Michael, 22, Aniston, Ala., Fighting.  
Jeffery Ryan Arrant, 22, Pace, Fla., Fighting.

Chester Lee Daigle, 54, 2653 Old DeRidder Hwy. 18, Lake Charles, Public intoxication.

William Lynn Hutchinson, 39, Hackberry Seafood Boat, Hackberry, Public intoxication.

Daniel Leon Materne, 23, 1101 Cal Cam Line Rd., Lake Charles, Property damage, Domestic abuse battery.

Eupher Paul Marceaux, 52, 1187 Friesen Rd., Lake Charles, DWI.

Kenneth J. Champagne, 32, 105 McClure St., Lake Arthur, No Driver's License in possession, Careless operation, DWI.

Spencer Joseph Troulliet, 21, 700 Main Street, Lot B, Hackberry, Domestic abuse battery.

Stori Sharmain Comeaux, 40, 249 E. Miller Rd., Grand Chenier, Domestic abuse battery.

Alicia Victoria Eakin, 24, P. O. Box 112, Creole, Careless operation, DWI.

Jesus B. Aguirre, 21, 987 Oak Grove Hwy., Creole, Public intoxication.

Shonie Michelle Brown, 25, 139 Eddie Mae Lane, Cameron, DWI, Driving under suspension, Yield signs/Stop signs.

## Delicious All-In-One Salad

4 ounces uncooked dried fusilli (corkscrew pasta)

1 cup Italian dressing  
1/4 cup chopped fresh basil leaves

1 15-ounce can garbanzo beans, rinsed & drained  
1 cup whole kernel corn, cooked & drained  
1/4 pound Swiss cheese, cut into 1/2-inch cubes  
1/2 cup sweet red peppers, cut into strips  
1/2 medium cucumber, sliced and quartered  
3 - 4 green onions, sliced

Cook fusilli according to package directions. Drain, rinse with cold water, and set aside.

Combine Italian dressing and basil leaves in large bowl; mix well. Add cooked fusilli and remaining ingredients to dressing mix; toss to coat well. Cover, refrigerate at least one hour to blend flavors.

## Cherish old friends before they are gone

By SUE CRISE

My husband and I lived in Alexandria from 1981 to 1984. We lived on Hall Street which ran off of Highway 28 west. Several blocks down from us lived one of our close friends.

Her name was Marion Bullard. When we met her, she was 59 years old and was living by herself. When she was younger, she and her husband had adopted two boys, whom they loved very much.

After we had known Marion for a while, she told us the stories of her sons because it was obvious to us that the boys were no longer in her life. They both met an untimely death, one in jail and one by drugs. I don't think Marion ever recovered from their deaths and shortly afterwards, she and her husband separated.

Marion was special to us because she "adopted" us as her children. At the time, we had only one child and he became her grandson. Marion was also a member of our church, so we visited frequently. Marion had a friend at church, Mabel Kadleck, who was a few years older than she was.

Somehow they decided to write a book about Louisiana. They would go off on the weekend, down the highway, looking for something interesting, someone to

talk with, and spend some time listening to their life stories. Marion would drive and Mabel would navigate.

Marion always carried a portable tape recorder. When they found someone who would share their stories, they taped the conversation. Later, Mabel would listen to the tape and transcribe the stories. Eventually, Marion and Mabel wrote their book, which is in narrative form, quoting exactly what they were told.

Marion passed away in 1997 and Mabel went to live in an assisted-living facility in Oklahoma, where her son and his family lived. We haven't received a Christmas card in several years, so we are not sure if she is still living.

We were happy to have them as friends; they always called us "the kids". They would help us and we would help them. One year, we put out the Christmas decorations for Marion because "it was too much work" for her to do herself. That was also the year of an ice storm, which caused the pipes to freeze and break in Marion's house after Christmas. All her decorations were destroyed by the broken pipes. At least, she was able to enjoy them during the holidays.

Always hang onto your friends; you never know when they'll be gone.

## Louisiana Folklore

By MABELL KADLECEK

An excerpt from "Louisiana Kisatchie Hills" as told to Mabel by Mr. Sweat.

Pine Grove Baptist Cemetery is beside the Pine Grove Baptist Church along out in the forest. Mr. Sweat said, "I used to come here to Pine Grove Baptist Cemetery when they just had a graveyard.

This graveyard started when a man went AWOL from the Army and he hid out back here while working. His little boy died of diphtheria and that's who started this cemetery. There used to be wild animals in the woods here, they sound like a woman screaming."

"I never dreamed I'd ever see a church setting back here in these woods." Walking through the cemetery, Mr. Sweat commented on its inhabitants - "This old man buried here made enough whiskey to put Devil's Swamp out of its banks.

He was born back there in 1863. Now my great grandpa was bad about drinking, he'd go there and get his liquor." When he'd get down in the Devil's Swamp, he'd holler, "Hey, Uncle Joe, you got company." And Joe would say,

## Chili Meat Loaf

Makes 6 servings

1 cup tomato sauce, divided  
3 Tbsp. Splenda Granular, divided  
2 tsp. prepared yellow mustard  
1 1/2 tsp. chili powder, divided  
1 Tbsp. dried onion flakes  
1 Tbsp. dried parsley flakes  
1/2 tsp. salt  
1 lb. extra-lean ground turkey or beef  
1/4 cup Italian seasoned breadcrumbs

Preheat oven to 350° and coat a 9x5-inch nonstick loaf pan with cooking spray. In a large bowl, combine 1/3 cup tomato sauce, 2 Tbsp. Splenda Granular, mustard, 1 tsp. chili powder, onion

"Bring 'em up." But before that old man died, he got converted and he was a preacher. "If we had to be angels to start with, we'd all be lost, wouldn't we?"

Doesn't the white sand look pretty on the graves? They get it out of the bottom of the creek. Some people take care of their graves and others forget about them. A lot of these graves have the same kind of markers. A lot of them had no markers at all and the folks got together, the church and the community, and bought the markers.

I used to walk here to Training Union and Church. They used to have Revival Meetings here. Not very many people had cars like in the Depression Days so a bunch of boys would carry loads of people.

One night a bunch of young people were sitting there, waiting for the others to come and they heard something groan by the dining table. The second time, they knew they heard something and they took off down that road just a-running."

"What was the groaning?" "That's what they didn't know. They were afraid it was somebody from the cemetery and they didn't wait to find out."

flakes, parsley flakes and salt. Mix well. Add ground meat and breadcrumbs to combined mixture and stir well. Shape into a loaf and pat into a loaf pan. In a small bowl, combine and mix remaining tomato sauce, chili powder and Splenda Granular. Spoon mixture over top of meat loaf. Bake 55 to 60 minutes. Remove meat loaf from oven and let cool for 5 minutes before slicing.

Nutritional Information: 120 Calories; 8g Total Carbohydrate; 5g Total Fat; 3g Saturated Fat; 30mg Cholesterol; 18g Protein; 1g Dietary Fiber; 2g Sugars. Exchanges per serving: 1/2 Starch, 2 Meat.

For more information and recipes, visit www.dlife.com/healthy.

## G. Chenier Library events

Upcoming events for the week of July 24 - Aug. 1 at the Grand Chenier library are:

"Crossword Daze" 10 a.m., Daily.

Thursday, July 24 - Kids Fun Day; Nintendo Wii Games and Online Computer Games, 1 p.m.

Friday, July 25 - LA Spirit Arts and Crafts, 1-3 p.m.; Story time, 3 p.m.

Monday, July 28 - Summer Fun Book Reading, 1-2 p.m.; Summer Reading Logs need to be turned in to our branch ASAP.

Tuesday, July 29 - Fitness Programs Elmcize for Children, 1 p.m.; Low Impact Walking Program, 2 p.m.

Wednesday, July 30 - Harvey Rabbit & Friends Summer Reading Entertainers, 9-10 a.m.

Thursday, July 31 - Kids Fun Day; Nintendo Wii Games and Online Computer Games, 1 p.m.

Friday, Aug 1 - Arts & Crafts, 1-3 p.m.; Story time, 3 p.m.

Please call 538-2214 for more information about weekly programs.

## Buy shoes in the right size

(NAPSA)-If the shoe fits, wear it. But fit doesn't mean forcing or squeezing your foot into the shoe. Nine out of 10 women wear shoes too tight for their feet, which can lead to bunions, hammer-toes, painful deformities or even surgery, according to the American Academy of Orthopaedic Surgeons. Prevent such complications by using these tips to get the right fit:

**Sizing it Up:** "Having your feet measured by a knowledgeable and experienced shoe salesperson or podiatrist yields more accurate results than measuring your own feet," explains Onlineshoes.com's Shoe Guru Ron Truselo. He or she will measure the length from heel to toe, width at the widest part of the foot, and arch length. It is important to not only wear the correct length (where toes are not cramped or touching the end of the shoe), but also width. Length is determined by a number, while width is indicated in letters. These vary among manufacturers, but the most common are N for narrow, M for medium and W for wide.

**Keeping the Fit:** Since feet are constantly changing, children's feet should be measured every six months while adults should have their feet measured whenever they purchase shoes in a store. When our muscles age, tendons start to lose their elasticity and feet will flatten out, becoming wider and longer. This can also be accelerated with weight gain. Women see the most change in foot width during pre-pregnancy, and feet typically don't return to their pre-pregnancy size after birth. Feet should be measured more frequently during periods of weight gain or weight loss.

**Staying Stylish:** Manufacturers are more dedicated than ever to creating fashionable shoes in a variety of widths, says Truselo. Look for adjustable styles that use buckles, straps and laces to help shoes fit better. Also, tall boots have become more accommodating for various-sized calves. Styles with pleats or gussets are best for a good fit.

**Start Shopping:** If you have wide or narrow feet, shopping online is a great option to quickly find a large selection of styles in your size and gain access to additional resources.

## — NOTICE —

The regularly scheduled meeting of Cameron Parish Mosquito Abatement District No. 1 for Thursday August 14, 2008 has been changed to Monday, August 11, 2008.

August Meeting Date:  
Monday, August 11, 2008  
5:00 p.m.  
Office of Mosquito Control  
146 Theriot Road  
Sweetlake, Louisiana

RUN: July 24 (JU-35)

## Cameron Parish School Board 2008-09 School Year EFFECTIVE MONDAY, JULY 28, 2008

Grand Lake, Hackberry, Johnson Bayou, South Cameron High Schools School Offices will open Monday through Friday with Office Hours until First Day of School:

8:00 AM – 3:00 PM

Cameron Parish School Board Office (temporary location – northwest corner of Grand Lake High School) Monday through Friday Office Hours when Schools are Open: 8:00 AM – 4:00 PM (Mon –Thurs) 8:00 AM – 3:30 PM (Fridays)

Personnel Reporting Dates (all personnel report to school sites as follows)

July 28th, 2008 Pupil Appraisal Team, SBLC Coordinator, Registered Nurses, Principals, Assistant Principals, Counselors, School Secretaries and Bookkeepers

August 4th, 2008 School Clerks

August 11, 2008 Teachers, School Food Service Managers and Technicians

August 12, 2008 Teacher Aides, Computer Lab Managers, Interpreters, Licensed Practical Nurses

August 12, 2008  
First Day of School  
for Cameron Parish Students

for more information, visit www.camsch.org

Run: July 24 (JU-39)

## CAMERON PARISH SCHOOL BOARD

2008-2009 Current Openings and New Positions

For all positions listed, applicants should download the appropriate application from www.camsch.org; and schedule an interview with the contact person listed for the position in which the applicant is interested. The applicant must submit the completed application to the contact person at the time of the interview. Applicants interested in itinerant positions involving two schools must schedule interviews with and provide copies of application to both contact persons.

Cameron Parish Pupil Appraisal Center

Contact: John White, Director (337) 540-0405

School Psychologist (full or part-time position available)

Johnson Bayou High School (4 day week)

Contact: Gene Reynolds, Principal (337) 569-2773 or 569-2168  
Certified Bus Driver

Deadline for all applications is Thursday, August 1, 2008 at 12:00 Noon

Available positions will continually be updated at www.camsch.org. Appointments will be approved at monthly meetings of the Cameron Parish School Board.

RUN: July 17, 24 & 31 (JU-22)

**PUBLIC NOTICE**

The Cameron Parish Police Jury has a need to procure a consulting firm for administering its Hazardous Mitigation Grand Project(s). A basic scope of services will be given to interested firms.

Interested parties can submit their proposal for consulting services to Earnestine "Tina" Horn, Cameron Parish Police Jury, 122-A Recreation Center Lane, (physical), P. O. Box 1280, (mailing), Cameron, Louisiana 70631. A response to this request must be hand-delivered or mailed to the above named person at the above named address in such a manner that it is received no later than 1:00 p.m. on Monday, July 28, 2008. The Cameron Parish Police Jury is an Equal Opportunity Employer and encourages all small and minority-owned firms, women's business enterprises and Section 3 businesses to apply. Run: July 17, 24 (Ju 18)

Calcasieu Parish Police Jury  
Calcasieu Parish Consortium  
Workforce Investment Board  
(WIB)

**LEGAL NOTICE**  
Small Business Capitalization  
Funds Available

Local Workforce Area 51  
(Calcasieu, Cameron, and Jeff  
Davis Parishes)

**ANNOUNCEMENT** This is to announce that the Workforce Investment Board (WIB) is seeking applications from eligible Businesses in Calcasieu, Cameron, and/or Jeff Davis Parishes who were impacted by Hurricane Rita. Businesses who need assistance to either obtain primary asset(s) or repair primary assets that are used to make income for businesses and will enable the business to get back up-and-running or move toward operation at full capacity within 90 days of the purchase or repair. It is the purpose of this Grant to "assist small businesses that were destroyed by hurricane Rita AND to help individuals create new self-employment opportunities."

**Eligibility Criteria:** In order to qualify for these funds (Up to \$5000), the business must meet and document the following criteria (according to State Policy Number 3, Change Number 1)

(1) Be a small business (less than 50 employees)  
(2) Business in operation for 3 years.  
(3) Be in good standing pre-Katrina/Rita

(4) Domiciled and operating in a FEMA disaster declared parish (Calcasieu, Cameron or Jeff Davis).

(5) Proof of application to traditional/non-traditional lending source.

(6) Budget/verification of use of fund

(7) Demonstrated Financial Need and Business Viability

(8) Proof of payment of taxes

(9) Proof of completion of entrepreneurial or micro-enterprise training (Classes will be made available)

**Funding Preference:** Any small business that meets the criteria above may apply for the funds. No industry will be targeted. Businesses who received any amount of funds from the National Emergency Grant in a previous funding cycle are NOT eligible to apply for these funds.

**How to Apply:** The process for application is through the Workforce Investment Board. Interested applicants must contact the WIB Staff to request the application packet so that the appropriate number may be produced. Contact WIB Staff at 337-721-3587 for your copy. Applicant Conferences will be held in Calcasieu Parish in Lake Charles.

**Applicant Conferences and locations will be held as follows:**

**1) Lake Charles, Louisiana** on Wednesday, August 6, at 10:00 a.m. and a Repeat workshop will be held at 2:00 p.m. at the Workforce Investment Board Office located in the Magnolia Building (6th Floor Conference Room) at 1011 Lakeshore Drive.

**You may Pick up your application** at either conference.

**Obtaining Applications after the Conferences:** Application Packets may be picked up by arrangement Monday through Friday from 9:00 a.m. to Noon or 2:00 p.m. to 4:00 p.m. Contact Ms. Juanita Poland at the WIB Office at 337-721-3587 to arrange to obtain your application after the Conferences have been held.

**Evaluation and Award:** Completed Applications and the documentation on eligibility criteria are to be turned in to the WIB Office (1011 Lakeshore Drive, Magnolia Building, 6th Floor, Suite 606). A Review Committee will evaluate each application. Applicants will be considered for award based on meeting and documenting Eligibility Criteria listed above and on achieving an average score of at least 85% on an evaluation form completed by the Review Committee. **Funds will be awarded** by the Executive Committee of the WIB at their regular monthly meeting (1st Tuesday of each month) or as needed. Funds are limited and will be awarded on a first-come, first-serve basis until available funds are obligated.

**Procurement Time Frame:** This procurement will remain open until all of the funds are obligated or until the end of the Contract period for the National Emergency Grant (NEG) Funds. The availability of NEG funds is limited, therefore awards will need to be paid by December 12, 2008. **The award of these funds must help move the business toward operation at full capacity, within 90 days of repair/purchase of asset.**

**Disclaimer:** The Workforce Investment Board reserves the right to cancel in part, or in its

entirety, this Procurement based upon the best interests of the Board. The Board also reserves the right to reject any non-responsive proposals. Any programs awarded are based upon actual receipt of and availability of funds provided through the Workforce Investment Act (WIA) National Emergency Grant (NEG) Funds.

**Contact Persons:** Questions on the process should be directed to Juanita Poland, Planner, or Jean M. Augustine, Director of the Workforce Investment Board by calling (337) 721-3584.

The Workforce Investment Board is an Equal Opportunity Employer/Program. Auxiliary aids and services are available to the disabled and also for persons with Limited English Proficiency upon request. (TDD 1-800-947-5277). The Calcasieu Parish Police Jury sponsors the program. Run: July 24, 31, Aug. 7 (Ju 21)

**Notice of Food and Milk Bid:**  
The Cameron Parish Head Start is now accepting food and milk bids for the upcoming 2008-2009 school session. Any one interested in submitting a bid must do so by 11:00 a.m. August 7, 2008. All bids must be sealed and clearly marked FOOD OR MILK BID. Bids can be mailed or hand delivered to 110 Volunteer Lane, Hackberry, LA. 70663. For additional information call the main office at 337-762-3979. Run: July 17, 24, 31, Aug. 7 (Ju 25)

**ADVERTISEMENT FOR BIDS**  
Sealed proposals for the construction of the following project will be received by the Cameron Parish Police Jury on **Monday, August 4, 2008 until 2:00 p.m.** at the Cameron Parish Police Jury Annex, 122A Recreation Ln., Cameron, LA (337-775-5719).

**Project Number: 2008-10  
OVERLAY OF PARISH  
ROAD 357**

The rules and regulations for the State Licensing Board for contractors will apply; the Project being classified as:

**II. Highway, Street, and Bridge Design**

Bids must be submitted on the prescribed form. All blank spaces for bid prices must be filled in, using ink and in both words and figures, with the unit price for the item or the lump sum for which the bid is made. The bidder shall provide all information indicated on the attached forms. Failure to provide the information indicated constitutes an informality in the proposal, rendering it subject to rejection by the owner.

All bids must be submitted in sealed envelopes bearing on the outside the name of the project on which the proposal is submitted. If forwarded by mail, the sealed envelope containing the proposal and marked as directed above, must be enclosed in another envelope addressed as specified in the proposal form, and preferably sent by registered mail.

For the purpose of award, the product of the approximate quantities of each item shown in the proposal by their respective unit and/or lump sum prices will be considered the amount of the bid on each item. The correct summation of these products will be the amount bid on the entire work.

Proposal forms will not be issued later than 24 hours prior to the hour and date set for receiving proposals. Every bid submitted shall be accompanied by a certified check or bid bond in the amount of 5% of the bid and shall be made payable to the Cameron Parish Police Jury.

Full information and proposal forms are available at the office of Lonnie G. Harper & Associates, Inc., 2746 Hwy 384, Bell City, Louisiana 70630, (337) 905-1079. Plans and specifications may be inspected upon deposit of \$50.00 per set. Bids must be submitted on proposal forms, provided by the engineer. Official action will be taken at the regularly scheduled Cameron Parish Police Jury meeting. The Cameron Parish Police Jury reserves the right to reject any or all the proposals and to waive informality. Cameron Parish Police Jury /s/ Magnus McGee, President Run: July 17, 24, & 31 (Ju 26)

**JOB APPLICATIONS**

The Johnson Bayou Recreation Center will be accepting applications for an Inside supervisor working shift work. Any persons who may be interested in applying can pick up an application at the recreation center during normal operating hours. (Monday through Sunday 2:00-8:00 p.m.) Applications must be turned in before 8:00p.m. on Friday August 15, 2008. For any additional information you may contact Christen Trahan @ 337-304-4622  
RUN: July 17, 24, 31 (Ju 31)

**JURY LIST**

The following Cameron Parish residents have been called to serve on a Petit Jury starting Monday, Aug. 18, 2008:

Jeanette S. Abshire, Hackberry; Regina R. Aucoin, Hackberry; Gary B. Badon, Hackberry; Cristy D. Ballard, Grand Chenier; Carolyn S. Benoit, Lake Charles; Chasity L. Boudreaux, Creole; Dawn R. Boudreaux, Cameron; James N. Boudreaux, Cameron; James R. Boudreaux, Lake Charles; Oren Boudreaux, Creole;

Ouida T. Boudreaux, Creole; Teresa Long R. Boudreaux, Lake Charles; Richard A. Brooks, Ragley; Carroll Todd Broussard, Grand Lake; Hung Van Bui, Cameron; James S. Calhoun, Bell City; Jimmy Carriere, Cameron; Chance Lane Case, Hackberry; Amanda Kaye Chaumont, Creole; Helen G. Chimento, Cameron;

Philip Glen Coleman, Grand Chenier; David G. Conner, Creole; David K. Conner, Cameron; Joseph W. Conner,

Creole; Andrea McDaniel Conner, Cameron; Ernest L. Constance, Hackberry; Jackson Joseph Constance, Cameron; Dinah R. Creppel, Grand Chenier; Ancil K. Delaney, Lake Charles; Kathleen M. Delaney, Lake Charles;

Marilyn P. Delaunay, Cameron; Anthony Wayne Dowden, Lake Charles; Gary L. Duhon, Lake Charles; John E. Duhon, Hackberry; Matthew S. Duhon, Grand Lake; Patricia A. East, Hackberry; Robert Allen Eaves, Jr., Cameron; Amanda K. Fontenot, Lake Charles; Albert R. Frerks, Jr., Cameron; Leroy Gray, Cameron;

Shayne H. Gremillion, Hackberry; Dalal P. Guillory, Lake Charles; Randall L. Guillory, Lake Charles; Richard J. Hay, Creole; Anthony F. Hebert, Gueydan; Freddie R. Hebert, Gueydan; David A. Hinton, Hackberry; Henry B. Janice, Lake Charles; Joshua J. Johnson, Lake Charles; Byron S. Jouett, Grand Lake;

Ashley M. Kelley, Grand Chenier; Carolyn S. Kiffe, Lake Charles; Tara K. LaBove, Cameron; Clarice R. LaFosse, Lake Charles; Lisa E. Lannin, Grand Lake; Eric P. LeDoux, Lake Charles; Brian S. LeJeune, Cameron; Sherree L. Lilly, Gueydan; Jessie A. Logan, Lake Charles; Rickie L. Maddox, Hackberry;

Janice M. Manuel, Hackberry; Aline N. Marshall, Cameron; Angus B. McCain, Lake Charles; Jerry McDaniel, Lake Charles; Lance J. McFarland, Lake Charles; Bettye L. Mewton, Cameron; Brandi R. Mhire, Bell City; Lydia Miller, Grand Lake; Ladacia R. Mouton, Cameron; JoAnn Niles, Big Lake; Charlotte Palozotto, Lake Charles; Anilbhain Patel, Cameron; Mary T. Patin, Hackberry; Tonia A. Penny, Hackberry; Kenneth J. Perrodin, Hackberry; Hayes P. Picou III, Grand Chenier; Nichols Newlin Poe, Grand Lake; Louise Poirier, Lake Charles; Glynn Q. Portie, Cameron; Donna M. Purdy, Lake Charles;

Donald P. Richard, Creole; Royce C. Richoux, Grand Lake; Ike A. Rome, Baton Rouge; Jerry Wayne Romero, Cameron; Jody J. Seay, Hackberry; Jerrel Otis Smith, Creole; Paula A. Smythe, Lake Charles; Gwen M. Snyder, Hackberry; Doyle L. Taylor, Lake Charles; Rebecca Lynn Taylor, Creole;

Albert J. Theriot, Creole; Crystal D. Troy Theriot, Sweet Lake; Robert W. Thomas, Cameron; Jerry R. Thompson, Kinder; Amanda G. Trahan, Lake Charles; Jeri H. Trahan, Hackberry; Anh Dung Tran, Cameron; Patricia S. Ware, Cameron; Mary A. Williams, Cameron; Sheryl V. Woodridge, Hackberry.  
Run: July 24 (Ju 32)

**PUBLIC NOTICE  
CAMERON PARISH COASTAL  
USE PERMIT APPLICATION**

Interested parties are hereby notified that the Coastal Management Section of the Cameron Parish Police Jury has received the following apparently complete application for a Coastal Use Permit in accordance with the rules and regulations of the Louisiana Coastal Resources Program and R.S. 49, 213.1, the State and Local Coastal Resources management Act of 1978, as amended.

C.U.P.#  
L.C.U.P.# 080713  
Name of Applicant: Travis Benoit, 1544 Hwy. 384, Grand Lake, LA 70607

Location of permit: Grand Lake, Section 14, T12S - R8W, Cameron Parish, Louisiana.

Character of Work: Mr. Benoit proposes to excavate approximately 3,000 cubic yards of clay, sand, and top soil to provide fill for future house pad and improve drainage of property. The excavated area will be used as a pond for recreational use.

The decision on whether to issue a permit will be based on an evaluation of the probable impacts of the proposed activity in accordance with Police Jury Ordinance. The decision will reflect in the national concern for both protection and utilization of important resources. The decision must be consistent and must represent an appropriate balancing of social, environmental and economic factors. All factors which may be relevant to the proposal will be considered; among these are flood and storm hazards, water quality, water supply, feasible alternative sites, drainage patterns, historical sites, economics, public and private benefits, coastal water dependency, impacts on natural features, compatibility with the natural and cultural setting and the extent of long term benefits or adverse impacts.

Certification that the proposed activity will not violate applicable water and air quality, laws, standards and regulations will be required before a permit is issued.

Any person may request, in writing, within the comment period specified in this notice, that a public hearing be held to consider this application. Request for public hearings shall state, with particularity, the reasons for holding a public hearing. Plans for the proposed work may be inspected at the Cameron Parish Police Jury Annex Building, P. O. Box 1280, Cameron, Louisiana, (337) 775-5718. Written comments should be mailed within 25 days from the date of this public notice to the Cameron Parish Police Jury, Post Office Box 1280, Cameron, Louisiana 70631. Sincerely,  
/s/ Myles Hebert,  
Myles Hebert  
Coastal Zone Administrator  
CAMERON PARISH  
POLICE JURY  
Run: July 24 (Ju 33)

**-12-  
EAST CHENIERE PERDUE  
FIELD  
08-1247**

**LEGAL NOTICE  
STATE OF LOUISIANA,**

**OFFICE OF CONSERVATION,  
BATON ROUGE, LOUISIANA.**

In accordance with the laws of the State of Louisiana, and with particular reference to the provisions of Title 30 of Louisiana Revised Statutes of 1950, a public hearing will be held in the Hearing Room, 1st Floor, LaSalle Building, 617 North 3 Street, Baton Rouge, Louisiana, at 9:00 a.m. on **TUESDAY, AUGUST 26, 2008**, upon the application of **PEL-TEX OIL COMPANY, LLC.**

At such hearing the Commissioner of Conservation will consider evidence relative to the issuance of Orders pertaining to the following matters relating to the **Camerina-Miogyp Zone, Reservoir A, SUA and SUB**, in the East Cheniere Perdue Field, Cameron Parish, Louisiana.

1. To establish rules and regulations governing the exploration for and production of gas and condensate from the Camerina-Miogyp Zone, Reservoir A.

2. To create two (2) drilling and production units for this zone and to force pool and integrate all separately owned tracts, mineral leases and other property interests within the units so created.

3. To designate a unit operator and a unit well for the units so created as may be appropriate.

4. To provide that any future wells drilled to the Camerina-Miogyp Zone, Reservoir A, SUA and SUB within or outside of the units created herein, should be located in accordance with the provisions of LAC 43:XXI.1901 et seq. (Statewide Order No. 29-E).

5. To provide that the Commissioner of Conservation may reclassify the reservoir by Supplemental Order and without the necessity of a public hearing should such reclassification be warranted, based on evidence furnished to the Commissioner of Conservation.

6. To consider such other matters as may be pertinent. The Camerina-Miogyp Zone, Reservoir A is hereby defined as that gas and condensate bearing zone encountered between the depths of 17,040' and 18,612' (electrical log measurements) in the Arco Oil & Gas Company-Miami Corp. T No. 1 Well, located in Section 32, Township 13 South, Range 7 West.

A plat is available for inspection in the Office of Conservation in **Baton Rouge and Lafayette, Louisiana** at [www.dnr.state.la.us/CONS/CONSEREN/hearings/pubhearings.htm](http://www.dnr.state.la.us/CONS/CONSEREN/hearings/pubhearings.htm).

All parties having interest therein shall take notice thereof.

**BY ORDER OF:  
JAMES H. WELSH  
COMMISSIONER OF  
CONSERVATION**

Baton Rouge, LA 71708; 7/22/08  
L lck

**IF ACCOMMODATIONS  
ARE REQUIRED UNDER  
AMERICANS WITH DISABILITIES ACT, PLEASE ADVISE  
THE OFFICE OF CONSERVATION-ENGINEERING DIVISION  
AT P.O. BOX 94275,  
BATON ROUGE, LA 70804-9275  
IN WRITING WITHIN  
TEN (10) WORKING DAYS OF  
THE HEARING DATE.**  
Run: July 24 (Ju 34)

**NOTICE FOR BIDS**

Acting under the authority of the Legislature of the State of Louisiana, the Cameron Parish School Board will receive sealed bids for the leasing of surface rights including the rights of range, fishing, and farming, on the following described lands:

SECTION-TOWNSHIP-RANGE; DESCRIPTION

16-12-1; Approximately three (3) miles East of Sabine River. Two (2) miles South of Calcasieu Parish line, containing approximately 640 acres.

16-14-3; Lot 1 30' x 125' more or less

16-14-3; Lot 2 62' x 126' more or less

16-14-3; Lot 3 62' x 100' more or less

16-14-3; Lot 4 60' x 291' more or less

16-14-3; Partial Section (332.96 acres) three (3) miles West of Vermilion Parish Line; bordering Grand Lake.

16-14-7; Located three-fourths (3/4) mile East of Highway 27; one (1) mile Northeast of Creole Intersection.

16-14-10; 47.13 acres, bordering the Southwest corner of Calcasieu Lake;

three (3) miles West of the ship channel in Cameron.

16-14-13; South end of Sabine Wildlife Refuge; five (5) miles North of Gulf of Mexico in Johnson Bayou area.

16-14-14; Three (3) miles East of Sabine Lake on Starks Canal,

approximately two (2) miles north of La Hwy 82 in Johnson Bayou.

16-15-3; Located in Grand Chenier area; three (3) miles West of Vermilion Parish line.

16-15-4; Approximately one (1) mile North of Highway 82 in Grand Chenier area; North of Rockefeller Refuge.

16-15-7; Along the Gulf; approximately one (1) mile South of the Mermentau River and five (5) miles West of lower Mud Lake; 22.46 acres.

(A description map may be seen in the School Board Office during normal working hours.)

All bids must be sealed; the envelope marked "Bid - Section 16, Township \_\_, Range \_\_" and may be forwarded through the U.S. Mail to the Cameron Parish School Board, P. O. Box 1548, Cameron, LA 70631. Bidder must offer an annual rental of not less than \$2.00 per acre for a lease with a primary term of five years to end July 31st, 2013. Annual renewal rentals will be due each year by July 31st, in order to continue the lease in effect. Cash payment or a certified or cashier's check, or teller's check, or an official check issued by a bank in favor of the Cameron Parish School Board for the amount of the annual rental for the first year shall accompany and be

**Show by example  
the importance  
of reading**

(NAPSA)-It's hard to read too much into the importance of literacy skills.

Children who read achieve. They boast higher test scores and recognize letters and numbers more often than their peers who read less frequently.

"Parents can set a great example by encouraging reading every day," said Reg Weaver, president of the National Education Association (NEA), which represents 3.2 million teachers and education support professionals. "Being a good reader builds a foundation for academic success and lifelong learning."

NEA's Read Across America offers the following tips to encourage children to read:

- Start Early. Begin sharing books with children during infancy, even as young as 6 weeks old. Also, encourage young children to talk about favorite books and to add new story lines and endings to stories they already know.

- Speak Up. Children who report that their parents encourage them to read are more likely to read a higher volume of books than those who say that their parents leave it up to them.

- Stock Up. Have a supply of newspapers, magazines and books around the house to persuade children to read instead of turning on the television or playing a video game.

- Build Skills. When you read aloud, stop to discuss unfamiliar words and pause to ask questions to help your child predict what is coming next. Ask children about characters in stories and why characters might act the way they do.

- Create Habits. Make reading a daily exercise, and set and reward reading goals. Build enthusiasm by providing a special treat when a reading target is reached. Positive reinforcement can help boost motivation.

"NEA's Read Across America helps to rev up young readers by making it fun," said Weaver.

For more information and tips, visit [www.nea.org/readacross](http://www.nea.org/readacross).



plus a fractional part of not less than one-sixth (1/6) of any and all crops produced and saved during the year. The value of the one-sixth (1/6) share shall not be considered in the awarding of the lease unless the bidder guarantees a specific amount which shall be added to and accompany the bid. Should the one-sixth (1/6) value of crops be less than the cash guarantee paid at the time of the lease, the Cameron Parish School Board shall demand such additional payment as necessary to bring the value adjustment to a full one-sixth (1/6) of crops produced and harvested on any and all listed sections, and thirty-five percent (35%) of cash market value of all alligators harvested by lessee. Lessor reserves the right to gather and dispose of alligator eggs from the lease premises, without any compensation to lessee.

The surface rights and privileges granted in the lease are restricted to range, trapping, hunting, fishing and these rights shall in no way, manner, or form interfere with the granting of a mineral lease or the full utilization of all rights and privileges granted in any mineral lease.

It is further agreed and understood between the contracting parties hereto that this lease shall be heritable, but shall not be subject to mortgage, pledge, hypothecation or seizure and sale, nor shall the said lease be assigned, subleased, or otherwise transferred by the said lessee unless authorized by prior written approval of the lessor. Such assignment, sublease or transfer of said lease shall be subject to terms and conditions as may be deemed proper by the lessor. Terms and conditions for subleasing may be obtained by contacting the Cameron Parish School Board land manager.

The Cameron Parish School Board does not warrant or provide ingress or egress to the leased premises. Ingress and egress is the sole responsibility of lessee.

Bids will be received until the hour of 4:00 p.m., August 11, 2008 at which time all bids received will be opened and considered in public session of the Cameron Parish School Board in Cameron, Louisiana.

The Board reserves the right to reject any and all bids received.

BY: /s/ Stephanie Rodrigue  
Stephanie Rodrigue  
Superintendent  
CAMERON PARISH  
SCHOOL BOARD  
Run: July 24, 31 & Aug. 7 (Ju 38)

The bid submitted must include the following information: Name of Bidder, Address of Bidder, Phone Number of Bidder.

If farming rights are utilized, bidder may offer annual rental plus a fractional part of not less than one-sixth (1/6) of any and all crops produced and saved during the year. The value of the one-sixth (1/6) share shall not be considered in the awarding of the lease unless the bidder guarantees a specific amount which shall be added to and accompany the bid. Should the one-sixth (1/6) value of crops be less than the cash guarantee paid at the time of the lease, the Cameron Parish School Board shall demand such additional payment as necessary to bring the value adjustment to a full one-sixth (1/6) of crops produced and harvested on any and all listed sections. Lessor reserves the right to gather and dispose of alligator eggs from the lease premises, without any compensation to lessee.

The surface rights and privileges granted in the lease are restricted to range, farming, and fishing and these rights shall in no way, manner, or form interfere with the granting of a mineral lease or the full utilization of all rights and privileges granted in any mineral lease.

It is further agreed and understood between the contracting parties hereto that this lease shall be heritable, but shall not be subject to mortgage, pledge, hypothecation or seizure and sale, nor shall the said lease be assigned, subleased, or otherwise transferred by the said lessee unless authorized by prior written approval of the lessor. Such assignment, sublease or transfer of said lease shall be subject to terms and conditions as may be deemed proper by the lessor. Terms and conditions for subleasing may be obtained by contacting the Cameron Parish School Board land manager.

The Cameron Parish School Board does not warrant or provide ingress or egress to the leased premises. Ingress and egress is the sole responsibility of lessee.

Bids will be received until the hour of 4:00 p.m., August 11, 2008, at which time all bids received will be opened and considered in public session of the Cameron Parish School Board in Cameron, Louisiana.

The Board reserves the right to reject any and all bids received.

BY: /s/ Stephanie Rodrigue  
Stephanie Rodrigue  
Superintendent  
CAMERON PARISH  
SCHOOL BOARD  
Run: July 24, 31 & Aug. 7 (Ju 36)

**NOTICE FOR BIDS**

Acting under the authority of the Legislature of the State of Louisiana, the Cameron Parish School Board will receive sealed bids for the leasing of all surface rights including the rights of range, trapping, hunting, fishing, and farming, on the following described lands for the unexpired term as indicated in the description below:

SECTION-TOWNSHIP-RANGE; UNEXPIRED TERM; DESCRIPTION

16-12-3; 1 year; 650.35 acres, more or less

16-12-5; 4 years; Containing approximately 641.00 acres; two (2) miles South of Calcasieu Parish Line and five and one-half (5 ?) miles East of Louisiana Highway 27

16-12-10; 4 years; Partial section; containing 435 acres, more or less, bordering Black Lake; three (3) miles West of Calcasieu Lake

16-14-8; 2 years; Three (3) miles East of Southeast Corner of Calcasieu Lake in the Boundaries of Sabine Refuge.

16-14-12; 1 year; Located in Grand Chenier area; bordered on the North by La. Highway 82; 561.21 acres.

16-15-5; 2 years; Located in Grand Chenier area; bordered on the North by La. Highway 82; 561.21 acres.

(A description map may be seen in the School Board Office during normal working hours.)

NOTE: Leaseholders on listed sections have until July 31, 2008 to renew the lease. If annual rental payment is received prior to this date the bids on these sections will be returned unopened.

All bids must be sealed; the envelope marked "Bid - Section 16, Township \_\_, Range \_\_" and may be forwarded through the U.S. Mail to the Cameron Parish School Board, P. O. Box 1548, Cameron, LA 70631. Bidder must offer an annual rental of not less than \$2.00 per acre for a lease for the unexpired term as listed above. Annual renewal rentals will be due each year by July 31st, in order to continue the lease in effect. Cash payment or a certified or cashier's check, or teller's check, or an official check issued by a bank in favor of the Cameron Parish School Board for the amount of the annual rental for the first year shall accompany and be deposited with the bid (no checks other than types noted above are acceptable) and the rental thus deposited shall be forfeited to the Board as liquidated damages if the successful bidder fails to enter into written contract in accordance with his bid within ten (10) days after acceptance by the Board. The bid submitted must include the following information: Name of Bidder, Address of Bidder, Phone Number of Bidder.

Bidders are reminded that the lease is for the unexpired term.

If farming rights are utilized, bidder may offer annual rental plus a fractional part of not less than one-sixth

**THE CAMERON PARISH PILOT**  
**August 13, 2008**  
**MINERAL LEASE SALE**  
**NOTICE OF PUBLICATION**  
**OFFICE OF MINERAL RESOURCES**  
**ON BEHALF OF**  
**THE STATE MINERAL BOARD**  
**FOR THE STATE OF LOUISIANA**  
**BATON ROUGE, LOUISIANA 70821**

By virtue of and in conformity with the provisions of Sub-part A of Chapter 2, Title 30 of the Louisiana Revised Statutes of 1950, as amended, and other applicable laws, sealed bids will be received in the Office of Mineral Resources, LaSalle Office Building, Baton Rouge, Louisiana (P. O. Box 2827, Baton Rouge, LA 70821) on or before 12:00 noon on Tuesday, August 12, 2008 for a lease to explore, drill for and produce oil, gas and any other liquid or gaseous minerals in solution and produced with oil or gas on the following described tracts (Tract Nos. 39996 through 40007, inclusive) to be opened publicly on Monday, August 11, 2008 in the LaSalle Office Building, 617 N. 3rd Street, Capitol Complex, Baton Rouge, Louisiana.

All bids shall offer a "Cash Payment" bonus, as set forth on the authorized bid form, for a lease having a primary term in conformity with whether said lease is an inland or offshore lease and the said bonus shall maintain the lease in full force and effect for the first year. If the bid offers an ANNUAL DELAY RENTAL, which is mandatory for leases with terms of more than one (1) year, it shall not be less than one-half (1/2) of the Cash Payment bonus bid and any bids containing an annual delay rental of less than one-half (1/2) of the Cash Payment bonus will be increased to the one-half (1/2) amount. Any lease granted shall be without warranty or any recourse whatsoever, either express or implied, against Lessor with regard to questions of title, not even for the return by Lessor of any payments received under the lease or of being otherwise successful therefore to Lessee. Under LSA- R. S. 30:127, the Minimum Royalty bid cannot be less than one-eighth (1/8) of all oil, gas or other liquid or gaseous minerals in solution and produced with oil or gas and saved or utilized. Rights to geothermal resources, free sulphur, potash, lignite, salt and other solid minerals are to be excluded from any oil or gas mineral lease and any bids providing to include those rights will be disregarded as to the extent of those rights only. All bidders are notified that the Mineral Board does not obligate itself to accept any bid, and that acceptance is at the sole discretion of the Mineral Board which reserves the right to reject any and all bids or to grant a lease on any portion of the tract advertised and to withdraw the remainder of the tract.

Act 8 of the 2000 Second Extraordinary Legislative Session established two additional fees to be collected from mineral lessees on all mineral leases awarded. An additional fee of \$15 per acre will be collected and deposited into the Louisiana Wildlife and Fisheries Conservation Fund. An additional fee of \$5 per acre will be collected and deposited into the Oil and Gas Regulatory Fund. A separate check in the amount of \$20 per acre made payable to the Office of Mineral Resources shall accompany the original (inside the sealed bid envelope). Bidders may use a regular check for payment of the fees. The successful bidder will not receive the lease executed by the State Mineral Board until the fees are received. If the bidder is unsuccessful, both the fee check and the Cash Payment bonus check will be returned to the unsuccessful bidder.

All leases awarded shall be executed upon and conditions provided in the current State lease form with all applicable riders appended thereto a copy of which is available for review in the Office of Mineral Resources, Petroleum Lands Division, Leasing Section.

**Certified check, cashier's check or bank money order** payable to the **OFFICE OF MINERAL RESOURCES** for the full amount of the aforesaid Cash Payment bonus shall be submitted with an accompanying check for the same, once submitted, may be thereafter withdrawn or canceled. Once the bid is opened and accepted by the Mineral Board, the accompanying checks or money order shall be negotiated by the Office of Mineral Resources and the proceeds disbursed in the manner required by law.

**SPECIAL NOTE:** Act 449 of the 2005 Regular Session of the Louisiana Legislature requires that a lease be registered with the Office of Mineral Resources. Registration with the Office of Mineral Resources consists of filing out the Prospective Leaseholder form and supplying this office with a certificate from the Secretary of State for the State of Louisiana attesting that the prospective leaseholder is in good standing as authorized to do business in the State of Louisiana. **UNDERSTAND** that being registered for nomination under other purpose **DOES NOT CONSTITUTE REGISTRATION AS A PROSPECTIVE LEASEHOLDER.** Act 449 specifically states that, "Only those bidders who are registered prospective leaseholders with the office of mineral resources shall be allowed to bid on tracts for the purpose of obtaining a mineral lease from the state of Louisiana." If an entity plans to submit a bid on a tract at a State mineral lease sale, that bid **WILL NOT** be accepted unless the bidding entity is properly registered with the Office of Mineral Resources prior to the lease sale at which its bid was submitted. **THERE WILL BE NO EXCEPTIONS TO THIS REQUIREMENT!!!**

Under rules promulgated by the Department of Natural Resources in accordance with authority granted by Act 106 of the First Extraordinary Session of the Louisiana Legislature of 2002, a fee equal to ten percent (10%) of the Cash Payment bonus bid is required to be submitted by separate check, accompanying the original bid (inside the sealed bid envelope). Bidders may use a regular check for the 10% fee. The successful bidder will not receive the lease executed by the State Mineral Board until the fee is received. If the bidder is unsuccessful, both the fee check and the Cash Payment bonus check will be returned to the unsuccessful bidder.

The successful bidder to whom the lease is awarded who receives the written lease executed by the State Mineral Board shall return the written lease, duly executed by Lessee (all of named Lessees on the lease instrument), within TWENTY (20) DAYS of receipt of same under penalty for failure to do so of forfeiture of the lease, including the Cash Payment bonus and fee tendered and negotiated.

Bids may be for the whole or any particularly described portion of the land advertised, but consistent with Mineral Board policy. All bidders are hereby notified that bids on portions of tracts shall be described by metes and bounds and be accompanied by a transparent plat outlining thereon the portion bid upon. The

scale of the transparent plat shall be the same as the scale of the OFFICIAL PLAT (NOT THE F & A PLAT) CONTAINED HEREIN and should identify the Point of Beginning with X and Y coordinates (if applicable), the Section, Township and Range, the Block No. (if offshore), the Parish, any adjacent existing State Mineral Leases, and, further, should clearly show the entire tract boundaries in relationship to the portion bid upon. It shall also show the Topographic features (Land and Water) of the area in detail similar to the Official Plat contained herein. Failure to follow these guidelines in submitting a portion bid may result in outright rejection of the portion bid by the State Mineral Board at its sole discretion.

**Notice is given that the State Mineral Board will include provisions in the lease to insure applicable payments attributable to the lease property without regard to adverse title claims, disputes, litigation or title failure and the language of those provisions is available to any interested party at the Office of Mineral Resources. Prospective bidders should carefully examine the same prior to submitting any bid.**

Some tracts available for leasing may be situated in the Louisiana Coastal Zone as defined in Act 361 of the Regular Session of the Louisiana Legislature of 1978 (promulgated as LSA-R. S. 49:213) and may be subject to the guidelines and regulations promulgated by the Coastal Management Section of the Department of Natural Resources for operations in the Coastal Zone.

**NOTE: All bids shall specify the Cash Payment bonus for leases as a price per acre amount and an aggregate total amount, where a bid for the entire tract shall be controlled by the bid price per acre multiplied by the specified amount of state owned/claimed acreage advertised for the tract, and a bid for a portion of the tract shall be controlled by the bid price per acre multiplied by the actual amount of state owned/claimed acreage within the polygon boundaries of the portion bid. For purposes of rental payments, the price bid per acre for the Cash Bonus, reduced if appropriate to the rental price per acre - but not less than one-half of the price per acre bid for the Cash Bonus - multiplied by the state owned/claimed acreage of the polygon bid (specified acreage if entire tract is bid; actual acreage in portion bid polygon) shall determine the amount of the rental payment throughout the primary term, regardless of any releases. For purposes of deferred development payments, one-half of the price per acre bid for the Cash Bonus multiplied by the state owned/claimed acreage within the remaining lease polygon, if any release has occurred, but outside of a unit polygon within which unit activity is ongoing, shall determine the amount of the deferred development payment.**

**NOTE:** Multiple portion bids on the same tract may be accepted by the State Mineral Board, even though they overlap. In the case of overlapping portion bids on the same tract, each of which is otherwise acceptable to the State, the State Mineral Board will indicate which one of the multiple bids on the same tract is most advantageous, considering the royalty, per acre cash payment, bonus, any additional consideration and what, in the sole discretion of the Mineral Board, is in the best interest of the State, and that bid (referred to as "Bid A") will be given priority in having a lease issued. The State Mineral Board will also indicate the acceptability of other portion bids on the same tract, if any, in the order of their acceptance (referred to respectively as "Bid B", "Bid C", etc.). Once the plat of "Bid A" 's portion has been rendered as accurately as possible, "Bid B" will be contacted and given an option to take a lease on the remaining portion of his portion bid acreage not overlapping "Bid A" 's bid portion, at "Bid B" 's per acre bid price (both as to bonus and rental); and thereafter, each successive bidder whose bid is otherwise acceptable will be given the option to take a lease on whatever portion remains of his portion bid acreage at his respective per acre bid price, less and except any prior portion bid acreage on which the successful bidder has opted to take a lease.

**NOTE:** If you require accommodations due to a disability in order to attend or participate in a meeting, please notify the Office of Mineral Resources at P.O. Box 2827, Baton Rouge, LA 70821-2827 or 225-342-4606 at least two (2) working days before the meeting date.

**OFFSHORE TRACT (Tract Nos. 39996 through 40009 inclusive, herein) are** the tracts which lie seaward of the Louisiana shoreline, as hereinafter defined, but landward of the survey line lying three nautical miles from the Louisiana shoreline, all as determined by the Report of the Special Master in the litigation in the Supreme Court of the United States styled United States v. State of Louisiana, et al, No. 9 Original and set out in the June 1975, Decree of the said Supreme Court. All bids on offshore tracts cannot specify a lease primary term exceeding five (5) years. Bids that specify a primary term exceeding five (5) years for an offshore tract may be rejected outright or the primary term changed to five (5) years at the sole discretion of the State Mineral Board.

**TRACT 39996 - Portion of Blocks 10, and 11, West Cameron Area, Revised, Cameron Parish, Louisiana**  
 The beds and bottoms of all water bodies belonging to the State of Louisiana located in Blocks 10, and 11, West Cameron Area, Revised, together with any present lands formed by accretion to the shoreline or islands formed therein, located in Cameron Parish, Louisiana, owned by and not presently under mineral lease as of August 13, 2008, from the State of Louisiana, the geographical area of which is more fully described as follows: Beginning at a point on the West Line of State Lease No. 19516 having Coordinates of X = 1,283,403.00 and Y = 399,767.00; thence South 50 degrees 46 minutes 19 seconds East 6,122.09 feet along the West Line of State Lease No. 19516 to its Southern Southeast Corner having Coordinates of X = 1,288,145.38 and Y = 395,895.34; said point being Northern Southeast Corner of State Lease No. 19517 and on the boundary line between Block 11 and Block 10 of the West Cameron Area; thence South 50 degrees 46 minutes 19 seconds East 3,328.69 feet along the Southern boundary of said State Lease No. 19517 to a point having Coordinates of X = 1,290,723.90 and Y = 393,790.24; said point being on the South Line of Block 10; thence West 2,578.52 feet to the southwest Corner of said Block 10 having Coordinates of X = 1,288,145.38 and Y = 393,790.24; thence West 4,742.38 feet along the South Line of said Block 11 to a point having Coordinates of X = 1,283,403.00 and Y = 393,790.24; thence North 5,976.76 feet to the point of beginning, containing approximately 502.24 acres, all as more particularly outlined on a plat on file in the Office of Mineral Resources, Department of Natural Resources. All bearings, distances and coordinates are based on Louisiana Coordinate System of 1927. (North or

South Zone).

**NOTE:** The above description of the Tract nominated for lease has been provided and corrected, where required, exclusively by the nomination party. Any mineral lease selected from this Tract and awarded by the Louisiana State Mineral Board shall be without warranty of any kind, either express, implied, or statutory, including, but not limited to, the implied warranties of merchantability and fitness for a particular purpose. Should the mineral lease awarded by the Louisiana State Mineral Board be subsequently modified, cancelled or abrogated due to the existence of conflicting leases, operating agreements, private claims or other future obligations or conditions which may affect all or any portion of the leased Tract, it shall not relieve the Lessee of the obligation to pay any bonus due thereon to the Louisiana State Mineral Board, nor shall the Louisiana State Mineral Board be obligated to refund any consideration paid by the Lessor prior to such modification, cancellation, or abrogation, including, but not limited to, bonuses, rentals and royalties.

**NOTE:** The State of Louisiana does hereby reserve, and this lease shall be subject to, the imprescriptible right of surface use in the nature of a servitude in favor of the Department of Natural Resources, including its Offices and Commissions, for the sole purpose of implementing, constructing, servicing and maintaining approved coastal zone management and/or restoration projects. Utilization of any and all rights derived under this lease by the mineral lessee, its agents, successors or assigns, shall not interfere with nor hinder the reasonable surface use by the Department of Natural Resources, its Offices or Commissions, as herein above reserved.

**TRACT 39997 - Portion of Block 21, West Cameron Area, Revised, Cameron Parish, Louisiana**  
 The beds and bottoms of all water bodies belonging to the State of Louisiana located in Block 21, West Cameron Area, Revised, together with any present lands formed by accretion to the shoreline or islands formed therein, located in Cameron Parish, Louisiana, owned by and not presently under mineral lease as of August 13, 2008, from the State of Louisiana, the geographical area of which is more fully described as follows: Beginning at the Northwest Corner of State Lease No. 19517; thence West 6,259.62 feet to a point on the West Line of said Block 21 having Coordinates of X = 1,288,145.38 and Y = 390,785.00; said point being on the Southern Southwest Corner of State Lease No. 19517; thence West 6,259.62 feet to a point on the West Line of said Block 21 having Coordinates of X = 1,288,145.38 and Y = 390,785.00; thence North 3,005.24 feet to the point of beginning, containing approximately 304.88 acres, all as more particularly outlined on a plat on file in the Office of Mineral Resources, Department of Natural Resources. All bearings, distances and coordinates are based on Louisiana Coordinate System of 1927. (North or South Zone).

**NOTE:** The above description of the Tract nominated for lease has been provided and corrected, where required, exclusively by the nomination party. Any mineral lease selected from this Tract and awarded by the Louisiana State Mineral Board shall be without warranty of any kind, either express, implied, or statutory, including, but not limited to, the implied warranties of merchantability and fitness for a particular purpose. Should the mineral lease awarded by the Louisiana State Mineral Board be subsequently modified, cancelled or abrogated due to the existence of conflicting leases, operating agreements, private claims or other future obligations or conditions which may affect all or any portion of the leased Tract, it shall not relieve the Lessee of the obligation to pay any bonus due thereon to the Louisiana State Mineral Board, nor shall the Louisiana State Mineral Board be obligated to refund any consideration paid by the Lessor prior to such modification, cancellation, or abrogation, including, but not limited to, bonuses, rentals and royalties.

**NOTE:** The State of Louisiana does hereby reserve, and this lease shall be subject to, the imprescriptible right of surface use in the nature of a servitude in favor of the Department of Natural Resources, including its Offices and Commissions, for the sole purpose of implementing, constructing, servicing and maintaining approved coastal zone management and/or restoration projects. Utilization of any and all rights derived under this lease by the mineral lessee, its agents, successors or assigns, shall not interfere with nor hinder the reasonable surface use by the Department of Natural Resources, its Offices or Commissions, as herein above reserved.

**TRACT 39998 - Portion of Block 20, West Cameron Area, Revised, Cameron Parish, Louisiana**  
 The beds and bottoms of all water bodies belonging to the State of Louisiana located in Block 20, West Cameron Area, Revised, together with any present lands formed by accretion to the shoreline or islands formed therein, located in Cameron Parish, Louisiana, owned by and not presently under mineral lease as of August 13, 2008, from the State of Louisiana, the geographical area of which is more fully described as follows: Beginning at the Northeast Corner of Block 20, West Cameron Area having Coordinates of X = 1,283,145.38 feet and Y = 393,790.24 feet; thence South 8,455.17 feet to a point on the Three Mile Line, as decreed by the Supreme Court of the United States, as determined by a Special Master appointed therein, in litigation styled *United States v. State of Louisiana et al No. 9 Original*, in 1975, having Coordinates of X = 1,288,145.38 feet and Y = 385,335.07 feet; thence North 83 degrees 19 minutes 40 Seconds East 5,449.93 feet along said Three Mile Line to a point having Coordinates of X = 1,283,403.00 feet and Y = 384,730.33 feet; thence South 8,455.17 feet to a point on the Three Mile Line, as decreed by the Supreme Court of the United States, as determined by a Special Master appointed therein, in litigation styled *United States v. State of Louisiana et al No. 9 Original*, in 1975, having Coordinates of X = 1,288,145.38 feet and Y = 385,335.07 feet; thence North 83 degrees 19 minutes 40 Seconds East 5,449.93 feet along said Three Mile Line to a point having Coordinates of X = 1,283,403.00 feet and Y = 384,730.33 feet; thence South 8,455.17 feet to a point on the Three Mile Line, as decreed by the Supreme Court of the United States, as determined by a Special Master appointed therein, in litigation styled *United States v. State of Louisiana et al No. 9 Original*, in 1975, having Coordinates of X = 1,288,145.38 feet and Y = 385,335.07 feet; thence North 83 degrees 19 minutes 40 Seconds East 5,449.93 feet along said Three Mile Line to a point having Coordinates of X = 1,283,403.00 feet and Y = 384,730.33 feet; thence South 8,455.17 feet to a point on the Three Mile Line, as decreed by the Supreme Court of the United States, as determined by a Special Master appointed therein, in litigation styled *United States v. State of Louisiana et al No. 9 Original*, in 1975, having Coordinates of X = 1,288,145.38 feet and Y = 385,335.07 feet; thence North 83 degrees 19 minutes 40 Seconds East 5,449.93 feet along said Three Mile Line to a point having Coordinates of X = 1,283,403.00 feet and Y = 384,730.33 feet; thence South 8,455.17 feet to a point on the Three Mile Line, as decreed by the Supreme Court of the United States, as determined by a Special Master appointed therein, in litigation styled *United States v. State of Louisiana et al No. 9 Original*, in 1975, having Coordinates of X = 1,288,145.38 feet and Y = 385,335.07 feet; thence North 83 degrees 19 minutes 40 Seconds East 5,449.93 feet along said Three Mile Line to a point having Coordinates of X = 1,283,403.00 feet and Y = 384,730.33 feet; thence South 8,455.17 feet to a point on the Three Mile Line, as decreed by the Supreme Court of the United States, as determined by a Special Master appointed therein, in litigation styled *United States v. State of Louisiana et al No. 9 Original*, in 1975, having Coordinates of X = 1,288,145.38 feet and Y = 385,335.07 feet; thence North 83 degrees 19 minutes 40 Seconds East 5,449.93 feet along said Three Mile Line to a point having Coordinates of X = 1,283,403.00 feet and Y = 384,730.33 feet; thence South 8,455.17 feet to a point on the Three Mile Line, as decreed by the Supreme Court of the United States, as determined by a Special Master appointed therein, in litigation styled *United States v. State of Louisiana et al No. 9 Original*, in 1975, having Coordinates of X = 1,288,145.38 feet and Y = 385,335.07 feet; thence North 83 degrees 19 minutes 40 Seconds East 5,449.93 feet along said Three Mile Line to a point having Coordinates of X = 1,283,403.00 feet and Y = 384,730.33 feet; thence South 8,455.17 feet to a point on the Three Mile Line, as decreed by the Supreme Court of the United States, as determined by a Special Master appointed therein, in litigation styled *United States v. State of Louisiana et al No. 9 Original*, in 1975, having Coordinates of X = 1,288,145.38 feet and Y = 385,335.07 feet; thence North 83 degrees 19 minutes 40 Seconds East 5,449.93 feet along said Three Mile Line to a point having Coordinates of X = 1,283,403.00 feet and Y = 384,730.33 feet; thence South 8,455.17 feet to a point on the Three Mile Line, as decreed by the Supreme Court of the United States, as determined by a Special Master appointed therein, in litigation styled *United States v. State of Louisiana et al No. 9 Original*, in 1975, having Coordinates of X = 1,288,145.38 feet and Y = 385,335.07 feet; thence North 83 degrees 19 minutes 40 Seconds East 5,449.93 feet along said Three Mile Line to a point having Coordinates of X = 1,283,403.00 feet and Y = 384,730.33 feet; thence South 8,455.17 feet to a point on the Three Mile Line, as decreed by the Supreme Court of the United States, as determined by a Special Master appointed therein, in litigation styled *United States v. State of Louisiana et al No. 9 Original*, in 1975, having Coordinates of X = 1,288,145.38 feet and Y = 385,335.07 feet; thence North 83 degrees 19 minutes 40 Seconds East 5,449.93 feet along said Three Mile Line to a point having Coordinates of X = 1,283,403.00 feet and Y = 384,730.33 feet; thence South 8,455.17 feet to a point on the Three Mile Line, as decreed by the Supreme Court of the United States, as determined by a Special Master appointed therein, in litigation styled *United States v. State of Louisiana et al No. 9 Original*, in 1975, having Coordinates of X = 1,288,145.38 feet and Y = 385,335.07 feet; thence North 83 degrees 19 minutes 40 Seconds East 5,449.93 feet along said Three Mile Line to a point having Coordinates of X = 1,283,403.00 feet and Y = 384,730.33 feet; thence South 8,455.17 feet to a point on the Three Mile Line, as decreed by the Supreme Court of the United States, as determined by a Special Master appointed therein, in litigation styled *United States v. State of Louisiana et al No. 9 Original*, in 1975, having Coordinates of X = 1,288,145.38 feet and Y = 385,335.07 feet; thence North 83 degrees 19 minutes 40 Seconds East 5,449.93 feet along said Three Mile Line to a point having Coordinates of X = 1,283,403.00 feet and Y = 384,730.33 feet; thence South 8,455.17 feet to a point on the Three Mile Line, as decreed by the Supreme Court of the United States, as determined by a Special Master appointed therein, in litigation styled *United States v. State of Louisiana et al No. 9 Original*, in 1975, having Coordinates of X = 1,288,145.38 feet and Y = 385,335.07 feet; thence North 83 degrees 19 minutes 40 Seconds East 5,449.93 feet along said Three Mile Line to a point having Coordinates of X = 1,283,403.00 feet and Y = 384,730.33 feet; thence South 8,455.17 feet to a point on the Three Mile Line, as decreed by the Supreme Court of the United States, as determined by a Special Master appointed therein, in litigation styled *United States v. State of Louisiana et al No. 9 Original*, in 1975, having Coordinates of X = 1,288,145.38 feet and Y = 385,335.07 feet; thence North 83 degrees 19 minutes 40 Seconds East 5,449.93 feet along said Three Mile Line to a point having Coordinates of X = 1,283,403.00 feet and Y = 384,730.33 feet; thence South 8,455.17 feet to a point on the Three Mile Line, as decreed by the Supreme Court of the United States, as determined by a Special Master appointed therein, in litigation styled *United States v. State of Louisiana et al No. 9 Original*, in 1975, having Coordinates of X = 1,288,145.38 feet and Y = 385,335.07 feet; thence North 83 degrees 19 minutes 40 Seconds East 5,449.93 feet along said Three Mile Line to a point having Coordinates of X = 1,283,403.00 feet and Y = 384,730.33 feet; thence South 8,455.17 feet to a point on the Three Mile Line, as decreed by the Supreme Court of the United States, as determined by a Special Master appointed therein, in litigation styled *United States v. State of Louisiana et al No. 9 Original*, in 1975, having Coordinates of X = 1,288,145.38 feet and Y = 385,335.07 feet; thence North 83 degrees 19 minutes 40 Seconds East 5,449.93 feet along said Three Mile Line to a point having Coordinates of X = 1,283,403.00 feet and Y = 384,730.33 feet; thence South 8,455.17 feet to a point on the Three Mile Line, as decreed by the Supreme Court of the United States, as determined by a Special Master appointed therein, in litigation styled *United States v. State of Louisiana et al No. 9 Original*, in 1975, having Coordinates of X = 1,288,145.38 feet and Y = 385,335.07 feet; thence North 83 degrees 19 minutes 40 Seconds East 5,449.93 feet along said Three Mile Line to a point having Coordinates of X = 1,283,403.00 feet and Y = 384,730.33 feet; thence South 8,455.17 feet to a point on the Three Mile Line, as decreed by the Supreme Court of the United States, as determined by a Special Master appointed therein, in litigation styled *United States v. State of Louisiana et al No. 9 Original*, in 1975, having Coordinates of X = 1,288,145.38 feet and Y = 385,335.07 feet; thence North 83 degrees 19 minutes 40 Seconds East 5,449.93 feet along said Three Mile Line to a point having Coordinates of X = 1,283,403.00 feet and Y = 384,730.33 feet; thence South 8,455.17 feet to a point on the Three Mile Line, as decreed by the Supreme Court of the United States, as determined by a Special Master appointed therein, in litigation styled *United States v. State of Louisiana et al No. 9 Original*, in 1975, having Coordinates of X = 1,288,145.38 feet and Y = 385,335.07 feet; thence North 83 degrees 19 minutes 40 Seconds East 5,449.93 feet along said Three Mile Line to a point having Coordinates of X = 1,283,403.00 feet and Y = 384,730.33 feet; thence South 8,455.17 feet to a point on the Three Mile Line, as decreed by the Supreme Court of the United States, as determined by a Special Master appointed therein, in litigation styled *United States v. State of Louisiana et al No. 9 Original*, in 1975, having Coordinates of X = 1,288,145.38 feet and Y = 385,335.07 feet; thence North 83 degrees 19 minutes 40 Seconds East 5,449.93 feet along said Three Mile Line to a point having Coordinates of X = 1,283,403.00 feet and Y = 384,730.33 feet; thence South 8,455.17 feet to a point on the Three Mile Line, as decreed by the Supreme Court of the United States, as determined by a Special Master appointed therein, in litigation styled *United States v. State of Louisiana et al No. 9 Original*, in 1975, having Coordinates of X = 1,288,145.38 feet and Y = 385,335.07 feet; thence North 83 degrees 19 minutes 40 Seconds East 5,449.93 feet along said Three Mile Line to a point having Coordinates of X = 1,283,403.00 feet and Y = 384,730.33 feet; thence South 8,455.17 feet to a point on the Three Mile Line, as decreed by the Supreme Court of the United States, as determined by a Special Master appointed therein, in litigation styled *United States v. State of Louisiana et al No. 9 Original*, in 1975, having Coordinates of X = 1,288,145.38 feet and Y = 385,335.07 feet; thence North 83 degrees 19 minutes 40 Seconds East 5,449.93 feet along said Three Mile Line to a point having Coordinates of X = 1,283,403.00 feet and Y = 384,730.33 feet; thence South 8,455.17 feet to a point on the Three Mile Line, as decreed by the Supreme Court of the United States, as determined by a Special Master appointed therein, in litigation styled *United States v. State of Louisiana et al No. 9 Original*, in 1975, having Coordinates of X = 1,288,145.38 feet and Y = 385,335.07 feet; thence North 83 degrees 19 minutes 40 Seconds East 5,449.93 feet along said Three Mile Line to a point having Coordinates of X = 1,283,403.00 feet and Y = 384,730.33 feet; thence South 8,455.17 feet to a point on the Three Mile Line, as decreed by the Supreme Court of the United States, as determined by a Special Master appointed therein, in litigation styled *United States v. State of Louisiana et al No. 9 Original*, in 1975, having Coordinates of X = 1,288,145.38 feet and Y = 385,335.07 feet; thence North 83 degrees 19 minutes 40 Seconds East 5,449.93 feet along said Three Mile Line to a point having Coordinates of X = 1,283,403.00 feet and Y = 384,730.33 feet; thence South 8,455.17 feet to a point on the Three Mile Line, as decreed by the Supreme Court of the United States, as determined by a Special Master appointed therein, in litigation styled *United States v. State of Louisiana et al No. 9 Original*, in 1975, having Coordinates of X = 1,288,145.38 feet and Y = 385,335.07 feet; thence North 83 degrees 19 minutes 40 Seconds East 5,449.93 feet along said Three Mile Line to a point having Coordinates of X = 1,283,403.00 feet and Y = 384,730.33 feet; thence South 8,455.17 feet to a point on the Three Mile Line, as decreed by the Supreme Court of the United States, as determined by a Special Master appointed therein, in litigation styled *United States v. State of Louisiana et al No. 9 Original*, in 1975, having Coordinates of X = 1,288,145.38 feet and Y = 385,335.07 feet; thence North 83 degrees 19 minutes 40 Seconds East 5,449.93 feet along said Three Mile Line to a point having Coordinates of X = 1,283,403.00 feet and Y = 384,730.33 feet; thence South 8,455.17 feet to a point on the Three Mile Line, as decreed by the Supreme Court of the United States, as determined by a Special Master appointed therein, in litigation styled *United States v. State of Louisiana et al No. 9 Original*, in 1975, having Coordinates of X = 1,288,145.38 feet and Y = 385,335.07 feet; thence North 83 degrees 19 minutes 40 Seconds East 5,449.93 feet along said Three Mile Line to a point having Coordinates of X = 1,283,403.00 feet and Y = 384,730.33 feet; thence South 8,455.17 feet to a point on the Three Mile Line, as decreed by the Supreme Court of the United States, as determined by a Special Master appointed therein, in litigation styled *United States v. State of Louisiana et al No. 9 Original*, in 1975, having Coordinates of X = 1,288,145.38 feet and Y = 385,335.07 feet; thence North 83 degrees 19 minutes 40 Seconds East 5,449.93 feet along said Three Mile Line to a point having Coordinates of X = 1,283,403.00 feet and Y = 384,730.33 feet; thence South 8,455.17 feet to a point on the Three Mile Line, as decreed by the Supreme Court of the United States, as determined by a Special Master appointed therein, in litigation styled *United States v. State of Louisiana et al No. 9 Original*, in 1975, having Coordinates of X = 1,288,145.38 feet and Y = 385,335.07 feet; thence North 83 degrees 19 minutes 40 Seconds East 5,449.93 feet along said Three Mile Line to a point having Coordinates of X = 1,283,403.00 feet and Y = 384,730.33 feet; thence South 8,455.17 feet to a point on the Three Mile Line, as decreed by the Supreme Court of the United States, as determined by a Special Master appointed therein, in litigation styled *United States v. State of Louisiana et al No. 9 Original*, in 1975, having Coordinates of X = 1,288,145.38 feet and Y = 385,335.07 feet; thence North 83 degrees 19 minutes 40 Seconds East 5,449.93 feet along said Three Mile Line to a point having Coordinates of X = 1,283,403.00 feet and Y = 384,730.33 feet; thence South 8,455.17 feet to a point on the Three Mile Line, as decreed by the Supreme Court of the United States, as determined by a Special Master appointed therein, in litigation styled *United States v. State of Louisiana et al No. 9 Original*, in 1975, having Coordinates of X = 1,288,145.38 feet and Y = 385,335.07 feet; thence North 83 degrees 19 minutes 40 Seconds East 5,449.93 feet along said Three Mile Line to a point having Coordinates of X = 1,283,403.00 feet and Y = 384,730.33 feet; thence South 8,455.17 feet to a point on the Three Mile Line, as decreed by the Supreme Court of the United States, as determined by a Special Master appointed therein, in litigation styled *United States v. State of Louisiana et al No. 9 Original*, in 1975, having Coordinates of X = 1,288,145.38 feet and Y = 385,335.07 feet; thence North 83 degrees 19 minutes 40 Seconds East 5,449.93 feet along said Three Mile Line to a point having Coordinates of X = 1,283,403.00 feet and Y = 384,730.33 feet; thence South 8,455.17 feet to a point on the Three Mile Line, as decreed by the Supreme Court of the United States, as determined by a Special Master appointed therein, in litigation styled *United States v. State of Louisiana et al No. 9 Original*, in 1975, having Coordinates of X = 1,288,145.38 feet and Y = 385,335.07 feet; thence North 83 degrees 19 minutes 40 Seconds East 5,449.93 feet along said Three Mile Line to a point having Coordinates of X = 1,283,403.00 feet and Y = 384,730.33 feet; thence South 8,455.17 feet to a point on the Three Mile Line, as decreed by the Supreme Court of the United States, as determined by a Special Master appointed therein, in litigation styled *United States v. State of Louisiana et al No. 9 Original*, in 1975, having Coordinates of X = 1,288,145.38 feet and Y = 385,335.07 feet; thence North 83 degrees 19 minutes 40 Seconds East 5,449.93 feet along said Three Mile Line to a point having Coordinates of X = 1,283,403.00 feet and Y = 384,730.33 feet; thence South 8,455.17 feet to a point on the Three Mile Line, as decreed by the Supreme Court of the United States, as determined by a Special Master appointed therein, in litigation styled *United States v. State of Louisiana et al No. 9 Original*, in 1975, having Coordinates of X = 1,288,145.38 feet and Y = 385,335.07 feet; thence North 83 degrees 19 minutes 40 Seconds East 5,449.93 feet along said Three Mile Line to a point having Coordinates of X = 1,283,403.00 feet and Y = 384,730.33 feet; thence South 8,455.17 feet to a point on the Three Mile Line, as decreed by the Supreme Court of the United States, as determined by a Special Master appointed therein, in litigation styled *United States v. State of Louisiana et al No. 9 Original*, in 1975, having Coordinates of X = 1,288,145.38 feet and Y = 385,335.07 feet; thence North 83 degrees 19 minutes 40 Seconds East 5,449.93 feet along said Three Mile Line to a point having Coordinates of X = 1,283,403.00 feet and Y = 384,730.33 feet; thence South 8,455.17 feet to a point on the Three Mile Line, as decreed by the Supreme Court of the United States, as determined by a Special Master appointed therein, in litigation styled *United States v. State of Louisiana et al No. 9 Original*, in 1975, having Coordinates of X = 1,288,145.38 feet and Y = 385,335.07 feet; thence North 83 degrees 19 minutes 40 Seconds East 5,449.93 feet along said Three Mile Line to a point having Coordinates of X = 1,283,403.00 feet and Y = 384,730.33 feet; thence South 8,455.17 feet to a point on the Three Mile Line, as decreed by the Supreme Court of the United States, as determined by a Special Master appointed therein, in litigation styled *United States v. State of Louisiana et al No. 9 Original*, in 1975, having Coordinates of X = 1,288,145.38 feet and Y = 385,335.07 feet; thence North 83 degrees 19 minutes 40 Seconds East 5,449.93 feet along said Three Mile Line to a point having Coordinates of X = 1,283,403.00 feet and Y = 384,730.33 feet; thence South 8,455.17 feet to a point on the Three Mile Line, as decreed by the Supreme Court of the United States, as determined by a Special Master appointed therein, in litigation styled *United States v. State of Louisiana et al No. 9 Original*, in 1975, having Coordinates of X = 1,288,145.38 feet and Y = 385,335.07 feet; thence North 83 degrees 19 minutes 40 Seconds East 5,449.93 feet along said Three Mile Line to a point having Coordinates of X = 1,283,403.00 feet and Y = 384,730.33 feet; thence South 8,455.17 feet to a point on the Three Mile Line, as decreed by the Supreme Court of the United States, as determined by a Special Master appointed therein, in litigation styled *United States v. State of Louisiana et al No. 9 Original*, in



## Tips on improving your vehicle's fuel economy

By LIZ ALLISON

(NAPSA)-Small changes in the way you drive can have a big effect on the fuel economy of just about any car.

Here are a few tips for making trips to the pump more efficient:

- **Pressure Check:** Government studies show that keeping your tires inflated to the recommended pressure can improve fuel economy by up to 3 percent. And you can bump those savings up to around 5 percent simply by using the proper grade of motor oil.

- **Shape Up With a Tune-Up:** Fixing a car that's noticeably out of tune can improve gas mileage by 4 percent. You can often save money on car maintenance by joining a car club such as AutoVantage.

- **Filter Maintenance:** Something as simple as a healthy air filter can improve your car's gas mileage by as much as 10 percent.

- **Slow Down:** Each 5 mph you drive over 60 mph is like paying an additional 20 cents per gallon of gas.

- **Don't Be Aggressive:** Accelerating and braking abruptly can lower your gas mileage by as much as 33 percent on the highway and 5 percent in the city.

- **Cruise, Don't Lose:** Each time you accelerate, your car expends more ener-

gy. Constant braking and accelerating causes less fuel efficiency and a faster trip to the pump. Use cruise control whenever possible.

- **Combine Trips:** Make a plan before you head out for errands and combine trips in your car. Making multiple short trips from a cold start can use twice as much fuel as one long multipurpose trip.

- **Consider a Hybrid:** If you are in the market for a new car, hybrid-electric vehicles combine the best features of the internal combustion engine with an electric motor. Another money-saving factor: the Energy Policy Act of 2005 established a federal tax credit for certain hybrids.

- **Shop Around:** If hybrids aren't for you, there are still plenty of conventional automobiles that can save you big bucks at the pump. According to the U.S. Department of Energy, the difference between a car that gets 20 mpg and one that gets 30 mpg amounts to about \$744 per year.

Liz Allison, a spokesperson for AutoVantage, is a NASCAR TV personality, radio host and best-selling author. She has served as a racing analyst for TNT, CNN/SI, TNN, CNN, ESPN and ESPN2.

**Slow Down:** Each 5 mph you drive over 60 mph is like paying an additional 20 cents per gallon of gas.

## Southern peas - a great summertime vegetable

By DAN GILL  
LSU AgCenter  
Horticulturist

Many vegetables planted in spring - such as tomatoes, squash, cucumbers and snap beans - are finishing or already have reached the end of their productive season. Once the harvest is finished, they should be removed from the garden.

But don't let those spots stay empty and unproductive through the rest of the summer. The Southern pea is a delicious and easy-to-grow vegetable you can plant right now.

Also known as field peas, cow peas, crowders and purple hulls, this vegetable loves heat and fills in beautifully between the early summer and fall crops. Besides having a delicious flavor, Southern peas are high in protein, calcium and phosphorus, and any extras you might produce are easily frozen for future use.

Cultivars differ mainly in their growth habit, pod color, seed color, eye color and seed type. When it is time to harvest, the pod color may be green, silver, white or purple, depending on the type you grow. Purple-podded cultivars are especially good since it is easy to tell when to harvest them - and the pods are easily spotted.

The seed color may be cream, buff, brown, black or spotted. Some cultivars have a different colored area on the seed called the eye. The eye may be pinkish maroon to black. The black-eyed pea is, perhaps, the most well-known of the Southern peas.

Seed types include crowder and noncrowder. A crowder pea is one in which the seeds are packed so tightly that they push against each other, producing seeds that are flattened or blunt on the ends. Noncrowders produce seeds that are rounded on the ends.

Southern peas are among the easiest vegetables to grow. They are not picky about the type of soil they grow in and do not require high levels of fertility. If you will be planting into an existing bed, soil preparation is very easy. Simply remove any old vegetable plants and mulch. Put the old vegetables into your compost pile and save the mulch to place back into the garden.

Spread a 2-inch layer of organic matter - such as compost, rotted leaves or aged manure - over the bed and thoroughly dig it into the upper 8 inches using a shovel or tiller. Rake the bed smooth, shape the sides (if necessary) and you are ready to plant.

No additional fertilizer is generally needed for these undemanding plants. Enough usually is left over from previous fertilizer applications. In addition, Southern peas are members of the legume family (Fabaceae) and can obtain nitrogen from the air through nitrogen-fixing bacteria that live in the soil and

their roots. Inoculants of these bacteria are available commercially and may be used to coat the seeds before planting to make sure the bacteria are present; however, this is generally not necessary.

Plant Southern pea seeds directly into prepared beds about 2 to 3 inches apart and one-half inch deep. After the row of peas is planted, place a 2-inch layer of mulch back over the bed, leaving the area immediately above the seeds open. Keep the bed well watered until the seeds come up.

Once the seedlings are up and growing, thin the young plants to a spacing of 4 to 6 inches and push the mulch around the base of the young plants. Planting seeds too thick and not thinning them to the proper spacing is likely to result in poor production. Keeping the bed well mulched is your best non-chemical defense against weeds. Regularly and promptly pull any weeds that make it up through the mulch.

When planted this time of year, Southern peas will be ready to harvest about 55 days from sowing the seeds. Harvest the pods when they are well-filled and have changed to a light straw, silver or purple color, depending on the cultivar because they shell easiest at this stage. The peas themselves should have a greenish appearance when shelled out.

Ideally, shell out and use the peas the day they are harvested. If the pods are going to be held for more than a day, they should be refrigerated until they can be shelled. Shelled peas may be stored for several days prior to cooking in a covered bowl in the refrigerator. This is helpful for gardeners with small plantings because it may take two or three pickings to get enough peas to serve the family. For longer storage, peas are easily frozen, and the quality is excellent when they are thawed and cooked later.

Although peas are fairly drought resistant, hot, dry weather can be a problem. Best yields are obtained when there is plenty of soil moisture, especially when the plants are young and after pod set begins.

On the other hand, excessive rain or watering, especially before flowering begins, may delay pod set and encourage excessive growth. Remember, this is one vegetable that doesn't need to be pampered.

Gardeners who are trying to minimize spraying will love growing Southern peas. They generally aren't bothered by any major insect or disease problems and usually can be grown with minimal or no spraying.

Other heat-tolerant vegetables that can be planted in midsummer are cantaloupe, luffa, okra, peppers (other than bell peppers), peanuts, pumpkins and watermelons.

## Pack your evacuation box before a storm strikes

Packing a box you can "grab and go" in case you need to evacuate could save you from financial disasters and hardships, according to LSU AgCenter family economist Dr. Jeanette Tucker.

"You may not be able to prevent hurricanes and storms that interrupt your routine or destroy your home, but you can make plans to keep them from disrupting everything," Tucker says. "An 'evacuation box' that's ready to 'grab and go' is one item every household should have to prevent financial disasters and other hardships."

Calling it a "grab-and-go box," for short, Tucker says it actually can be a plastic tub, a file box, a backpack or any other durable container you would like - although she says a fireproof and waterproof box or a waterproof backpack are recommended.

"The contents really are the important part," she says, adding, "Just put it all in something that's easy to store and easy to take with you, and make sure it's something that will hold up and help to protect the valuable items you have inside."

The LSU AgCenter expert says the contents should include copies of important papers, emergency cash or traveler's checks, lists of emergency phone numbers, safe deposit box keys and backups of computer records. It should always be packed and ready to "grab and go" in case you need to evacuate, she says.

"After hurricanes Katrina and Rita, people around here have a renewed sense of why it's important for every family and every individual to have evacuation plans in place," Tucker says. "Although everyone's emergency plans may be a little different, there are a lot of common elements - and some sort of evacuation 'to go' box should be one of those elements."

Tucker says to keep the "box" somewhere in your home where you can get to it easily.

"Then if you must evacuate, keep the box with you at all times," she says.

Among the items you'll probably want to include are: -Cash or traveler's checks -Expenses, since power outages can make ATMs and debit cards useless. -Rolls of quarters for

vending machines, pay phones, coin laundries and other needs.

-Emergency phone numbers, including those to doctors, pharmacies, financial advisers, clergy, repair contractors and family members. Don't forget to include cell phones of those who also may be away from home!

-Copies of prescriptions for medicines and eyeglasses, copies of children's immunization records and copies of medical, dental and prescription insurance cards (or policy information).

-Copies of auto, flood, renter's and/or homeowner's insurance policies (or at least the policy numbers) as well as contact information for your local agents and the companies' headquarters.

-Copies of other important papers such as deeds, titles, wills, trust documents, powers of attorney, health care directives, stock and bond certificates, recent investment statements, home inventory, birth certificates, death certificates, adoption certificates, marriage certificates, passports and/or other identity documents, employee benefit documents and federal and state tax returns (at least the first two pages).

-Backup copies of computerized financial records.

-Keys to safe deposit box.

-Combination to safe (if you have one).

-Negatives or digital copies of irreplaceable personal photos.

-Computer user names and passwords.

-Lists of Social Security numbers, credit card numbers, bank account numbers, driver's license numbers, loan numbers, investment account numbers and any other important numbers.

-List of debt obligations, due dates of payments and contact information for companies.

Tucker says it's also a good idea to place papers in sealed, waterproof plastic bags.

"Some planning and a few relatively simple preparations can prevent the unexpected from becoming even more disastrous," Tucker says.

For additional information about family financial matters or preparing for storms and hurricanes, contact your parish LSU AgCenter Extension office or visit [www.lsuagcenter.com](http://www.lsuagcenter.com).

## Love and your linen closet

(NAPSA)-With the popularity of gift registries, couples today may find it even easier to collect what they need to start their new lives. According to TheKnot.com, over \$19 billion is spent annually through wedding gift registries.

With linens as a top registry category, that can add up to a lot of sheets and towels. According to the experts at ClosetMaid, the average couple needs:

- Two sheet sets for seasonal changes and one basic white set for each bedroom

- Eight pillows (two for her, two for him and four for guests)

- Two comforters per bed (one for warmer and one for colder weather)

- One throw blanket per bed and an extra one for cozy fireplace cuddling

- Four bath towels, four hand towels and four washcloths per bathroom.

It's also a good idea to ask for a storage system to organize all those linens.

"Your linen closet doesn't have to be a haphazard mess of towels and blankets," observes Susan Follick of ClosetMaid. "With the appropriate storage system, your linen closet can promote a calm sense of order and organization."

Follick recommends ClosetMaid MasterSuite® as an elegant solution. Available in a variety of finishes including Clean White and new Antique White, it's a custom-designed line of laminate storage systems that meet individual needs through the company's authorized installing dealers.

"Varied shelf heights allow you to maintain the good practice of loosely folding and stacking towels to preserve their fluffiness," says Follick. "You need about 10 inches between shelves for sheets and 15 inches for towels. Multiple shelves can accommodate small stacks, making them less likely to fall over, and allow you to keep everyday items like bath towels at eye level."

For the do-it-yourself bride and homeowner, there's a special linen line of ventilated wire shelving. Their all-purpose linen shelving helps air to circulate and is available in both 12" and 16" shelf depths.

For more information, including an online tool such as the Visual Storage Planner, visit [www.closetmaid.com](http://www.closetmaid.com) or call (800) 874-0008 to help design your space.

**Come by and check out our selections of . . .**

- Embroidery • Promotional Products
- Gifts • Children's Clothing & Accessories
- School Uniforms
- Backpacks
- Chair Backs



**Outlaw Monograms & Children's Boutique**

Located in Holmwood at Hwy. 14 & 27  
Hours: Tuesday - Friday -- 9:30-5 & Saturday -- 9-1

**(337) 477-0404**

## Don't let a stroke strike you

Strokes are like small 'heart attacks' in the brain, and many of the same risk factors for cardiovascular disease increase stroke risk as well. Women have smaller blood vessels than men, and this may contribute to the higher incidence of stroke in women.

To reduce your risk, eliminate the modifiable risk factors: lower your LDL ("bad") cholesterol through diet, exercise or medication; keep diabetes and hypertension well controlled with diet and medication as well; and most importantly, stop smoking - this may be the largest of all risk factors.

A daily regimen of aspirin (81 mg) has been shown to lower stroke risk in women over 60 and should be used

with your doctor's approval, unless there is a reason not to (e.g., ulcers or bleeding problems.)

For women with multiple stroke risk factors, get a carotid Doppler or sonogram of the vessels in your neck - this may show plaque that can break off and cause a stroke. Major plaque can be treated with medication and/or surgery.

(Reprinted from Women's Health Advisor.)

## Attention Brides!

Why Drive? We'll Come To You For Wedding Invitations!!!

Personalized Service In Your Home, Offering The Perfect Wedding & Social Stationery by . . .

Tru, Carlson Craft And Birchcraft




Jeffra DeVine  
Sales Consultant

WEEKEND AND EVENING APPOINTMENTS AVAILABLE!!!



**Wise Ideas**

Call: **(337) 912-5063**

**Ask About FREE Napkins Offer!!**

**Cool Off In A Cool Aquatic Pool FREE Waterfall**

With Purchase of Pool Call For Details (Offer Expires 8/1/08)

**Custom Gunite Pools**

From **\$19,995<sup>00</sup>** - **\$250,000<sup>00</sup>**

**Aquatic Pools & Spas**

Custom Inground Pools Renovations • Service • Supplies

**337-583-2366 7 Days A Week**

## Pecans are packed with antioxidants

(NAPSA)-There's a new reason to go nuts for pecans. The latest research from the U.S. Department of Agriculture confirms pecans are the most antioxidant-rich tree nut.

Antioxidants are substances found in foods that protect against cell damage and, studies have shown, can help fight diseases such as Alzheimer's, Parkinson's, cancer and heart disease. Overall, pecans are ranked in the top 20 when it comes to foods with the highest antioxidant capacity. To

include more pecans in your diet, try these tips from the National Pecan Shellers Association:

- Sprinkle pecans on pancakes or waffles, in fruit-flavored yogurt or on top of hot or cold cereal.

- Top salads and veggies with pecans instead of cheese.

- Coat chicken or fish with pecans before baking.

- Bring about 20 pecan halves to work and snack on them throughout the day.

For more information, visit [www.ilovepecans.org](http://www.ilovepecans.org).

**Sales & Service — New & Used**

**We Service All Makes & Models**

**In Lake Charles**

**Shetler Lincoln Mercury**

478-1720 Or 1-800-460-5461 3201 HWY. 14

**Reliable**

**Month after month**

**Season after season**

**McKenziePestControl**  
THE HOME PROTECTORS

**Call 478-7826**

mckenziepestcontrol.com • Serving SW Louisiana since 1951

**B & L Spray Foam Insulation**

Specializing in:  
**INSUL-SOY**

**Soybean Based Open & Closed Cell Spray Foam**

- Spray Foam for New Homes • Re-Models & Upgrades
- Storage Buildings • Under Floor of Elevated Homes
- Coolers • Vessel Ice Compartments and More

— FREE ESTIMATES —  
Clifton & Carryl Hebert, Owners

Bus.: (337) 630-9027 Home: (337) 598-4790  
Pager: (337) 421-8382



Torey Little and SanDan

## Little takes 1st High School Rodeo finals

Torey McKay Little recently won 1st place in pole bending at the Louisiana High School Rodeo State Finals (6th, 7th and 8th grades) held in Kinder. She was also named "Rookie of the Year". She qualified for the state finals in pole bending, goat tying, ribbon roping, and break-away roping. Torey then participated in the High School Rodeo Association National finals in Gallop, New Mexico, June 30-July 5 with participants

from 42 states, four Canadian provinces and Australia where she rode her pole horse, SanDan, to win the title of National Reserve Pole Bending Champion. Her prizes included a college scholarship.

Torey will be a 7th grader at Hackberry High School this fall where she is a member of the Lady Mustangs Basketball team, the track team, dance line and 4-H Club. She is the daughter of

Stacy and Thad Little of Hackberry.

Her grandparents are Mae Doris and Ernie Little of Hackberry, Cindy and Dirk Desonier of Carlyss, Debbie and Lucien Cooper of DeQuincy. Great-grandmother is Lucille Perry of Fields.

Torey and her brother, Tayt, will be leaving for the National Little Britches Finals in Pueblo, Colo. this week.



A LIFE SIZE statue of a young woman can be seen behind these Cameron youngsters and Governor Jindal's wife in the garden at the Governor's Mansion in Baton Rouge. Another statue of a young woman, apparently a Greek goddess, has stood in front of Snider's Funeral Home for about 30 years.



## Goddesses in the gardens

By JERRY WISE

A Cameron teacher recently sent the Cameron Pilot, a sister publication to the DeQuincy News, a photo of three Cameron youngsters visiting with Gov. Jindal's wife in the Governor's Mansion garden while on a visit to Baton Rouge.

What caught my eye was, at first glance, was a buxom young woman in an old fashion dress standing behind the kids and Mrs. Jindal. A close look revealed that it was a life size statue.

I was then reminded of a life size statue of a young woman who has stood in the front of Hixson-Snider

Funeral Home in DeQuincy for at least 30 years. She is more demurely dressed in a flowing robe and appears to be a Greek goddess. She holds an arrow and there is a dog at her feet.

Tommy Lou Snider said that her late husband, Kenneth, saw the concrete statue on sale while on a trip to Houston years ago and brought it back in their station wagon, even though it weighed a lot.

After her husband's death a few years ago, Mrs. Snider sold the funeral home but

the Greek goddess has continued to stand vigil in front of the funeral home ever since.

The Snider goddess could be Artemis, who was the Goddess of the Hunt. She had 50 hounds, 50 wood nymphs and a quiver of silver arrows. She was the Protector of Young Women. Perhaps some reader can verify this.

The statue in the governor's garden is apparently of a young woman dressed in an 1800s style costume.



The Grand Lake Summer League Gator Swim Team

## G. Lake Gator swim team competes

The Grand Lake Summer League Gator Swim Team competed on July 12, at University Pool against the Sulphur Seals, City of Orange, and Greywood Estates swim teams.

The swimmers competed in age divisions in freestyle, backstroke, breast stroke, and butterfly. In the Free Relay, the swimmers each swim one leg of the freestyle stroke; and in the Medley Relay the swimmers each

swim a different stroke (back, breast, fly, and free).

The following results list the swimmer, age, and places in each of their events.

Matthew Brasseaux, 8, 9th free, 5th breast, 2nd fly. Zachary Brasseaux, 10, 12th free, 7th breast, 9th back.

Hannah Canter, 10, 10th free, 2nd back, 3rd fly.

Victoria Canter, 6, 3rd free, 1st breast, 1st back. Gabby Conner, 8, 5th free,

4th breast, 5th back. Morghan Dimas, 8, 6th free, 5th breast, 6th back.

Christian Doucet, 10, 7th free, 3rd breast, 4th back. Cavan Duhon, 10, 9th free, 5th breast, 6th fly.

Hope Duhon, 8, 7th free, 9th breast. Marissa Dupont, 9, 12th free, 4th breast, 6th back.

Erin Gilbert, 13, 3rd free, 2nd breast, 1st fly. Katelynn Granger, 9,

13th free, 8th breast, 8th back.

Andrew Moss, 9, 10th free, 8th back, 4th fly.

Ellie Nunez, 4, 5th free. Jarrett Nunez, 12, 2nd free, 2nd breast, 3rd fly.

Alanah Theriot, 8, 1st free, 1st breast, 1st back. Julie Theriot, 13, 9th free, 4th breast, 6th back.

Karissa Trahan, 13, 5th free, 5th breast, 3rd back

Age 8 & Under 100 yard Medley Relay

1st - Alanah Theriot, Morghan Dimas, Gabby Conner, Victoria Canter

Age 9-10 100 yard Medley Relay

3rd - Hannah Canter, Cavan Duhon, Marissa Dupont, Katelynn Granger

Age 9-10 100 yard Free Relay

5th - Hope Duhon, Christian Doucet, Zachary Brasseaux, Andrew Moss

Age 13-14 200 yard Free Relay

3rd - Erin Gilbert, Karissa Trahan, Julie Theriot, Jarrett S. Nunez

Age 10 & Under 100 Free Relay

1st - Morghan Dimas, Matthew Brasseaux, Victoria Canter, Alanah Theriot.

Age 10 & Under 100 Free Relay

1st - Morghan Dimas, Matthew Brasseaux, Victoria Canter, Alanah Theriot.

Age 10 & Under 100 Free Relay

1st - Morghan Dimas, Matthew Brasseaux, Victoria Canter, Alanah Theriot.

Age 10 & Under 100 Free Relay

1st - Morghan Dimas, Matthew Brasseaux, Victoria Canter, Alanah Theriot.

Age 10 & Under 100 Free Relay

1st - Morghan Dimas, Matthew Brasseaux, Victoria Canter, Alanah Theriot.

Age 10 & Under 100 Free Relay

1st - Morghan Dimas, Matthew Brasseaux, Victoria Canter, Alanah Theriot.

Age 10 & Under 100 Free Relay

1st - Morghan Dimas, Matthew Brasseaux, Victoria Canter, Alanah Theriot.

Age 10 & Under 100 Free Relay

1st - Morghan Dimas, Matthew Brasseaux, Victoria Canter, Alanah Theriot.

Age 10 & Under 100 Free Relay

1st - Morghan Dimas, Matthew Brasseaux, Victoria Canter, Alanah Theriot.

Age 10 & Under 100 Free Relay

1st - Morghan Dimas, Matthew Brasseaux, Victoria Canter, Alanah Theriot.

Age 10 & Under 100 Free Relay

1st - Morghan Dimas, Matthew Brasseaux, Victoria Canter, Alanah Theriot.

Age 10 & Under 100 Free Relay

1st - Morghan Dimas, Matthew Brasseaux, Victoria Canter, Alanah Theriot.

Age 10 & Under 100 Free Relay

1st - Morghan Dimas, Matthew Brasseaux, Victoria Canter, Alanah Theriot.

Age 10 & Under 100 Free Relay

1st - Morghan Dimas, Matthew Brasseaux, Victoria Canter, Alanah Theriot.

Age 10 & Under 100 Free Relay

1st - Morghan Dimas, Matthew Brasseaux, Victoria Canter, Alanah Theriot.

Age 10 & Under 100 Free Relay

1st - Morghan Dimas, Matthew Brasseaux, Victoria Canter, Alanah Theriot.

Age 10 & Under 100 Free Relay

1st - Morghan Dimas, Matthew Brasseaux, Victoria Canter, Alanah Theriot.

Age 10 & Under 100 Free Relay

1st - Morghan Dimas, Matthew Brasseaux, Victoria Canter, Alanah Theriot.

Age 10 & Under 100 Free Relay



AS THE Cameron Parish Library's final performer, Harvey Rabbit and Friends will be traveling throughout the parish to help the Cameron Parish Library wrap up its Summer Reading Program.

## Harvey Rabbit is Library's grand finale

As the Cameron Parish Library's final performer, Harvey Rabbit and Friends will be traveling throughout the parish to help the Cameron Parish Library wrap up the Summer Reading Program.

Harvey Rabbit and Friends will be at the following Cameron Parish Library branches:

Wednesday, July 30 - 9 a.m., Grand Chenier; 2 p.m., Cameron.

Thursday, July 31 - 9

a.m., Hackberry; 2 p.m., Johnson Bayou.

Friday, Aug. 1 - 10 a.m., Grand Lake.

All shows are free to the public and everyone is invited to attend.

The shows are supported by a grant from the Louisiana Division of the Arts, Office of Cultural Development, Department of Culture, Recreation and Tourism in cooperation with the Louisiana State Arts Council as administered by the Arts and Humanities Council of SWLA.

# Not a Bank Customer? Cameron State Bank Will Cash Your Check

## Payroll – Government – Tax Refund

Our Community Check Cashing service gives you an easy way to cash your payroll, government or tax refund check, even if you don't use any of our other banking services. Just stop by any of our locations throughout Southwest Louisiana and complete the brief, secure enrollment process. In less than two minutes, you'll be registered, able to cash your checks at any of our banking centers and automatically entered in our monthly drawing.

**Win Big** with **Community Check Cashing!**  
You can enter every time you cash a check:  
**\$100** Drawing Held Each Month  
**\$1000** Drawing in December

**First 3 money orders are FREE** every time you use **Community Check Cashing**

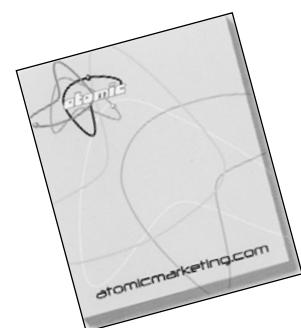
Some restrictions apply. Identification required. See branch for details. Check cashing fees will apply.



Personal Banking At Its Best!

### Sticky Notes

2 3/4" x 3" **Wow!**  
25 Sheets



Buy One Get One **FREE!!**  
Buy 500; Get 1,000  
@ **56¢ Ea.**  
\$10 Set Up Charge  
Shipping and Local Tax  
Charges Apply  
Includes Full Color  
Imprint on White or  
Sungold Paper Stock

Call For Other Great Deals



**Wise Ideas**  
PRINTING &  
PROMOTIONS

Call Jeffra DeViney  
**912-5063**  
203 E. Harrison St.  
(Inside DeQuincy News)  
www.bestwiseideas.com