



Ike devastates Cameron Parish

By CYNDI SELLERS

Cameron Parish was stunned this weekend to find itself blasted by another major hurricane, just three years after Hurricane Rita.

Residents were in a state of almost disbelief, when, having just returned from a mandatory evacuation for Hurricane Gustav, they were called on to pack up and leave again.

Even with the weather service predicting tides of up to 20 feet, many just couldn't comprehend how such a disaster could be looming again so soon.

Even so, by late Thursday, Sept. 11, nearly everyone had left lower Cameron Parish. The last five residents of Johnson Bayou had evacuated, the Cameron Ferry had been gone since noon, and only a few residents were still in the southeast part of the parish, making final preparations.

The Office of Emergency Preparedness and Sheriff's Department were planning to move out at 7 a.m., but the tide began to rise rapidly at 3 a.m. By 4:30 a.m. the water had reached the Family Dollar Store, and was several feet deep on Marshall Street near the Court House.

A command post was set up at the Cameron Prairie Refuge in the pre-dawn hours, checking off as the last stragglers fled the rising water.

As the day progressed, several people who had failed to heed warnings and leave in time were rescued by airboat. The relatively low winds made the rescues possible until around noon, when all operations were removed to the Calcasieu Sheriff's Office.

SEARCH AND RESCUE EFFORTS

In spite of a mandatory evacuation and all the warnings that Hurricane Ike's storm surge could exceed that of Hurricane Rita, a significant number of people remained in Hackberry and in Big Lake. Cameron Parish Office of Emergency Preparedness Director Clifton Hebert estimated a quarter of the Hackberry population stayed behind as the water rose.

As soon as the winds went down on Saturday, National Guard units were dispatched to rescue the many who found themselves at risk. Approximately 250 people were rescued from Hackberry and Big Lake over the course of three days.

Efforts were somewhat hindered, Hebert said, by the number of private individuals who launched boats and fanned out over the flooded area in violation of the evacuation order.

He made clear that these persons did not have permission to go into the flood zone, and would be arrested if caught by the Coast Guard.

As the rescue effort moved from water and air rescues to urban house to house searches, Hebert was glad to report that there were no deaths and only one injury, a Sheriff's Deputy with a broken ankle.



Hackberry clinic now in Sulphur

Due to storm damage from Hurricane Ike, the services of the Hackberry Rural Health Clinic, owned and operated by West Calcasieu Cameron Hospital, have been relocated temporarily to the Schlamp Family Medical Clinic, 921 First Avenue in Sulphur.

Julie Galley, RN, APRN, will see patients at this location. Because the hospital utilizes electronic medical records, all patient records are available immediately at the alternate site.

OES office now at Cam. Prairie

The Cameron Parish Office of Emergency Preparedness has relocated to the National Wildlife Refuge.

The new phone numbers are 719-233-3126, 719-205-3244, 719-205-3738, 719-209-3383, and 719-209-3416

Where to pick up your mail

Cameron, Creole, Grand Chenier and Johnson Bayour residents will be able to pick up their mail at the Cameron Post Office, which is temporarily relocated at the Drew Station Post Office, 5000 Lake St, Lake Charles. House of operation are Monday - Friday, 9 a.m. - 3 p.m. and Saturday, 9 a.m. - 12 p.m.

Hackberry residents may pick up their mail at the Sulphur Post Office.



THIS SOUTH CAMERON High "student" was late for class on Monday, but rescued on Tuesday. This cow had taken refuge during the storm on a covered walkway at the school. (Photo by Dana Baccigalopi.)

Cameron Parish school situation is assessed

Stephanie Rodrigue, Cameron Parish School Superintendent, released the following statement Tuesday on behalf of the Cameron Parish School Board.

There is no need to enroll students in other schools. Once the parish is safely accessible and families have returned, openings will be announced. Plans are in place for alternate sites, where necessary. Students will be taught by their same teachers, graduations will be conducted on schedule, and student activities and athletics will quickly resume. Cameron Parish School Board members are in constant communication in these efforts.

As soon as Grand Lake, Sweetlake and Big Lake are opened and families return, school openings with some alternate sites will be announced. Each school will open as soon as plans for each school are complete, not

necessarily all at the same time.

South Cameron students will not be housed at Grand Lake. Plans for an alternate site are in progress. Plans for Hackberry and Johnson Bayou will be announced as soon as we have a timeline from the restoration company.

Restoration needs will be assessed at Johnson Bayou and South Cameron High Schools today and tomorrow and will begin as quickly as the schools can be accessed.

SCHOOL ATHLETICS

Principals have been requested to communicate with coaches to adjust athletic practices and games and secure locations for alternate gyms. Information for Grand Lake, Hackberry and Johnson Bayou basketball plans and transportation will be announced as soon as all details are complete. There are no issues with Grand Lake's gym.

Grand Lake girls basketball practice is scheduled for Wednesday, 8:30 a.m.; Boys basketball, 10 a.m. until 12 noon on Wednesday, Thursday and Friday, all at Grand Lake High School. No games are scheduled at this time.

Hackberry High School athletes are asked to call coaches Terry Murphy at 513-3826 and Byron Gibbs at 540-2928.

Johnson Bayou athletes are asked to call coaches Darrell Lee at 304-6289, Todd Jinks at 794-6364 or Principal Gene Reynolds at 515-4910.

FOOTBALL GAME

South Cameron High School will play football at Kinder High School on

Saturday at 4 p.m. Football practices are scheduled at Kinder High School on Thursday and Friday at 8 a.m. Bus transportation to Kinder High School will be available. Bus pick-ups are as follows: 6:15 a.m., Holmwood Grocery, Grand Lake Baseball Field, Salon Elegance; 6:25 a.m., Chesson's Grocery, Burton Coliseum southwest corner; 6:30 a.m., St. Patrick's Church 6:35 a.m., Fuel Stop 36; 6:35 a.m., Wal-Mart, Nelson Road; 6:45 a.m., VF Factory Outlet. Athletes are asked to bring uniforms and equipment. Cheerleaders and danceline will receive information from their sponsors.

Employees are asked to take care of their homes and handle personal issues, such as FEMA and insurance, while the schools are forced to remain closed, so that the focus will be on our students when they return.

Payroll will be handled through direct deposit on Sept. 25. Check stubs will be mailed. All invoices and substitutes were paid before evacuation was called.

Cont. on Page 4.

Road Home issue clarified

Jennifer Jones issued this statement to Police Jurors to allay fears of Road Home recipients:

"If you received Road Home funding, you were required to obtain flood insurance on your replacement home. Although the Road Home program (OCS) is listed on your insurance policy, they are not a "loss payee". In other words, if your replacement home you purchased with Road Home money is destroyed, your insurance money goes to you, the homeowner, not the Road Home program."



FATHER JOSEPH MCGRATH, Pastor of Sacred Heart of Jesus and Our Lady Star of the Sea Catholic Churches, joined Stephanie Rodrigue, Superintendent of Schools, and others in a National Guard high water vehicle to check the schools and churches of lower Cameron Parish. Both were disappointed to find that what they observed from aerial shots did not come close to the harsh reality of the destruction on the ground.



COMMAND SGT. MAJ. Ricky Griffin of the Louisiana National Guard assisted Delores Duhon and Bobaloo the cat out of the UH60L helicopter at the Million Air hangar at Chennault Airport in Lake Charles. From there Wildlife and Fisheries agents assisted them in making contact with friends and relatives who could pick them up.

(U.S. Army Photo by Sgt. 1st Class Paul Meeker)

Pilot availability

By JERRY WISE

With most our lower Cameron parish subscribers displaced by the hurricane and with our newsstand rack sales sites out of business for the time being, here are notes on the Pilot's delivery:

Subscribers in lower Cameron--Cameron, Creole, Grand Chenier and Johnson Bayou--will be able to pick up their mailed Pilot along with their other mail at Drew Station in Lake Charles. Hackberry subscribers can pick up their Pilot and mail at the Sulphur post office.

Newsstand sales will be available at these locations:

*Brown's Neighborhood Center, 1001 Gulf Hwy, south of Lake Charles.

*Gaspards, 9346 Gulf Hwy, south of Lake Charles.

*Temporary news rack at the Drew Station location in Lake Charles.

J. B. clinic is relocated

Due to storm damage from Hurricane Ike, the services of the Johnson Bayou Rural Health Clinic, managed by West Calcasieu Cameron Hospital, have been temporarily relocated to the Family Care Center of Southwest Louisiana, 2345 Sampson Street in Westlake.

Because the hospital utilizes electronic medical records, all patient records are immediately available at the alternate site. Anyone needing services should call 439-1484. These are the offices of Jody George, MD and Brent Hutson, MD.

Subscribers who think they will be dislocated for some time, or permanently moved, should contact the Pilot's office and provide a new mailing address. The post office will not forward newspapers. Phone 1-800-256-7232; fax to 786-8131; or write Cameron Pilot, P. O. Box 995, DeQuincy, LA. 70633.

The Pilot may also be e-mailed at dequincynews@centurytel.net

The Pilot can still be accessed on its sister site dequincynews.com The link is found at the bottom of the page.

Schedule changed at pontoon bridges

Because of mechanical problems with the Grand Lake Pontoon Bridge, the schedule has changed for opening the pontoon bridges.

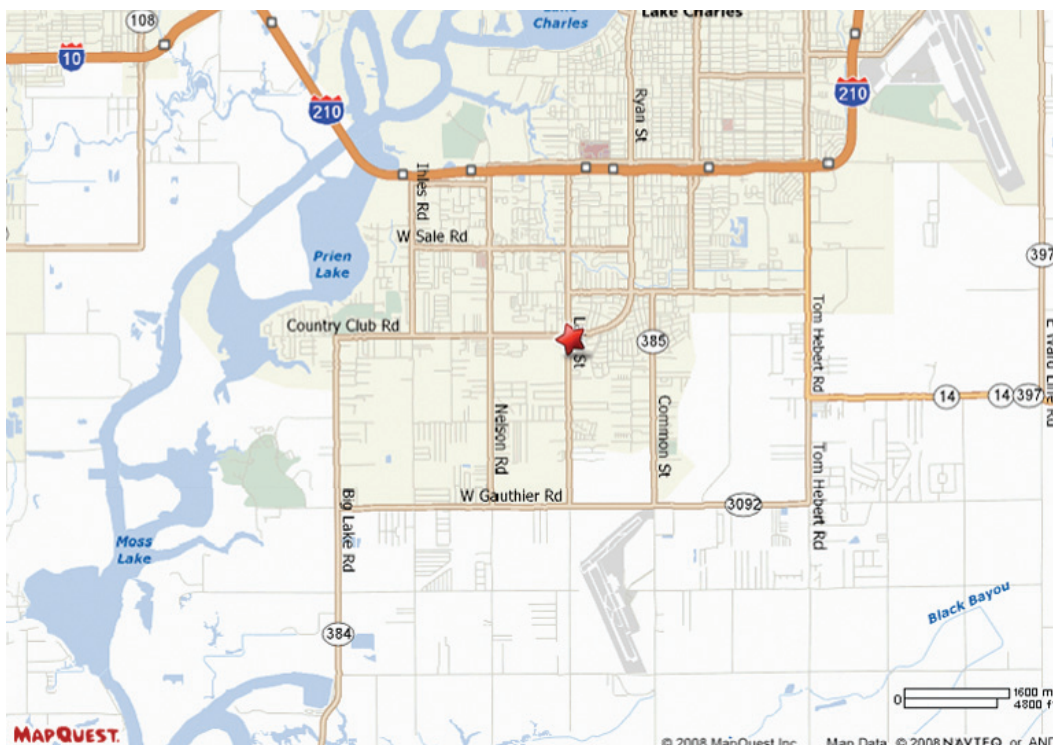
Starting today, the Black Bayou pontoon bridge will open to vehicular traffic 7-8 a.m. and 5-6 p.m. each day.

The Grand Lake pontoon bridge will not be open to traffic yet.

Legion meeting is cancelled

Cameron's American Legion Post 176 monthly meeting for Sept. 23 has been cancelled because of Hurricane Ike.

The post will re-schedule the meeting at a later date.



THIS MAP shows the location of the Drew Station sub-post office site in Lake Charles where Cameron, Creole, Grand Chenier, and Johnson Bayou residents will be able to pick up their mail for the time being. The facility is located at 5000 Lake Street just south of Country Club Road and north of Gauthier Road.



HURRICANE IKE'S storm surge brought "Daddy's Dream" up to a drainage ditch in Kelso Bayou.

(Photo by Paul Sellers.)



HACKBERRY BAPTIST Church came through the storm in fairly good shape. (Photo by Paul Sellers.)



MEMBERS OF the Louisiana National Guard drove by debris, including children's toys, littering Highway 27 in Hackberry. After Hurricane Ike left behind more water than either the Black Lake to the west or Calcasieu Lake to the east of Hackberry could contain, the guard members came in to support search and rescue missions.

(Photo by Sgt. Rebekah L. Malone, 225th Engineer Brigade Public Affairs Representative)

Information on Catholic churches told

In response to the devastation brought by Hurricane Ike and for the pastoral care of the faithful in the Cameron Parish, Bishop Glen John Provost has announced the following arrangements, effective until further notice:

For St. Peter the Apostle Parish in Hackberry and Our Lady of the Assumption Church in Johnson Bayou:

The Rev. Rommel Tolentino will reside and maintain an office at St. Teresa Church in Carlyss; Masses will be celebrated at the local Fire Station in Hackberry. Contact telephone: 274-2686

For Sacred Heart Parish in Creole and Our Lady Star of the Sea in Cameron:

The Rev. Joseph McGrath will reside at his family residence and maintain an office at St. Patrick Church in Sweetlake.

See Mass schedule below. Contact telephone - 304-3071

For St. Eugene Parish in Grand Chenier:

The Rev. Vincent Vadakkedath will reside at St. John Vianney Rectory in Bell City and maintain an office at St. Patrick Church in Sweetlake.

See Mass schedule below. Contact telephone - 570-4173

For St. Mary of the Lake Parish in Big Lake:

The Rev. Msgr. Harry Greig will reside in Lake Charles and maintain his office at the Chancery.



THE PARISH barn at Grand Lake still has water surrounding it from Hurricane Ike. (Photo by Cyndi Sellers.)

See Mass schedule below. Contact telephone - 598-3101 (Parish office); 439-7400 (Chancery office)

Masses at St. Patrick Church in Sweetlake for Cameron, Creole, Grand Chenier, and Big Lake: Saturday: 4:30 p.m.; Father Joseph McGrath Sunday: 8:00 a.m.; Msgr. Harry Greig 10:00 a.m.; Father Vincent Vadakkedath Weekday: Monday thru Friday, 5:30p.m.

Please continue to join us in prayer for our brothers and sisters who are suffering in the aftermath of Hurricane Ike.



SACRED HEART of Jesus Catholic Church in Creole was flooded. A few of the stained glass windows were broken, but most remained intact. (Photo by Cyndi Sellers.)



TRAILERS did not fare well through the strong winds and storm surge of Hurricane Ike. (Photo by Cyndi Sellers.)



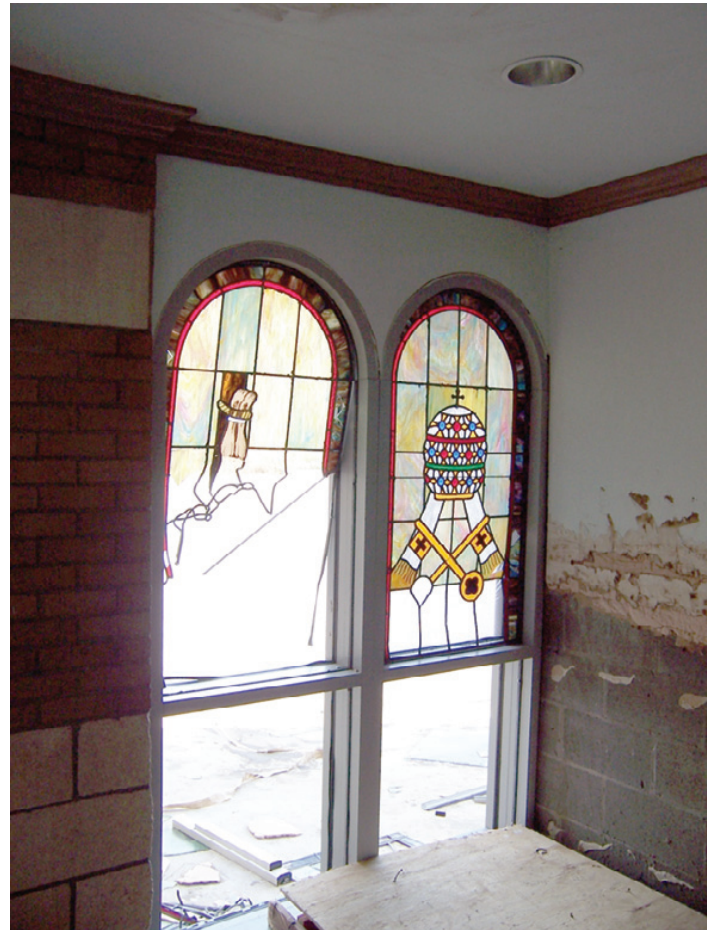
STAFFERS AT South Cameron Memorial Hospital found some unusual 'patients' Tuesday when they returned to Cameron to check on damage to the facility. (Photo by Cyndi Sellers.)



RESIDENTS OF Cameron Parish were able to begin checking on their homes Tuesday on a 'look and leave' basis. (Photo by Cyndi Sellers.)



Cameron Parish fashion statement



One of the broken stained glass windows at Sacred Heart of Jesus Catholic Church in Creole. (Photo by Cyndi Sellers.)



OUR LADY Star of the Sea Catholic Church in Cameron sustained some damage during Hurricane Ike. (Photo by Cyndi Sellers.)



SACRED HEART of Jesus Catholic Church in Creole was flooded. Above is one set of intact windows. (Photo by Cyndi Sellers.)

Success is never final and failure never fatal. It's courage that counts. - George F. Tilton



DR. WILLIAM HUTCHINSON, Bishop of The United Methodist Church - Louisiana Annual Conference and Rev. Darryl Tate, Executive Director of Louisiana Conference of the UMC Disaster Responses, Inc. are shown at Hackberry United Methodist Church inspecting for possible damages.

(Photo by Susan J. Meister, UMCOR)

Methodist Bishop assesses church damage in parish

By SUE CRISE

Leaders of the Louisiana Annual Conference of the United Methodist Church and clergy members of the Lake Charles District met at First United Methodist Church in Lake Charles to discuss the status of UM churches in Southwest Louisiana and to present information about available aid for residents. United Methodist leaders took a short tour of Cameron Parish in order to see first hand the damage caused by Hurricane Ike.

Rev. Darryl Tate, Executive Director of Louisiana Conference UMC Disaster Responses, Inc., provided information on relief efforts. UMCOR (United Methodist Committee on Relief) has already designated a fund for 2008 Hurricanes. Monies given to this account will be allocated towards relief efforts for any hurricane occurring in 2008.

Of these funds, 10 percent will be designated for rebuilding United Methodist churches in the disaster areas. Individuals wishing to make a donation to this fund can send their checks to UMCOR, Advance GCF, P.O. Box 9068, GPO, New York, NY 10087-9068; designate the account name "Hurricanes 2008 # 3019695".

The UMCOR Depot in Baldwin is initially providing 1,000 flood buckets for residents to assist with cleanup efforts and 1,000 health kits. In addition, 44,000 pounds of ice and a 53 foot trailer containing bottled water will be sent from Shreveport to arrive this week in Cameron Parish. These relief efforts will continue as long as there is a

need. Bishop William Hutchinson described how many people have said they feel weary from the emotional and psychological stresses of trying to recover from Hurricane Rita. "The entire Gulf coast has been affected by Ike and will need prayer to stay strong", states Bishop Hutchinson.

Louisiana residents are still working on recovering from Katrina and Rita. Now, just having Gustav and Ike, Louisiana has had four major storms in three years which has placed a heavy burden on the clergy and members of United Methodist churches.

At this time, it appears that three United Methodist churches in Cameron Parish may have serious damage. Many of the church members and one of the clergy has suffered losses due to the fact they were unable to obtain proper insurance after Rita. Because of the heavy loss, many residents may not be able to return to Cameron Parish.

Residents who do not have insurance and have suffered losses from Hurricane Ike, can contact FEMA at 1/800-621-FEMA to apply. Application can also be made at <http://www.fema.gov/assistance/index>. Residents have 60 days from the Declaration of Emergency by President Bush, which was Sept. 13 for Hurricane Ike, to apply for aid from FEMA.



Bishop issues statement on the hurricane

The following statement from Bishop Glen John Provost on the weekend of Hurricane Ike.

The Catholics of the Diocese of Lake Charles stand in solidarity with all who have suffered in this recent storm. Our prayers are particularly with those who have gone to sleep in the hope of the Resurrection and with their families.

Hurricane Ike has shaken us but not weakened us. On the weekend of the disaster, the Church celebrated the Exaltation of the Cross. St. Paul said to us at Mass, "We proclaim Christ crucified (I Corinthians 1:23)."

"The cross, that would be a stumbling block to some, is for us the power of God and the wisdom of God. (I Corinthians 1:24). To those who have suffered so much, may you see in your sufferings a share in the sufferings of Christ."

"Our hope for you is firm, for we know that as you share in the sufferings, you also share in the encouragement (II Corinthians 1:7). In every work of charity, in every profession of faith, may you see only your blessed hope."



ANXIOUS RESIDENTS of Cameron Parish gathered at the first Police Jury meeting after Hurricane Ike to get updates on conditions in the parish.

(Photo by Cyndi Sellers.)



CAMERON PARISH OEP director Clifton Hebert updates the Police Jury members and Cameron Parish residents on conditions in the parish.

(Photo by Cyndi Sellers.)

Tax filing exemption told due to Hurricane Ike

In the aftermath of Hurricane Ike, the Louisiana Department of Revenue (LDR) is granting a seven-day filing extension for corporate tax returns and third-quarter estimated taxes due on Monday, Sept. 15.

The filing extension is available to taxpayers in 14 parishes designated federal disaster areas by President Bush.

They are: Acadia, Beauregard, Calcasieu, Cameron, Iberia, Jefferson, Jefferson Davis, Lafourche,

Plaquemines, Sabine, St. Mary, Terrebonne, Vermilion, and Vernon Parishes.

The extended filing deadline is midnight, Sept. 22, 2008.

Taxpayers in federally declared disaster areas following Hurricane Ike can write "Hurricane Ike" in black on the top of their returns.

For more information, visit www.revenue.louisiana.gov.



The Wizard says, "There's no place like USA.gov."

USA.gov. Your official source for government info. 1 (800) FED-INFO

BE A BLOOD DONOR

Roastin' with Rosie Barbeque Festival
Jennings, LA
September 19-20
Call (337) 821-5534

This is your Louisiana.

LOUISIANA
OFFICE OF THE LT. GOVERNOR
Department of Culture, Recreation & Tourism
© 2008 The Louisiana Department of Culture, Recreation & Tourism

NOW OPEN

Cal-Cam Mini Storage

- Climate Controlled
- Storm Engineered

4 SIZES AVAILABLE • INEXPENSIVE RATES
NO STORM DAMAGE - SAME PRICES AS BEFORE STORM!
• HOURS •
Monday, Wednesday & Friday - 9:00 a.m. - 3:00 p.m.
CALL: 337-905-0077
For After Hours/Emergencies - 598-2558
325 W. Cal-Cam Rd. • Grand Lake

-The CAMERON PILOT-
(USPS 086980)
Telephones: (337)786-8004 or (337)786-2870

Jerry and Joy Wise, Editors & Publishers; Jeffra Wise DeViney, Advertising Manager; Shirley Johnson, Production Manager; Sue Crise, Julie Fletcher, Crystal Nix, Tina Poole, Dustin Royer, and Dawn Spears, Staff Members

The Cameron Pilot, 110 Asa St., P.O. Box 1486, Cameron, La. 70631. Published Weekly. Entered as periodical mail at Cameron, La., 70631 and Lake Charles, La., 70601. Post Office, Periodical Postage paid.

POSTMASTER: Send address changes to: The Cameron Pilot, P.O. Box 995, DeQuincy, La. 70633.
Subscription Rates: \$23.00 a year (tax included) in Cameron & Calcasieu Parishes; \$25.40 elsewhere in La., \$33.60 elsewhere in USA.

DIGNITY & RESPECT
Let Us Help You in Your Hour of Need

Planning a funeral is not an easy task, We're here to help you with. . .

- Traditional Funeral Services
- Cremation Options
- Pre-Arrangement Counseling
- Assistance With Insurance Benefits
- Veterans' Services
- Caring, Sensitive Staff Available 24 Hours A Day, 7 Days A Week

Hixson Offers Affordable Solutions For All Your Funeral needs.

Sometimes It's The Little Things That Make A Difference.

— Serving All Of Cameron Parish —

Hixson Funeral Homes

Hixson Lake Charles 3001 Ryan St. Lake Charles, LA 70601 337-439-2446	Hixson Sulphur 2051 E. Napoleon St. Sulphur, LA 70663 337-625-9171
--	---

CAMERON PARISH

WE WANT THE COMMUNITY TO KNOW...

we're here, we're working, we're ready!

To all of our Business and Residential customers—**CABLE TV, HIGH-SPEED INTERNET, and PHONE** service is available to Cameron Parish today.

Call today—we're here, working and ready to serve you!

Cameron Communications
Get connected.

1 800 737-3900 www.camtel.com

Tarpons to play in Kinder Saturday

By CHRIS & LAURIE MUELLER

Despite the devastation in Cameron parish from hurricane Ike, the South Cameron Tarpons will play their second game of the season Saturday at 4 p.m. in Kinder. The Tarpons who lost weeks 4-8 in 2005 due to Hurricane Rita will try to restore some normalcy to their program.

The Yellowjackets who have yet to play a game also due to problems with both Gustav and Ike were more than happy to accommodate the Tarpons by letting them use their facilities for practice at 8 a.m. Thursday and Friday.

Buses will be provided to transport players to Kinder High. Kinder head coach Jeff Wainwright has a lot of ties to the Cameron school having played for South Cameron and he and his wife are natives of Creole. "We understand somewhat what they

are going through" Wainwright said "it's a sad situation, but the reality is that we as communities must pull together and try to help them out as much as possible."

The Tarpons were able to get last week's game in a 19 to 18 victory over Vinton. The game was played last Tuesday to beat hurricane Ike. The Tarpons got 149 yards and a late touchdown in the 4th quarter form quarterback Dex Murphy to beat the Lions.

Both coaches are concerned about a lack of practice time due to the storm and Kinder has had games with Elton and Oakdale cancelled and South Cameron had their week 1 game with DeQuincy cancelled.

The Yellow Jackets who went 8-4 last year including a 14-0 victory over the Tarpons have a lot of speed even though they lost a number of players from last years squad due to graduation.

Pickup times for buses transporting South Cameron football players to Kinder for practice: 6:15 a.m. - Holmwood Grocery, Grandlake Baseball field, Salon Elegance; 6:25 a.m. - Chessons Grocery, Burton Coliseum (southwest corner); St Patrick's Church; 6:35 a.m. - Fuel stop 36; 6:35 a.m. - Walmart Nelson road; 6:45 a.m. - VF Factory Outlet. Athletes are asked to bring uniforms and equipment.



South Cameron High School News

South Cameron Tarpons vs. Kinder Yellowjackets game will be held Saturday, Sept. 20 at 4 p.m. in Kinder

Danceline practice will be held Sept. 17, 18, 19 from 1.30-3.30 p.m. at the South Lake Street sports complex.

Cheerleader practice will be held Sept. 19 at 10 a.m. at Ms. Orila's house, 7637 Chris Lane, off of Tank Farm Road.

Danceline and Cheerleading team members may ride one of three buses that are transporting the football teams to Kinder on Saturday. Times of pickup will be adjusted by bus drivers.

Sponsors and team members will be notified of times. If girls choose not to ride the bus, they must ride with their parents to the game.

For more information, contact Heidi Baccigalopi at 274-6060.

For the record

South Cameron High School Homecoming Court was incorrect in last week's issue of the Pilot. Below is the corrected names:

Eighth Grade - Karlee Primeaux, Becka Richard.

Ninth Grade - Breann DeBarge, Cami Richard.

Tenth Grade - Kristin Broussard, Jadah Primeaux.

Eleventh Grade - Devon Richard, Shelby Willis.

Twelfth Grade - Jerrica Boudreaux, Kimily Bourriaque, Melanie Hardy, Braids LaBove, Haley McCall, Falon Welch.

Homecoming is set for Thursday, Oct. 2.



concession and and restrooms will continue at that time, as well.

The Cameron Parish School Board Central Office reopened on Sunday and has been made available to other parish offices, in addition to school board business. Any public officials needing office space should call 905-5784, extension 114 for Angie Styron or 109 for Anna Murphy. Central office employees will be called to work when needed and will be notified of any necessary new assignments or relocations.

ASSISTANCE INFORMATION

Cameron Parish families and employees are encouraged to contact FEMA at www.fema.gov or by calling 1 (800) 621-3362. TTY users can dial 1 (800) 462-7585 to use the Federal Relay Service.

Information and registration for food stamps is available through www.dss.state.la.us or by calling 1-888-524-3578.

OEP Director Clifton Hebert is arranging for individual commodities assistance in both Grand Lake and Hackberry.

MAIL DELIVERY

Mail for Cameron and Johnson Bayou (70631), Creole (70632) and Grand Chenier (70643) is now available at Drew Station on Lake Street on Lake Charles. Mail for Hackberry (70645) is now available at the Sulphur Post Office.

For more information, Cameron Parish School Board families and employees are asked to check the website at www.camsch.org and listen to My State alert messages. Videography and photography of Cameron Parish are continually being added to the website. Families are advised that the aerial shots appear far more promising than what is the reality on the ground for most of the homes, schools and buildings in Cameron Parish.

Special Thanks to Cameron Parish OEP Director Clifton Hebert and Staff; Sheriff Theos Duhon and his Department; Cameron Parish First Responders; Cameron Parish Administrator Tina Horn; and Cameron Parish Police Jury for protecting lives and personal items by calling an early evacuation and ensuring safety by securing the parish until access is safe.

Cameron Parish School Board President Dwayne Sanner, Vice-President Scott Nunez, Loston McEvers, Karen Nunez, Marsha Trahan, Marvin Trahan, Dot Theriot and Stephanie Rodrigue, Superintendent of Schools.

Tarpons will not miss game due to Hurricane Ike

By JOHNATHAN MANNING American Press

Zeke Wainwright, is South Cameron's principal.

In 2005 South Cameron lost Weeks 4 through 8 when Hurricane Rita devastated Creole.

Against Vinton, the Tarpons got 149 yards and a late touchdown in the fourth quarter from Dex Murphy to beat the Lions.

The Yellow Jackets' recent history suggests another successful season - last year they went 8-4, including a 14-0 win over the Tarpons, and in 2006 they went 10-2.

The game will be the debut of Rodney Prosper as Kinder quarterback.

"They've got a lot of speed," LaLande said. "Even with a normal week, they would probably be 21-point favorites."

Pickup times for buses transporting South Cameron football players to Kinder for practice: 6:15 a.m. - Holmwood Grocery, Grand Lake Baseball Field, Salon Elegance; 6:25 a.m. - Chesson's Grocery, Burton Coliseum (southwest corner); 6:30 a.m. - St. Patrick's Church; 6:35 a.m. - Fuel Stop 36; 6:35 a.m. - Wal-Mart (Nelson Road); 6:45 a.m. - VF Factory Outlet. Athletes are asked to bring uniforms and equipment.

For more information visit www.camsch.org

Cameron drivers license office closed due to Ike

As of noon Sept. 15, the only Motor Vehicle offices not operational due to Hurricanes Gustav and Ike are the offices located in Cameron, Opelousas, Golden Meadow and Baker.

Now that the Baton Rouge office is fully operational, the mobile bus has been sent to Baker and is currently servicing customers for renewals of driver licenses/ID cards and vehicle registration.

"Office of Motor Vehicles personnel have worked diligently to restore operations in the hurricane affected areas," said Kay Hodges,

Commissioner for the Office of Motor Vehicles. "We continue to work towards our goal of restoring service for all of our customers."

For more information, contact 1-877-DMV-LINE (1-877-368-5463) or go to: http://omv.dps.state.la.us



STORAGE DEPOT
 — Climate Controlled —
TWO (2) LOCATIONS IN IOWA
 • 4 Sizes Available •
Ike Special!!
4th Month FREE!
 Open Monday - Friday -- 8 a.m. - 4 p.m.
337-582-3030

Attention Brides!
 Why Drive? We'll Come To You For Wedding Invitations!!!
 Personalized Service In Your Home, Offering The Perfect Wedding & Social Stationery by...
 Tru, Carlson Craft And Birchcraft
 WEEKEND AND EVENING APPOINTMENTS AVAILABLE!!
Wise Ideas
 Call: (337) 912-5063
 Ask About FREE Napkins Offer!!
 Jeffra DeViney Sales Consultant

JOHNSON BAYOU SCHOOL
 The architects and engineers could not access Johnson Bayou School even by boat yesterday, but hope to access by airboat today. On-site reports include extensive water damage and some structural issues.

SOUTH CAMERON HIGH SCHOOL
 South Cameron High School will be assessed on Wednesday, if high water transportation is available. On-site reports include extensive water and structural damage.

The Louisiana Public Assistance Temporary Facilities Group has a meeting scheduled with Superintendent Rodrigue and Project Manager James Hoffpauir at 10:30 a.m. Tuesday morning to expedite temporary buildings for the classrooms of Johnson Bayou and South Cameron High Schools. In the meantime, plans are in place for short-term alternate sites.

Projected post-storm needs for schools were requested through resources of the Louisiana Department of Education, so meeting those needs should be expedited, as well.

The contractor for the new elevated South Cameron High School was at the site on Monday, preparing to bring in equipment as soon as the highway is opened. Construction on the

State-of-the-art radiology at less cost to you
 Our multi-modality center provides:
 • 64-Slice High Resolution CT Scan
 • High Definition High Field MRI
 • MRA/CTA
 • Color Duplex Ultrasound
 • Breast MRI
 • Bone Density
 • X-Ray
 • Digital Mammography
 250 S. Beglis Parkway, Suite 2 Sulphur, LA 70633
337-310-8834
 Fax 337-310-8864
 www.physiciansimagingllc.com

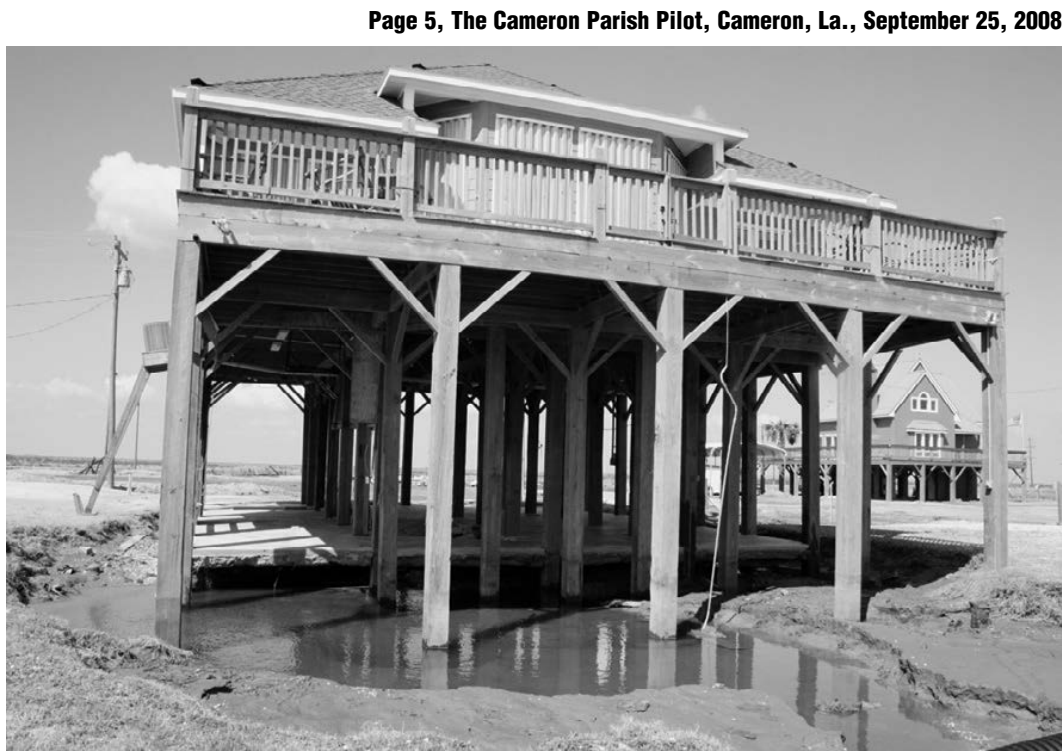
LOUISIANA LAND AUCTION
3,960± Acres in 33 Tracts
 Calcasieu & Allen Parishes - Near Kinder, LA
 Tuesday, October 7 • 4pm
 At the Kinder Community Center, Kinder, LA
 Timberland • Farmland • Pastureland
 Recreational • Residential • Commercial
 Westchester Auctions LLC
 THE LAND MARKETING AUTHORITY
 AB-309-08
 Auctioneer: Rex Schrader #1611
 800-607-6888 • 217-352-6000 • www.westchester-auctions.com

Southwest Homes
 In Lake Charles, La.
Is Your Local Modular Home Builder
 • Did you know that our Modular homes are built STRONGER than the Cameron Parish Building Code? Our wind load is in excess of 140 mph!
 • Did you know that the permitting process for a Modular Home is EASY!
 • Turn-Key construction available! We can do everything
 • We can assist you in Financing!
 • We have Foundation Specialists to assist you with Engineering available upon request.
 LET SOUTHWEST HOMES TAKE THE HASSLE OUT OF BUYING A NEW HOME
LET'S KEEP CAMERON PARISH GROWING STRONG!!
 Call Today For More Information!
 500 S. M. L. King Hwy . • Lake Charles, LA
337-436-5593 or 1-800-256-8006

Dear Local Merchant,
Number 7 Reason why you should increase your advertising. . .
 7. Remember how long it took you to get started? Once you build up a business, you can keep it going with a moderate, consistent advertising program But if you cut your advertising and lose your hold on the public, you'll find it's much harder to build it up again. It's sort of like starting all over.
 Call Jeffra DeViney, Advertising Sales Representative today to discuss your advertising . . .
786-8004 or 1-800-256-7323.
The Cameron Pilot
 203 Harrison St. • P. O. Box 995 • DeQuincy, La. 70633



EVEN THE GATORS have been affected by the hurricane. This one was too sick to move off the road. (Photo by Paul Sellers.)



FOUNDATIONS were scoured from under some homes along the beachfront. (Photo by Cyndi Sellers.)

Cameron Outdoors

By LOSTON MCEVERS



DUCK COUNT

Folks in Cameron Parish still have destruction on their minds for two hurricanes back to back. However, life goes on and many anglers are taking advantage of the large number of Redfish that are in our back yards, so to say. Many Redfish in our marshes washed ashore from Rita, there's way more now, as waters came further to the north.

Teal hunters say we still have a good number of Blue Winged Teal in our marshes, a season that will end this weekend. Still lots of us are still trying to get to assess our damage or trying to salvage what we can, as high waters from Ike have been slow to go down. Archery season for deer in Area 3 opened Sept. 20, but again, no word on any results.

This past Monday was our first official day of autumn, hopefully we'll get some cold fronts come down, high pressures and keep hurricanes away from our coast. Again what results we'll see on our hunting and fishing activities, is still yet to be seen.

The Louisiana Department of Wildlife & Fisheries (LDWF), has released the waterfowl population estimate (duck count) in our Louisiana coastal zone, below Highway 90 and on Catahoula Lakes, taken Sept. 8-10, made from air by aircraft.

The southwest count was mallards, less than 1000, mottled ducks (summer mallards which are raised in our marshes) 28,000; Blue-winged teal 444,000, shovelers (spoonbill) 1000 for a total count of dabbling ducks at 473,000. No divers ducks on count and no count on Gadwall (grey ducks), wigeon, green-winged teals, and pintails and coots (pool-dog).

The blue-winged teal count was much higher than in 2007 (249,000) higher than the 5-year average and also long term average 252,000. Over 90% of the blue-winged teals were north of the marsh in the agricultural areas. From Morgan City east of saltwater had taken its toll including Catahoula Lake, which was 10 feet above pre-season levels, now our southwest marshes are experiencing the same. Saltwater is scalding our marsh vegetation.

CAMERON DU BANQUET

The Ducks Unlimited Cameron Banquet was cancelled because of Hurricane Ike at Grand Lake Community Building. However after Ike, the space wasn't available, as it was needed for storm victims.

Any information readers would like to pass on, please call me at 249-1124 and I'll let our readers know what's happening. Good luck to all!

Disaster deadline extended

The deadline has been extended to Sept. 30 for farmers who need waivers from the Farm Service Agency (FSA) to qualify for federal disaster insurance to help cover their losses from hurricanes Gustav and Ike.

"The deadline had been Sept. 16, but because some of the FSA offices were without power because of the hurricanes, the deadline was extended a couple of weeks," said Dr. Kurt Guidry, LSU AgCenter agricultural economist.

Having crop insurance is a requirement for eligibility for federal disaster assistance according to the 2008 Farm Bill, Guidry said. Unfortunately, by the time the Farm Bill was finally passed, the deadline to purchase crop insurance had already passed for many commodities leaving some producers without the insurance coverage required for the disaster programs. To compensate, the FSA has set up this system of waivers.

"Things are still confus-

ing because the new farm bill was just recently passed," Guidry said. "Many of the rules and regulations about how these disaster programs will be implemented are still in various stages of development. If farmers have any questions, they need to contact their local FSA office."

The waiver extension applies in all but nine Louisiana parishes - Bienville, Bossier, Caddo, Claiborne, DeSoto, Red River, St. Tammany,

Washington and Webster. The waiver fee is \$100 per crop but no more than \$300 per producer per parish, Guidry said.

"There's a cap of \$900 for producers who farm more than one crop in more than one parish," Guidry said.

Because of the many complications with the new farm bill and disaster assistance, Guidry urges producers to call the local FSA office with questions.

CJ Tech Services, LLC.

ELECTRICAL CONTRACTORS

- For all your electrical needs
- Residential — Commercial
- We are here to HELP!

Office: (337) 474-3117

Charles Abshire: (337) 249-6666

AJ Abshire: (337) 802-5697

L.A. State License Electrical Contractor
Lake Charles, LA

Attention Brides!

Why Drive? We'll Come To You For Wedding Invitations!!!

Personalized Service In Your Home, Offering The Perfect Wedding & Social Stationery by...
Tru, Carlson Craft And Birchcraft

WEEKEND AND EVENING APPOINTMENTS AVAILABLE!!

Wise Ideas

Call: (337) 912-5063



Jeffra DeViney
Sales Consultant

Ask About FREE Napkins Offer!!

Statement of Ownership, Management, and Circulation		
UNITED STATES POSTAL SERVICE (All Periodicals Publications Except Requester Publications)		
1. Publication Title The Cameron Parish Pilot	2. Publication Number 086-980	3. Filing Date Sept. 25, 2008
4. Issue Frequency Weekly	5. Number of Issues Published Annually 52	6. Annual Subscription Price \$ 23.00
7. Complete Mailing Address of Known Office of Publication (Not printer) (Street, city, county, state, and ZIP+4®)		Country USA
128 School St., Cameron, La. 70631		Telephone (include area code) 1-800-256-7323
8. Complete Mailing Address of Headquarters or General Business Office of Publisher (Not printer)		
P.O. Box 995, DeQuincy, LA 70633 203 E Harrison St., DeQuincy, LA 70633		
9. Full Names and Complete Mailing Addresses of Publisher, Editor, and Managing Editor (Do not leave blank)		
Publisher (Name and complete mailing address): Jerry and Joy Wise, P.O. Box 995, DeQuincy, LA 70633		
Editor (Name and complete mailing address): Jerry Wise, P.O. Box 995, DeQuincy, LA 70633		
Managing Editor (Name and complete mailing address): NONE		
10. Owner (Do not leave blank. If the publication is owned by a corporation, give the name and address of the corporation immediately followed by the names and addresses of all stockholders owning or holding 1 percent or more of the total amount of stock. If not owned by a corporation, give the names and addresses of the individual owners. If owned by a partnership or other unincorporated firm, give its name and address as well as those of each individual owner. If the publication is published by a nonprofit organization, give its name and address.)		
Full Name	Complete Mailing Address	
Wise Newspapers, Inc.	P.O. Box 995, DeQuincy, LA 70633	
Jerry Wise	P.O. Box 995, DeQuincy, LA 70633	
Joy Wise	P.O. Box 995, DeQuincy, LA 70633	
11. Known Bondholders, Mortgagees, and Other Security Holders Owning or Holding 1 Percent or More of Total Amount of Bonds, Mortgages, or Other Securities. If none, check box <input checked="" type="checkbox"/> None		
Full Name	Complete Mailing Address	
12. Tax Status (For completion by nonprofit organizations authorized to mail at nonprofit rates) (Check one)		
<input type="checkbox"/> The purpose, function, and nonprofit status of this organization and the exempt status for federal income tax purposes:		
<input checked="" type="checkbox"/> Has Not Changed During Preceding 12 Months		
<input type="checkbox"/> Has Changed During Preceding 12 Months (Publisher must submit explanation of change with this statement)		

13. Publication Title The Cameron Parish Pilot	14. Issue Date for Circulation Data Below September 25, 2008	
15. Extent and Nature of Circulation	Average No. Copies Each Issue During Preceding 12 Months	No. Copies of Single Issue Published Nearest to Filing Date
a. Total Number of Copies (Net press run)	3000	3000
b. Paid Circulation (By Mail and Outside the Mail)		
(1) Mailed Outside-County Paid Subscriptions Stated on PS Form 3541 (Include paid distribution above normal rate, advertiser's proof copies, and exchange copies)	1200	1011
(2) Mailed In-County Paid Subscriptions Stated on PS Form 3541 (Include paid distribution above normal rate, advertiser's proof copies, and exchange copies)	403	1024
(3) Paid Distribution Outside the Mail (Including Sales Through Dealers and Carriers, Street Vendors, Counter Sales, and Other Paid Distribution Outside USPS®)	880	400
(4) Paid Distribution by Other Classes of Mail Through the USPS (e.g. First-Class Mail®)	-0-	-0-
c. Total Paid Distribution (Sum of 15b (1), (2), (3), and (4))	2483	2435
d. Free or Nominal Rate Outside-County Copies included on PS Form 3541	15	9
e. Free or Nominal Rate In-County Copies Included on PS Form 3541	3	4
f. Free or Nominal Rate Copies Mailed at Other Classes Through the USPS (e.g. First-Class Mail®)	-0-	-0-
g. Free or Nominal Rate Distribution Outside the Mail (Carriers or other means)	-0-	-0-
h. Total Free or Nominal Rate Distribution (Sum of 15d (1), (2), (3), and (4))	18	13
i. Total Distribution (Sum of 15c and 15h)	2501	2448
j. Copies not Distributed (See instructions to Publishers #4 (page #3))	499	552
k. Total (Sum of 15i and j)	3000	3000
l. Percent Paid (15c divided by 15i times 100)	99%	99%
16. Publication of Statement of Ownership		
<input checked="" type="checkbox"/> If the publication is a general publication, publication of this statement is required. Will be printed in the September 25, 2008 issue of this publication.		
<input type="checkbox"/> Publication not required.		
17. Signature and Title of Editor, Publisher, Business Manager, or Owner		
<i>Jerry Wise</i>		September 24, 2008

CAMERON PARISH

WE WANT THE COMMUNITY TO KNOW...

we're here, we're working, we're ready!

To all of our Business and Residential customers—**CABLE TV, HIGH-SPEED INTERNET, and PHONE** service is available to Cameron Parish today.

Call today—we're here, working and ready to serve you!

Cameron Communications
Get connected.

1 800 737-3900 www.camtel.com

Be careful who you hire to make storm repairs

The damage caused by a natural disaster often brings out the best in people, as strangers reach out to help others in need. Unfortunately, according to BBB President, Carmen Million, the aftermath of a crisis also brings out those who take advantage of people who have already been victimized.

Million warns consumers, "Be patient, don't make quick decisions without doing your homework." Some of the most common "after-disaster" scams involve home repairs, clean-up efforts, heating and cooling equipment, and flood damaged cars.

The BBB offers the following advice for consumers:

1. Check with your insurance company about your coverage and their specific filing requirements.
2. Although anxious to get things back to normal, avoid acting in haste. Don't be pressured into signing a long-term contract. Make temporary repairs if necessary.
3. For major repairs, shop around for contractors, get competitive bids, and check references.
4. Be wary of door-to-door workers. Check with your city or parish to find out about door to door rules and company licensing.
5. If possible, get more than one bid - bids should be in writing and should detail the work to be done, the materials to be used, and the price breakdown for labor and materials.
6. Review any written agreement carefully before signing and keep a copy.
7. Never pay in full until all supplies & subcontractors are paid eliminating a possible lien on your property.
8. For additional information or to check a company's record, call the Better Business Bureau at 478-6253 or 1-800-542-7085.

Les Cadiens du Teche Cajun Music Festival
New Iberia, LA
September 20
Call (337) 364-4030

This is your Louisiana.

LOUISIANA
OFFICE OF THE LI GOVERNOR
Department of Culture, Recreation & Tourism

© 2008 The Louisiana Department of Culture, Recreation & Tourism

LOUISIANA NATIONAL GUARD
Your COUNTRY, Your STATE, Your GUARD!
Louisiana Proud

\$ 20,000 Enlistment Bonus

\$15,000 Prior Service Bonus

100% Tuition Exemption

Student Loan Repayment Program

1-800-GO GUARD

1st Annual Roastin' with Rosie Barbeque Festival

September 19-20, 2008 Jennings, LA

- Barbeque Competition & Wine Tasting
- Kid's World • Food Vendors
- Great Bands under HUGE Pavillion
- FREE Parking & Shuttle
- No Mud! All events on concrete



For more info contact
Jeff Davis Parish Tourist Commission
(337) 821-5534 www.jeffdavis.org

It was déjà vu for Jurors reviewing storm report

By **CYNDI SELLERS**

It was like déjà vu as the Cameron Parish Police Jury held a special meeting Tuesday afternoon at the Cameron Prairie National Wildlife Refuge headquarters. The refuge is once again serving as headquarters for Cameron Parish recovery operations, since all parish offices in Cameron were damaged by Hurricane Ike's flood waters.

"Lower Cameron Parish is severely damaged," reported Clifton Hebert, Parish OEP Director. "It is not safe to stay in the lower part of the parish, Hackberry, or Big Lake. Johnson Bayou is cut off by water and debris on the roads, and Highway 82 is damaged."

Hebert said he knew that some people were planning to stay in the Hackberry and Big Lake areas, but he said it was not a good idea. Power is out, water is an issue in Big Lake, and sewer systems will soon begin to back up. Medical services are limited, especially in Big Lake because the bridge will only be open two hours a day.

For medical emergencies in Big Lake, a boat will be available for transportation to the east side, where an ambulance will be stationed.

In Hackberry, ambulances have begun driving through the salt water to provide services. Hebert said these vehicles cost hundreds of thousands of dollars and will be damaged by the salt. There is no fire protection in either community at this time. Security at Big Lake is being provided by two Cameron and two Calcasieu law enforcement officers.

Cameron Parish deputies are now patrolling Hackberry. There have been reports of looting taking place during the time the community was cut off by high water.

Grand Lake/Sweetlake "fared well, somewhat" and the evacuation order was lifted on Tuesday, but some secondary roads are still inundated, Hebert said. He felt that people whose homes were flooded needed to get back and clean out freezers, air out, etc.

In lower Cameron Parish the report was much worse. The Hackberry to Holly Beach road was under water and several power poles were down on the road. Highway 82 from Cameron to Johnson Bayou is severely damaged, and the Cameron Ferry is out of service.

The causeway from Johnson Bayou to Texas is covered with debris and the Texas Department of Transportation must assess it for safety, but Hebert hopes it will be opened for local traffic soon.

In Cameron and Creole, residents were allowed to look and leave beginning Tuesday, but many roads were still under water. Hebert reminded everyone that the water is salty and will damage vehicles, but he said it was a personal decision. Water levels have fluctuated each day with high tides, and are falling slowly.

Look and see lasts until 5 p.m., with no one allowed back into the area after 3 p.m. There is a curfew from 8 p.m. to 6 a.m.

Grand Chenier residents must travel through Vermilion Parish, as the water is high near the Mermentau River, with possible road damage to the approaches to the bridge.

A full assessment is due to begin soon, with FEMA teams arriving on Wednesday. The teams will be determining the amount of damage and the amount of

debris to be cleaned up. It will be up to the Police Jury to decide how it will be removed.

Jurors took only two official actions. They passed a resolution asking the Corps of Engineers to keep the locks open to full drainage position until the flood waters have receded, and they passed a motion to require all mobile homes returning to Cameron Parish to be elevated - no exceptions.

Plans are being made to move parish offices into the South Cameron Memorial Hospital, where there is an unused wing of rooms available, until the replacement offices arrive.

Registrar of Voters Suzanne Sturlese asked for immediate housing for her office, due to the presidential election in just six weeks. The jury will consider her request on Friday at another special meeting to be held at 9 a.m. at the refuge.

OTHER NEWS IN BRIEF

Sheriff Theos Duhon reports that 911 is operating through the Calcasieu 911 office. Calls are being relayed to Cameron SO.

The state fire marshal is sending a \$500,000 command center to Hackberry to be used by the west side emergency services.

Gas and electrical workers are in the parish making repairs and securing lines.

Caskets have again floated out of cemeteries, and the coroners' office is already tagging and preparing to collect them.

National Guard engineering teams have been pumping out the basement of the Court House, and generators are on the way to make the building operational.

The Guard has moved to the parish administrative area near the court house to clean up in preparation for replacement offices.

A large number of oil and gas leaks have been detected throughout lower Cameron Parish, with visible gas flows and many oil sheen areas. Hazardous materials teams are working to identify and secure these.

Jeff Davis Electric reports that if a house had flooding and the meter box went under water, a certified electrician will have to inspect the service before power can be restored.

Unlike Hurricane Rita, most electrical poles in the parish survived the storm. Mike Heinen of Jeff Davis expects power to be restored much quicker than before.

Johnson Bayou industries were hit much harder than last time. Some pipelines were exposed and some offshore platforms lost.

FEDERAL RESPONSE

Representatives of FEMA and other agencies will meet with the Police Jury on Friday at 9 a.m. to discuss rule changes since Hurricane Rita and current options available.

The Small Business Administration has offered to defer payment for those who have SBA loans. The phone number is 1-800-659-2955.

Grand Lake folks find refuge from Ike on Texas lake

By **MARLENE J. BOHR**
(Dangerfield, Tex. Bee)

A search for refuge from Hurricane Gustav ended on Lone Star Lake in East Texas for 18 people from Grand Lake. Becoming more concerned as the hurricane approached the Gulf, Renella Dockins and her family began searching online last Wednesday and found a Web site for the Starlight House in Jenkins.

"When we saw the ad online, we saw the house was really nice," Mrs. Dockins said. "We chose here because it had a lake, and we have a bunch of children who love fishing. We contacted Kelsie from the Web site and she agreed to keep it booked for us from Wednesday."

We called back Friday and told her we were on our way as Gustav was entering the Gulf. "We left Saturday morning at 1:30 to try to beat the traffic. We didn't run into a problem and arrived here in Jenkins about 10:30 a.m."

When we evacuated for Hurricane Rita, we had to wait in line 12 hours to just get 10 miles down the interstate." Escaping from hurricanes is not new to Mrs. Dockins or her family. "We were with my mom and dad when we all evacuated from Rita to Hot Springs," she said. "We lived 50 miles away from Grand Lake at that time."

"When we looked for a place to stay this time, we needed somewhere for a long time in case we were devastated again. We had to stay in Arkansas almost two

weeks before we could go back. The kids are outdoor kids. They like fishing at the pier at Starlight House."

Mrs. Dockins said after Rita, she had 20 people living in a house trailer with her. "My mom and sister had to live with me as they lost everything to Rita," she said. The family fared much better with Gustav as they received word that their property was intact.

"We just had wind and rain," Mrs. Dockins said. "My uncle called us as he stayed. He is a deputy sheriff." The families went home Wednesday after the evacuation was lifted.

Mrs. Dockins and her husband Jimmy have three children, Jerica, 17, Jacob, 13, and Jaycee, 7. Her mom and dad are Roy and Patricia Boudreaux. Also taking refuge at Starlight House after Gustav are Alice and Rusty Benson, with their children, Kinlee, 11, and Brailyn, 7; Jason and Kristy Smith with Jaylon, 10; and Amanda and Donald Trahan with their children, Hayley, 12, and Raven, 16.

Give the Gift With a Future

Creating a New Century of Savings **U.S. SAVINGS BONDS**

For complete information about U.S. Savings Bonds, visit our Web site at www.savingsbonds.gov.

A public service of this newspaper

THE LARGEST RV SHOW & SALE IN LOUISIANA!

- ★ Motorhomes
- ★ RV Rentals
- ★ Travel Trailers
- ★ Campground Info
- ★ Fifth Wheelers
- ★ Truck Campers
- ★ Toy Haulers
- ★ RV Accessories
- ★ Pop-Up Campers
- ★ RV Financing
- ★ Turbochargers
- ★ RV Satellites

Over 100 Brands on Display in 1 Location!
See What's New for 2009!
Fri 12-7 • Sat 10-7 • Sun 11-5
Adults \$7 • Under 16 Free
www.bacshows.com

Louisiana Fall RV & Camping Show
October 3-4-5 • Lamar Dixon Expo Center
I-10 Exit 177 • 15 minutes East of Baton Rouge

BOOTS & COOTS

JOIN THE ELITE

Begin your career in the Oilfield Industry

Boots and Coots, the world's premiere oilfield services and pressure control authority, has immediate openings for **ENTRY LEVEL positions** in our hydraulic workover/snubbing division located in Houma, Louisiana.

No prior experience required for entry level. Paid training & full benefits.

Apply online at www.boots-coots.com or call **1-800-BLOWOUT**

Happy Ads ARE HERE AGAIN!!

Price Includes Photo and Art-Work.

Mail your request along with photo and payment by 4 p.m. Monday to P. O. Box 995, DeQuincy, La. 70633. Ads must be signed.

• Birthday
• Anniversary
• Promotion
• League
• Championship
• Graduation
• New Baby
• Bon Voyage
• Good Luck
• Engagement
• Wedding
• New Home

Place A Happy Ad For As Little As **\$24.50**

Congratulations! You've found a terrific way to send your best wishes to someone special for any occasion!

The Cameron Pilot
Call or come by now and make someone's day!
786-8004 or Toll Free: 1-800-256-7323

ALLSTAR Jack Hebert's BUICK Pontiac GMC Truck, Inc. We Challenge All Deals

Visit us at our website www.allstarpontiacgmctruck.com
e-mail: allstar@allstarpontiac.net
Hwy. 90, Sulphur 527-6391
1-877-288-3314

2008 PONTIAC G-5 14-09. Automatic, OnStar & More. Gas Saver 30 mpg. **\$16,551.63** MSRP \$28,990. Includes \$1750 Rebate. Excludes TT&L.

2008 YUKON T660-08. Automatic, OnStar, SLE Decor and More. **\$27,297** MSRP \$36,245. Includes \$8000 Rebate. Excludes TT&L.

GM EMPLOYEE PRICING AND HUGE GM REBATES ON ALL '08s & SELECTED '09 MODELS OPEN TILL 7PM

2008 BUICK LUCERNE CX B4-08. 6 passenger, automatic start, rear parking & more. **\$24,297** MSRP \$28,990. Includes \$1750 Rebate. Excludes TT&L.

2008 SIERRA CREW CAB T747-08. Cruise, OnStar, Automatic, Air & More. **\$20,497** MSRP \$28,880. Includes \$8000 Rebate. Excludes TT&L.

WOW! TRUCKS, TRUCKS, TRUCKS! DON'T MISS THIS! LOOK!

2005 GMC 1 Ton Duramax Crew Cab Diesel	2007 Cadillac CTS
Dually, 4x4, leather, auto, A/C, AM/FM CD	Under 20,000 miles, auto, A/C, AM/FM CD, fully loaded
\$25,997	\$20,997
2008 GMC Yukon	2005 Ford Mustang Convertible
Auto, A/C, AM/FM CD, low miles, factory warranty, fully loaded	Black in color, auto, A/C, AM/FM CD, only 25,000 miles
\$26,997	\$16,997
2007 GMC Acadia	2008 Pontiac G-6
Auto, A/C, AM/FM CD, DVD, power windows, locks, lots of extras	V6, auto, A/C, AM/FM CD, tilt, cruise, APR as low as 2.9
\$24,997	\$15,997
2008 GMC C1500 Cargo Van	2008 Chevrolet Malibu
Auto, A/C, AM/FM CD, tilt, white in color	Auto, A/C, power windows, locks, tilt, cruise, fully loaded
\$21,997	\$13,997
2007 Chevrolet 3/4 Ton 4x4 Excab	2005 GMC Sierra Crew Cab
Factory warranty, auto, A/C, AM/FM CD	Sik, #809A, auto, A/C, AM/FM CD, fully loaded
\$19,997	\$12,997
2005 Chevrolet Tahoe	2004 GMC Sierra Excab
Only 39,000 miles, auto, A/C, leather, all loaded up	Sik, #52408A, auto, A/C, AM/FM CD, tilt, cruise, fully loaded
\$18,997	\$10,997
2006 GMC Z71 C1500 Crew Cab	2005 Nissan Altima
White in color, auto, A/C, AM/FM CD, fully loaded	Auto, A/C, AM/FM CD, tilt, cruise, power windows, locks
\$18,997	\$12,997
2006 Honda Accord	2001 Chevrolet Tahoe
Auto, A/C, AM/FM CD, tilt, cruise, low miles	White, auto, SLT Package, A/C, AM/FM CD, leather fully loaded
\$18,997	\$11,997

Slow Credit? Bankruptcy? Repo? Need help with Financing? A new or used vehicle - special financing rates call Diana at 527-6391 Ext. 58

GRETTA Heritage Festival Louisiana

October 3rd, 4th, and 5th, 2008

Admission: \$10.00 daily - \$25.00 weekend passes are available
CHILDREN UNDER 12 GET IN FREE!

With nationally known music acts, crafts, rides and games, a German Beer Garden, Italian Village with St. Joseph's altar, and a full-fledged food court, it's no wonder locals look forward to this spectacular event every year.

Enjoy performers such as: Montgomery Gentry, KC & the Sunshine Band, Blue Oyster Cult and many, many more during this three-day extravaganza!

Visit www.grettafest.com for exact location and performance schedules. Enjoy a free ride across the mighty Mississippi River on the pedestrian ferry that departs from Canal Street at the river and takes you to the festival grounds.

Free parking with shuttle service is available at the Westside Shopping Center. Bring the family and join us for a weekend of fun, food and spectacular music!

Go to www.grettafest.com for more information.

JEFFERSON
www.experiencejefferson.com

Classifieds

REAL ESTATE

CENTURY21 BESSETTE Realty, Inc., Office: 337-474-2185, Grace Robideaux, Realtor: 496-1611

•NEW! 1299 Hwy 384 Immaculate 2 yr old 3/2.5 beautiful custom home in Grand Lake on .75 acre. Split floor plan w/9 & 10' ceilings. Study plus gameroom w/over 2800 living. \$230,000.

•NEW! 104 Elaine Lane Salt water pool & outdoor kitchen complete this 4 yr old Grand Lake beauty. 3/2 plus study w/over 1800 living. Granite counter tops recently installed. 24 X 24 shop. \$239,900.

•HEBERT CAMP Road lots: Tract 3&4 \$25,500, Tract 1 \$22,500

•10962 HWY 384: 3/2 Modular home w/additions on 17.5 + acres. Owner will look at all offers \$275,000

•229 McCAIN: Acadian 4/2 in Grand Lake in restricted subdivision w/large upstairs game room \$219,000. 2/13tfc.

•20 ACRES of wooded timberland for sale north of DeQuincy, Beauregard Parish. Please contact Darlene Nortman with Coldwell Banker Elite at (337) 274-2466 or (337) 463-2004 for more information.

HIGH & DRY Mini-ranches for sale in Beauregard Parish. Great location for your home. Owner finance. No credit check required. 7.34 acres in Singer. Only \$400 down. Also 9.4 acres in Bundicks. Only \$600 down. Call (337) 658-0431. 9/17 & 9/24p.

REAL ESTATE

FOR SALE: 32X80 Cavalier doublewide, Zone 3, 4/3 large master bedroom, master bath, large closets, island kitchen, fireplace, extra cabinets added. Call (337) 802-6657 or (337) 622-3133. 9/17 - 10/5p.

FOR SALE

METAL OUTLET Metal Roofing ~ Carports ~ Metal Buildings ~ Patio Cover Kits ~ C's & Z's ~ Custom Trim ~ RV & Equipment Covers ~ Metal Doors ~ Windows. 337-625-2778. 2241 E. Napoleon, Sulphur. Open Mon.-Fri. 7 am-5 pm, Sat. 7 am-12 noon. ttc.

ATTRACT ATTENTION: Need promotional items for trade shows, festivals, fairs, school events, etc. Call us, we can help! Rely on Wise Ideas Printing & Promotions to help you develop a customized program for your next event. Check out our website: www.bestwiseideas.com. Call Jeffra Wise DeViney for competitive quotes & sales catalogs. Phone: 912-5063.

FEMA plays important role here

FEMA coordinates the federal government's role in preparing for, preventing, mitigating the effects of, responding to, and recovering from all domestic disasters, whether natural or man-made, including acts of terror.

SBA is the federal government's primary source of money for the long-term rebuilding of disaster-damaged private property. SBA helps homeowners, renters, businesses of all sizes, and private non-profit organizations fund repairs or rebuilding efforts, and cover the cost of replacing lost or disaster-damaged personal property.

These disaster loans cover uninsured and uncompensated losses and do not duplicate benefits of other agencies or organizations. For information about SBA programs, applicants may call 800-659-2955 (TTY 800-877-8339).

THINK OF IT AS AN OWNER'S MANUAL FOR YOUR MONEY.



The free *Consumer Action Handbook*. It's in print and online at ConsumerAction.gov. Order your free copy online at ConsumerAction.gov or write to Handbook, Pueblo, CO 81009.

Wildlife Dept. rescues are told in Hurricane Ike

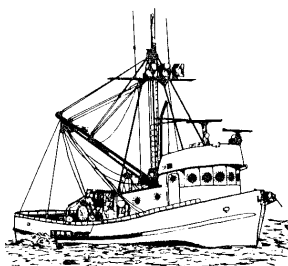
Search and rescue (SAR) mission reports filed by the Louisiana Department of Wildlife and Fisheries (LDWF) since Sunday have added six more residents from Terrebonne Parish and one from Cameron Parish to waterborne rescue numbers following Hurricane Ike.

As waters receded within parishes affected by Ike's heavy rains and tidal surge, SAR activities coordinated by LDWF focused Monday on southern Calcasieu, Cameron and Vermilion parishes and in the Lafitte area within Jefferson Parish. Secondary searches with federal Urban Search and Rescue (USAR) teams in Calcasieu, Cameron and Terrebonne parishes were also in their final stages.

With the seven additional rescues since 5 p.m. Sunday, SAR units working with LDWF have transported 362 residents to safety since Sept. 12.

Coordinated SAR operations, at the state level, will conclude today. LDWF Enforcement Division agents will return to their regional offices and assist local law enforcement as needed with post-hurricane patrols and any additional SAR.

LDWF agents were supplemented in waterborne SAR operations by the resources of the Virginia Department of Game and Inland Fisheries, the Louisiana National Guard (LANG) and federal USAR teams. LANG and U.S. Coast Guard flight crews supported the state SAR mission with daily aerial reconnaissance and rescue mission assistance.



EMERGENCY DECLARATION ISSUED FOR CAMERON PARISH SCHOOL BOARD

This is official notification that the Cameron Parish School Board has declared an emergency situation as a result of Hurricane Ike.

Repairs, services, equipment and supplies needed to address emergencies as a result of Hurricane Ike will be procured under this emergency declaration.

This emergency declaration has been determined to be in the best interest of Cameron Parish School Board by Superintendent Stephanie Rodrigue and Board President Dwayne Sanner, effective September 17, 2008.

Pursuant to LA. R.S. 38:2212(D) (1)

(RUN: Sept. 19 S-22)

Fishery resource disaster declared for the Gulf

U. S. Commerce Secretary M. Carlos Gutierrez announced a formal determination of a fishery resource disaster in the Gulf of Mexico, due to the devastation following Hurricanes Gustav and Ike.

"The economic impacts of Hurricanes Gustav and Ike on fishing communities in the Gulf of Mexico will hurt these communities," Gutierrez said. "We have a lot of work to do, but this disaster determination is an important step in the recovery process."

The fishery resource disaster determination was made pursuant to provisions of the Interjurisdictional Fisheries Act that authorize assistance to fishermen affected by natural disasters. This action also makes small fishing businesses eligible for certain Small Business Administration loans.

NOAA's Fisheries Service

will work with the states to distribute any funds appropriated in response to this determination.

Commercial fishing in the affected areas consists mostly of finfish, shrimp and oysters. NOAA will work with the states to further assess damage to the major fishing ports and the seafood processing facilities in Louisiana and Texas.

"Working with the states, NOAA will continue efforts to assess fishing industry damage and long-term impacts to the marine environment," said Jim Balsiger, director of NOAA's Fisheries Service.

The initial affected areas under today's declaration are Texas and Louisiana. DOC/NOAA will continue to work with the region to assess the impacts of the storm in other areas of the Gulf.

LOUISIANA LAND AUCTION

3,960± Acres in 33 Tracts

Calcasieu & Allen Parishes - Near Kinder, LA

Tuesday, October 7 • 4pm

At the Kinder Community Center, Kinder, LA

Timberland • Farmland • Pastureland
Recreational • Residential • Commercial



Westchester Auctions LLC
THE LAND MARKETING AUTHORITY
AB-309-08

POWERED BY
SCHRADER
AB273-08
Auctioneer: Rex Schrader #1611

800-607-6888 • 217-352-6000 • www.westchester-auctions.com

Give the Gift With a Future

Creating a New Century of Savings
U.S. SAVINGS BONDS
For complete information about U.S. Savings Bonds, visit our Web site at www.savingsbonds.gov.

ATTENTION HORSEMEN!

GIANT SADDLE & TACK AUCTION

Thurs., Sept. 25 - 7:30 p.m.
VFW Post 2130
1900 Country Club Dr.
Lake Charles, LA

Huge discounts on quality name brand saddles & tack! We'll treat you right and save you big bucks! Over 100 saddles by: Billy Cook, Rico, Heart-O-Texas, Longhorn, Circle T and more! 1,000s of tack items, work and show gear, decorative items and much more! *Bring your used saddles for trade-in credit.

Auctioneer: Rex Laysone
LA # 1549 - AB 248

WESTERN SUPPLIERS
P. O. Box 428, Aubrey, TX
1-800-656-3133
www.westernsuppliers.com



Mary Ann W.

Go Painlessly



Compare and Save!

Buy THERA-GESIC®



Tom W.

NOTICE

Early voting for the Oct. 4, 2008 election will be at the Registrar of Voters office at 122-F Recreation Ln. behind the courthouse. This election is for Constable in Ward 6 and Justice of Peace and Constable in Ward 3.

Early voting has added another Saturday to the early voting days for the convenience of our voters and extends the daily hours during early voting from 8:30 a.m. to 6:00 p.m.

Early voting will occur from 8:30 a.m. to 6:00 p.m. starting Saturday, Sept. 20, 2008 and the week of Monday, Sept. 22 through Saturday Sept. 27, 2008. Please remember when you go vote, you must have a picture ID with you.

Finally, any person who feels they need assistance in voting due to a physical disability such as poor eyesight or other **MUST** get a physicians certificate confirming the need for assistance in voting and submit it to the registrar prior to the election or give the certificate to the commissioners at the polls on Election Day.

Thanks,

RUN: Sept. 11 & 19 (S-12) Suzanne Sturlese, Registrar

Plans and Information for Cameron Parish School Families

There is no need to enroll students in other schools. Once the parish is safely accessible and families have returned, openings will be announced. Plans are in place for alternate sites, where necessary. Students will be taught by their same teachers, graduations will be conducted on schedule, and student activities and athletics will quickly resume. Cameron Parish School Board members are in constant communication in these efforts.

As soon as Grand Lake, Sweetlake and Big Lake are opened and families return, school openings with some alternate sites will be announced. Each school will open as soon as plans for each school are complete, not necessarily all at the same time.

South Cameron students will not be housed at Grand Lake. Plans for an alternate site are in progress. Plans for Hackberry and Johnson Bayou will be announced as soon as we have a timeline from the restoration company.

Restoration needs will be assessed at Johnson Bayou and South Cameron High Schools today and tomorrow and will begin as quickly as the schools can be accessed.

Principals have been requested to communicate with coaches to adjust athletic practices and games and secure locations for alternate gyms. Information for Grand Lake, Hackberry and Johnson Bayou basketball plans and transportation will be announced as soon as all details are complete. There are no issues with Grand Lake's gym.

Grand Lake girls basketball practice is scheduled for Wednesday, 8:30 AM; Boys basketball - 10:00 AM until noon on Wednesday, Thursday and Friday, all at Grand Lake High School.

No games are scheduled at this time.

Hackberry High School athletes are asked to call coaches Terry Murphy at 513-3826 and Byron Gibbs at 540-2928.

Johnson Bayou athletes are asked to call coaches Darrell Lee at 304-6289, Todd Jinks at 794-6364 or Principal Gene Reynolds at 515-4910.

South Cameron High School will play football at Kinder High School on Saturday at 4:00 PM. Football practices are scheduled at Kinder High School on Thursday and Friday at 8:00 AM. Bus transportation to Kinder High School will be available. Bus pick-ups are as follows: 6:15 AM - Holmwood Grocery, Grand Lake Baseball Field, Salon Elegance; 6:25 - Chesson's Grocery, Burton Coliseum southwest corner; 6:30 - St. Patrick's Church 6:35 - Fuel Stop 36; 6:35 - Wal-Mart, Nelson Road; 6:45 - VF Factory Outlet. Athletes are asked to bring uniforms and equipment. Cheerleaders and dance line will receive information from their sponsors.

Employees are asked to take care of their homes and handle personal issues, such as FEMA and insurance, while the schools are forced to remain closed, so that the focus will be on our students when they return.

Payroll will be handled through direct deposit on September 25, 2008. Check stubs will be mailed. All invoices and substitutes were paid before evacuation was called.

Architectural and engineering assessments have been completed at Grand Lake and Hackberry High Schools. Grand Lake has only humidity issues which have been addressed since Saturday night when Jeff Davis Electric restored electricity to that portion of Grand Lake. Hackberry had from 2 to 36 inches of water throughout the school with silt, mud and debris remaining. A restoration firm will be in the school as soon as Hackberry can be accessed in a vehicle. They will also be working at Johnson Bayou High School as soon as the assessment team can get in to direct them.

The architects and engineers could not access Johnson

Bayou School even by boat yesterday, but hope to access by airboat today. On-site reports include extensive water damage and some structural issues.

South Cameron High School will be assessed on Wednesday, if high water transportation is available. On-site reports include extensive water and structural damage.

The Louisiana Public Assistance Temporary Facilities Group has a meeting scheduled with Superintendent Rodrigue and Project Manager James Hoffpauir at 10:30 Tuesday morning to expedite temporary buildings for the classrooms of Johnson Bayou and South Cameron High Schools. In the meantime, plans are in place for short-term alternate sites.

Projected post-storm needs for schools were requested through resources of the Louisiana Department of Education, so meeting those needs should be expedited, as well.

The contractor for the new elevated South Cameron High School was at the site on Monday, preparing to bring in equipment as soon as the highway is opened. Construction on the concession and restrooms will continue at that time, as well.

The Cameron Parish School Board Central Office reopened on Sunday and has been made available to other parish offices, in addition to school board business. Any public officials needing office space should call 337.905.5784, extension 114 for Angie Styron or 109 for Anna Murphy. Central office employees will be called to work when needed and will be notified of any necessary new assignments or relocations.

Cameron Parish families and employees are encouraged to contact FEMA at www.fema.gov or by calling 1 (800) 621-3362. TTY users can dial 1 (800) 462-7585 to use the Federal Relay Service.

Information and registration for food stamps is available through www.dss.state.la.us or by calling 1-888-524-3578.

OEP Director Clifton Hebert is arranging for individual commodities assistance in both Grand Lake and Hackberry.

Mail for Cameron and Johnson Bayou (70631), Creole (70632) and Grand Chenier (70643) is now available at Drew Station on Lake Street on Lake Charles. Mail for Hackberry (70645) is available at the Sulphur Post Office. For more information, Cameron Parish School Board families and employees are asked to check the website at www.camsch.org and listen to My State alert messages. Videography and photography of Cameron Parish are continually being added to the website. Families are advised that the aerial shots appear far more promising than what is the reality on the ground for most of the homes, schools and buildings in Cameron Parish.

With Special Thanks to

Cameron Parish OEP Director Clifton Hebert and Staff
Sheriff Theos Duhon and his Department
Cameron Parish First Responders
Cameron Parish Administrator Tina Horn
Cameron Parish Police Jury
for protecting lives and personal items by calling an early evacuation
and ensuring safety by securing the parish until access is safe.

Cameron Parish School Board President Dwayne Sanner, Vice-President Scott Nunez, Loston McEvers, Karen Nunez, Marsha Trahan, Marvin Trahan, Dot Theriot

Stephanie Rodrigue, Superintendent of Schools

LEGAL NOTICES
Cont. from Page 8

NOW, THEREFORE, BE IT RESOLVED, that the Cameron Parish Police Jury does hereby request the Louisiana Department of Transportation and Development to consider raising the elevation of the one-eighth mile section of Louisiana State Highway 384 which runs east of its intersection with Louisiana State Highway 385 at Boone's Corner.

NOW, THEREFORE, BE IT FURTHER RESOLVED, that a copy of this resolution shall be forwarded to the Region 7 meeting for their consideration.

ADOPTED AND APPROVED this 11th day of August, 2008.

APPROVED:
MAGNUS MCGEE, PRESIDENT
CAMERON PARISH POLICE JURY

ATTEST:
BONNIE W. CONNER, SECRETARY

The following resolution was offered by Mr. Farque, seconded by Mr. Racca and declared duly adopted:

RESOLUTION
STATE OF LOUISIANA
PARISH OF CAMERON

WHEREAS, the Cameron Parish Police Jury wishes to move the Precinct 1 Polling Place from Johnson Bayou Recreation Center, 135 Berwick Road, Johnson Bayou, Louisiana to the Johnson Bayou Community Center, 5556 Gulf Beach Highway, Johnson Bayou, Louisiana.

NOW, THEREFORE BE IT RESOLVED, that the Cameron Parish Police Jury does hereby relocate the Precinct 1 Polling Place to the Johnson Bayou Community Center, 5556 Gulf Beach Highway, Johnson Bayou, Louisiana.

ADOPTED AND APPROVED this 11th day of August, 2008.

APPROVED:
MAGNUS MCGEE, PRESIDENT
CAMERON PARISH POLICE JURY

ATTEST:
BONNIE W. CONNER, SECRETARY

ADOPTED AND APPROVED this 11th day of August, 2008.

APPROVED:
MAGNUS MCGEE, PRESIDENT
CAMERON PARISH POLICE JURY

ATTEST:
BONNIE W. CONNER, SECRETARY

It was moved by Mr. Burleigh, seconded by Mr. McDaniel and carried, that the Secretary is hereby authorized, empowered and directed to write a letter to the Lower Cameron Ambulance Service District Board requesting their consideration to station an ambulance within the Town of Cameron.

It was moved by Mr. Racca, seconded by Mr. McDaniel and carried, that the Cameron Parish Police Jury does hereby amend its travel policy to match the current State of Louisiana travel policy, relative to mileage reimbursement and meal allowances.

It was moved by Mr. McDaniel and seconded by Mr. Trahan, that Mack Haynie shall be granted a variance to place a commercial building below the base flood elevation. The vote thereon was recorded, as follows:
YEAS: Thomas McDaniel, Scott Trahan

NAYS: Magnus McGee, Kirk Burleigh, Steve Racca, Darryl Farque, Charles Precht, III.

ABSENT OR NOT VOTING: None

The motion failed.

It was moved by Mr. Trahan, seconded by Mr. Racca and carried, that the location of the proposed Cheniere House is hereby designated to be 180 Henry Street, Cameron, the site of the pre-Hurricane Rita Cooperative Extension Office.

It was moved by Mr. Farque, seconded by Mr. McDaniel and carried, that the Treasurer is hereby authorized, empowered and directed to pay the July, 2008 bills.

It was moved by Mr. Farque, seconded by Mr. Trahan and carried, that the Cameron Parish Police Jury does hereby pledge a financial commitment to the Southwest Louisiana Alliance in the amount of seventy-five hundred dollars (\$7500) per year for a period of five (5) years.

There being no further business, on motion of Mr. Farque, seconded by Mr. Trahan and carried, the meeting was declared adjourned.

APPROVED:
MAGNUS MCGEE, PRESIDENT
CAMERON PARISH POLICE JURY

ATTEST:
BONNIE W. CONNER, SECRETARY

Run: Sept. 18 (S 19)

PROCEEDINGS
CAMERON PARISH POLICE JURY

August 25, 2008
The Cameron Parish Police Jury met in special session on Monday, August 25, 2008, at the Cameron Courtroom in the Village of Cameron at 5:30 o'clock P.M. The following members were present: Mr. Magnus McGee, Mr. Darryl Farque, Mr. Thomas McDaniel, Mr. Charles Precht, III, Mr. Steve Racca, Mr. Kirk Burleigh and Mr. Scott Trahan.

It was moved by Mr. Farque that Item No. 3 on the agenda, a resolution relative to borrowing by Mosquito Control Abatement District No. One, shall be tabled. The motion died for lack of a second.

The following resolution was offered by Mr. Precht, seconded by Mr. Farque and declared duly adopted:

RESOLUTION
A RESOLUTION APPROVING THE DEBT STRUCTURE WITH RESPECT TO BORROW-

Vitter praises delcaration

U. S. Sen. David Vitter applauded the announcement of a commercial fishery failure in Louisiana by Department of Commerce Secretary Carlos M. Gutierrez. Commercial fisheries along the Louisiana coast have sustained significant damage in recent weeks as a result of Hurricanes Gustav and Ike.

Following the impact of Hurricane Gustav on the state, Vitter sent a letter to Secretary Gutierrez requesting that he declare a commercial fishery failure in Louisiana.

"These fisheries are of great importance to Louisiana, and to the rest of the country," said Vitter. "Any interruption of fishing operations along the Gulf Coast has a resounding effect at the national level and it is critical that the commercial fishing industry is provided with all the resources it needs to ensure its continued operation."

Louisiana supplies nearly one third of the fish harvested in the lower 48 states by weight and thousands of commercial fisheries operate along the Gulf Coast of Louisiana. This declaration allows federal assistance to be made available to the state.



ING BY MOSQUITO ABATEMENT DISTRICT NO. ONE OF CAMERON PARISH, LOUISIANA FROM THE LOUISIANA LOCAL GOVERNMENT ENVIRONMENTAL FACILITIES AND COMMUNITY DEVELOPMENT AUTHORITY ("LCDA").

WHEREAS, on January 17, 2008, the Board of Commissioners of Cameron Parish Mosquito Abatement District No. One of Cameron Parish, Louisiana ("Mosquito Abatement District") authorized borrowing not exceeding \$4,800,000 from the LCDA to finance certain projects for the Mosquito Abatement District; and

WHEREAS, the Police Jury must approve by resolution the debt of its component governmental units, including the Mosquito Abatement District;

NOW, THEREFORE, BE IT RESOLVED BY THE POLICE JURY OF CAMERON PARISH, LOUISIANA, in regular public session convened, that:

SECTION 1. The debt structure and debt service schedule proposed by the Cameron Parish Mosquito Abatement District No. One of Cameron Parish, Louisiana for borrowing not exceeding \$1,200,000 from the LCDA, as outlined on Exhibit A hereto, is hereby approved.

This Resolution having been submitted to a vote, the vote thereon was as follows:

YEAS: Charles Precht, III, Scott Trahan, Steve Racca, Thomas McDaniel, Kirk Burleigh, Darryl Farque, Magnus McGee

NAYS: None
ABSENT OR NOT VOTING: None

APPROVED AND ADOPTED at Cameron, Louisiana, on this the 25th day of August, 2008.

APPROVED:
MAGNUS MCGEE, PRESIDENT
CAMERON PARISH POLICE JURY

ATTEST:
BONNIE W. CONNER, SECRETARY

There being no further business, on motion of Mr. Farque, seconded by Mr. Racca and carried, the meeting was declared adjourned.

APPROVED:
MAGNUS MCGEE, PRESIDENT
CAMERON PARISH POLICE JURY

ATTEST:
BONNIE W. CONNER, SECRETARY

Run: Sept. 18 (S20)

PUBLIC NOTICE
LOUISIANA DEPARTMENT OF ENVIRONMENTAL QUALITY (LDEQ)
LIBERTY GAS STORAGE, LLC
PELICAN COMPRESSOR STATION
PROPOSED INITIAL PART 70 AIR OPERATING PERMIT

The LDEQ, Office of Environmental Services, is accepting written comments on a proposed initial Part 70 air operating permit for Liberty Gas Storage, LLC, 2100 W. Burton Street, Sulphur, LA 70663 for the Pelican Compressor Station. The facility is located at 400 Black Lake Road, Hackberry, Cameron Parish.

Liberty Gas Storage, LLC a natural gas storage facility and compressor station (SICC 4922) requested an initial Part 70 air operating permit to construct and operate the natural gas compressor station. In addition, Liberty Gas Storage, LLC proposes to construct an underground natural gas storage facility.

This permit was proposed as an expedited permit in accordance with LAC 33:1, Chapter 18.

Estimated emissions in tons

FEMA tells how to register for damages

Louisiana residents who have been impacted by both hurricanes Gustav and Ike should register twice, once for each disaster.

Due to heavy call volume, residents may find it difficult to get through. Those who have minimal damage are encouraged to wait so that those with more damage can register first.

Register online if possible at www.fema.gov. It is recommended that those who register by phone do so in off hours, which is late at night or early in the morning. The phone numbers are 800-621-FEMA (3362) or (TTY) 800-462-7585, and calls can be taken in any language.

Either online or by phone, the system is open 24 hours a day seven days a week until further notice.

The incident period for Hurricane Gustav was Sept. 1 through Sept. 11 and a total of 42 parishes have been included in a presidential major disaster declaration.

Only damage or losses occurring between those dates may be considered for eligibility for federal assistance for that disaster.

The incident period for Hurricane Ike began on Sept. 11 and there are currently 14 parishes eligible for federal funding as a result of that storm.

The new disaster declaration for Hurricane Ike does not affect the previous disaster declaration for Hurricane Gustav. Victims of Hurricane Gustav should continue registering with the Federal

per year as follows:
Pollutant, Phase I (Construction Proposed), Phase II (Operation Proposed)
PM₁₀, 0.10, 0.66
SO₂, 0.32, 0.86
NO_x, 132.00, 138.69
VOC, 68.36, 56.70

A technical review of the working draft of the proposed permit was submitted to the facility representative and the LDEQ Surveillance Division. Any remarks received during the technical review will be addressed in the "Worksheet for Technical Review of Working Draft of Proposed Permit". All remarks received by LDEQ are included in the record that is available for public review.

Written comments, written requests for a public hearing or written requests for notification of the final decision regarding this permit action may be submitted to Ms. Soumaya Ghosn at LDEQ, Public Participation Group, P. O. Box 4313, Baton Rouge, LA 70821-4313. **Written comments and/or written requests must be received by 12:30 p.m., Tuesday, November 4, 2008.** Written comments will be considered prior to a final permit decision.

If LEDQ finds a significant degree of public interest, a public hearing will be held. LDEQ will send notification of the final permit decision to the applicant and to each person who has submitted written comments or a written request for notification of the final decision.

The application, proposed initial Part 70 air operating permit, Statement of Basis and Environmental Assessment Statement (EAS) are available for review at the LDEQ, Public Records Center, Room 127, 602 North 5th Street, Baton Rouge, LA. Viewing hours are from 8:00 a.m. to 4:30 p.m., Monday through Friday (except holidays). **The available information can also be accessed electronically on the Electronic Document Management System (EDMS) on the DEQ public website at www.deq.louisiana.gov.**

An additional copy may be reviewed at Cameron Parish Library-Hackberry Branch, 983 Main Street, Hackberry, LA.

Inquiries or requests for additional information regarding this permit action should be directed to Dr. Marta Vasquez, LDEQ, Air Permits Division, P. O. Box 4313, Baton Rouge, LA. 70821-4313, phone (225) 219-3130.

Persons wishing to be included on the LDEQ permit public notice mailing list or for other public participation related questions should contact the Public Participation Group in writing at LDEQ, P. O. Box 4313, Baton Rouge, LA 70821-4313, by email at deqmailrequest@lagov.org or contact the LDEQ Customer Service Center at (225) 219-LDEQ (219-5337).

Permit public notices including electronic access to the proposed permit and statement of basis can be viewed at the LDEQ permits public notice webpage at www.deq.louisiana.gov/apps/pub/Notice/default.asp and general information related to the public participation in permitting activities can be viewed at www.deq.louisiana.gov/portals/tab/id/2198/Default.aspx.

Alternatively, individuals may elect to receive the permit public notices via email by subscribing to the LDEQ permits public notice List Server at http://listserv.org/loeq_pn_listserv.htm.

All correspondence should specify AI Number 158683, Permit Number 0560-00268-V0, and Activity Number PER20080001.
Run: Sept. 18 (S 21)

County agents report on hurricane damages

Coastal residents assessing their damage from Hurricane Ike compared this storm with Hurricane Rita in 2005.

In Vermilion Parish, residents said the water rose much slower and was not as high.

That wasn't the case in Cameron Parish, where LSU AgCenter county agent Gary Wicke said the water was higher in some places, especially in Johnson's Bayou, and the surge even reached the Lake Charles airport.

Flooding at the temporary LSU AgCenter Extension Office for Cameron Parish, located in the Grand Lake community, was inaccessible Monday, Sept. 15, but Wicke expected the water to recede enough to allow his staff to return by Wednesday, Sept. 17.

Dr. Johnny Saichuk, LSU AgCenter rice specialist, and research associate Kim Landry measured salt levels Sept. 15 in standing water in Cameron and lower Jefferson Davis parishes, finding high levels of saltwater. "A lot of it went off the scale," Saichuk said.

It's difficult to say now if Ike brought more saltwater inland than Rita, he said, but the effect may be diminished this time.

"When Rita came in, there was a drought so the land and the ditches soaked up the water," he said. "But in this case, we had a lot of rain before the storm."

Saichuk said he saw several rice fields where the second crop would be lost from saltwater.

Stuart Gauthier, LSU AgCenter county agent in Vermilion Parish, and Howard Cormier, retired LSU AgCenter county agent, surveyed the east end of Vermilion Parish and found salt levels as high as 13,500 parts per million at the Frances and David LaCour farm south of Mouton Cove and 2,000 ppm east of Abbeville. Cormier said the average level was approximately 9,000 ppm.

Many areas of the town of Erath were flooded, and salinity levels exceeded 9,000 ppm.

Cormier said the storm surge from Ike didn't appear to have the destructive force that Rita brought to Vermilion Parish, and Gauthier said the fact that most fences are still standing after Ike supports that idea.

Cattle and sugarcane farmer Sam Duplantis said he has been struggling to get hay to his cattle. "All the pastures are full of salt," he said.

Duplantis' home flooded with Rita, but not this time, so he brought dehumidifiers to help dry out the residence of farmer Jimmy Domingue.

Domingue said he had only a few inches of water in his home, compared to 3 feet with Rita.

But Domingue said hurricanes Gustav and Ike will hurt his sugarcane crop. "The last storm (Gustav) leaned it this way, and this one (Ike) turned it over," he said.

Domingue said many of the cane plants suffered broken tops, and that can affect sugar yields by as much as 30 percent to 40 percent.

Norma and Tommy Romero were cleaning out their flooded home Sept. 15 with help from a crew of friends and neighbors at the boat landing on Boston Canal. The flood water didn't get as high as Rita, but that's little consolation with a mess of muddy goo that covered everything.

"We had 4 feet of water this time and 5 and a half the last time," Norma Romero said.

For rice farmer David LaCour, the storm flooded his bins filled with this year's crop, just as it did with Hurricane Rita, but the

water was not as high this time.

A neighbor provided a large generator to help power fans to dry out the crop in the bins. The soaked rice will have to be removed, but LaCour said the process won't be as difficult after the experience he gained from Rita.

"I know exactly what to do this time," he said. He will use large fans to draw the moisture out from the bottom of the bins.

LaCour has been dealing with the worry about the possibility of storms for weeks now. "We've been having this threat since Aug. 15," he said.

He doubts he'll be able to plant a crop next year because fields were flooded with saltwater.

"I've probably lost my crawfish crop," LaCour said.

State Commissioner of Agriculture and Forestry Mike Strain told a group of farmers Sept. 15 he will meet with U.S. Agriculture Secretary Ed Schafer this week to stress the needs of Louisiana farmers. Dr. Bill Richardson, LSU AgCenter chancellor, will be at that meeting along with Ronnie Anderson, state president of the Louisiana Farm Bureau.

"We've asked for the entire state to be declared a natural disaster for agriculture," Strain said.

Strain said efforts are being made to get fuel to pump water off low-lying areas. He said military transport planes will begin flying mosquito control missions starting Sept. 17. "They will be here for 15 days," he said.

Farmer Glenn Ray Trahan of Gueydan said mosquitoes are taking their toll on cattle, causing mortality in some cases.

Farmer Johnny Boudreaux of Perry said flooded pastures will be hurt by lingering salt contamination that will interfere with forage growth. A military helicopter from Meridian, Miss., is being used to haul hay to stranded cattle.

Farmers told Strain that a buffer needs to be built to protect the coastal area from storm surge, and Strain agreed.

Farmer Dane Hebert of Maurice said studies have been done to show the need for a storm surge barrier. "It's time now to act," he said.

Andrew Granger, LSU AgCenter county agent in Vermilion Parish, said incentives are needed to help cattle owners with the expense of moving cattle out of harm's way. He said parish cattle producers moved a total of 4,000 head to higher ground ahead of the storm with no government assistance. But many cattle owners who lost cattle in Hurricane Rita were compensated with \$800 for each animal.

"We feel like we're being treated by the government like second-class citizens," said farmer Hank Moss.

Moss said he's discouraging his son from becoming a fifth generation farmer. He said many farmers are likely to give up their livelihoods because of the storms.

"A lot of them haven't recovered from Rita, and it's going to take a lot out of the game," Moss said.

State Rep. Simone Champagne of Jeanerette said coastal residents are weary from dealing with hurricane damage.

"These people can't go through this anymore," she said. "They have done it twice in three years."

Ted Giroard, Vermilion Parish Farm Bureau chairman, said the damage to the agricultural community is far-reaching. "It's heart-breaking to hear and see the losses," he said.

CITGO seeks SPR crude

CITGO Petroleum Corporation has confirmed a formalized request to the Strategic Petroleum Reserve (SPR) for delivery of one million barrels of crude to its Lake Charles refinery, which remains one of two refineries operating within the United States Department of Energy's Lake Charles, Port Arthur and Houston/Galveston regions following hurricanes Gustav and Ike.

Crude delivery options have been severely curtailed post hurricanes Gustav and Ike, including the closures of

the Sabine Pass and Calcasieu Ship Channel waterways. CITGO's request for SPR crude is an effort to alleviate potential fuel shortages in the United States.

"CITGO strictly adheres to its emergency and business continuity plans, maintaining operations in a safe manner," said CITGO Chairman, President and CEO Alejandro Grandado. "We are fortunate to have been able to maintain close to normal operations through hurricanes Gustav and Ike, helping to ensure continued fuel supplies for U. S. consumers," Grandado concluded.

Disaster Recovery Cleaning up The LSU AgCenter can help.



As hurricane recovery efforts continue in South Louisiana, the LSU AgCenter can provide reliable, research-based information on home and garden damage, food and water safety, avoiding hazardous molds, personal finances, stress management and other topics. Through our unique network of parish offices around the state, we can answer many of your clean-up questions. You can find more detailed information by visiting our Web site at www.lsuagcenter.com/disasterrecovery or contacting us for a free Storm Recovery Guide.

Food and Water Safety Water

For instructions on purifying water, contact your local LSU AgCenter office or call for our free Storm Recovery Guide. You may also visit our Web site at www.lsuagcenter.com



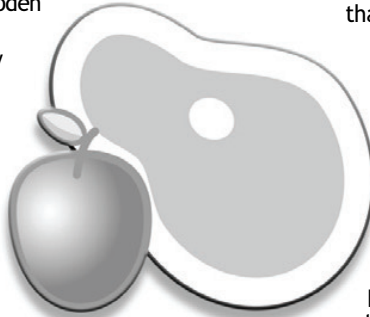
Water Well Purification

After a flood, it is important to take every precaution to ensure the safety of your well water. First, it is necessary to inspect and clean the well and pump before using them. You may want to have your water well driller or contractor check out the well before using it.

Have the water sampled and tested. The water IS NOT safe for drinking until lab results show no indication of total coliform bacteria. You can discuss the final lab results with the lab or local parish health unit. It is important to remember that disinfection will not remove chemicals that may have contaminated your well during a flood.

Food and Food Preparation Items

- Do not eat food that may have come into contact with floodwater.
- Discard all food that came in contact with floodwaters including canned goods. It is impossible to know if the containers were damaged and the seals compromised.
- Discard wooden cutting boards, wooden spoons, plastic utensils, baby bottle nipples and pacifiers. There is no way to safely clean them if they have come in contact with flood waters.
- Thoroughly wash metal pans, ceramic dishes and utensils with hot soapy water and sanitize by boiling them in clean water or by immersing them for 15 minutes in a solution of 1 teaspoon of chlorine bleach per quart of water.
- Clean and sanitize all kitchen surfaces.
- Wash and sanitize dishes, utensils and appliances.



Avoiding Mold Hazards

A flood-damaged building requires special attention to avoid or correct a mold population explosion. Molds produce spores that float and spread easily through the air, forming new mold growths (colonies) when they find the right conditions - moisture, nutrients (nearly anything organic) and a place to grow.

Mold problems can result in damage to materials and health. The longer mold is allowed to grow, the greater the risk and the harder it is to remedy. So as soon as the floodwaters recede and it is safe to return, don't delay cleanup and dry out.

People are mainly exposed to mold by breathing spores or fragments, and can also be exposed through skin contact. Wearing gloves and a mask or respirator that can filter mold spores (N-95 or better) is recommended.

Although there is wide variation in how people are affected by mold, long-term or high exposure is unhealthy for anyone. Exposure to mold can trigger allergic reactions and asthma attacks, may suppress the immune system or have other effects. Some types of mold can produce mycotoxins in certain conditions, which can be present in live and dead spores and fragments in the air. "Black mold" is a misleading term since many types are black.

Mold testing is not usually needed and is rarely useful. Some insurance companies and legal services may require sampling as a form of documentation. Professional mold remediation contractors may test before and after cleanup to provide evidence of the cleanup's effectiveness.

To clean up mold, follow these steps and refer to the EPA guidelines: *A Brief Guide To Mold, Moisture, and Your Home* or *Mold Remediation In Schools and Commercial Buildings* available online at www.epa.gov/iaq

- Isolate Work Area and Ventilate to Outdoors:** Disturbing mold colonies can cause a massive release of spores, so seal off the contaminated area from the rest of the house. If power is on, use a fan to exhaust air to the outdoors.
- Remove And Discard Moldy Materials:** Porous moldy or sewage-contaminated materials should be removed, bagged and thrown away - including gypsum wallboard, insulation, plaster, carpet/ carpet pad, ceiling tiles, processed wood products and paper. To minimize the spread of spores, cover moldy material with plastic to contain spores before removing and discard it.
- Clean Surfaces:** Surface mold on non-porous materials such as hard plastic, concrete, glass, metal and solid wood can usually be cleaned. Cleaning must remove, not just kill, the mold because dead spores can still cause health problems. After cleaning, choose to use a disinfectant to kill any mold missed by the cleaning. In the case of sewage contamination, disinfection must be performed. Contact your local health department for appropriate advice. On color-fast, non-metal surfaces, you may disinfect with a solution of 1/4 to 1/2 cup bleach per gallon of water. Do not use in the air system. Milder, less corrosive disinfectants include alcohols, disinfecting cleaners and hydrogen peroxide. Always handle with caution, never mix bleach with ammonia and test on a small area before treatment.
- Speed Dry:** Dry all wet materials as quickly as possible. Use air conditioning or heat with fans and dehumidifiers, if possible. New mold colonies can form in as little as three days if materials stay wet. Wood and other materials that may look dry can still be wet enough to support regrowth.
- Remain on Mold Alert:** Continue looking for signs of moisture or new mold growth. If mold returns, repeat cleaning and consider using speed drying equipment and moisture meters. Regrowth may signal that the material was not dry enough or should be removed. Rebuilding and refurbishing should wait until all affected materials have dried completely.

Salvaging/Cleaning Furniture Submerged or wet wooden furniture

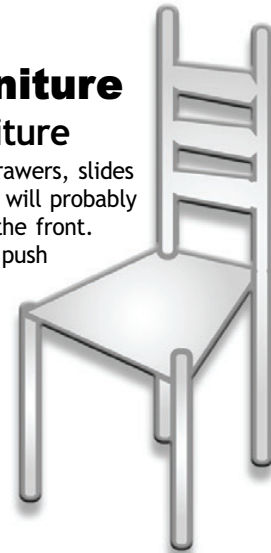
Take furniture outdoors, and remove as many drawers, slides and removable parts as possible. Drawers and doors will probably be stuck tight. Do not try to force them out from the front. With a screwdriver or chisel, remove the back and push out the drawer from behind.

After you have removed movable parts, clean off mud and dirt, using a hose if necessary.

Take all furniture indoors and store it where it will dry slowly. Furniture left in the sunlight to dry will warp and twist out of shape.

When furniture is dry, reglue it if necessary. You will need equipment and clamps to reglue some pieces. Before you start, decide whether you have the time, equipment and ability to do the work. Consult an experienced carpenter if necessary. Many books are available on the subject.

To reglue loose joints or rungs, cut or scrape off old glue so the area will be as clean and free of glue as possible. Use a white all-purpose glue, following directions on container. Hold parts together with rubber rope tourniquets or C-clamps. To prevent damage from ropes or clamps, pad these areas with cloth.



Damp furniture - removing white spots

White spots or a cloudy film may develop on damp furniture that has not been submerged.

If the entire surface is affected, rub with a damp cloth dipped in (a) turpentine or camphorated oil or (b) in a solution of 1/2 cup household ammonia and 1/2 cup water. Wipe dry at once and polish with wax or furniture polish.

If color is not restored, dip 3/0 steel wool in oil (boiled linseed, olive, mineral or lemon). Rub lightly with the wood grain. Wipe with a soft cloth and re-wax.

For deep spots, use a drop or two of ammonia on a damp cloth. Rub at once with a dry cloth. Polish. Rubbing cigarette ashes, powdered pumice or a piece of walnut into spots may also help remove them. Be sure to wear rubber gloves when using these solutions.

Cleaning Tips

- Always wear rubber gloves when using cleaning solutions or working with flood-damaged or moldy furniture. Clean furniture outdoors.
- If mildew has developed, vacuum (preferably with an HEPA filter) surface or brush off with a broom.
- Read fiber content labels of upholstery. Test a hidden area using a solution of lukewarm soapy water (1 tablespoon soap to 1 quart water), or dilute denatured alcohol (1/2 alcohol and 1/2 water) or bleach solution (1 tablespoon bleach to a pint of water) to see if color is removed or fabric shrinks. Allow to dry, then decide if the fabric can be cleaned. Sponge fabric to remove dirt, and use bleach or alcohol solution to remove mildew. Fabric may be removed from frame to clean, depending on the damage.
- Remove tacks, nails, braid, other fasteners.
- Although wet synthetic foam padding can be restored, the risk of contamination and costs usually make replacement a better option. Wet cotton or other organic padding should always be replaced.
- Wipe down wooden frames with a wood cleaner or alcohol solution to remove mold or mildew. Wipe dry and allow to air dry in an open shady place (never dry furniture in direct sunlight).
- Dry springs and other metal parts. If rust has formed, you may need to replace or clean. Use steel wool and coat with paint. A light oil could be wiped on metal parts to help prevent later rusting. Many major manufacturers keep records of fabric or metal parts which can be ordered from the dealer for replacement.
- Be sure all parts are dry before reassembling.
- A reliable furniture repair shop will give estimates on cost of redoing furniture. Also, consider replacement cost and value of each piece. If insurance allows part value on flood-damaged furniture, it may be financially worthwhile to apply the money to new articles, rather than pay for extensive repairs.

Cleaning Carpets and Floors

Cleaning water-soaked carpets and floors is difficult in itself, but in the aftermath of a storm or flood, contamination by mud, silt, sewage and mildew can compound the problem.

It's best to replace carpets and get professional cleaners to work on floors, but this may not be possible. Begin cleanup as soon as possible.

- Pull up all saturated carpets and rugs, and take them outdoors.
- If you wish to salvage valuable rugs and water was not contaminated, hose muddy carpets down. Work a low-sudsing, disinfectant carpet cleaning product deep into soiled spots with a broom.
- If only small areas of carpet got wet from leaks, pull up and prop the wet carpet to dry. Cut away wet padding.
- To discourage mildew and odors, rinse the backing with a solution of 2 tablespoons bleach to 1 gallon water. Don't use this solution on wool carpets. Also disinfect the slab or subfloor.
- Discard and replace foam pads.
- Sections of subfloors that separate must be replaced to avoid buckling. When floor coverings are removed, allow subfloors to dry thoroughly. It may take several months. Disinfect wet surfaces.
- In wood floors, remove a board every few feet to reduce buckling caused by swelling. Ask a carpenter for tips on removing tongue-and-groove boards.
- Clean and dry floor thoroughly before attempting repairs. Using a dehumidifier will speed the drying process.
- In vinyl floors with wood subflooring, the floor covering should be removed so the subflooring can be replaced. With concrete floors, removal isn't necessary except to hasten drying of the slab.
- Loose tiles may be replaced if the floor has not been soaked. If water has seeped under sheet flooring, remove the entire sheet.
- While cleaning, wash exposed skin frequently in purified water. Wear rubber gloves.

The LSU AgCenter has information to help you avoid and recover from some of the problems created by Hurricanes Katrina and Rita. Here are tips to keep in mind when restoring your home and belongings. You can also find this information and other recovery topics in our free Storm Recovery Guide. To get yours, call your local LSU AgCenter office or visit our Web site: lsuagcenter.com/disasterrecovery

FREE

**Storm Recovery
Guide for Homeowners**

Our Storm Recovery Guide includes information on:

Be Safe: Stay Healthy after a Disaster

Safety in a Disaster Area, Dangers of Debris, Entering a Damaged Building, Food and Water Safety, Critters in Unusual Places, Avoiding Mold Hazards, These are Trying Times

Surviving/Recovering from Power Outage

Using Generators for Electrical Power, Play it Safe with Food, How to Cook when the Power Goes Off, Removing Odors - Refrigerator/ Freezer, Power Outage in Winter

Restoring Storm-damaged Buildings

Determining Structural Damage, Preliminary Repairs, Dry Well to Prevent Decay, Flooding and Damage-causing Pests, Repairing the Roof, Strengthen Weak Points

Salvaging Water-damaged Belongings

Caring for Large Electrical Appliances, Salvaging/Cleaning Furniture, Cleaning, Carpets/Floors, Cleaning Storm-soaked Clothing

Lawn and Garden Losses

Salvage Tips, Tree Debris and Renewal, Assessing Landscape Tree Loss, Small Fruit Strategies, Salinity and Turfgrass

Financial Recovery and Risk Management

Documenting Losses/Claims, Filing for Insurance, Homeowner's Insurance, Flood Insurance, Credit and Other Sources of Relief, Contracting Repairs/Rebuilding, Contract Essentials

To speak to an LSU AgCenter agent, call:

Calcasieu - 337.475.8812

Cameron - 337.562.8900

for this and other disaster recovery information, visit our Web site: www.lsuagcenter.com or call for a free Storm Recovery Guide





LOUISIANA ARMY National Guardsmen from the 2225th Multi-Role Bridge Company in Marrero loaded a Zodiac boat in anticipation of possible rescue missions after the landfall of Hurricane Ike. Zodiacs are 15-passenger inflatable boats that can be manned by three or six-man teams.
(U.S. Army Photo by Sgt. Angela K. Fry, 528th Engineer Battalion Unit Public Affairs Representative)



A YOUNG CHILD displayed the smile of a very happy customer as soldiers of the Louisiana Army National Guard complete another successful rescue of a Hackberry family late Sunday afternoon, Sept. 14, following the severe flooding of Cameron Parish caused by Hurricane Ike.
(U.S. Air Force Photo by Lt. Col. Reid A. Christopherson)



A HUMVEE, of the Louisiana Army National Guard's 225th Engineer Brigade, was used to conduct search and rescue missions in Cameron Parish following Hurricane Ike.
(U.S. Air Force Photo by Lt. Col. Reid A. Christopherson)



A CONVOY of Louisiana Army National Guard vehicles from the 199th Brigade Support Battalion in Alexandria is shown attempting to reach the small southwest town of Hackberry after the landfall of Hurricane Ike. The town received massive damage from flooding caused by the storm. The 199th BSB, 256th Infantry Brigade in Lafayette is operating transport missions for residents of South Louisiana who have been affected by the storm. The 256th has also been operating areas of safe haven known as Lily Pads, offering food and water for the flood victims.
(U.S. Army Photo by Sgt. Angela K. Fry, 528th Engineer Battalion Unit Public Affairs Representative)



A TWO-MEMBER boat team from the Louisiana Army National Guard's 1023rd Vertical Engineer Company, 528th Engineer Battalion in Monroe completed engineer assessment missions in Cameron Parish after the landfall of Hurricane Ike. The parish was inundated with flooding, making potential rescue and work missions difficult.
(U.S. Army Photo by Sgt. Angela K. Fry, 528th Engineer Battalion Unit Public Affairs Representative)

Church updates available online

Residents of Calcasieu and Cameron Parishes can log onto WWW.SWEETLAKEUMC.ORG for information about Sweet Lake United Methodist Church's upcoming activities and see pictures of Hurricane Ike flooding. This is a free service for the parishes from Gocampin.net



THE PICTURE of this sign was taken in Sweet Lake during Hurricane Ike.
(Photo by Kim Hebert.)



SGT. ANGELA FRY, member of 528th Engineer Battalion headquartered in Monroe, rejoices with her Aunt, Beverly Goodwich of Hackberry. Members of Fry's family were rescued on Sept. 13 by the joint efforts of the Louisiana Department of Wildlife and Fisheries, Calcasieu Sheriff's Department, 225th Engineer Brigade and 256th Infantry Brigade Combat Team after Hurricane Ike flooded the Cameron Parish community.
(Photo by Sgt. Rebekah L. Malone, 225th Engineer Brigade Public Affairs Representative)



STAFF SGT. Marie Glidden of the Louisiana National Guard led Hackberry residents into the Million Air hangar at Chennault Airport in Lake Charles. From there Wildlife and Fisheries agents assisted them in making contact with friends and relatives who could pick them up.
(U.S. Army Photo by Sgt. 1st Class Paul Meeker)

Hackberry residents rescued

By **SGT. 1ST CLASS PAUL MEEKER**, National Guard, Public Affairs Office

Members of three different Hackberry, households stayed in their homes through the fierce winds and flooding of Hurricane Ike, believing they wouldn't suffer any worse than they did during Hurricane Rita in September 2005. However, the water rose three to four feet in their homes, compared to one foot three years ago.
"Water came in around 9 p.m. We had made plans to go into the attic and had provisions there, so that's where we went," said Leroy East of Hackberry. "We stayed this time because it took us so long to get back to our property after Rita. But I won't stay again."
The six adults and two

pets were rescued from their homes by Hackberry firemen who picked them up via boat. The fire department had been alerted to their whereabouts by Louisiana Wildlife and Fisheries agents who had received a cell phone call from a relative of one of the stranded residents.
The National Guard helicopter, piloted by Chief Warrant Officers Kevin Dares and Don Pierce, picked them up from high ground and transported them to the Million Air hangar at Chennault Airport in Lake Charles. From there, Wildlife and Fisheries agents assisted them in making contact with friends and relatives who could pick them up.
The rescued citizens were Floyd and Bernadette Silver, Leroy and Pamela East, David Benoit and Dolores Duhon, as well as one dog, Tiny, and one cat, Bobaloo.



COMMAND SGT. MAJ. Ricky Griffin of the Louisiana National Guard led a group of stranded citizens to National Guard helicopters who then transported them from Hackberry to the Million Air hangar at Chennault Airport in Lake Charles. From there Wildlife and Fisheries agents assisted them in making contact with friends and relatives who could pick them up.
(U.S. Army Photo by Sgt. 1st Class Paul Meeker)



COMMAND SGT. MAJ. Kenneth Wagner of the 256th Infantry Brigade Combat Team helps Mary Louise Fowler with her puppy, Peanut. Mary and her husband, Fred, were rescued from their boat by the Calcasieu Parish Sheriff's Department after escaping from their flooded home near Hackberry, on Sept. 13. The family was then dropped off by the officers at the "Lily Pad" operated by 256th and transported out to safety in National Guard vehicles.
(Photo by Sgt. Rebekah L. Malone, 225th Engineer Brigade Public Affairs Representative)



LOUISIANA Army National Guardsmen from the 2225th Multi-Role Bridge Company in Marrero brought residents of Hackberry to dry land after the small town in the southwest portion of the state received massive flooding caused by the storm. Soldiers from the company were assigned to the area to offer assistance to the Department of Wildlife and Fisheries in Search and Rescue missions.
(U.S. Army Photo by Sgt. Angela K. Fry, 528th Engineer Battalion Unit Public Affairs Representative)





THE WATER on Hwy. 27 was receding as these folks drive in to "look and leave."
(Photo by Cyndi Sellers.)



MUCH OF THE water has drained away from Our Lady Star of the Sea Catholic Church in Cameron, but is still visible in the back right of the picture.
(Photo by Cyndi Sellers.)



THE CAMERON PARISH Post Office is shown behind the Capital One benches. The Capital One "bankmobile" was hauled out to safety before Hurricane Ike made landfall.
(Photo by Cyndi Sellers.)



CECIL SANNER'S office was wedged between buildings at St. Peter the Apostle Catholic Church in Hackberry by Hurricane Ike.
(Photo by Paul Sellers.)



THE DEBRIS on the entrance ramp of South Cameron Memorial Hospital shows the level reached by the flood waters of Hurricane Ike. Staff is already checking out the readiness of the hospital.
Photo by Cyndi Sellers.)



THE DANGEROUS ANGLE of this utility pole creates a hazard for motorists who drive under it.
(Photo by Paul Sellers.)



THE OWNERS of Grand Lake Discount Store returned Tuesday to survey the damage after Hurricane Ike.
(Photo by Cyndi Sellers.)



THIS PICTURE was taken at Oak Grove on Friday, Sept. 12 between 10 a.m. - 11:30 a.m., well before the NE quadrant of Hurricane Ike passed with the dirty side. Water was still rising.
(Photo by Jay Rutherford.)



SOUTH CAMERON Rural Health Clinic appears to be located on an island.
(Photo by Cyndi Sellers.)



THE OWNER of this vehicle may have trouble selling it now.
(Photo by Cyndi Sellers.)



CATTLE ARE shown being herded out of the parish in preparation for Hurricane Ike.
(Photo by Cyndi Sellers.)