



REV. JAY VanHorn has accepted the pastorate of Oak Grove Baptist Church and he and his family have moved here from the First Baptist Church of Boston, Mass. He and his wife, Linda, are shown with their four children: Collin, Michaela, Sarah and Seth.

Library gets Gates funds

By CYNDI SELLERS

The Cameron Parish Library system has become the first to receive funds from the Bill and Melinda Gates Foundation as part of the Gulf Coast Libraries Project. The grant money will be used to provide temporary library services for lower Cameron Parish.

In July, the Gates Foundation awarded \$12.2 million to SOLINET as part of the project, to assist public libraries in 13 communities in Louisiana and Mississippi.

Hurricane Rita wreaked havoc on the public library branches in Cameron. The main library is completely gone, except for a bookmobile and electronic equipment that Library Director Charlotte Trosclair was able to remove before the storm. The branches in Grand Chenier and Johnson Bayou were also destroyed, leaving the Grand Lake Library as the system's only survivor. The Hackberry Library received initial damage from the storm, but is now open for service.

The grant money will be

used immediately to support two temporary facilities and one bookmobile. The grant provides the Cameron Parish Library with support over three years for the temporary facilities, staff, operating expenses, computer/technology equipment and opening day materials.

The two temporary libraries are expected to be in service before the end of the year. The bookmobile will arrive in 2007 with the same level of support. All of these resources will restore lost services to affected families in Cameron Parish.

"We are thrilled to have the opportunity to support the community and residents in rebuilding efforts," commented Charlotte Trosclair, Library Director. "The hurricane hit our area so hard, and I am glad that we will be able to begin restoring services to our patrons."

Library Board President Cyndi Sellers is also very pleased by the announcement. "The Library Board is overwhelmed by the generosity of the Gates Foundation grant and the scope of sup

Cont. on Pg. 12.

Sempre to fund local playground

By CYNDI SELLERS

A playground for the children of Cameron will soon be installed at the Cameron Library site, thanks to a \$20,000 grant from Sempra. An additional \$1000 given by churches in Michigan to the First Baptist Church of Cameron to be used for the children will be donated to the project.

Sempre spokesperson Anya McInnis said the company has been looking for a project to benefit the eastern

part of the parish, and providing the children of Cameron with a safe place to play was a perfect opportunity.

Library Director Charlotte Trosclair and the Library Board plan to incorporate the playground into the design of the new library to be built on the site. "We hope parents will bring their children to the playground and also check out books to take home," Trosclair said. "I can see parents sitting on park benches reading their books while the children play."

1956 - 2006
Cameron Pilot



Years Of Serving
Cameron Parish!

Cam. Pilot preserver of history

By JERRY WISE

Besides serving as purveyor or news for a community or an area, a newspaper is also important for preserving the history of its circulation area.

Recognizing this service, the LSU Library, some 40 years or more, began microfilming all of the back files of Louisiana's newspapers and also copying all of the new issues as they came out.

The Cameron Parish Pilot, which is 50 years old this month, is one of the many papers from around the state which LSU has microfilmed and continues to so for the past half century.

Although it is not convenient for most people to go to Baton Rouge to research the Pilot's old issues, LSU has made available to area libraries these microfilms where they are accessible to area residents.

The McNeese University Library has microfilm of the Pilot's old issues from Oct., 1956 to 1997. These issues can be accessed on a microfilm reader on the second floor of the McNeese Library.

Copies of individual pages of papers can be obtained for 10 cents a page.

(It is hoped that McNeese will be able to bring its Pilot Cont. on Pg. 2

Job Fair to be held in Cameron

Employers with immediate job openings will recruit workers at a job fair from 9 a.m. to noon Thursday, Oct. 26 at the Cameron Courthouse in Cameron.

The job fair, co-sponsored by the Louisiana Department of Labor and the Cameron Parish Police Jury, is expected to attract as many as 10 area employers. Companies confirmed to attend include: Cameron Communications, Crain Brothers, Omni Energy Services, That Homebuilder Guy and the Cameron Parish Library.

The fair will be held in a temporary building on the grounds of the Cameron Courthouse. Jobseekers will be directed to the location by signs in the area.

For more information, contact Carol Pettyjohn with the Louisiana Department of Labor at 475-4900, ext. 145.



A STRONG LOW pressure system pushed Gulf water into downtown Cameron on Monday forcing traffic to detour through the back streets to avoid saltwater. Some of the water remained Tuesday as the Gulf remained high. This is a view of Cameron main street with the waterfront in the background. (Photo by Cyndi Sellers.)

Cameron area floods

By CYNDI SELLERS

Strong south winds of 30-40 mph over two days, combined with high tides, caused coastal flooding across Cameron Parish on Monday. Parish OEP Director Clifton Hebert reports that water rose to 1.5 and 2 feet on Marshall Street in Cameron, and still had not completely receded by Wednesday.

An area near the Cameron

Parish Library still had some water, possibly because the pumps draining the marshes east of Davis Road were still straining to remove the flood water from that area, keeping the drainage ditch full.

West of the Calcasieu River, Hwy 27/82 west of AB Dock was covered by water and debris in low spots, with some shoulder damage, and Hwy 82 west of Holly Beach also had wave washed debris.

Hwy 27 north of the Kelso Bayou Bridge in Hackberry had up to a foot of water over it during high tides.

Hebert said flood water in lower Cameron Parish is always salt water, and motorists who drive through it can expect severe damage to vehicle undercarriage and braking systems.

More rain, bad weather is expected Thursday, but not the coastal flooding experienced earlier in the week.

Fur Festival recognized Holly Beach property owners to meet 28th

The Southeast Tourism Society recently honored the 50th annual Fur & Wildlife Festival of Southwest Louisiana as a Top 20 Event for 2007. The festival will be held Saturday, Jan. 13 behind the courthouse.

All local natural resource industries will be celebrated during one of the area's "oldest and coldest" festivals. There are plenty of activities for festival goers such as pageants, dances with authentic Cajun music, exhibits and a carnival. In addition, some of the following unusual events will be present including trap setting contests, nutria and muskrat skinning contests, oyster shucking contests, archery, skeet shooting and dog trials.

Service set

Sunday, Oct. 22 at 5 p.m. there will be a "Service of Hope" on the grounds of the Wakefield United Methodist Church in Cameron. The church was destroyed by Hurricane Rita.

Everyone is invited. Please bring your own seating.

Legion meet

Cameron American Legion Post 176 will hold a meeting at 5:30 p.m., Tuesday, Oct. 25 at the Grand Lake Multi-Purpose Building.

All members and prospective members are invited to attend.

Food boxes

Senior Food Boxes will be given out by the Cameron Council on Aging Thursday, Oct. 19 from 12 noon until 4 p.m. and on Friday, Oct. 20 from 8 a.m. to 4 p.m.

Recipients must have signed up for the program in advance.

A meeting of all property owners in the beach community of Holly Beach will be held at 4 p.m. Saturday, Oct. 28 at the Boyd Boudreaux boat shed at 2314 Teal St. in Holly Beach.

Holly Beach Homeowners Association will be formed and there will be discussion of elevations, alternative housing types, sewer and other standards included in a community plan.

Cameron Parish Planner Ernie Broussard will discuss how the Holly Beach initiatives will be included in the parish-wide redevelopment plan currently under design.

All Holly Beach landowners, homeowners and residents are encouraged to attend the meeting.

Holly Beach, a resort community largely composed of camps and retirement homes, has been completely destroyed twice within the past 49 years.

In June, 1957 there were no structures left standing

Boudreaux opens shop

Cajun Depeaux, a gift shop offering gift baskets and novelties, has opened at 3006 Kirkman St., Lake Charles, in the Cottage Shop District.

Owned and operated by Cameron Parish native Craig Boudreaux, the shop will have a grand opening Saturday, Oct. 21, 10 a.m. - 5 p.m.

One of his specialties is pirogue gift baskets, in addition, cajun and Louisiana items, gifts and more are offered.

Hours for the shop are 10 a.m. - 5 p.m. The phone numbers are 562-1582 or 562-1675. Their website is www.cajundepeaux.com.

after Hurricane Audrey hit Cameron Parish.

The community was rebuilt and again was totally destroyed when Hurricane Rita hit last September.

There has little rebuilding this past year as property owners wait to see what restrictions will be placed on new construction.

Heberts tell new service

The opening of B & L Spray Foam Insulation at 397 W. Precht Rd. in Sweetlake has been announced by Clifton and Carryl Hebert, owners, and Brandon and Louis Hebert, operators.

The business specializes in Insul-Soy, a soybean based open and closed cell spray foam to be used for new homes, remodeling, storage buildings, coolers, vessel ice compartments, etc.

Free estimates are provided by the Cameron Parish family owned and operated business serving all of Southwest Louisiana and Southeast Texas.

Telephone 630-9027, office; 598-4790, home; or 421-8382, pager.

Food to be distributed

The disaster relief food distribution site in Cameron will be open this Friday from 9 a.m.-12 noon. only, due to reduced supplies. The center will be closed next week, but will re-open on Nov. 3 at full capacity, announced Rev. Cheryl Minvielle, of Minvielle Outreach Ministries.

A truck will arrive on Nov. 2, and volunteers will be needed to unload. The center is expected to be open at least through December.



MORE THAN 100 rose bushes were given to lower Cameron Parish residents Tuesday by the "Restoring Roses to Southern Garden" organization in California. The Cameron Parish Library coordinated the delivery of the roses. Pictured above, from left, are George LeBouef, Library employee; Joyce Hays, who received the first bush; Lee Stevens, Rose organization founder; her son, Paul Stevens; Charlotte Trosclair, Library director; and DeDe Sanders, Library employee. Stevens also presented Trosclair with a packet of letters from students and others who donated to bring beauty to the storm ravaged Gulf Coast. (Photo by Cyndi Sellers.)



MEMBERS OF the South Cameron girls softball team who won the state championship in the spring were presented with their championship rings by Cameron Communications representatives Gary Hightower, Trina Johnson and Connie Derouen who are shown above with the team at the recent South Cameron-Basilie game.

Funeral

GLENN JOSEPH RICHARD

Glenn Joseph Richard, 59, of Grand Chenier, died Friday, October 13, 2006 in a Lake Charles hospital.

Mr. Richard was born in Lake Charles and was a life resident of Grand Chenier. He was a graduate of South Cameron High School. He served in the Army during the Vietnam War. Mr. Richard worked 16 years as a mechanic for Tenneco Oil company before retiring. He then worked five years as a deputy for Cameron Parish before he found his true passion, truck driving. He was a self-employed truck driver for many years.

He was a Boy Scout leader for five years. He was also a lifetime VFW member and past Commander of the American Legion Post #364. He was a member of St. Eugene Catholic church.

He is survived by one son, Michael Richard of Laurel, Miss.; two daughters, Michelle Mhire of Laurel, Miss. and Madison Richard of Forked Island; one grandson; one brother, Edmond Richard and of Lake Arthur; one sister, Elizabeth Ball of Kaplan.

He was preceded in death by his parents, Freddie and Mamie Richard and one brother, Clayton Richard.

Funeral services were held Monday, Oct. 16 in St. Patrick Catholic Church in Sweetlake. Father Joe McGrath officiated. Burial was in St. Eugene Catholic Church Cemetery in Grand Chenier under the direction of Johnson Funeral Home.



AT THE END of September a celebration was held honoring AmeriCorp volunteers who aided with the cleanup of Cameron Parish following Hurricane Rita. Shown here is a group of the workers led by Julie Burleigh and sponsored by Dinah Landry. Gabby Gay, 4-year-old Head Start student, also helped out.

Cam. Pilot Cont. from pg. 1

microfilm up to date when funds are available to do so.)

The Cameron Parish Library also had the back issues of the Pilot on microfilm prior to Hurricane Rita. The microfilm did not survive the storm but, insurance funds, private and federal grants are expected to enable the library at a future date to replace the Pilot microfilm (with the LSU Library aid) and the reader needed.

There also exists another source of the Pilot's 50 years of issues--the paper's bound files that contain every issue published from 1956 to 2006. (The Pilot missed publishing only two issues during that period--the issue following Hurricane Audrey and the one following Hurricane Rita.)

These files are located at the Pilot's office (which it shares with the DeQuincy News) in DeQuincy, and they are accessible to anyone wish-

ing to do historical or genealogical research (or any other purpose.)

To view these files in the DeQuincy office, please make a reservation by calling 1-800-256-7323 or 337-786-8004. Viewing must be on Thursday or Friday when the office is not busy in getting out the two weekly newspapers.

Since these are bound files, it is difficult to make photocopies of articles but can be done in most cases. A small charge is made for copies. Files must be handled carefully as newsprint becomes fragile with age.

Persons doing research on their family history will find the Pilot's accounts of weddings, births and death very useful.

Historical articles by Archie Hollister, Bernice Stewart, W. T. Block, Geneva Griffith, and Nola Mae Ross also are useful in researching parish history.

Persons doing research on Hurricanes Audrey and Rita, will find the articles by Geneva Griffith, Nola Mae Ross, Donald Menard and Cyndi Sellers very valuable.

There is also one more important access to back issue of the Cameron Pilot--the internet.

Although the Pilot missed only one issue following Rita, many of our readers did not get the post-Rita issues since they had evacuated to "the four winds" and had not yet established a new mailing address.

In an effort to reach these readers, as well as every resident of Cameron Parish, we

Halloween party told

Evans P. Mhire Knights of Columbus Council 8324 will host a halloween party and costume contest at the Grand Chenier Park Saturday, Oct. 28.

Certificates will be given in place of trophies. Hot dogs and refreshments will be served at no charge to the public.

"Please bring the youngsters for some Halloween fun," a spokesman said.

The Council also will be selling plate lunches after church at St. Eugene Catholic Church Sunday, Oct. 21.

Creole canal to be cleaned

Gravity Drainage District 4 is planning to clean the Creole Canal and levee removing debris left by Hurricane Rita.

Anyone having objections to this work is asked to contact Rusty Welch at 794-5290 no later than Nov. 9 to voice their objection.

Kevin Boudreaux is chairman of the district's board.

started posting each issue of the Pilot (including all the pages) on the DeQuincy News' website. This site could and can be reached by anyone in the world by going to:

www.dequincynews.com and clicking on link "Looking for the Cameron Parish Pilot" at the bottom of the page.

Every issue since the storm, starting with the Sept. 22, 2005 issue, can be accessed from that location.

The pages are in color and can be printed out on a color (or black & white) printer.

The Pilot has continued this internet service for the past year since many residents are still displaced. It will be discontinued at the end of October.

Anyone wishing to subscribe to regular edition of the paper may do so by writing to: Cameron Pilot, P. O. Box 995, DeQuincy, La. 70633.

Subscriptions are \$18 a year in Cameron, Calcasieu, Beauregard and Vermilion parishes; \$19.40 elsewhere in Louisiana and Texas; and \$28.60 elsewhere in the U.S.

Anyone wishing to contact the Pilot may call 337-786-8004 or 1-800-256-7323. The fax number is 337-786-8131. The e-mail address is: dequincynews@centurytel.net



PICTURED AT the recent Road Home celebration held in Cameron Parish were Capt. Sammie Faulk, left, and State Rep. Gil Pinac of Crowley who is running for the Louisiana State seat being vacated by Senator Jerry Theunissen next year due to term limits. The decorated shrimp boots, which decorated the tables at the ice house dedication, were painted by children from St. Bernard Parish. (Photo by Cyndi Sellers.)

Singers, musicians needed for dedication

CHOIR MEMBERS SOUGHT

Singers and musicians from all parts of Cameron Parish are invited to be a part of the dedication of the Rita memorial at the Cameron Court House this Saturday afternoon.

A combined choir including singers from all parts of the parish will perform three well-known songs, accompanied by parish musicians. Choir organizer Cyndi Sellers hopes to have representatives from every church in the parish in the choir.

"It would be great to have a 50 member choir on the courthouse steps for this dedication," she said. "We have the talent and the heart to repre-

sent Cameron Parish and properly honor the memories of our loved ones who were displaced from their final resting places. If I couldn't contact every church, I want them to know they are welcome and needed."

Judy Rutherford will be playing keyboard, and Charles Primeaux is organizing guitarists for the program.

Musicians and singers are asked to assemble at 12:30 p.m. to organize for the ceremony, which is scheduled for 1:30 p.m. Sellers says no prior rehearsal will be needed because the songs are familiar to all. Music will be provided. Musicians should call her at 764-3352 ahead of time so that arrangements can be made for sufficient power.



Happy Ads

ARE HERE AGAIN!!



- Birthday
- Anniversary
- Promotion
- League Championship
- Graduation
- New Baby
- Bon Voyage
- Good Luck
- Engagement
- Wedding
- New Home

Price Includes Photo and Art-Work. Mail your request along with photo and payment by 4 p.m. Monday to P. O. Box 995, DeQuincy, La. 70633. Ads must be signed.

Place A Happy Ad For As Little As **\$22⁵⁰**

Congratulations! You've found a terrific way to send your best wishes to someone special for any occasion!

The Cameron Pilot

Call or come by now and make someone's day! 786-8004 or Toll Free: 1-800-256-7323

Welcome...To All My Friends In Cameron Parish!!

GREAT GIFTS FOR UPCOMING HOLIDAYS:

- Candles • Lamps • Oils
- LSU Items
- Mardi Gras • Purses



CAJUN DEPEAUX

Gift Baskets & Novelties

3006 Kirkman St. • Lake Charles • 337-562-1582 • 337-562-1675
OWNER: CRAIG BOUDREAUX



www.cajundepeaux.com

B & L Spray Foam Insulation

Specializing in

INSUL-SOY

Soybean Based

Open & Closed Cell
Spray Foam

Lower Utility Bills, Cleaner Indoor Air

- Spray Foam for New Homes
- Re-Models & Upgrades • Storage Buildings
- Under Floor of Elevated Homes • Coolers
- Vessel Ice Compartments and More

Proud to be

Locally Owned and Family Operated
In Cameron Parish - Serving all of
Southwest Louisiana & Southeast Texas

Always FREE ESTIMATES!

Owners:

Clifton & Carryl Hebert

Operators

Brandon & Louis Hebert

397 W. Precht Rd. • Sweetlake, LA

Business: (337) 630-9027

Home: (337) 598-4790

Pager: (337) 421-8382



SHOWN PERFORMING with the St. Peter's Catholic Church choir in Hackberry were, from left: Bryant Simon, Keith Welch, Robert (Bo) Welch, Gwen Constance, Kathleen Sanner and Mary Lou Little.



COURTNEY MOUTON has joined the staff of the Better Business Bureau of Southwest Louisiana and will head the complaint department. The Bureau offers the first step in dealing with disputes between customers and businesses. It serves all Southwest Louisiana including Cameron Parish. The telephone number is 478-6253.



ROBERT AND Carla (Trahan) Brown of Johnson Bayou announce the engagement and forthcoming marriage of their daughter, Alesha K. Trahan to Jeffrey K. Broussard son of Michael and Janice Broussard of Moss Bluff. The wedding is set for Saturday, November 18, 2006.

Roses for recovery is Calif. woman's mission

By **CYNDI SELLERS**

Lee Stevens, of Riverside, Calif., once turned to gardening to recover from a series of tragedies in her life. As she transformed a neglected yard into a beautiful garden, she lost her sadness and found peace.

When Hurricanes Katrina

and Rita devastated the Gulf Coast, Lee conceived the idea of helping people recover by giving them a rose bush. Along with the Riverside Rose Society she has embarked on a mission to give a rose as a symbol of hope to every household that lost a home or garden in the storms. That is over 200,000 rose bushes.

Last Tuesday, Lee, accompanied by her son Paul and husband David arrived in Cameron with over 100 rose bushes, the first installment in her ongoing effort to restore hope to the area.

Lee's program is called "Restoring Roses to Southern Gardens - Restoring beauty, one rosebush at a time." She wants every recipient to know that each bush was donated by someone who cares about them. Most of her donations come from people who have been hurt in life and know what it feels like. Most are not wealthy, but wanted to give something to make life better for storm victims.

"One little lady lives in an extended care facility," she said, "with only one potted plant, a rose, on her balcony. This lady, on a fixed income, said her rose gave her so much joy and comfort that she had to send \$20 to comfort someone else." Twenty dollars buys two one-gallon rose bushes for the program.

Students from the California School for the Deaf collected money and wrote letters to the recipients. Other letters and donations have come from all over the country. "They want you to know you are not forgotten," Lee said. "You are prayed for every day."

Lee wrote, "We are sending you this rose bush because we believe that the planting of a rose denotes several things: a love of beauty, a sense of permanency, and expectant hope for the future. We have hope that one day your wounded part of our nation will be restored to and perhaps surpass its former beauty. We are praying that the wounded lives of all who have been adversely affected by nature's fury will also be restored."

Each plant given to a Cameron Parish resident was accompanied by a packet of letters, rose growing tips, and a list of phone numbers of American Rose Society Consulting Rosarians in the Lake Charles area to call for assistance.

The Cameron Parish Library was contacted to coordinate the delivery of the roses. Even though more names were collected than roses delivered, Lee says she plans to continue until at least December of 2008, in hopes of getting a rose bush to every home or garden that was destroyed. Future deliveries will be announced as they can be organized.

Lunches told for schools

Lunch menus for all Cameron Parish schools for the week beginning Friday, Oct. 20 are as follows. All meals are served with milk:

Friday, Oct. 20 - Baked ham, lettuce cup, green beans, applesauce cake, wheat sliced bread.

Monday, Oct. 23 - Hamburger, oven fries, lettuce cup, chocolate chip cookie, hamburger bun, catsup.

Tuesday, Oct. 24 - Soft tacos, fixings cup, pinto beans, carrot cake, flour tortillas.

Wednesday, Oct. 25 - Spaghetti and meat sauce, buttered corn, fruit salad, peanut butter cookie, garlic toast.

Thursday, Oct. 26 - Oven fried chicken, seasoned rice, green beans, fruit cocktail, wheat biscuits.



WILKERSON SCRAP & SALVAGE



- Oilfield Transportation
- Scrap & Salvage
- Buy & Sell Used Pipe, Valves, Platforms, Plants and Oilfield Equipment

WENDELL WILKERSON

337-775-5944
1-800-259-5944
FAX: (337) 775-7956



FREE Vaccines for Cameron Parish Residents

Free vaccines for flu, pneumonia and tetanus are available to residents in Cameron Parish, thanks to a grant from Southwest Louisiana Area Health Education Center in cooperation with West Calcasieu Cameron Hospital.

EVERY WEDNESDAY THROUGH NOVEMBER 1
8AM - NOON
Hackberry Rural Health Clinic
1020 Main Street, Hackberry
762-3762



This is one shot worth taking!

West Calcasieu Cameron Hospital
www.wcch.com

WISE IDEAS



OFFERING THE BEST WAYS TO PROMOTE!

We're a new Advertising Specialties and Promotions Company geared to helping your business or organization grow. Let us help you with your...

- Promotional Products • Executive Gifts
- Recognition Gifts • Company Stores • Safety Programs
- Wedding & Social Invitations • Christmas Greeting Cards
- Business Cards, Stationary, & Writing Instruments
- Key Holders • Office Accessories • Gadgets Of Every Kind

IF YOU CAN PUT YOUR NAME ON IT, WE CAN GET IT!!!

THE BEST WISE IDEAS ARE OUR BUSINESS!

Want to win \$1,000 worth of promotional products? Need a Catalog??
Simply fill out the form on our website. www.bestwiseideas.com

Call us today, we look forward to earning your business!
Jeffra & Doug DeViney -- 912-5063



1-888-ROAD-2-LA
(1-888-762-3252)
TTY callers use 7-1-1 relay or
1-800-846-5277 (TTY) /
1-800-947-5277 (V)
www.road2LA.org

Program Sponsored by:
Program Funded by: U.S. Department of
Housing and Urban Development

STEEL ROOFING & SIDING

GALVALUME - GALVANIZED - PAINTED

From **\$9.95** Per Sq.

GOLDIN METALS, INC.
HARVEY, LA 800-777-6216 *Since 1942*

LARGE STOCK PROMPT DELIVERY

ROLL UP & SLIDING DOOR SYSTEMS
CUSTOM DESIGNED TRIM • STEEL PURLINS
ACCESSORIES • INSULATION
WOOD ROOF & FLOOR TRUSSES



Floors you keep until beautiful goes out of style.

Product shown is Eligna™ Country Collection in Hickory natural.

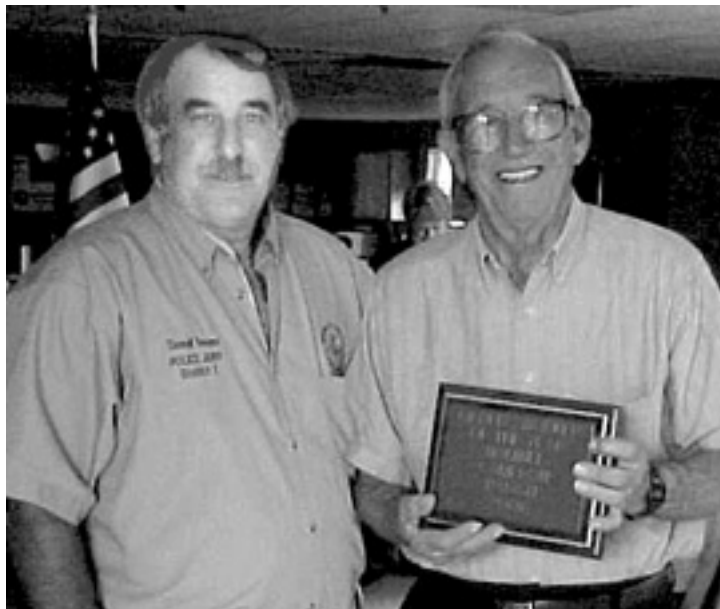
QuickStep is the laminate floor that can stand up to the wear and tear of everyday living and still look good. With a variety of styles and colors to choose from, we have a laminate floor to suit any decor. And all of our floors carry a wear warranty. It's never too soon to start enjoying a beautiful floor.

QUICK-STEP®
Floors with enduring beauty.™

Gilbert's, Inc.
CARPETS • FLOORS
1055 Hwy. 27 S. • Sulphur
527-9446 or
1-800-200-4250



DARRYL FARQUE is shown presenting Dinah Landry, Cameron Council on Aging Director, with plaques for her and her staff for their efforts to aid residents following Hurricane Rita.



C. J. DARBONNE of Grand Lake has been named Older Worker of the Year for Cameron Parish by the Cameron Council on Aging. Darbonne, right, is pictured with Police Jury Darryl Farque.



THESE HACKBERRY 4-H Boys competed in the 2006 LSU AgCenter Shoot Off. Zack Hebert won a red ribbon in rifle competition. Shannon Landry placed 2nd in the Archery competition.

LETTERS

Marine likes Pilot on line

doing business in the state of Louisiana.

A. G. Crowe
State Representative

Dear Editor:

I am concerned about liability coverage with Louisiana Citizens and other insurance companies doing business in the state of Louisiana.

According to the standard language found in most homeowner insurance policies, if the homeowner is required to raise their homes in order to qualify for flood insurance and to be within the FEMA guidelines, they would lose their liability coverage if they raise their home four feet or above.

This issue should be brought to the attention of all citizens and should be addressed immediately by the insurance commissioner and the insurance companies

Concern about home insurance

Dear Editor:

I read the letter from a marine who is willing to pay for the on-line version of the Pilot. I would also be interested in paying for an on-line Pilot.

Please consider this possibility and advise.

Thanks,
Dwight Fruge,
email is "d_fruge@century-tel.net".



Johnson Bayou High School News

BASEBALL CLINIC
On Saturday, Oct. 21 from 2 to 5 p.m. the Fellowship of Christian Athletes is sponsoring a baseball clinic featuring the McNeese State baseball players. All members of the parish are welcome to attend.

TRUNK OR TREAT
The Student Council will sponsor Trunk-or-Treat in the recreation center parking lot Monday, Oct. 30. This is taking place of Halloween night due to an away ball game on that night. Adults in the community who would normally pass out candy are encouraged to do so this year from their trunks/trucks rather than home.

Due to safety for children, please be at the recreation lot parked and ready to hand out treats no later than 6 p.m. on Monday. You are encouraged to decorate the trunk/bed of your vehicle. There will be a prize for the best decorated trunk/truck bed.

You can bring lawn chairs and pass out your candy as the little goblins walk around safely and Trunk-or-Treat.

After the children finish collecting candy, they can go to the tennis courts, where there will be music fun and games. For an additional fee, the children can choose to ride on the hayride. All children must be accompanied by an adult. The Sheriff's department will have a deputy on duty at this event.

WEEK IN SPORTS
J. B. Lady Rebels vs Grand Lake, 34 - 14.
J. B. Rebels vs. Grand Lake, 53 - 35.

Upcoming game: J. B. vs. Bethel Christian at Hackberry gym starting at 6 p.m. Friday, Oct. 20.

THANKS FOR DONATIONS
The following departments have received donations this past month for the students of J.B.H.S. We would like to extend thanks to all of these contributors:

AG Department: \$300 donation by Ronnie Breaux of LC., \$250 donation by Red Hill FFA in Illinois, \$500 donation by M&C Oilfield of Cameron. The AG students have purchased two pigs with some of these funds.

FACS Department: New Pampered Chef Kitchen tools in the amount of \$107.50 donated by Reesa & Layne Boudreaux, Adv. Director, The Pampered Chef of J. B.

English Department: Class set of Knight by Ellie Wiesel donated by Steven Newkirk and Donna Fuller of J. B.

A.G. EDWARDS
FULLY INVESTED IN OUR CLIENTSSM

WE ARE PLEASED TO ANNOUNCE

STACEY CORBELLO
ACCREDITED ASSET MANAGEMENT SPECIALIST

has joined our firm as a financial consultant.

3105 Lake Street
Lake Charles, LA 70601
stacey.corbello@agedwards.com
(337) 478-6107

2006 A.G. Edwards & Sons, Inc. • Member SIPC • agedwards.com

The Cameron PILOT

Customer Services

Complete the appropriate section(s) below and mail entire coupon to: THE CAMERON PILOT, P.O. Box 995, DeQuincy, La. 70633-0995
Allow Two Weeks For Processing.

Change of Address?

If You're Planning A Move, Please Attach Your Newspaper Label Here, Then Print Your Name and Address In The Box Below. Send Early To Insure Continuous Service.

Easy Renewal

To Renew Your Current Subscription, Please Check The Appropriate Box Below, Then Print Your Name and Address In The Box Below.

Cameron & Calcasieu Parish \$18.00

Elsewhere In Louisiana & Texas \$19.40

Elsewhere In The United States \$28.60

Want Advertising Info?

Please Check The Box Below and Print Your Name and Address In The Section Below.

Yes. Please Send Me Advertising Rate Information.

Name and Address

Be Sure To Complete This Section In Addition To Any Of The Sections You've Filled In Above.

From:

Name _____

Address _____

City _____ State _____ Zip _____

Don't Forget To Include Your Payment For Your Subscription.

Gift Idea

The Cameron Pilot Makes a Welcome Gift. And It's So Easy To Give. Simply Fill Out The Recipient's Name and Address Below, Then Print Your Name and Address In The Box Above. Rates same as in Easy Renewal.

Name _____

Address _____

City _____ State _____ Zip _____

(For More Than One Gift, Please Attach A Separate Sheet.)

Let Freedom Ring!

God Bless Our Troops

the King and Queen

invite you to join them at the

Renaissance Festival

Saturdays and Sundays
September 30th - November 19th

Special Discount Tickets

Adult \$18.00 Child (5-12) \$8.00
Tickets at the gate - Adults \$21.00 Child \$10.00

Discount Tickets at

Market Basket

www.texrenfest.com - 800-458-3435

Free shots available for Cameron residents

Cameron Parish residents can receive free vaccines for flu, pneumonia and tetanus thanks to a grant from Southwest Louisiana Area Health Education Center in cooperation with West Calcasieu Cameron Hospital. Residents may get their shots every Wednesday through Nov. 1 from 8 a.m. - 12 noon at the Hackberry Rural Health Clinic at 1020 Main Street. The phone number is 762-3762.

Personal Injury
Injury & Death Cases

Offshore Accidents • Auto Accidents
18 Wheeler Accidents
Head, Neck & Back Injuries • Burns
Worker's Compensation

Jody Lavergne
Attorney at Law

Todd Fontenot
Attorney at Law

STUTES, FONTENOT, LAVERGNE & LUTZ
ATTORNEYS AT LAW
A LIMITED LIABILITY COMPANY

713 Kirby Street • P.O. Box 1644 • Lake Charles, LA 70602

Call: 433-0022
FREE Initial Consultation

www.StutesLaw.com

Jack Hebert's **ALLSTAR** Pontiac GMC Truck, Inc.

Visit us at our website
www.allstarpontiacgmctruck.com
e-mail: allstar@allstarpontiac.net

Hwy. 90, Sulphur
527-6391
1-877-288-3314

2007 SIERRA 1/2 TON CREW CAB
V8
\$20,497
Includes all rebates + TTL.
T206-07, AM/FM stereo, CD, cruise, chrome grill, chrome style steel wheels & more.

2007 PONTIAC G-6
Gas Saver 30 mpg
\$16,597
Includes all rebates + TTL.
13-07, AM/FM, air, front license plate bracket & more.

0% FOR 60 MONTHS*
ON '06 SIERRAS 1/2 TON EXT. CABS, CREW CABS & CANYON REG CABS *WAC

2006 GRAND PRIX
Gas Saver 30 mpg
\$18,997
Includes all rebates + TTL.
Non GM Owners receive additional \$1000 OFF
79-06, auto, air, AM/FM, V6 & more.

2007 SIERRA REG CAB
\$12,997
Includes all rebates + TTL.
T233-07, wide side box pickup bed, AM/FM stereo, chrome front bumper & more.

SOME OF ALLSTAR'S BEST PRICES IN 30 MINUTES OF LESS!

2006 Pontiac Grand Prix Low miles, auto, A/C, GM Certified, fully loaded ...	\$13,997	2004 Ford Sport Trac Auto, A/C, AM/FM CD, power windows, locks, all loaded up ...	\$16,997
2004 Pontiac Montana Van Leather, auto, A/C, AM/FM CD, rear air, loaded ...	\$13,997	2004 GMC Sierra Crew Cab Siv# T81306A, auto, A/C, AM/FM CD, tilt, power ...	\$18,997
2002 Chevy Trailblazer Auto, A/C, AM/FM CD, power windows, locks ...	\$12,997	2001 Chevy Silverado Duramax Ex Cab Auto, A/C, AM/FM CD, 3/4, power windows, locks, ready to pull ...	\$19,997
2004 Mitsubishi Galant Auto, A/C, AM/FM CD, tilt, cruise, power windows, locks, all loaded up ...	\$13,997	2006 Toyota Tacoma Crew Cab PreRunner, V6, power windows, locks, 12,000 miles, XM radio, AM/FM CD, SR5 pkg., like new ...	\$23,997
2003 Chevy Silverado Ex Cab Siv# T97406B, auto, A/C, AM/FM CD, black, loaded ...	\$13,997	2006 Pontiac Solstice Conv. Less than 2000 miles, A/C, AM/FM CD ...	\$24,997
2002 GMC Yukon Auto, A/C, AM/FM CD, white, T39206A, loaded ...	\$13,997	2005 GMC 1 Ton Duramax Crew Cab Dually, leather, A/C, AM/FM CD, power windows, seats, fully loaded ...	\$31,997
2003 Nissan Maxima Sunroof, auto, A/C, AM/FM CD, fully loaded ...	\$15,997		
2004 GMC C1500 Crew Cab Black, auto, A/C, AM/FM CD, power windows, locks, all loaded up ...	\$15,997		

Slow Credit? Bankruptcy? Repo? Need help with Financing? A new or used vehicle - special financing rates call Bobbi Jo 527-6391 Ext. 27



JACLYN HIGGINS was crowned South Cameron High School Homecoming Queen 2006 at the /south Cameron vs Hamilton Christian game held at Barbe Stadium.

South Cameron High School News

HOMECOMING NEWS

Jaclyn Higgins was crowned Homecoming Queen.

BOX TOPS FOR EDUCATION

Please submit your Box Tops for Education for the Fall submission. The deadline is next week.

STUDENT COUNCIL NEWS

The members are selling Boo Bags. Bags are \$1 each to send to your friend(s) and your favorite teacher(s). Boo Bags will be delivered on Halloween.

FALL PICTURES

All students will be required to take pictures on Tuesday, Oct. 31. These pictures will be used in the yearbook. All orders must be pre-paid. Order forms are in the school office.

JR BETA

A Jr. Beta eligibility list is posted. All members must pay their dues by Nov. 3.

SAPE WEEK PLANS

SAPE WEEK is planned for Oct. 23 - 27. Students are encouraged to participate in the poster, poem and essay contests. Each winner will

receive a prize. This week's activities include: Monday-Crazy Hat and Sock Day, Tuesday-Crazy Hair Day (Poetry, Posters and Essays are due), Wednesday-Twin Day (Mock Wreck will be held at 1 p.m. for grades 7th-12th) Thursday - Career Day (Pep Rally will be held at 1 p.m.), Friday - Halloween Day.

CALENDAR OF EVENTS

Oct. 20 - Football Elton (away).
Oct. 23 - 27 - SAPE WEEK & GEE Retest.
Oct. 25 - JV Merryville (away).
Oct. 26 - Football Merryville Senior Night (home).
Oct. 31 - Fall pictures.

Tarpons lose to Hamilton

By CHRIS & LAURIE MUELLER

The 7th ranked and undefeated Hamilton Christian Warriors (7-0,2-0) proved to be too much for the (4-3,1-1) South Cameron Tarpons at Barbe High School football stadium last Thursday night. The Warriors routed the Tarpons 47-14 in a district 5-1A contest.

The Tarpons tied the score at 7 all early in the 4th quarter on a Deil Lalande to Jaylon Bell 25 yard pass play. The Warriors got on the board first on a 15 yard Jace Peterson run on the Warriors' first possession. After the Tarpon score, the Warriors scored 40 unanswered points to give them their seventh straight victory and end the Tarpons three game winning streak.

South Cameron's Justin Picou scored late in the 4th quarter on a 5 yard run for the Tarpons only other score on the night. Picou had 101 yards on 17 carries for his fourth straight game over 100 yards.

Hamilton's defense proved to be very strong holding the Tarpons to 207 total yards. Hamilton held its fifth straight opponent to 16 points or less.

Lalande completed 3 of 12 passes for 44 yards and rushed for 48 yards on 12 carries. Ronnie George added 36 yards on 6 carries for the Tarpons.

The Tarpons will be on the road next week for a very important district game with the (3-4,1-1) Elton Indians at 7 p.m. in Elton.



WITH THE Calcasieu River out of its banks due to Monday's strong south winds, boat docks in Cameron were largely inaccessible. (Photo by Cyndi Sellers.)

Dear Local Merchant,

Number 1 Reason why you should increase your advertising. . .

1. In times of uncertainty, consumers are careful and a little reluctant to spend. They want to be sure before they buy; they want information. One of the main ways they get information about products, services, prices and values is from advertising.



Call Jeffra DeViney, Advertising Sales Representative today to discuss your advertising . . .

786-8004 or 1-800-256-7323.

The Cameron Pilot

203 Harrison St. • P. O. Box 995 • DeQuincy, La. 70633

ALERT...

POWERHOUSES HAVE BEEN SPOTTED IN THE FOLLOWING AREAS:

Grand Lake Sweetlake Big Lake

We've been installing an advanced fiber optic network in your community to bring you three must-have services. Now you can make your house a PowerHouse by bundling your digital telephone, 150+ channel digital TV and high-speed Internet, all from Cameron Communications. Call today. Save money. Get one simple bill. It sure beats the alternative.

905-2111

Carlyss

We've added 150+ channel digital TV to our digital telephone and high-speed Internet offerings in Carlyss. So now you can have the bundle advantage from Cameron Communications: combine all three services on one bill for savings and convenience. Make the call today to get connected. It'll turn your house into a PowerHouse.

583-2111



PowerHouse

Digital Telephone • Digital Television • High-Speed Internet

from



Cameron Communications

Get connected.

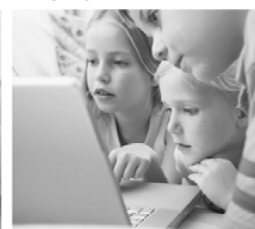
FULL-FEATURED DIGITAL PHONE SERVICE



CRYSTAL-CLEAR DIGITAL TELEVISION



ALWAYS-ON HIGH-SPEED INTERNET



1 800 737-3900

www.camtel.com

Call to check availability of these services at your address.

Football

CHRIS' PICKS

Last week I went 8-5 for a season record at 66-26 with a .718 winning percentage. This week I see:

- DeQuincy over Rosepine
- Pickering over South Beauregard
- Vinton over Lakeside
- South Cameron over Elton
- LSU over Fresno St.
- McNeese over Stephen F. Austin
- Auburn over Tulane
- ULL over Florida Atlantic
- Grambling over Jackson St.
- Utah St. over La. Tech



Propane Service



FOR HOMES BEYOND THE GAS MAINS

- Tanks
- Space Heaters
- Gas Heaters
- Gas Logs

LAKE ARTHUR BUTANE CO.

- New Location -
2329 E. McNeese St.
Lake Charles

1-800-256-1287
Or 439-4051

Established 1945



KINDERGARTEN CLASSES at Grand Lake School sold raffle tickets to raise money for the Fall Festival held Oct. 7th. Shown are Mrs. Donna Granger's class which had the top ticket sales. 1st Place: Hanna Willis, 2nd Place: Austin Vincent and 3rd place Taylor Aguilard. Top Row: Trey Taylor, Austin Vincent, 2nd place; Taylor Aguilard, 3rd place; Hanna Willis, 1st place; Mrs. Donna Granger. Middle Row: Briton Bartie, Isaac Harrington, Callie Gaspard, Wyatt Bonsall, Laney Hampton Bottom Row: Emily O'Bryan, Brailyn Benson, Ashlie Sterling, Chandler LeDoux, Jabob Reyes and Marllie Conner.

Mosquito populations expected to increase

By **JOSH HIGHTOWER**
BIOLOGIST
CAMERON PARISH
MOSQUITO CONTROL

Cameron Parish received heavy rains and high tides Monday from a storm system that swept through southwest Louisiana. More rain is expected later in the week. With all this rain we are expecting increased mosquito populations to emerge next week.

It normally takes a mosquito a week to hatch out of

its egg and develop in the water before it will emerge as an adult. With the cooler weather expected it may take them longer to develop, however sometime next week our parish will likely be experiencing higher than average mosquito populations.

There are many weather factors that keep us from being able to spray this time of year. It is illegal to spray in winds over ten miles per hour, and the plane's effectiveness drops considerably in winds over six miles per hour. We do

not spray in the fog for safety reasons.

All of our sprays are contact sprays. This means it will only kill the mosquitoes that the spray comes into contact with. Mosquitoes that are resting in the grass or in buildings will typically not die from the spray. The best mortality rate comes when mosquitoes are active and flying.

We don't spray when the temperature drops below 55 degrees because the vast majority of mosquitoes are no longer active and the spray will no longer kill them.

We will be checking all areas of the parish on a daily basis once the mosquitoes arrive, and when the weather

Early voting to begin here on October 26

Early voting for the Nov. 7, 2006 election will be held in the Cameron Parish Registrar of Voters office in Grand Lake from 8:30 a.m. to 4:30 p.m. Thursday - Saturday, Oct. 26-28 and Monday and Tuesday, Oct. 30 and 31, according to Suzanne Sturlese, Registrar of Voters.

The only race on the ballot is the 7th Congressional District election in which incumbent Charles W Boustany, Jr. is opposed by Mike Stagg, Democrat.

The two races in October for Secretary of State and Insurance Commissioners did not require runoffs.

The only other items on the Cameron Parish ballot are eight Constitutional amendments. These are in addition to the 13 that were approved in the September election.

Please, remember when you go vote you must have a picture ID with you Identification at the polls is not a new requirement but because of all the many newly registered voters its important that they be aware of this requirement.

Any person who feels they need assistance in voting due to a physical disability such as poor eyesight or other MUST get a physician's certificate confirming the need for assistance in voting and submit it to the registrar prior the election or give the certificate to the commissioners at the polls on Election day.

If you are registered in Cameron Parish and have

permits, we will spray the areas of the parish with the highest populations until the populations are reduced.

To report mosquito problems call the Cameron Parish Mosquito Control office at 905-5941.

been displaced as a result of Hurricane Rita, you are still eligible to vote in your home parish, (if you have not registered in another parish or state).

There are three ways: Absentee by mail ballot request. Early voting (which will be done the week before the election). In person at the polling place on day of election.

For more information on how to check your current registration status, and find out what is needed for a ballot request, please contact the Registrar's office at 905-1167.

The mailing address to request an absentee ballot is: Registrar of Voters Office, 10084 Gulf Hwy. (Grand Lake), Lake Charles, LA 70607.

Cam. Elem. honor roll

Cameron Elementary School's honor and banner roll for the first six weeks ending Oct. 2 is as follows:

Grade 2 - Honor roll - Lexi Jo DeBarge, Katia Castillo.

Grade 3 - Banner roll - Morgan Primeaux.

Honor roll - Alisha Patel, Erin Hill, Blake Trahan, J'nae Nunez.

Grade 4 - Banner roll - Jose Castillo, Sadie DeBarge.

Honor roll - Summer Choate, Joshua Trahan, Michael Sedlock.

Grade 5 - Banner roll - Jade Nunez.

Grade 6 - Banner roll - Karlee Primeaux.

Grade 7 - Banner roll - Raj Patel.

Honor roll - Breanne DeBarge, Andrew Mudd, Denia Mendez, Sabrina Peshoff, Paige Trahan.

H'berry High honor roll for first six weeks

The Hackberry High School honor roll for the first six weeks period is as follows:

Grade 2 - Cole Benoit; Seth Boudreaux; Hunter Corbello*; Reagan Darbonne; Peyton Delome; Mitchel Ducote; McClain Frey*; Gavin Guidry*; Gabriel Hebert*; Charli Little; Dakota McBroom*; Ricky Swire; Jeanne Trahan*.

Grade 3 - Brianne Beard; Jaci Granger*; Kelsey LeBoeuf; Dakota LeJeune; Christian McBroom; Kadie Reon; Lexie Stine; Logan Tingle*.

Grade 4 - Sydney Broussard; Hunter Frey; Justin Reon.

Grade 5 - Brett Bird; Allison Bridgewater; Kennedy Darbonne*; Anais LeFleur*; Tiffanie Raymond; Codie Reon; Destiny Simon; Mattie Stine*; William Toups; Jolie Trahan*; Luke Whelchel.

Grade 6 - Zachary Hebert; Kenton Leonards; Allison Romero*; Madison Shove*.

Grade 7 - Megan Johnson*; Jacob Pierce; Kimbely Portie.

Grade 8 - Jenna Granger; Devan; LaBove; Blaise Leonards; Kayla Vincent.

Grade 9 - Emily Bird; Garrett Guidry; Sean Hicks; Meghan Shipp*; Megan Spicer*; Nathalie Spicer.

Grade 10 - Kevin Alford; Lauren Broussard*; Natasha Ducote; Kelsey Helmer*; Kaitlyn Hicks; Lauren Johnson*; Jacob Poole*; Allyson Sanner; Shelby Seay; Loribeth Shove*; Chandelle Toups.

Grade 11 - Kayla Backlund; Joseph LeJuine*; Kayla Sanner; Christopher Spice; Dillon Thibodeaux.

Grade 12 - Annie Alexander; Erica Austin; Tabitha Deville*; Kristin Gallegos; John Hebert; Natasha Hicks*; Santana Jinks*; Amber Kelly*; Kevin Orgeron*; Carolyn Rose; Haley Wright*.

(*Denotes all A's)

J. Bayou polls are moved

According to Carl Broussard, Cameron parish Clerk of Court, the Precinct 1, Johnson Bayou Polling place located at the Johnson Bayou High School Cafeteria, 6304 Gulf Beach Hwy., Johnson Bayou is being relocated to the Johnson Bayou Recreation Center (Temporary Trailer), 135 Berwick Road, Johnson Bayou.

This move was necessary due to the Tuesday, Nov. 7, 2006 Election date, which is a regular school day.

Listed below are the locations of the previously relocated polling places moved by the Cameron Parish Police Jury due to the devastation of Hurricane Rita. These polling places will be used for voting in the upcoming Parishwide Fall General Congressional Election to be held on Tuesday, Nov. 7.

Precinct 1: Johnson Bayou Recreation Center, (Temporary Trailer), 135 Berwick Road, Johnson Bayou.

Precincts 2, 14 & 15: Cameron Parish Emergency Operations Center, 122 Recreation Center Lane, Cameron, (behind Courthouse).

Precinct 13: Savoie Lumber Store, 153 East Creole Hwy., Creole.

Precinct 3 & 4: Hackberry Fire Station, (located in meeting room in the back portion of building), 1025 West Main Street, Hackberry.

Precinct 17: St. Eugene Catholic Church, (temporary building), 5035 Grand Chenier Hwy., Grand Chenier.

A complete listing of locations of Cameron Parish Polling Places, which will be used for voting in the upcoming Fall General Congressional Election, are located in the legal section of this publication.

S. Cameron Elementary honor roll

South Cameron Elementary school's honor and banner roll for the first six weeks ending Oct. 2 are as follows:

Grade 2 - Banner roll - Allie Bonsall, Briley Richard, Kelsey Boudreaux, Baleigh Conner and Madalyn Mudd.

Honor roll - Abby LeBouef, Gatlin Welch, Taylor Clement, Madison Fielen, Makayla LeDoux, Cadi Manuel, Zachary Godette.

Grade 3 - Banner roll - Sydnee McCall, Tristan Guidry, Garen Romero, Clarissa Gary and Austin Swire.

Honor roll - Brennan Trahan, Ross LaPoint, Baylie Duhon, Ty Little, Brooklyn Frerks, Larry LeDoux, Jacee Miltenberger, Tanner Knippers, Se'Aira Duplechian, Adam Manuel, Megan Nunez, Meike Nunez and Jeremiah Dockins.

Grade 4 - Banner roll - Trevor Bertrand, Logan Primeaux.

Honor roll - Luke Miller, Jarrett Thibodeaux, Linlee LaLande, Adam Jones, Blayne Miller, Nykki Labove, Hannah Guidry, Joy Richard, Ashlynn Miller.

Grade 5 - Banner roll - Cody Morvant.

Honor roll - Amber Guilbeau, Joshua Trahan, Andrew Bonsall, Haylee Conner, Corbet Dupont and Alex Jones.

Grade 6 - Banner roll - Jensen Bertrand, Becka Richard, Jason Theriot, Kendal Badon.

Honor roll - Jameson Picou, Savannah Baccigalopi, Joshua Wicke, Logan Broussard, Elizabeth Marcantel, Abby Miller, Daniel Peshoff, Alayna Trahan.

Grade 7 - Banner roll - Channing LaLande.

Honor roll - Taylor Canik, Myli Hay, Kypp Knippers, Chelsea Nunez, Raileigh Primeaux, Cami Richard, Mark Zamora, Branson Richard, Sydney Thomas.



FARM BUREAU INSURANCE
Auto • Home • Life

We're from Louisiana ...

We live here, shop here, go to church and enjoy life here. Just like you.

For more than 50 years, we've served the good people of our state during good times and bad. While other insurance companies have left our state, the Louisiana Farm Bureau Insurance Companies have remained faithful and loyal to you.

In the aftermath of the devastation we all experienced last year, we're making changes in how we do business ... changes that will allow us to continue to service your insurance needs.

We know Louisiana will come back stronger than ever — and we're committed to being a part of it.

Helping You is what we do best.

For details about how your Farm Bureau Insurance agent can serve you, call the Farm Bureau Insurance office below.

Your Cameron Parish Farm Bureau Insurance team {shown above — from left to right }

Wilson Lejeune, Jr., LUTCF
Agency Manager

Timothy Dupont, LUTCF
Agent

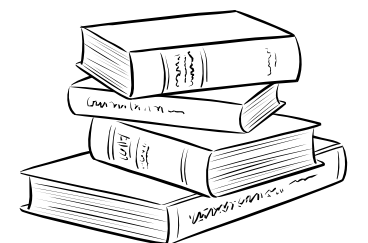
Vickie Theriot
Agent

(337) 905-4171 or (337) 905-4807

Louisiana Farm Bureau Casualty Insurance Co., Louisiana Farm Bureau Mutual Insurance Co., Southern Farm Bureau Casualty Insurance Co., Southern Farm Bureau Life Insurance Co., Jackson, MS



Broaden your horizons
READ



CATHOLIC CALENDAR.

A page devoted to local Catholic interests

October 19, 2006

Vol. 32, No. 22

Lake Charles, La.

Internet Address: <http://lcdioocese.org>

Ministries provided through Diocesan Services Appeal

LAKE CHARLES – The successful administration of each of the programs and ministries of the Diocese of Lake Charles over which Deacon Edward Lavine is responsible relies in no small part on contributions to the Diocesan Services Appeal, formerly known as the Bishop's Services Appeal.

Deacon Lavine oversees the offices of Black Catholics, Prison Ministries, the Deaf Apostolate, Counseling Services, Apostleship of the Sea, Immigration Services, and Hispanic Ministries. Without the continued support of the Catholic faithful of the Diocese many of these programs and ministries would be difficult to sustain. For more than 26 years gifts to the Appeal have made up approximately one third of the annual Diocesan budget. This year is no different save for the fact that the Appeal was not held last year due to the devastation wrought upon so many by Hurricane Rita. This year's Appeal will begin on the weekend of Nov. 4-5 in the Churches of the Diocese.

The Office of Black Catholics is taking up a large portion of Deacon Lavine's time at present as preparation begins for next year's National Black Catholic Congress X, in Buffalo, New York on July 12-15, 2007.

In anticipation of the Congress, a Day of Reflection will be held from 8:30 a.m. to 12:15 p.m. on Saturday, Dec. 9, at St. Louis Catholic High School, according to Deacon Lavine.

"We are now gearing up by bringing the past advisory board together to help me put on the Day of Reflection," Deacon Lavine said. "At present, as we prepare for the day, we will be looking at eight principles – Spirituality, Parish Life,

Youth and Young Adults, Catholic education, Social Justice, Racism, HIV/AIDS, and Africa.

"These eight principles will be reflected upon, discussed, and reviewed by the eight different discussion groups facilitated by eight different individuals," Deacon Lavine continued. "These reflections will look at the specific principle within a Sacramental vision.

"Racism will be reviewed within the Sacramental vision of Christian Initiation, Baptism, Penance and Reconciliation while Africa will be viewed within the vision of the Sacrament of Baptism, the Eucharist, Penance and Reconciliation," Deacon Lavine said. "Spirituality will come under the Sacramental vision of Confirmation;

Youth and Young adults under the vision of Confirmation and the Sacrament of Holy Orders; Catholic Education under Holy Orders, Parish Life, Matrimony; Social Justice, the Holy Eucharist and HIV/AIDS, Anointing of the Sick."

Rev. Timothy Goodly, Spirituality; Rev. Msgr. Ronald Groth, Parish Life; Dr. Kathleen Dorsey Bellow, Catholic Education; Rev. Richard Adiuoku, Africa; Judge Gene Thibodeaux, Racism; Rev. Henry Mancuso, Ph.D., Social Justice; Mrs. Milissa Thibodeaux, Youth and Young Adults; and Dr. Susan Jones, HIV/AIDS will be the facilitators for the Day of Reflection.

Deacon Lavine and a group of nine men from Sacred Heart of Jesus Parish, Immaculate Heart of Mary Parish, both in Lake Charles, and Our Lady of Perpetual Help Parish in Jennings, attended the recent National African American Catholic Men's Conference held in Houston. The Conference focused on developing spiritual and life enhancement skills that will help men live more effective and nurturing lives.

As Deacon Lavine goes out the business of preparing for next year's Congress X, he is also watching over the other ministries under his charge.

"We furnish Deacon Patrick LaPoint, director of the Seafarers Center, with Bibles from Extension Society along with other reading materials we acquire from our magazine drive each year," Deacon Lavine said. "The Rosary Makers at Our Lady of Good Counsel also provide us with rosaries for the sailors."

Bibles, rosaries, and other religious reading materials are also made available to prisoners at the jails and prisons within the Diocese. Deacon Lavine also works to provide for the celebration of Mass for minimum security inmates in Calcasieu Parish at the Calcasieu Parish Correctional Center.

"Mass is celebrated at 2 p.m. on Tuesdays and there is a Communion Service at 6:30 p.m. on Mondays," he continued. "For female inmates we offer occasional Confession and counseling services and a women's group helps with an ecumenical prayer service. A group from St. Henry Parish helps greatly with the ministry."

Father Daniel Torres, pastor of St. Joseph Church in DeRidder, makes weekly visits to the C. Paul Phelps Correctional Center in DeQuincy, according to Deacon Lavine.

In Allen Parish, at the prisons in Oakdale as well as the prison in Oberlin, Deacon Lavine has had assistance from Mike and Bonnie Richard in Elton.

"They monitor the needs in the prisons and let us know what is going on," Deacon



Attending the recent National African American Catholic Men's Conference held in Houston from the Diocese of Lake Charles were, from left, Joseph Cornerly, Willie Mouton, Craig Guillory, Michael Jones, Erroll DeVille, Deacon Edward Lavine, Derek Covert, all of Sacred Heart of Jesus Church. Kneeling is Rev. Henry Mancuso, pastor of Sacred Heart. Also attending, but not pictured, were Rev. Hyacinth Okafor, Our Lady of Perpetual Help Church in Jennings and Adam Rosemore of Immaculate Heart of Mary Church.

Lavine continued. Recently a Mass kit and vestments have been made available for priests to celebrate Liturgy for prisoners at the Oakdale Detention Center. The ministry also provides inmates with rosaries, rosary guides and other religious material.

"We have a regular schedule of priests and the laity that go into the prisons in Oakdale and Oberlin," Deacon Lavine said.

The Deacon hopes to begin a dialogue with Jefferson Davis Parish sheriff Ricky Edwards about "some of the needs in his jail."

Deacon Roy Nash of Our Lady Star of the Sea had been working with the inmates in Cameron Parish, but Hurricane Rita forced Deacon Nash to move to Kinder and the inmates were moved to Lake Charles.

Deacon Lavine's work with Immigration is to see that the priests from other countries who come to the Diocese of Lake Charles are properly documented. "We work strictly with and for the priests from other countries serving us," Deacon Lavine said. "We help with their immigration concerns. In some cases we have to help them to secure a religious visa and in others we get an extension of a

religious visa. Also we help them with permanent residency applications and citizenship questions.

Deacon Lavine pointed out that like the Black Catholic Pastoral there is also a National Pastoral Plan for Hispanic Ministry, approved by the United States Conference of Catholic Bishops in 1987.

"We have a Hispanic Commission here in the Diocese and four of us will attend a conference in New Orleans on Nov 11," Deacon Lavine said.

There are many generous people in the Local Church of Southwest Louisiana who have been generous to the Diocese of Lake Charles annual Appeal for years. Without that generosity, the programs and ministries managed by Deacon Lavine would not be able to aid as many people as they might otherwise. Please remember those people and their needs. Consider making your gift to the 2006-2007 Diocesan Services Appeal.

Ministries and Programs of the Diocese of Lake Charles

The following is a list of the programs and ministries of the Diocese of Lake Charles funded by contributions to the annual Diocesan Services Appeal.

Education and Evangelization Services

Catholic Schools
Clergy Continuing Formation
Evangelization
Religious Education
Youth Ministry
Adult Education
Communications
The Catholic Calendar
Glad Tidings TV Program
Cathedral Radio Mass

Pastoral and Community Services

Apostleship of the Sea
Counseling Services
Catholic Service Center
Child and Youth Protection
Deaf Apostolate
Family Life
Immigration Services
Pro-Life Activities
Saint Charles Center
Ecumenical Affairs
Office of Black Catholics
Hispanic Catholics
Liturgy and Worship
Tribunal
Prisons Apostolate
Vocations and Seminarians

Annulment information workshop planned

LAKE CHARLES – During this time of the change of the seasons, a workshop for persons interested in church annulments will be held on Saturday, Nov. 11, from 9 a.m. to noon in the Activity Room of the Monsignor Irving A. DeBlanc Family Life Center, located at the corner of Quilty and Monsignor Irving DeBlanc Place.

There are many misconceptions about annulments and these should be cleared up in the workshop, according to Deacon George Carr, a member of the annulment workshop team. Participants will receive information on what might be grounds for an annulment, how to complete the various forms, what supporting documents are needed and how to prepare testimony.

Persons who are divorced

or in second marriages outside the church needing annulments from throughout the diocese are welcome and encouraged to participate in this cooperative effort of Our Lady Queen of Heaven Catholic Church and the Office of Family Life of the Diocese of Lake Charles, an agency supported by contributions to the Diocesan Services Appeal.

There is no fee to participate and no preparation is needed. Advance registration is not necessary but, it would be helpful for planners to know how many persons wish to participate to allow for sufficient handouts to be available. Please call Our Lady Queen of Heaven Church at 477-1236 if you will be attending or are seeking more information.

Working with youth of Diocese important ministry

LAKE CHARLES – Working with the youth of the Catholic Church in Southwest Louisiana is an extremely important task. One which Milissa Thibodeaux, the Director of the Office of Youth Ministry for the Diocese, takes very seriously.

Without contributions to the Diocesan Services Appeal, many of the programs provided for our youth by the Office of Youth Ministry could have their effectiveness on the youth minimized. Our youth are the future of this Local Church and all the good work of the Office of Youth Ministry and the Youth Ministers in each parish of the Diocese must continue. Your gift, no matter the size, to the Diocesan Services Appeal, formerly known as the Bishop's Services Appeal, can make that happen. The Appeal this year begins on Nov. 4-5 in the Diocese.

According to Thibodeaux, "youth ministry is the developing of a program to provide young people, teens, and young adults with activities and events that promote their Catholic faith, help them know what it means to serve, help them learn leadership skills and help them develop spirituality.

"If you ask a teenager what youth ministry is, they would say 'it's something that we can do that we can have fun with our friends, we can meet new people, and we can do it in a safe and exciting environment,'" she said.

As the Director, Thibodeaux inherited a long-standing program put together through the work of Sandy Gay, who directed Religious Education and Youth Ministry activities since the establishment of the Diocese, along with steadfast volunteers.

"The Office of Youth Ministry as Sandy had it, did two major things a year, first was the Diocesan Youth Conference in Beaumont, predominantly for high school students," Thibodeaux said. "That is where all of the parishes of the diocese will be able to bring their young people and have a three-day youth ministry gathering with keynote speakers, Reconciliation, break out sessions, workshops on topics of importance to the teenagers, lots of music, some social time, some game time and it is typically held the weekend before Mardi Gras. That's the first big thing that is been part of this office for years.

"The next big thing we do is our weeklong Christian Leadership Institute held at Bundick's Lake," she said. "We have been holding that for many years. It developed from a program done on a national basis and Sandy and a group of young people adapted it for our Diocese."

The weeklong camp provides teenagers with the opportunity to learn leadership skills, learn how to work with a



Youth at CLI working on skill-building

group, how to do team building exercises, how to do problem solving and conflict resolution.

"They are taught a planning process, from how to plan a morning prayer to how to plan environment for meals, how to plan for liturgy," Thibodeaux said. "They go through this planning process throughout the week. All of it is done through a Christian basis. The entire leadership camp is done that way."

While those events have continued this year under her leadership, "We have adapted a new plan for this year," she said. "Since this is my first year in the office, we wanted to do some things and see what works."

Her first effort, a family Catholic music festival called "Proud 2B Catholic," was very successful and has energized Thibodeaux.

"It was a phenomenal event, we had live music on two stages going on all day, with product vendors, Catholic organizations, and Catholic stores on site," she said. "We had an Adoration Chapel that was open for most of the day, with live music in there as well, 10 food booths outside, jumping things for the kids outside, breakout sessions throughout the day where different topics of youth ministry were discussed. We sold about 1500 tickets and probably, because 12 and under got in free, we had about 2000 people walk through the doors."

Not resting on their laurels, the Office has already scheduled the next Proud 2B Catholic event for September 8, 2007 and, if things fall just right it could be a coup for the Diocese of Lake Charles and Southwest Louisiana as a whole.

"Although we haven't signed a contract, we got confirmation that Tony Melendez has it on his calendar and we hope we can get the contract signed soon," Thibodeaux said. "We are still negotiating."

Perhaps the most heart-rending vision of the Nicaraguan-born Melendez who was a "thalidomide baby," born without arms because his mother was prescribed the drug to combat morning sickness during her pregnancy, was his Sept. 15, 1987 performance for Pope John Paul II, playing the song "Never Be The Same," after which the Holy Father approached the stage to kiss him in appreciation.

"We have already signed contracts with Father Stan Fortuna, known as the "rapping priest" to many of our young people, and Jesse Romero, a lay evangelist and a former kickboxer who had a conversion experience," she said. "Romero goes around and shares his story with young people and adults as well."

The Office continues to hold regular monthly events for youth, including the upcoming Youth Rocks, Agape Retreat, the Diocesan Middle School Rally.

Thibodeaux says she continues to learn and grow in her job, spending hours upon hours getting youth ministry resources together. She has put together a catalog for youth ministers and recently presented two workshops at the Diocesan Catechetical Conference.

"I want all of our parishes to know that we are all one church," she said. "If we use the resources that we have and if we use each other and help each other and encourage each other, our kids will see that and youth ministry will explode."

"I think it is important that our young people know we have a church that they are a part of and we plan things and organize things that will help them when they get in their young adult lives and that they don't go away."

Without your contributions to the Diocesan Services Appeal, to aid in the administration of the Office, the many programs offered for the youth of our Diocese could be affected. Consider making your gift to this annual Appeal this weekend.

(This page paid for by the Diocese of Lake Charles.)

CLASSIFIEDS

REAL ESTATE

GRACE ROBIDEAUX
Professional Realtor
210 South Ryan Street
Lake Charles, LA 70601
Office 337-310-5280 Ext 261;
Home 337-598-2573; Cell 337-496-1611.

•PRICE REDUCED:
Grand Lake--14 acre tract at end of Micheal Lane off Cal-Cam Line for \$199,900. South boundary has 640' m/l on Chesson Rd for 2nd access. Lots C, D, E, and F can be sold separately for \$15,000. ea. Lot G cannot be land-locked and must go with lots on either Michael or Chesson. Call ERA Moffett Realty, Inc. 337-436-6639 and ask for Grace @ 310-5280 X 261 to get a plat of land. 10/4tfc

FOR SALE: Elevated home on 1.25 acre lot in Garber Subdivision. Approximately 3 miles from Down Town Cameron. Over 3000 sq-ft of heated living. 5 Bedrooms, 3 Baths. Floor sits 15.6 feet above flood elevation. House experienced damage from Rita and needs repairs. Call with offers at (843) 402-9695 9/13 - 10/25p.

FOR SALE: Two lots in Cameron, 183 Pierre St., Drost Subdivision, \$11,000 firm. Call Charlie or Janet at (337) 558-7753. 10/5 - 10/26p.

FOR SALE: Cameron, 165 Francis Circle. 2300 sq. ft., top floor, on pilings. Exceeds FEMA regulations. Recent remodeled metal roof, vinyl, AC/heater and windows on 1 acre lot. City sewerage, water & gas. 195K Call 337-249-9026. 10/18 - 11/22p.

FOR SALE

METAL OUTLET Metal Roofing ~ Carports ~ Metal Buildings ~ Patio Cover Kits ~ C's & Z's ~ Custom Trim ~ RV & Equipment Covers ~ Metal Doors ~ Windows. 337-625-2778. 2241 E. Napoleon, Sulphur. Open Mon.-Fri. 7 am-5 pm, Sat. 7 am-12 noon. tfc.

FOR SALE: 2001 32X56 Mobile home set up in clean park in Lake Charles. 3/2 with WB fireplace, 2 living areas. Park has community pool and playground. For more info call: 337-309-0308, 337-309-0310 or 337-437-4202. 10/12 & 10/18p.

NOTICE

GIVE YOUR truck a rugged good look with a Reflex spray on truck liner. Call A-1 Coatings for more information. 533 Landry Lane, Sulphur, La. Phone: (337) 533-0043 or 263-2403. 4/26 tfc.

HELP WANTED

LABORERS & HEAVY equipment operators need for South Cameron Hospital reconstruction site. Call Gerald at 318-548-0037. 10/18 & 10/26p.

HOUSEKEEPER: References required. North Cameron Parish. P.O. Box 613, Lake Charles, La. 70602. 10/18 & 10/26p.



Lawn care slowing down; care still needed in Fall

By **DAN GILL**
LSU AgCenter
Horticulturist

Lawn care definitely changes as the weather begins to cool, and by October the growth of warm-season grasses like St. Augustine, centipede, bermuda and zoysia begins to slow down.

As a result, now is not a good time to do anything that would disrupt or damage the turf—such as filling, aerification or dethatching. Although we won't have to mow as often, continue to mow regularly to maintain proper height and make sure your mower blades are still sharp.

By mid- to late November or December, most warm-season grasses will be completely or partially dormant—although St. Augustine may not go completely dormant during mild South Louisiana winters. This dormancy is important to their ability to survive potentially severe freezes during winter.

Applying any fertilizers high in nitrogen (the first number in the three numbers that appear on the package, such as 27-3-3) now would stimulate lush fall growth and make the grass more susceptible to cold injury this winter. In the case of St. Augustine, it also would make the grass more susceptible to attack from the fungus disease called brown patch during mild fall weather.

Although you don't want to use fertilizers high in nitrogen, lawns may, however, be fertilized with winterizers that contain a high percentage of potassium at this time. The first number in the analysis of these fertilizers, which represents the percentage of nitrogen, should be zero or very small. The third number, which is the percentage of potash in the fertilizer, should be the highest—as in 0-0-20 for instance.

You may see winterizers available with substantial amounts of nitrogen in them. Do not purchase and use these! They are not suitable for our area.

Of course, unless your soil is very low in potassium, the use of winterizers generally is optional anyway.

Another thing you may want to get a jump on this time of year are the weeds. Cool-season weeds can be a nuisance in lawns. In most cases, mowing a few times during the winter and early spring tends to keep many weeds under control without the use of herbicides.

But for those of you who are more particular about the way the lawn looks—or if you have had especially bad weed problems in past winter and spring seasons—now is the time to start control efforts. The application of a pre-emergence herbicide (weed preventer) now will kill the germinating weed seeds before they come up. These herbicides prevent weed growth for several months and usually last through spring.

Just remember not to use these materials if you plan to overseed your lawn with rye.

Lawn weed killers may be sprayed on the lawn to control late-summer broadleaf weeds actively growing in the lawn now. There are many suitable formulations available which kill a wide range of weeds with a single product. Read the label directions carefully and make sure that the product you choose is appropriate to use on the type of lawn grass you have.

And since it's too late to fertilize, the use of weed-and-feed herbicide and fertilizer combinations is not recom-

mended.

Insect and disease problems also occur to lawns this time of year. Brown patch is the disease most common later as the weather cools, especially on St. Augustine. This fungus generally is most active in October, November and even early December in South Louisiana, especially during rainy periods.

Areas of grass affected by brown patch can have a yellowish or orange cast that then turns tan or brown. Spread can be rapid. Fortunately, the grass often recovers in the spring, but the disease also can kill the grass. If you decide to treat, fungicides labeled to control lawn diseases are available at your local nursery.

Another pest currently active, especially when hot, dry weather lingers into late September and October, is the chinch bug. These ant-sized insects feed by sucking the sap from the grass, causing it to dry out and die. Look closely at the blades of grass in the affected dead areas and see if they look rolled up lengthwise. Since chinch bugs kill the grass, prompt treatment is important to minimize the damage. A variety of lawn insecticides labeled to control chinch bugs are available wherever garden pesticides are sold.

If you are planning to lay new sod, do so as soon as possible. You need to have the newly laid sod down in time for it to grow roots and become established before the weather cools off too much.

Rye can be used to overseed existing lawns in October or November to extend the green color of the lawn through the winter. Remember that this also extends your lawn mowing. Annual rye or perennial rye are available, as well as blends containing perennial rye with bluegrasses and fescues. Annual rye is most commonly available and is suitable for most situations. Perennial rye and blends produce the higher-quality turf, but the seed is more expensive. Both types die when the weather gets hot and must be replanted every year.

As the weather cools down and we don't have to mow so often, we will all be happy. But don't let that change prevent you from paying attention to other things that your lawn may need over the next few months.

Get It Growing is a weekly feature on home lawn and garden topics prepared by experts in the LSU AgCenter. For more information on such topics, contact your parish LSU AgCenter Extension office or visit our Web site at www.lsuagcenter.com. A wide range of publications and a variety of other resources are available.



Fall care of Irises

By **DAN GILL**
LSU AgCenter
Horticulturist

Some of the most beautiful irises we can grow in our gardens are the hybrids of several species that grow right here in Louisiana. Called Louisiana irises, they are becoming increasingly popular in gardens all over the world.

I hope you have some of these wonderful plants growing in your garden, and if you do, now is a good time to divide them and transplant them. If you don't have any Louisiana iris, it's also a good time to purchase some and plant them.

The species called Louisiana irises are *Iris giganticaerulea*, *I. fulva*, *I. brevicaulis*, *I. nelsonii* and *I. hexagona*. Only in Louisiana do all five species occur. Since they are closely related, they will cross with one another, and crosses between the species have produced an amazing array of outstandingly beautiful hybrids that are also called Louisiana irises. Most of the Louisiana irises you find for sale will be hybrids of these species, although the species also are beautiful and worthy of use in the garden.

Louisiana irises can be divided and transplanted anytime from August through early October. Unlike most plants, Louisiana irises are at their most dormant stage in the late summer—making now the ideal time to divide them.

You might have noticed how many brown or yellow leaves are on your plants now. Even if you decide you don't need to divide them this year, it's a good idea to get in and clean out the unattractive foliage before the new growth starts in earnest. This will make the planting more attractive.

Each year Louisiana irises grow and spread—creating more rhizomes and shoots. Eventually, the plants may become crowded, which can lead to lower vigor and poor flowering. This generally occurs two to three years after the bed is planted, depending on how close they were planted to begin with and how much room they have to spread.

Clumps also may grow beyond their allotted space,

and dividing will help keep the clump the size you want and prevent the irises from taking over areas where they were not intended to grow.

The first step in dividing these plants is to use a shovel or garden fork to lift the Louisiana iris plants from the bed. Try to get as much of their root systems as possible, and do not damage the fans of new growth at the ends of the rhizomes. Put them aside in a shady area and hose them down to keep them from drying out.

Once the bed is empty, take the opportunity to improve the soil in the bed before you replant the irises. Spread a 2-inch layer of compost or other organic matter over the soil, sprinkle a light application of a general-purpose fertilizer over the area and thoroughly incorporate everything into the bed.

To divide your irises, look over the clumps carefully. You will see that young rhizomes branch off from the older rhizomes. The younger rhizomes have a fan of green leaves at their tips with roots growing out from the rhizome at the base of the leaves. Break or cut off the young rhizomes at the point where they branch off from the old rhizome. Discard the old rhizome and replant the young rhizomes.

Plant the rhizomes horizontally with the fan of foliage facing the direction you want the plant to grow. Then carefully cover all of the roots. Space the rhizomes about a foot apart. The top of the rhizome should be just below or barely show above the soil surface.

Mulch the bed about 2-inches deep and water thoroughly, and if you have any rhizomes left over, pot them to share with friends.

Should the weather become dry this fall, winter or spring, water once or twice a week to keep the plants well supplied with water. An application of fertilizer in February will keep the plants growing vigorously into the blooming season.



— NOTICE —

Cameron Parish Waterworks District No. 2 of Hackberry, LA, will be taking bids on removal/demolition of office and shop structure located at 1190 Main Street, Hackberry, LA. Interested parties may obtain details and scope of work at District #2's temporary office at 973 Main Street (across from Community Center). We reserve the right to refuse all bids. Bids will be accepted until 7:00 p.m., Thursday, November 2, 2006.

RUN: Oct. 12, 19, & 26 (0-26)

— NOTICE —

Cameron Parish Waterworks District No. 2 of Hackberry, LA, will be taking bids on removal/demolition of office and shop structure located at 1190 Main Street, Hackberry, LA. Interested parties may obtain details and scope of work at District #2's temporary office at 973 Main Street (across from Community Center). We reserve the right to refuse all bids. Bids will be accepted until 7:00 p.m., Thursday, November 2, 2006.

RUN: Oct. 12, 19, & 26 (0-26)

— MEETING CHANGE —

Johnson Bayou-Holly Beach Waterworks has changed their November meeting from Tuesday, Nov. 14 to Monday, Nov. 13. The meeting will still be held at the Johnson Bayou Baptist church at 6:00 p.m.

RUN: Oct. 19 & Nov. 2 (0-29)

— JOB AD —

The Cameron Parish School Board is accepting applications for a Sweeper (8 hrs./day) at Grand Lake School. High School diploma is preferred.

To make application contact: Mr. Duhon, Principal, Grand Lake School; Phone: 337-905-2231 or 337-905-2056.

The deadline for submitting applications is Monday, November 6, 2006, at 3 p.m.

RUN: Oct. 19, 26 & Nov. 2 (0-39)

We are an equal opportunity employer committed to diversity in the workplace. We promote a drug-free environment.

Do you want a friendly, supportive work environment? And excellent benefits? See more, do more, achieve more - are you ready to make it happen?

Part-time Tellers in Cameron, LA

You must have the following qualifications:

- HS diploma or GED
- 6+months cash handling
- Excellent Customer Service and Communication skills
- Available 8 am-6 pm M-F and 8 am-1 pm, Saturday

To apply, visit: capitalone.com/careers, Click Hourly Jobs, enter reference #16309 or #508863



Miller Livestock Markets, Inc.
Market Report

For the Sale of Oct. 14, 2006. Trading was active with a turnout of 983 Head from 199 Sellers with 79 Buyers Present. All Classes of Cattle remained fully steady.

DeQuincy (Saturday) Oct. 14 Livestock Receipts: Cattle 728, Horses 9 Hogs 115, Sheep 42, and Goats 89. **BABY CALVES:** Dairy 50¢-75¢ per HD, Beef 150¢-225¢ per HD, Roping Calves (125-200 lbs.) 1.80-2.07 per lb. **STEER & HEIFER CALVES:** 200-300 lb. Steers: 1.64-1.86 per lb., Heifers: 1.34-1.81 per lb.; 300-400 lb. Steers: 1.35-1.82 per lb., Heifers: 1.30-1.72 per lb.; 400-500 lb. Steers: 1.19-1.41 per lb., Heifers: .99-1.31 per lb.; 500-600 lb. Steers: 1.05-1.12 per lb., Heifers: .85-1.02 per lb.; 600-700 lb. Steers: .89-1.11 per lb., Heifer: .84-1.02 per lb. **CATTLE:** Cutter & Utility: .47-.50 per lb.; Canners: .44-.46 per lb.; Fat Cows: .45-.46 per lb.; Thin Cows: .32-.35 per lb.; Slaughter Bulls: .55-.62 per lb.; Feeder Bulls: .65-.69 per lb. **COW/CALF PAIRS:** 850¢-1100¢ per pair. **PREGNANCY TESTED COWS:** 650¢-900¢ per HD. **HOGS:** Choice Barrows & Gilts: .33-.36; Medium Barrow & Gilts: .29-.32; Butcher Pigs: .35-.40; Feeder Pigs: .50-.60; Sows 300-500 lbs.: .27-.34 per lb.; Boars .08-12 HORSES: .28-.37 per lb. **SHEEP & GOATS:** 30¢-175¢ per HD.

Gooseneck
TRAILER MFG. CO., INC.
"Your locally authorized dealer"

LOWEST PRICES
On Aluminum & Steel Trailers in Louisiana
GUARANTEED!!
Delivery Available-Call for Details

TOP QUALITY REPLACEMENT HEIFERS
From the DeRidder, LA area
Saturday, Nov. 4 -- 2 p.m.
(In conjunction with our Regular Sale)

75 Brafrod Tiger Striped,
75 Brangus & 50 Black Baldface
1, 2 & 3 Year Olds - Pregnancy Tested
This is a Very Nice Set of Heifers all bred to Low Birth Weight Angus Bulls

MILLER LIVESTOCK MARKETS, INC.
DeQuincy, LA • (337) 786-2995
FMI Contact - Jim Miller: (337) 515-6988 Cell
Danny Allen (337) 515-8888 Cell
Elmo Davis (337) 523-2735 Cell

NOTICE TO THE CITIZENS OF CAMERON PARISH

The Louisiana Labor Department is offering employment assistance to Cameron Parish residents affected by Hurricane Rita from 10 a.m. - 2 p.m., Thursdays at the Cameron Parish Police Jury office next door to the Cameron Courthouse. Counselors will assist residents seeking jobs, as well as employers seeking employees.

Please take advantage of this free service.

Cameron Parish Police Jury

RUN : Oct. 19 (0-42)

— JOB AD —

The Cameron Parish School Board is accepting applications for a substitute for the position of Delivery/Custodial person for the Central Office. High School diploma is preferred.

Applicant must be able to perform job duties as outlined in Job Description and able to pass the physical that is a job requirement.

To make application contact: Mr. Doug Welch, Supervisor, Cameron Parish School Board; Phone: 337-475-9167.

The deadline for submitting applications is Monday, November 6, 2006 at 3 p.m.

RUN: Oct. 19, 26 & Nov. 2 (0-38)

Becon Construction
Sabine LNG Project
Johnson Bayou, LA
Needed Immediately
Combination Welders & All Crafts

- Good Wages
- Overtime
- Per Diem
- Insurance
- 401 K
- Dental
- Training Program

Don't miss this great opportunity!
Please come by our employment office
734 North Memorial Blvd. Nederland, TX 77627
Or call now 409-724-2228
EEO/MFVH

Dedication set on Sat.

On Saturday, Oct. 21, Cameron Parish, will commemorate the restoration of its cemeteries. A year long effort has recovered and reburied nearly 300 of the 340 caskets and remains torn from the earth by Hurricane Rita, some scattered up to 30 miles away.

The event, to be held on the parish courthouse lawn, will include the dedication of a monument, the burial of a time capsule and a free shrimp boil for all who attend.

From 10 a.m. to 12:30 p.m., residents of Cameron Parish are invited to place stories, photos and small memorabilia into the time capsule. Cameron Parish school children will write stories and draw pictures depicting how the storm affected their lives.

These items will go into the time capsule along with items from public officials and those involved in the rescue/dedication effort. The dedication ceremony will start at 1:30 p.m. followed by the free shrimp boil at approximately 3:30 p.m.

"The idea for the monument and time capsule is to let future generations know what life in Cameron Parish was like before and after Hurricane Rita hit in September 2005, as well as bring closure to those affected by this terrible event," stated Jerrod Daigle, chairman of the Dedication and manager of Hixson Funeral Home in Lake Charles. Over 600 people are expected to attend and attendees are invited to bring lawn chairs.

Hebert, Hailey Quinn, Trey Duhon, Courtney Thomas, Stephanie Winkles

ACADEMIC TEAM OF EXCELLENCE

(Earning 95 and above in all subjects)

1st Grade: Gabrielle Conner, Zackary Guillot, Ranna Hebert, Cecilia Lomeli, Jordan Morgan, Madison Theriot, Jayleigh Young, Ty Taylor, Kirston Landreneau, Marlee Boudreaux, Madison Breaux, Thomas Delaney, Quincy Mudd, Gabrielle Talbot, Marlee Thomas, Marlee Boudreaux, Madison Breaux, Thomas Delaney, Quincy Mudd, Gabrielle Talbot, Karlee Thomas

2nd Grade: Mallory Dupuie, Tanner Olson

3rd Grade: Ally Thomas, Allison Ross

6th Grade: LeAnne LaRocca

9th Grade: Kevin Delaney, Heather Girlinghouse

10th Grade: Evan Guidry

11th Grade: Corey Broussard, Samantha Poole

12th Grade: Sara Taylor, Haylee Theriot

ACADEMIC TEAM OF ACHIEVEMENT

(No grade lower than 90 in all subjects)

1st Grade: Dylan Bourriague, Kade Delcambre, Destiny Doxey, Kolby Richard, Megan Latiolais, Tyler Hebert, Alayna Ewing, Carlissa Eagleson, Lauren Boudoin, Andrew Ferguson, Elise LeBlanc, Emily Poole, Bryce Toerner, Seth Trahan, Garrett Vedder

2nd Grade: Alexis Reeves, Cameron Granger, Brennan Abadie, Katelynn Granger, Kamryn Trahan, John Fruge, Taylor Pascale, Steven Corbello

3rd Grade: Alyssa Walker, Cole Verrett, Zachary Brasseaux, Cavan Duhon, Nathan Thomas, Darien Boudreaux, J.C. Drounette

4th Grade: Cloie Broussard

5th Grade: Grant Robideaux, Dillon Hays

6th Grade: Lexi Conner, Emileigh Creel, Blake Ezell, Josh Fitkin, Cadie Hoffpauir, Alexandra Kennedy, Kourtney Olsen, Morgan Fontenot, Julianne Lannin, Darbi Montie, Andrew Ogea

7th Grade: Shelby Thomas, Paige Vedder

9th Grade: Tasha Fontenot

10th Grade: Taylor Beard, Jayce Hebert, Shawnie Mock, Megan Poole, Kaylyn Shaw

11th Grade: Jacqueline Babineaux, Brittany Hebert, Lucas Hebert, Rachel Jones, Molly Precht, Renn Savoie, Amber Taylor, Ashley Toups

12th Grade: Baret Bercier, Sabrina McFarlain, Kory Dahlen, Aaron Doxey, Wesley Doxey, Justin Howerton, Jordan Precht, Elizabeth Reon



Grand Lake High lists its honor students

Grand Lake School's first Six Weeks Banner Roll/Honor Roll is as follows:

BANNER ROLL

1st Grade: Dylan Bourriague, Gabrielle Conner, Kade Delcambre, Destiny Doxey, Zackary Guillot, Ranna Hebert, Cecilia Lomeli, Jordan Morgan, Kolby Richard, Madison Theriot, Lauren Boudoin, Carlissa Eagleson, Alayna Ewing, Tyler Hebert, Kirston Landreneau, Megan Latiolais, Ty Taylor, Jayleigh Young, Madison Breaux, Thomas Delaney, Andrew Ferguson, Elise LeBlanc, Quincy Mudd, Emily Poole, Gabrielle Talbot, Karlee Thomas, Bryce Toerner, Seth Trahan, Garrett Vedder, Marlee Boudreaux

2nd Grade: Cameron Granger, Mallory Dupuie, Alexis Reeves, Brennan Abadie, Katelynn Granger, Kamryn Trahan, John Fruge, Tanner Olson, Taylor Pascale

3rd Grade: Alyssa Walker, Ally Thomas, Cole Verrett, Zachary Brasseaux, Cavan Duhon, Nathan Thomas, Darien Boudreaux, J.C. Drounette

4th Grade: Cloie Broussard

5th Grade: Grant

HONOR ROLL

1st Grade: Emily Beaudaux, Seth Jinks, Tyler Morgan, Elizabeth Reed, Austin Trahan, Matthew Brasseaux, Maeleigh Conner, Ethan Fruge, Jed Guilbeaux, Yasury Lozoya, Brenlyee Meaux, Callie Fontenot, Kayla Whetstone

2nd Grade: Lakyn Duhon, Cadence Landry, Kayle Quibodeaux, Marissa Dupont, Jonathan Fitkin, Hunter Smith, Kameron Montie, Tori Smith, Hagyn Miller, Alanah Theriot, Chuck Babineaux, Keighan Faulk, Emily Fontenot, Hunter Foreman, Joel Alexander, Keagan Conner, Steven Corbello, Annabeth Robideaux

3rd Grade: Christian Bourriague, Kayla Delaney, Devon Pesson, Morgan Quinn, Kaycee Richard, Tate Savoie, Lennis Smith, Adriano Theriot, Cierra Theriot, William Veronie, Joseph Broussard, Devan Coffey, Christian Doucet, Leigh Anne Gwatney, Anica Logan, Zoe Perkins, Brandt Sonnier, Jennifer Tolbert, Samantha Boudreaux, Madisen Conner, Ross Dahlen, Kyle Delcambre, Dylan Duhon, Tyler Laverne, Madison LeJeune, Andrew Moss, Bailey Vedder

4th Grade: Katie Deshotel, Gabrielle Laverne, Audrey Harris, Lynsey Mhire, Kinnon Vincent, Kyndal Berkeley, Destiny Kebodeaux, Peyton Lannin, Kerrigan Meaux, David Miller, Stephen Poole, Brycen Savoie, Sheridan Smith

5th Grade: Lacey Boudreaux, Andres, Jasso, Jarrett Nunez, Halee Sullivan, Tyler Nunez, Cheyenne Theriot, Kayleigh Landry, Zane Bellon, Timothy Foreman, Julia Garbe, Sara Richard, Victoria Thomas

6th Grade: Katelyn Babineaux, Calley Conner, Bethanne Delaney, Blair Derouen, Elizabeth Gwatney, Marlie Mudd, Lance Thomas, Dalton Boudreaux, Justin Demary, Kent Doxey, Bobby Honeycutt, Paige Landreneau, Rebecca Monceaux, Marlie Mudd

7th Grade: Chanler Borel, Halie Stevens, Haley Davis, Jillian Davis, Kelsey Ellender, Colleen Manuel, Courtney Gaspard, Emmeline Richard

8th Grade: Lance Beard, Caleb Conner, Jaide Landreneau, Katherine LeDoux, Kallan Mudd, Daniel Collins, Julia Quinn, Tyler Tolbert

9th Grade: Amy Blanchard, Aaron Byers, Ethan Choates, Devin Dubard, Kaylee Gauthreaux, Danah Landreneau, Deaven Landreneau, Tyler Lannin, Colton LaRocca, Laken Miller, Haley Miranda, Shawnee Pearce, William Precht, Micah Richard, Samuel Richard, Laikin Rougeau, Kirstyn Vincent, Kody Willis, Jedediah Williams

10th Grade: Justin Aguiard, Lacey Broussard, Jennifer Dowden, Liz Kingham, Linsey LaGrange, Kat Kingham, Dylan Morgan, LaRayne Picou, Victoria Roach

11th Grade: Cody Benoit, Brandy Carroll, Lakeyn Duhon, Maggie Fruge, John Guidry, Brett Griffith, Sonya Laverne, Ryan Monceaux, Haley Pesson, Kayla Savoie

12th Grade: Joseph Boudreaux, Stephanie Cheramie, Miranda Ogea, Jacob Ross Conner, Melissa Dawsey, Shaley Gossett, Jennifer Gothreaux, Trent

REVISED ADVERTISEMENT FOR BIDS

Sealed proposals for the construction of the following project will be received by the Cameron Parish Gravity Drainage District 3 until **2:00 PM on 21 October 2006** in the temporary building near the Cameron Recreation Center behind the Cameron Courthouse, Cameron, LA.

Project Number: 2006-03 Post-Rita Restoration of Bolo Pump Station

The rules and regulations for the State Licensing Board for contractors will apply, the project being classified as:

1. Building Construction. Proposal forms will not be issued later than 24 hours prior to the hour and date set for receiving proposals. Every bid submitted shall be accompanied by a certified check or bid bond in the amount of 5% of the bid and shall be made payable to the Cameron Parish Gravity Drainage District 3.

Full information and proposal forms are available at the office of Lonnie G. Harper & Associates, Inc., Post Office Box 229, Grand Chenier, Louisiana 70643-0229, (337) 538-2574. Plans and specifications may be inspected upon deposit of \$50.00 per set. Bids must be submitted on proposal forms provided by the engineer. Official action will be taken at the regularly scheduled Cameron Parish Gravity Drainage District 3 meeting. The Cameron Parish Gravity Drainage District 3 reserves the right to reject any or all of the proposals and to waive informalities.

Cameron Parish Gravity Drainage District 3
/s/ Scott Henry
RUN: Oct. 19, 26, Nov. 1, 9 (O-32)

PUBLIC NOTICE

Notice is hereby given that Gulfport Energy Corporation has applied for a permit to install and maintain a 6-inch, 4,818-foot pipeline and a 6-inch, 5,943-foot pipeline for serving an existing production barge to structures in East Hackberry Field, approximately 2.1 miles east of Hackberry, Louisiana in Cameron Parish. The applicant is applying to the Louisiana Department of Environmental Quality, Office of Environmental Services for a Water Quality Certification in accordance with statutory authority contained in the LAC 33:IX.1507.A-E and provisions of Section 401 of the Clean Water Act.

Comments concerning this application can be filed with the Registrations and Certifications Section within ten days of this notice by referencing JP 061011-01/AI 88437 to the following address: Louisiana Department of Environmental Quality, P.O. Box 4313, Baton Rouge, LA 70821-4313. Attn: Water Quality Certifications.

A copy of the application is available for inspection and review at the LDEQ Public Records Center, on the first floor of the Galvez Building, Room 127 at 602 North Fifth Street, Baton Rouge, LA 70802 from 8:00 a.m. to 4:30 p.m.
RUN: Oct. 19 (O-33)

MINUTES

Minutes of the Regular Meeting of the Cameron Parish Gravity Drainage District No. 3 held on Wednesday, July 19, 2006, at 2:30 p.m. behind the Cameron Courthouse in temporary building near the Cameron Recreation Center, Cameron, LA.

Members Present: Scott Henry, Edward Racca, Jr., Joe Dupont, Mike Johnson, and Coy Mudd.

Members Absent: None. Others Present: Rusty Welch and Charles Starkovich with NRCS.

A motion was made by Edward Racca, Jr. seconded by Mike Johnson, and unanimously carried to approve the minutes of the June 20, 2006, regular meeting as written.

There was some discussion regarding moving some funds to Capital One Bank. Edward Racca, Jr., reported that all certificates of Deposit at Cameron State Bank are entirely secured. A motion was made by Joe Dupont, seconded by Mike Johnson, and unanimously carried to authorize Secretary-Treasurer Edward Racca, Jr. to invest in a \$100,000 Certificate of Deposit with Capital One.

Some discussion was held regarding FEMA reimbursements that have not been received. It was reported that all our Project Worksheets have been obligated by FEMA; the hold-up is with the State grant writers. Rusty Welch has talked with the consultant for the State, James Lee Witt & Company, about the projects and payments, and he explained the status to the Board.

Rusty Welch reported that 11 NRCS projects have been okayed by other agencies, and project contractors should have site showings within 14 to 24 days. All 7 Gravity Drainage District No. 3 projects have been pre-approved.

Charles Starkovich was recognized, and he discussed funding procedures for our 7 current projects. Debris on the Redman Lateral was also discussed, and it is recommended to be validated by NRCS as a new project.

It was acknowledged that we need to be sure we have rights-of-way on all Gravity Drainage District No. 3 projects. Some new rights-of-way may need to be signed, and Scott Henry has talked with Barbara Lou LeBlanc about securing any necessary rights-of-way that we do not have.

There was some discussion regarding Corps of Engineers contracts on Calcasieu Ship Channel and Calcasieu Pass. These contracts will not pertain to the Cameron-Creole Watershed Levee. NRCS has confirmed that the Department of Natural Resources is still the lead agency on the Cameron-Creole Watershed Levee Project.

LEGAL NOTICES

LEGAL NOTICE

This is to advise that the Cameron Parish Police Jury meeting in regular session convened on the 5th day of September, 2006 has accepted as complete and satisfactory the work performed as Project Number AA2006: Parish Road No. 444, Sweetlake Camp Road pursuant to the certain contract between Asphalt Associates, Inc. and said Cameron Parish Police Jury under File No. 298512, in the book of Mortgages, Cameron, Louisiana.

NOTICE IS HEREBY GIVEN that any person or persons having claims arising out of the furnishing of labor, supplies, material, etc., in the construction of the said work should file said claim with the Clerk of Court of Cameron Parish, Louisiana on or before forty-five (45) days after the first publication here of, all in the manner and form as prescribed by law. After the elapse of said time, the Cameron Parish Police Jury will pay all sums in the absence of any such claims or liens.

BY:

/s/Bonnie W. Conner
BONNIE W. CONNER,
SECRETARY
RUNS: Sept. 14-28, Oct. 5-26 S-17

PUBLIC NOTICE

This is to advise that the Cameron Parish Police Jury intends to abandon the following described Road Right-of-Way being of no further use or necessity:

Parish Road No. 3179 located in Section 21, Township 14 South, Range 8 West (Creole). Said road is approximately 580' in length and known as Malcolm Road.

Anyone having any objections to said abandonment should make their objections known at the meeting of the Cameron Parish Police Jury, to be held Monday, November 6, 2006 at 6:00 P.M. in the Cameron Courthouse in Cameron, Louisiana.

/s/ Bonnie W. Conner
BONNIE W. CONNER,
SECRETARY
CAMERON PARISH POLICE JURY
RUN: Oct. 5, 12, 19, 26 (O 16)

PUBLIC NOTICE

This is to advise that the Cameron Parish Police Jury intends to abandon the following described Road Right-of-Way being of no further use or necessity:

Parish Road No. 368 located in Section 21, Township 14 South, Range 7 West (East Creole). Said road is approximately 396' in length.

Anyone having any objections to said abandonment should make their objections known at the meeting of the Cameron Parish Police Jury, to be held Monday, November 6, 2006 at 6:00 P.M. in the Cameron Courtroom in Cameron, Louisiana.

/s/ Bonnie W. Conner
BONNIE W. CONNER,
SECRETARY
CAMERON PARISH POLICE JURY
RUN: Oct. 5, 12, 19, 26, - O 17

ADVERTISEMENT FOR BIDS

Sealed bids will be received for the State of Louisiana by the Division of Administration, Office of Facility Planning and Control, Claiborne Office Building, 1201 North Third Street, Conference Room 1-145 (South Entrance 1st Floor-1st door on the right), Post Office Box 94095, Baton Rouge, Louisiana 70804-9095, until 2:00 p.m., **Tuesday, November 21, 2006.**

ANY PERSON REQUIRING SPECIAL ACCOMMODATIONS SHALL NOTIFY FACILITY PLANNING AND CONTROL OF THE TYPE(S) OF ACCOMMODATION REQUIRED NOT LESS THAN SEVEN (7) DAYS BEFORE THE BID OPENING.

FOR: **Statewide Roof Repairs, District 3 - Phase 5, Statewide, Louisiana.**

PROJECT NUMBER: **01-107-94B-11, Part GT**

Complete Bidding Documents may be obtained from: **Houston J. Lirette, Jr., APAC, 6014 West Main Street, Houma, LA 70360, 985-851-1484**

upon deposit of **\$60.00** for each set of documents. Deposit on the first two sets are fully refundable to all bonafide prime Bidders upon return of the documents, in good condition, no later than ten (10) days after receipt of bids. Fifty percent (50%) of the deposit of all other sets of documents will be refunded upon return of documents as state above.

All bids must be accompanied by bid security equal to five percent (5%) of the sum of the base bid and all alternates, and must be in the form of a certified check, cashier's check or Facility Planning and Control Bid Bond Form written by a surety company licensed to do business in Louisiana, signed by the surety's agency or attorney-in-fact. Surety must be listed on the current U. S. Department of the Treasury Financial Management Service list of approved bonding companies as approved for an amount equal to or greater than the amount for which it obligates itself in the Bond, or must be a Louisiana domiciled insurance company with at least an A- rating in the latest printing of the A.M. Best's Key Rating Guide. If surety qualifies by virtue of its Best's listing, the amount of the bond may not exceed ten percent (10%) of policyholders' surplus as shown in the latest A.M. Best's Key Rating Guide. The Bid Bond shall be in favor of the State of Louisiana, Office of Facility Planning and Control, and shall be accompanied by appropriate power of attorney. No Bid Bond indicating an obligation of less than five percent (5%) by any method is acceptable.

The successful Bidder shall be required to furnish a Performance and Payment Bond written by a company licensed to do business in Louisiana, in an amount equal to 100% of the Contract amount. Surety must be listed currently on the U. S. Department of Treasury Financial Management Service List (Treasury List) as approved for an amount equal to or greater than the contract amount, or must be an insurance company domiciled in Louisiana or owned by Louisiana residents. If surety is qualified other than by listing on the treasury list, the contract amount may not exceed fifteen percent of policyholders' surplus as shown by surety's most recent financial statements filed with the Louisiana Department of Insurance and may not exceed the amount of \$500,000. However, a Louisiana domiciled insurance company with at least an A- rating in the latest printing of the A. M. Best's Key Rating Guide shall not be subject to the \$500,000 limitation, provided that the contract amount does not exceed ten percent of policyholders' surplus as shown in the latest A.M. Best's Key Rating Guide nor fifteen percent of policyholders' surplus as shown by surety's most recent financial statements filed with the Louisiana Department of Insurance. The Bond shall be signed by the surety's agent or attorney-in-fact.

A PRE-BID CONFERENCE WILL BE HELD at 2:00 p.m. on Monday November 6, 2006 at the Claiborne State Office Building, Conference Room 7-152, 1201 N 3rd Street, Baton Rouge, LA.

Bids shall be accepted from Contractors who are licensed under LA. R.S. 37:2150-2163 for classification of **Roofing and Sheet Metal, Siding**. Bidder is required to comply with provisions and requirements of LA. R.S. 38:2212(A)(1)(c). No bid may be withdrawn for a period of thirty (30) days after receipt of bids, except under the provisions of LA. R.S. 38:2214.

The Owner reserves the right to reject any and all bids for just cause. In accordance with La. R.S. 38:2212(A)(1)(b), the provisions and requirements of this Section, those stated in the advertisement for bids, and those required on the bid form shall not be considered as informalities and shall not be waived by any public entity.

When this project is financed either partially or entirely with State Bonds, the award of this Contract is contingent upon the granting of lines of credit, or the sale of bonds by the State Bond Commission. The State shall incur no obligation to the contractor until the Contract Between Owner and Contractor is fully executed.

STATE OF LOUISIANA DIVISION OF ADMINISTRATION FACILITY PLANNING AND CONTROL JERRY W. JONES, DIRECTOR
RUNS: Oct. 19, 26, Nov. 3 - O 25

PUBLIC NOTICE

Sealed bids will be received by Cameron Parish Police Jury until 1:30 p.m., Thursday October 26, 2006 in the Police Jury Administrative Office, 10080 Gulf Highway, Grand Lake, Louisiana, for the sale of one (1) used 1994 655D 2 WD Backhoe, as is, where is. All bids must be submitted on bid forms which may be obtained from the Police Jury Administrative Office by calling (337)905-1189.

By: /s/Bonnie W. Conner
BONNIE W. CONNER,
SECRETARY
RUNS: Oct. 12, 19, 26 - O 27

NOTICE OF POLLING PLACES

According to Carl Broussard, Clerk of Court of Cameron Parish in accordance with Title 18:535B of the Louisiana Election Code, the following is the official listing of the Polling Places for the upcoming Fall Congressional Election to be held on Tuesday, November 7, 2006.

POLLING PLACES
Precinct 1: location: Johnson Bayou Recreation Center (IN TEMPORARY TRAILER) 135 Berwick Lane, Johnson Bayou, La.

Precinct 2: location: Cameron Parish Emergency Operations Center, 122 Recreation Center Lane, Cameron, La. (BEHIND COURTHOUSE)

Precinct 3: location: Hackberry Fire Station, 1025 West Main Street, Hackberry, La.

Precinct 4: location: Hackberry Fire Station, 1025 West Main Street, Hackberry, La.

Precinct 5: location: Grand Lake Recreation Center, 108 Recreation Lane, Grand Lake, La.

Precinct 8: location: Lowry Fire Station, 460 Lowry Hwy., Lowry, La.

Precinct 9: location: Klondike Community Center, Veterans Memorial Drive, Klondike, La.

Precinct 12: location: Muria Fire Station, 129 Muria Road, Creole, La.

Precinct 13: location: Savoie Lumber Store, 153 East Creole Hwy., Creole, La.

Precinct 14: location: Cameron Parish Emergency Operations Center, 122 Recreation Center Lane, Cameron, La. (BEHIND COURTHOUSE)

Precinct 15: location: Cameron Parish Emergency Operations Center, 122 Recreation Center Lane, Cameron, La. (BEHIND COURTHOUSE)

Precinct 16: location: Grand Lake Recreation Center, 108 Recreation Lane, Grand Lake, La.

Precinct 17: location: St. Eugene Catholic Church, 5035 Grand Chenier Hwy., Grand Chenier, La.

Precinct 16: location: Grand Lake Recreation Center, 108 Recreation Lane, Grand Lake, La.
RUNS: Oct. 19, 26, Nov. 2 - O 30

Page 10, The Cameron Parish Pilot, Cameron, La., October 19, 2006

NOTICE OF PUBLICATION OFFICE OF MINERAL RESOURCES ON BEHALF OF THE STATE MINERAL BOARD FOR THE STATE OF LOUISIANA BATON ROUGE, LOUISIANA 70821

By virtue of and in conformity with the provisions of Sub-part A of Chapter 2, Title 30 of the Louisiana Revised Statutes of 1950, as amended, and other applicable laws, sealed bids will be received in the Office of Mineral Resources, LaSalle Office Building, Baton Rouge, Louisiana (P. O. Box 2827, Baton Rouge, LA 70821) on or before **12:00 noon on Tuesday, November 7, 2006** for a lease to explore, drill for and produce oil, gas and any other liquid or gaseous minerals in solution and produced with oil or gas on the following described tracts (**Tract Nos. 38642 through 38734, inclusive**) to be opened publicly **Wednesday, November 8, 2006** in the LaSalle Office Building, 617 N. 3rd Street, Capitol Complex, Baton Rouge, Louisiana.

All bids shall offer a **"Cash Payment"** bonus, as set forth on the authorized bid form, for a lease having a primary term in conformity with whether said lease is an **inland offshore** lease and the said bonus shall maintain the lease in full force and effect for the first year. If the bid offers an **ANNUAL DELAY RENTAL**, which is mandatory for leases with terms of more than one (1) year, it shall not be for less than **one-half (1/2)** of the Cash Payment bonus bid and any bids containing an annual delay rental of less than one-half (1/2) of the Cash Payment bonus will be increased to the one-half (1/2) amount. Any lease granted shall be without warranty or any recourse whatsoever, either express or implied, against Lessor with regard to questions of title, not even if returned by Lessor or any payments received under the lease or being otherwise responsible therefor to Lessee. Under LSA - R. S. 30:127, the **Minimum Royalty** bid cannot be less than **one-eighth (1/8) of all oil, gas or other liquid or gaseous minerals in solution and produced with oil or gas** and saved or utilized. **Rights to geothermal resources, free sulphur, potash, lignite, salt and other solid minerals are to be excluded from any oil or gas mineral lease and any bid purporting to include those rights will be disregarded as to the extent of those rights only.** All bidders are notified that the Mineral Board does not obligate itself to accept any bid, and that acceptance is at the sole discretion of the Mineral Board which reserves the right to reject any and all bids or to grant a lease on any portion of the lease and to withdraw the remainder of the tract.

Act 8 of the 2000 Second Extraordinary Legislative Session established two additional fees to be collected from mineral lessees on all mineral leases awarded. **An additional fee of \$15 per acre will be collected and deposited into the Louisiana State Mineral Board Conservation Fund. An additional fee of \$5 per acre will be collected and deposited into the Oil and Gas Regulatory Fund.** A separate check in the amount of \$20 per acre made payable to the Office of Mineral Resources shall be submitted, either accompanying the original bid (inside the sealed bid envelope) or mailed to the Office of Mineral Resources for receipt within ten (10) days after the bid is opened and the lease is awarded. Bidders may use a regular check for payment of the fees. The successful bidder will not receive the lease executed by the State Mineral Board until the fees are received.

All leases awarded shall be executed upon terms and conditions provided in the current State lease form with all applications appended thereto, a copy of which is available for review in the Office of Mineral Resources, Petroleum Lands Division, Leasing Section.

Certified check, cashier's check or bank money order payable to the **OFFICE OF MINERAL RESOURCES** for the full amount of the aforesaid Cash Payment bonus shall be submitted with and accompany each bid and, once submitted, may be thereafter withdrawn or canceled. Once the bid is opened and accepted by the Mineral Board, the accompanying checks or money order shall be negotiated by the Office of Mineral Resources and the proceeds disbursed in the manner required by law.

SPECIAL NOTE: Act 449 of the 2005 Regular Session of the Louisiana Legislature requires that a prospective lease holder for a State mineral lease be registered with the Office of Mineral Resources. Registration with the Office of Mineral Resources consists of filling out the Prospective Leaseholder form and supplying this office with a certificate from the Secretary of State for the State of Louisiana attesting that the prospective leaseholder is in good standing as authorized to do business in the State of Louisiana. **UNDERSTAND** that being registered for nomination or any other purpose **DOES NOT CONSTITUTE REGISTRATION AS A PROSPECTIVE LEASEHOLDER.** Act 449 specifically states that, **"Only those bidders who are registered prospective leaseholders with the office of mineral resources shall be allowed to bid on tracts for the purpose of obtaining a mineral lease from the state of Louisiana."** If an entity plans to submit a bid on a tract at any State mineral lease sale, that bid **WILL NOT** be accepted unless the bidding entity was properly registered with the Office of Mineral Resources prior to the lease sale at which its bid was submitted. **THERE WILL BE NO EXCEPTIONS TO THIS REQUIREMENT!!!**

Under rules promulgated by the Department of Natural Resources in accordance with authority granted by Act 106 of the First Extraordinary Session of the Louisiana Legislature of 2002, a **fee equal to ten percent (10%) of the Cash Payment bonus** bid is required to be submitted by separate check, either accompanying the original bid (inside the sealed bid envelope) or mailed to the Office of Mineral Resources for receipt within ten (10) days after the bid is accepted and the lease is awarded. Bidders may use a regular check for the 10% fee. The successful bidder will not receive the lease executed by the State Mineral Board until the fee is received. If the fee check accompanies the bid in the sealed envelope and the bidder is unsuccessful, both the fee check and the Cash Payment bonus check will be returned to the unsuccessful bidder.

The successful bidder to whom the lease is awarded who receives the written lease executed by the State Mineral Board shall return the written lease, duly executed by Lessee (all named Lessees on the lease instrument), within **TWENTY (20) DAYS** of receipt of same under penalty for failure to do so of forfeiture of the lease, including the Cash Payment bonus and fee tendered and negotiated.

Bids may be for the whole or any particular described portion of the land advertised, but consistent with the Board policy. All bidders are notified that bids on portions of tracts shall be described by metes and bounds and be accompanied by a transparent plat outlining thereon the portion bid upon. The scale of the transparent plat shall be the same as the scale of the **OFFICIAL PLAT (NOT THE F & A PLAT) CONTAINED HEREIN** and should identify the Point of Beginning with X and Y coordinates (if applicable), the Section, Township and Range, the Block No. (if offshore), the Parish, any adjacent existing State Mineral Leases, and, further, should clearly show the entire tract boundaries in relationship to the portion bid upon. It shall also show the Topographic features (Land and Water) of the area in detail similar to the Official Plat contained herein.

Failure to follow these guidelines in submitting a portion bid may result in outright rejection of the portion bid by the State Mineral Board at its sole discretion.

Notice is given that the State Mineral Board will include provisions in the lease to insure applicable payments attributable to the lease property without regard to adverse title claims, disputes, litigation or title failure and the language of those provisions is available to any interested party at the Office of Mineral Resources. Prospective bidders should carefully examine the same prior to submitting any bid.

Some tracts available for leasing may be situated in the Louisiana Coastal Zone as defined in Act 361 of the Regular Session of the Louisiana Legislature of 1978 (promulgated as LSA-R. S. 49:213) and may be subject to the guidelines and regulations promulgated by the Coastal Management Section of the Department of Natural Resources for operations in the Coastal Zone.

NOTE: All bids shall specify the Cash Payment bonus for leases as a price per acre amount and an aggregate total amount. For purposes of rental and deferred development payments, the price per acre amount set forth in the bid, when multiplied by the appropriate acreage, shall determine the full value of rental or deferred development payments to be made. If there are any discrepancies between the total State acreage specified in a lease and the actual State acreage within the geographical boundary of the lease tract, nevertheless, the price per acre specified in the bid for a lease shall be multiplied by the appropriate State acreage within the geographical boundary of the lease tract to compute rental or deferred development payments.

NOTE: Multiple portion bids on the same tract may be accepted by the State Mineral Board, even though they overlap. In the case of overlapping portion bids on the same tract, each of which is otherwise acceptable to the State, the State Mineral Board will indicate which one of the multiple bids on the same tract is most acceptable, considering the royalty, per acre cash payment, bonus, any additional consideration and what, in the sole discretion of the Mineral Board, is in the best interest of the State, and that bid (referred to as "Bid A") will be given priority in having a lease issued thereon. The bid that is also indicated as the acceptable of other portion bids on the same tract, if any, in the order of their acceptance (referred to respectively as "Bid B", "Bid C", etc.). Once the plat of "Bid A" 's portion has been rendered as accurately as possible, "Bid B" will be contacted and given an option to take a lease on the remaining portion of his portion bid acreage not overlapping "Bid A". If "Bid B" is not accepted, "Bid C" will be contacted and given an option to take a lease on the remaining portion of his portion bid acreage not overlapping "Bid A" and "Bid B".

OFFSHORE TRACT (Tract Nos. 38642 through 38654 inclusive, herein) are the tracts which lie seaward of the Louisiana shoreline, as hereinafter defined, but landward of the survey line lying three nautical miles from the Louisiana shoreline, all as determined by the Report of the Special Master in the litigation in the Supreme Court of the United States styled United States v. State of Louisiana, et al. No. 9 Original, set out in the June 1975, Decree of the said Supreme Court. All bids on offshore tracts cannot specify a lease primary term exceeding **five (5) years**. Bids that specify a primary term exceeding five (5) years for an offshore tract may be rejected outright or the primary term changed to five (5) years at the sole discretion of the State Mineral Board.

TRACT 38642 - Portion of Block 20, East Cameron Area, Revised, and Block 1, Vermilion Area, Revised, Cameron and Vermilion Parishes, Louisiana

The beds and bottoms of all water bodies belonging to the State of Louisiana located in Block 20, East Cameron Area, Revised, and Block 1, Vermilion Area, Revised, together with any present lands formed by accretion to the shoreline or islands formed therein, located in Cameron and Vermilion Parishes, Louisiana, owned by and not presently under mineral lease as of November 8, 2006, from the State of Louisiana, the geographical area of which is more fully described as follows: Beginning at a Point having Coordinates of X = 1,596,555.78 and Y = 325,433.93; Thence West 11,246.07 feet to a point having Coordinates of X = 1,585,309.71 and Y = 325,433.93; Thence North approximately 10,222 feet to a point on the Louisiana Coastline; Thence along said Louisiana Coastline the following courses: South 73 degrees 29 minutes 19 seconds East 1,533.53 feet to a point having Coordinates of X = 1,586,780.00 and Y = 333,220.00, South 75 degrees 27 minutes 43 seconds East 2,768.65 feet to a point having Coordinates of X = 1,589,460.00 and Y = 334,525.00, South 71 degrees 36 minutes 13 seconds East 2,344.83 feet to a point having Coordinates of X = 1,591,685.00 and Y = 333,785.00, South 78 degrees 41 minutes 24 seconds East 1,351.24 feet to a point having Coordinates of X = 1,593,010.00 and Y = 333,520.00, North 82 degrees 05 minutes 34 seconds East 908.64 feet to a point having Coordinates of X = 1,593,910.00 and Y = 333,645.00, South 24 degrees 55 minutes 43 seconds East 391.47 feet to a point having Coordinates of X = 1,594,075.00 and Y = 333,290.00, South 88 degrees 21 minutes 06 seconds East 695.29 feet to a point having Coordinates of X = 1,594,770.00 and Y = 333,270.00, South 70 degrees 45 minutes 04 seconds West 2,768.65 feet to a point having Coordinates of X = 1,593,010.00 and Y = 333,520.00, North 78 degrees 41 minutes 24 seconds West 1,351.24 feet to a point having Coordinates of X = 1,591,685.00 and Y = 333,785.00, North 72 degrees 36 minutes 13 seconds West 2,344.83 feet to a point having Coordinates of X = 1,589,460.00 and Y = 334,525.00, North 75 degrees 27 minutes 43 seconds West 2,768.65 feet to a point having Coordinates of X = 1,586,780.00 and Y = 333,220.00, and Northwesterly approximately 1,534 feet to a point having an X Coordinate of X = 1,585,309.71; Thence leaving said Louisiana Coastline North approximately 4,504.00 feet to a point having Coordinates of X = 1,593,910.00 and Y = 333,645.00, North 78 degrees 41 minutes 24 seconds West 1,351.24 feet to a point having an X Coordinate of X = 1,596,555.78; Thence along said present day shoreline southeasterly approximately 14,208.12 feet to a point having an X coordinate of X = 1,596,555.78; Thence leaving said present day shoreline South approximately 2,244 feet to a point on the Louisiana Coastline having an X Coordinate of X = 1,596,555.78; Thence along said Louisiana Coastline Northwesterly approximately 1362 feet to the point of beginning, containing approximately **813 acres**, all as more particularly outlined on a plat on file in the Office of Mineral Resources, Department of Natural Resources. All bearings, distances and coordinates are based on Louisiana Coordinate System of 1927, (North or South Zone).

NOTE: The above description of the Tract nominated for lease has been provided and corrected, where required, exclusively by the nomination party. Any mineral lease selected from this Tract and awarded by the Louisiana State Mineral Board shall be without warranty of any kind, either express, implied, or statutory, including, but not limited to, the implied warranties of merchantability and fitness for a particular purpose. Should the mineral lease awarded by the Louisiana State Mineral Board be subsequently modified, cancelled or abrogated due to the existence of conflicting leases, operating agreements, private claims or other future obligations or conditions which may affect all or any portion of the leased Tract, it shall not relieve the Lessee of the obligation to pay any bonus due thereon to the Louisiana State Mineral Board, nor shall the Louisiana State Mineral Board be obligated to refund any consideration paid by the Lessor prior to such modification, cancellation, or abrogation, including, but not limited to, bonuses, rentals and royalties.

NOTE: The State of Louisiana does hereby reserve, and this lease shall be subject to, the imprescriptible right of surface use in the nature of a servitude in favor of the Department of Natural Resources, including its Offices and Commissions, for the

sole purpose of implementing, constructing, servicing and maintaining approved coastal zone management and/or restoration projects. Utilization of any and all rights derived under this lease by the mineral lessee, its agents, successors or assigns, shall not interfere with nor hinder the reasonable surface use by the Department of Natural Resources, its Offices or Commissions, as herein above reserved.

TRACT 38645 - Portion of Block 20, East Cameron Area, Revised, and Block 1, Vermilion Area, Revised, Cameron and Vermilion Parishes, Louisiana

The beds and bottoms of all water bodies belonging to the State of Louisiana located in Block 20, East Cameron Area, Revised, and Block 1, Vermilion Area, Revised, together with any present lands formed by accretion to the shoreline or islands formed therein, located in Cameron and Vermilion Parishes, Louisiana, owned by and not presently under mineral lease as of November 8, 2006, from the State of Louisiana, the geographical area of which is more fully described as follows: Beginning at a Point having Coordinates of X = 1,596,555.78 and Y = 325,433.93; Thence South 5,869.76 feet to a point having Coordinates of X = 1,596,555.78 and Y = 319,564.17; Thence West 11,246.07 feet to a point having Coordinates of X = 1,585,309.71 and Y = 319,564.17; Thence North 5,869.76 feet to a point having Coordinates of X = 1,585,309.71 and Y = 325,433.93; Thence East 11,246.07 feet to the point of beginning, containing **1515.42 acres**, all as more particularly outlined on a plat on file in the Office of Mineral Resources, Department of Natural Resources. All bearings, distances and coordinates are based on Louisiana Coordinate System of 1927, (North or South Zone).

NOTE: The above description of the Tract nominated for lease has been provided and corrected, where required, exclusively by the nomination party. Any mineral lease selected from this Tract and awarded by the Louisiana State Mineral Board shall be without warranty of any kind, either express, implied, or statutory, including, but not limited to, the implied warranties of merchantability and fitness for a particular purpose. Should the mineral lease awarded by the Louisiana State Mineral Board be subsequently modified, cancelled or abrogated due to the existence of conflicting leases, operating agreements, private claims or other future obligations or conditions which may affect all or any portion of the leased Tract, it shall not relieve the Lessee of the obligation to pay any bonus due thereon to the Louisiana State Mineral Board, nor shall the Louisiana State Mineral Board be obligated to refund any consideration paid by the Lessor prior to such modification, cancellation, or abrogation, including, but not limited to, bonuses, rentals and royalties.

NOTE: The State of Louisiana does hereby reserve, and this lease shall be subject to, the imprescriptible right of surface use in the nature of a servitude in favor of the Department of Natural Resources, including its Offices and Commissions, for the sole purpose of implementing, constructing, servicing and maintaining approved coastal zone management and/or restoration projects. Utilization of any and all rights derived under this lease by the mineral lessee, its agents, successors or assigns, shall not interfere with nor hinder the reasonable surface use by the Department of Natural Resources, its Offices or Commissions, as herein above reserved.

INLAND TRACTS (Tract Nos. 38655 through 38709 inclusive, herein) are those tracts which lie landward of the Louisiana shoreline, as defined by the report of the Special Master in the litigation in the Supreme Court of the United States styled United States v. State of Louisiana, et al. No. 9 Original and set out in the June 1975, Decree of the said Supreme Court. All bids on inland tracts cannot specify a lease primary term exceeding **three (3) years**. Bids that specify a primary term exceeding three (3) years for an inland tract may be rejected outright or the primary term changed to three (3) years at the sole discretion of the State Mineral Board.

TRACT 38682 - Cameron and Vermilion Parishes, Louisiana

All of the lands now or formerly constituting the beds and bottoms of all water bodies of every nature and description the title of which vests in the State of Louisiana, together with any islands, shoals, reefs and other lands formed by accretion or by reliction, where allowed by law, excepting tax adjudicated lands, and not presently under mineral lease and cross hatched on November 8, 2006, situated in Cameron and Vermilion Parishes, Louisiana, and more particularly described as follows: Beginning at a point on the Louisiana Coastline having Coordinates of X = 1,595,210.00 and Y = 333,090.00; Thence along said Louisiana Coastline the following courses: North 67 degrees 45 minutes 04 seconds West 475.39 feet to a point having Coordinates of X = 1,594,770.00 and Y = 333,270.00, North 88 degrees 21 minutes 06 seconds West 695.29 feet to a point having Coordinates of X = 1,594,075.00 and Y = 333,290.00, North 70 degrees 45 minutes 04 seconds West 2,768.65 feet to a point having Coordinates of X = 1,593,910.00 and Y = 333,645.00, South 82 degrees 05 minutes 34 seconds West 908.64 feet to a point having Coordinates of X = 1,593,010.00 and Y = 333,520.00, North 78 degrees 41 minutes 24 seconds West 1,351.24 feet to a point having Coordinates of X = 1,591,685.00 and Y = 333,785.00, North 72 degrees 36 minutes 13 seconds West 2,344.83 feet to a point having Coordinates of X = 1,589,460.00 and Y = 334,525.00, North 75 degrees 27 minutes 43 seconds West 2,768.65 feet to a point having Coordinates of X = 1,586,780.00 and Y = 333,220.00, and Northwesterly approximately 1,534 feet to a point having an X Coordinate of X = 1,585,309.71; Thence leaving said Louisiana Coastline North approximately 4,504.00 feet to a point having Coordinates of X = 1,593,910.00 and Y = 333,645.00, North 78 degrees 41 minutes 24 seconds West 1,351.24 feet to a point having an X coordinate of X = 1,596,555.78; Thence leaving said present day shoreline South approximately 2,244 feet to a point on the Louisiana Coastline having an X Coordinate of X = 1,596,555.78; Thence along said Louisiana Coastline Northwesterly approximately 1362 feet to the point of beginning, containing approximately **813 acres**, all as more particularly outlined on a plat on file in the Office of Mineral Resources, Department of Natural Resources. All bearings, distances and coordinates are based on Louisiana Coordinate System of 1927, (North or South Zone), where applicable.

NOTE: The above description of the Tract nominated for lease has been provided and corrected, where required, exclusively by the nomination party. Any mineral lease selected from this Tract and awarded by the Louisiana State Mineral Board shall be without warranty of any kind, either express, implied, or statutory, including, but not limited to, the implied warranties of merchantability and fitness for a particular purpose. Should the mineral lease awarded by the Louisiana State Mineral Board be subsequently modified, cancelled or abrogated due to the existence of conflicting leases, operating agreements, private claims or other future obligations or conditions which may affect all or any portion of the leased Tract, it shall not relieve the Lessee of the obligation to pay any bonus due thereon to the Louisiana State Mineral Board, nor shall the Louisiana State Mineral Board be obligated to refund any consideration paid by the Lessor prior to such modification, cancellation, or abrogation, including, but not limited to, bonuses, rentals and royalties.

NOTE: The State of Louisiana does hereby

reserve, and this lease shall be subject to, the imprescriptible right of surface use in the nature of a servitude in favor of the Department of Natural Resources, including its Offices and Commissions, for the sole purpose of implementing, constructing, servicing and maintaining approved coastal zone management and/or restoration projects. Utilization of any and all rights derived under this lease by the mineral lessee, its agents, successors or assigns, shall not interfere with nor hinder the reasonable surface use by the Department of Natural Resources, its Offices or Commissions, as herein above reserved.

ROCKEFELLER TRACTS (Tract Nos. 38718 through 38728 inclusive, herein) ARE THOSE TRACTS IN WILDLIFE MANAGEMENT AREAS UNDER JURISDICTION OF THE DEPARTMENT OF WILDLIFE AND FISHERIES. The maximum primary term of any lease on a Wildlife Management Area under the jurisdiction of the Department of Wildlife and Fisheries shall be three (3) years and any operations conducted under the authority of a State mineral lease, including, but not limited to, the exploration, drilling, production, and marketing of hydrocarbons on any Wildlife Management area under the jurisdiction of the Department of Wildlife and Fisheries shall be limited to and governed by the rules and regulations promulgated by the said Department of Wildlife and Fisheries for each respective Wildlife Management area, copies of which rules and regulations are located at and may be obtained from the Department of Wildlife and Fisheries.

TRACT 38718 - Cameron Parish, Louisiana

A portion of all State owned lands, including high and marsh lands and land now or formerly constituting the beds and bottoms of any water body, within the boundaries of the Rockefeller Wildlife Refuge and Game Preserve, not presently under mineral lease and cross hatched by the State of Louisiana on November 8, 2006, situated in Cameron Parish, Louisiana, and described as follows: Beginning at a Point having Coordinates of X = 1,584,430.86 and Y = 358,639.94; Thence North 8,381.78 feet to a point having Coordinates of X = 1,584,430.86 and Y = 367,021.72; Thence East approximately 7,270 feet to a point on the Rockefeller Wildlife Refuge and Game Preserve boundary having a Y Coordinate of Y = 367,021.72; Thence along said Rockefeller Wildlife Refuge and Game Preserve boundary Southerly approximately 8,422 feet; Thence leaving said Rockefeller Wildlife Refuge and Game Preserve boundary Westerly approximately 7,122 feet to the point of beginning, **LESS AND EXCEPT** any portion of the above described tract which may fall outside of the boundaries of Rockefeller Wildlife Refuge and Game Preserve, containing approximately **1389 acres**, all as more particularly outlined on a plat on file in the Office of Mineral Resources, Department of Natural Resources. All bearings, distances and coordinates are based on Louisiana Coordinate System of 1927, (South Zone).

NOTE: The above description of the Tract nominated for lease has been provided and corrected, where required, exclusively by the nomination party. Any mineral lease selected from this Tract and awarded by the Louisiana State Mineral Board shall be without warranty of any kind, either express, implied, or statutory, including, but not limited to, the implied warranties of merchantability and fitness for a particular purpose. Should the mineral lease awarded by the Louisiana State Mineral Board be subsequently modified, cancelled or abrogated due to the existence of conflicting leases, operating agreements, private claims or other future obligations or conditions which may affect all or any portion of the leased Tract, it shall not relieve the Lessee of the obligation to pay any bonus due thereon to the Louisiana State Mineral Board, nor shall the Louisiana State Mineral Board be obligated to refund any consideration paid by the Lessor prior to such modification, cancellation, or abrogation, including, but not limited to, bonuses, rentals and royalties.

NOTE: The Office of Mineral Resources will require a minimum bonus of \$350 per acre and a minimum royalty of 25%.

NOTE: The mineral lease is located within the jurisdiction of the Louisiana Department of Wildlife and Fisheries which has promulgated rules and regulations for the protection of game and wildlife on the aforesaid Tract and, therefore, shall be subject to said rules and regulations, a copy of which shall be attached to the mineral lease. In addition to the specific rules and regulations applicable, the following shall apply regarding operations under this mineral lease:

1. Compliance with the Rockefeller mineral regulations shall be required.
2. No surface activities will be allowed in the vicinity of the Headquarters and associated facilities without written authorization from the Department.
3. Board road access will be required when feasible as determined by the Department.
4. In the event that board road access is not feasible, existing canals and waterways will be utilized to access proposed well locations. A maximum of 350 feet of new canal dredging will be allowed for individual well locations.
5. Compensatory mitigation will be required to offset unavoidable wetland losses.
6. No discharges will be allowed, including produced waters and drilling fluids. A containerized closed loop system will be required.
7. Seasonal restrictions may be imposed within specific management units dependent upon wildlife population levels.
8. Prior to submitting applications for wetland permits to Federal and State permitting agencies the lease holder or shall coordinate project details with the Louisiana Department of Wildlife and Fisheries, Fur and Refuge Division. Contact person for the Department will be Mike Windham at (504) 568-5886 or (225) 342-6122.

NOTE: The State of Louisiana does hereby reserve, and this lease shall be subject to, the imprescriptible right of surface use in the nature of a servitude in favor of the Department of Natural Resources, including its Offices and Commissions, for the sole purpose of implementing, constructing, servicing and maintaining approved coastal zone management and/or restoration projects. Utilization of any and all rights derived under this lease by the mineral lessee, its agents, successors or assigns, shall not interfere with nor hinder the reasonable surface use by the Department of Natural Resources, its Offices or Commissions, as herein above reserved.

TRACT 38720 - Cameron Parish, Louisiana

A portion of all State owned lands, including high and marsh lands and land now or formerly constituting the beds and bottoms of any water body, within the boundaries of the Rockefeller Wildlife Refuge and Game Preserve, not presently under mineral lease and cross hatched by the State of Louisiana on November 8, 2006, situated in Cameron Parish, Louisiana, and described as follows: Beginning at a point having Coordinates of X = 1,584,430.86 and Y = 358,639.94; Thence North 89 degrees 42 minutes 12 seconds East 7,122 feet to a point on the Rockefeller Wildlife Refuge and Game Preserve boundary; Thence Southerly along said Rockefeller Wildlife Refuge and Game Preserve boundary approximately 842 feet to a point on a corner of said boundary; Thence leaving said Rockefeller Wildlife Refuge and Game Preserve boundary Southerly approxi-

mately 2,667 feet to a point having Coordinates of X = 1,591,472.93 and Y = 355,095.07; Thence South 00 degrees 06 minutes 37 seconds East 10,741.57 feet to a point having Coordinates of X = 1,591,493.62 and Y = 344,353.52; Thence West 7,062.77 feet to a point having Coordinates of X = 1,584,430.86 and Y = 344,353.52; Thence North 14,286.42 feet to the point of beginning, **LESS AND EXCEPT** any portion of the above described tract which may fall outside of the boundaries of Rockefeller Wildlife Refuge and Game Preserve, containing approximately **2,312 acres**, all as more particularly outlined on a plat on file in the Office of Mineral Resources, Department of Natural Resources. All bearings, distances and coordinates are based on Louisiana Coordinate System of 1927, (South Zone).

NOTE: The above description of the Tract nominated for lease has been provided and corrected, where required, exclusively by the nomination party. Any mineral lease selected from this Tract and awarded by the Louisiana State Mineral Board shall be without warranty of any kind, either express, implied, or statutory, including, but not limited to, the implied warranties of merchantability and fitness for a particular purpose. Should the mineral lease awarded by the Louisiana State Mineral Board be subsequently modified, cancelled or abrogated due to the existence of conflicting leases, operating agreements, private claims or other future obligations or conditions which may affect all or any portion of the leased Tract, it shall not relieve the Lessee of the obligation to pay any bonus due thereon to the Louisiana State Mineral Board, nor shall the Louisiana State Mineral Board be obligated to refund any consideration paid by the Lessor prior to such modification, cancellation, or abrogation, including, but not limited to, bonuses, rentals and royalties.

NOTE: The Office of Mineral Resources will require a minimum bonus of \$350 per acre and a minimum royalty of 25%.

NOTE: The mineral lease is located within the jurisdiction of the Louisiana Department of Wildlife and Fisheries which has promulgated rules and regulations for the protection of game and wildlife on the aforesaid Tract and, therefore, shall be subject to said rules and regulations, a copy of which shall be attached to the mineral lease. In addition to the specific rules and regulations applicable, the following shall apply regarding operations under this mineral lease:

1. Compliance with the Rockefeller mineral regulations shall be required.
2. No surface activities will be allowed in the vicinity of the Headquarters and associated facilities without written authorization from the Department.
3. Board road access will be required when feasible as determined by the Department.
4. In the event that board road access is not feasible, existing canals and waterways will be utilized to access proposed well locations. A maximum of 350 feet of new canal dredging will be allowed for individual well locations.
5. Compensatory mitigation will be required to offset unavoidable wetland losses.
6. No discharges will be allowed, including produced waters and drilling fluids. A containerized closed loop system will be required.
7. Seasonal restrictions may be imposed within specific management units dependent upon wildlife population levels.
8. Prior to submitting applications for wetland permits to Federal and State permitting agencies the lease holder or shall coordinate project details with the Louisiana Department of Wildlife and Fisheries, Fur and Refuge Division. Contact person for the Department will be Mike Windham at (504) 568-5886 or (225) 342-6122.

NOTE: The State of Louisiana does hereby reserve, and this lease shall be subject to, the imprescriptible right of surface use in the nature of a servitude in favor of the Department of Natural Resources, including its Offices and Commissions, for the sole purpose of implementing, constructing, servicing and maintaining approved coastal zone management and/or restoration projects. Utilization of any and all rights derived under this lease by the mineral lessee, its agents, successors or assigns, shall not interfere with nor hinder the reasonable surface use by the Department of Natural Resources, its Offices or Commissions, as herein above reserved.

TRACT 38721 - Cameron and Vermilion Parishes, Louisiana

A portion of all State owned lands, including high and marsh lands and land now or formerly constituting the beds and bottoms of any water body, within the boundaries of the Rockefeller Wildlife Refuge and Game Preserve, not presently under mineral lease and cross hatched by the State of Louisiana on November 8, 2006, situated in Cameron and Vermilion Parishes, Louisiana, and described as follows: Beginning at a Point having Coordinates of X = 1,591,493.62 and Y = 344,353.52; Thence North 00 degrees 06 minutes 37 seconds West 10,741.57 feet to a point having Coordinates of X = 1,591,472.93 and Y = 355,095.07; Thence Northwesterly approximately 2,667 feet to a point on a corner of the Rockefeller Wildlife Refuge and Game Preserve boundary; Thence along said Rockefeller Wildlife Refuge and Game Preserve boundary the following course: Easterly approximately 2,649 feet, Southerly approximately 1,332 feet, and Easterly approximately 2,655 feet; Thence leaving said Rockefeller Wildlife Refuge and Game Preserve boundary Southerly approximately 1,329 feet to a point having Coordinates of X = 1,596,792.44 and Y = 355,026.47; Thence South 00 degrees 55 minutes 10 seconds West 1,311.92 feet to a point having Coordinates of X = 1,596,771.39 and Y = 353,714.72; Thence South 9,361.20 feet to a point having Coordinates of X = 1,596,771.39 and Y = 344,353.52; Thence West 5,277.77 feet to the point of beginning, **LESS AND EXCEPT** any portion of the above described tract which may fall outside of the boundaries of the Rockefeller Wildlife Refuge and Game Preserve, containing approximately **1,544 acres**, all as more particularly outlined on a plat on file in the Office of Mineral Resources, Department of Natural Resources. All bearings, distances and coordinates are based on Louisiana Coordinate System of 1927, (South Zone).

NOTE: The above description of the Tract nominated for lease has been provided and corrected, where required, exclusively by the nomination party. Any mineral lease selected from this Tract and awarded by the Louisiana State Mineral Board shall be without warranty of any kind, either express, implied, or statutory, including, but not limited to, the implied warranties of merchantability and fitness for a particular purpose. Should the mineral lease awarded by the Louisiana State Mineral Board be subsequently modified, cancelled or abrogated due to the existence of conflicting leases, operating agreements, private claims or other future obligations or conditions which may affect all or any portion of the leased Tract, it shall not relieve the Lessee of the obligation to pay any bonus due thereon to the Louisiana State Mineral Board, nor shall the Louisiana State Mineral Board be obligated to refund any consideration paid by the Lessor prior to such modification, cancellation, or abrogation, including, but not limited to, bonuses, rentals and royalties.

NOTE: The Office of Mineral Resources will require a minimum bonus of \$350 per acre and a minimum royalty of 25%.

NOTE: The mineral lease is located within the jurisdiction of the Louisiana Department of Wildlife and Fisheries which has promulgated rules and regulations for the protection of game and wildlife on the aforesaid Tract and, therefore, shall be subject to said rules and regulations, a copy of which shall be attached to the mineral lease. In addition to the specific rules and regulations applicable, the following shall apply regarding operations under this mineral lease:

1. Compliance with the Rockefeller mineral regulations shall be required.
2. No surface activities will be allowed in the vicinity of the Headquarters and associated facilities without written authorization from the Department.
3. Board road access will be required when feasible as determined by the Department.
4. In the event that board road access is not feasible, existing canals and waterways will be utilized to access proposed well locations. A maximum of 350 feet of new canal dredging will be allowed for individual well locations.
5. Compensatory mitigation will be required to offset unavoidable wetland losses.
6. No discharges will be allowed, including produced waters and drilling fluids. A containerized closed loop system will be required.
7. Seasonal restrictions may be imposed within specific management units dependent upon wildlife population levels.
8. Prior to submitting applications for wetland permits to Federal and State permitting agencies the lease holder or shall coordinate project details with the Louisiana Department of Wildlife and Fisheries, Fur and Refuge Division. Contact person for the Department will be Mike Windham at (504) 568-5886 or (225) 342-6122.

NOTE: The State of Louisiana does hereby reserve, and this lease shall be subject to, the imprescriptible right of surface use in the nature of a servitude in favor of the Department of Natural Resources, including its Offices and Commissions, for the sole purpose of implementing, constructing, servicing and maintaining approved coastal zone management and/or restoration projects. Utilization of any and all rights derived under this lease by the mineral lessee, its agents, successors or assigns, shall not interfere with nor hinder the reasonable surface use by the Department of Natural Resources, its Offices or Commissions, as herein above reserved.

which has promulgated rules and regulations for the protection of game and wildlife on the aforesaid Tract and, therefore, shall be subject to said rules and regulations, a copy of which shall be attached to the mineral lease. In addition to the specific rules and regulations applicable, the following shall apply regarding operations under this mineral lease:

1. Compliance with the Rockefeller mineral regulations shall be required.
2. No surface activities will be allowed in the vicinity of the Headquarters and associated facilities without written authorization from the Department.
3. Board road access will be required when feasible as determined by the Department.
4. In the event that board road access is not feasible, existing canals and waterways will be utilized to access proposed well locations. A maximum of 350 feet of new canal dredging will be allowed for individual well locations.
5. Compensatory mitigation will be required to offset unavoidable wetland losses.
6. No discharges will be allowed, including produced waters and drilling fluids. A containerized closed loop system will be required.
7. Seasonal restrictions may be imposed within specific management units dependent upon wildlife population levels.
8. Prior to submitting applications for wetland permits to Federal and State permitting agencies the lease holder or shall coordinate project details with the Louisiana Department of Wildlife and Fisheries, Fur and Refuge Division. Contact person for the Department will be Mike Windham at (504) 568-5886 or (225) 342-6122.

NOTE: The State of Louisiana does hereby reserve, and this lease shall be subject to, the imprescriptible right of surface use in the nature of a servitude in favor of the Department of Natural Resources, including its Offices and Commissions, for the sole purpose of implementing, constructing, servicing and maintaining approved coastal zone management and/or restoration projects. Utilization of any and all rights derived under this lease by the mineral lessee, its agents, successors or assigns, shall not interfere with nor hinder the reasonable surface use by the Department of Natural Resources, its Offices or Commissions, as herein above reserved.

TRACT 38725 - Cameron and Vermilion Parishes, Louisiana

A portion of all State owned

Pilot is 50!

The Cameron Pilot is celebrating its 50th anniversary this month and one of the writers who has made a major contribution to the paper over the years has been W. T. Block of Nederland, Tex. He has written numerous articles on Cameron Parish and Southwest Louisiana history. Although he was born in Port Neches and raised in Nederland, Mr. Block's forebearers were pioneer settlers of Grand Chenier, Cameron and Johnson Bayou and he



W. T. Block

has written extensively of them for the Pilot.

W. T. "Cannonball" Block graduated from Chenier Radio College in Beaumont, earning both a marine radio operator's license and a broadcast or Radiotelephone license.

He operated an amateur radio station (and repair shop) from his home until he enlisted in the Army in August of 1942. Assigned to Camp Wallace at Hitchcock, he put his radio experience to work teaching radio operation and repair. When Camp Wallace closed in 1943, he was transferred to the 78th Signal Co. of the 78th Inf Div.

His unit crossed Belgium under fire, crossed the Rhine and after intense mortar and artillery fire, saw the end of the war on German soil.

After surviving the war, Mr. Block returned to deal with the perils of SE Texas including a near-fatal boiler explosion at a tire plant and three hurricanes. In 1964, he began night classes at Lamar University toward a degree in history.

He received his BA in late 1970 and his MA in January of 1974. His passion for history was demonstrated when his advisor suggested that he stop his thesis with the end of the Civil War. At that point it was already 300 pages in length.

Between 1972 and 1995 Mr. Block published nine books and has several unpublished manuscripts. He began writing East Texas and Louisiana history columns for the *Port Arthur News*, and later the *Beaumont Enterprise*. His column was also picked up by the *Midcountry Chronicle*, *DeQuincy News* and the *Cameron Pilot*. His final article was published Dec. 31, 2005, at his request.

In April of 2003, Mr. Block became Sir Block. In a ceremony in Nederland, Tex. he was appointed Knight of the Royal Order of Orange-Nassau by order of Queen

Beatrix of the Netherlands. Mr. Block's website is www.wtblock.com. Mr. Block will respond to every communication left in the guest book on his website.

(EDITOR'S NOTE-- When the Cameron Pilot was established 50 years ago, the newspaper had "country correspondents" in every community of the parish who reported on births, engagements, weddings, out of town visitors, new cars, etc. Over the years that type of personal reporting has gradually died out and today the Pilot has only one of these community reporters left-- Mrs. Grace Welch of Hackberry. Here is her story.)

Grace B. Welch was born June 27, 1920 in Florence, South Carolina. She met her late husband, Sgt. Vernie R. Welch, Nov. 5, 1945. Vernie had just returned from three years overseas in World War II. Vernie was from Hackberry and was stationed at Parris Island, S.C.

Grace and Vernie were married Feb. 14, 1946. They had five children, four daughters and one son. Patricia Ann Welch Kershaw lives in Houston, Tex. Verna Jean Welch Istre lives in Carllys. Carol (Bobbie) Lynn Welch Fountain lives in Hackberry. Robert Carl (Bo) Welch lives in Reeves. Mary Orelia (Coot) Welch McInnis lives in Hackberry with Grace. Grace has twelve grandchildren and four great-grandchildren.

Grace went to work for Hackberry High School as a cafeteria worker in 1969. She retired after 20 years of cooking for the students at school. While there, many of the students, Grace fed called her MawMaw Grace or Aunt Grace. Many still call her this, even though they are grown with children of their own.

Grace started writing for the Cameron Pilot in 1979, 27 years ago.

Her late husband, Vernie died Jan. 29, 1963.

Grace and her family also went through the trauma of Hurricane Audrey in 1957. Vernie being an oil gauger for Michael T. Halbouty in Houston, Tex., did not leave the wells he worked with every day. They along with their five children weathered the storm at their home in Hackberry.

Grace loves to write and continues to do so, by writing pen pals, working puzzles and writing her Angel poems. To this day, Grace has approximately 195 pen pals throughout the United States as well as, England, New Zealand,

Canada and Australia. She has also been blessed to be able to meet some of her pen pals. She started pen-paling 15 years ago when she had her first knee replacement surgery.

Grace's home as so many was destroyed by Hurricane Rita. She evacuated to Toledo Bend with her daughters Bobbie Fountain and Coot McInnis. She stayed there for almost two weeks then went on to stay with her oldest daughter, Pat Kershaw in



Grace B. Welch

Houston. She was in Houston for five and a half months.

Before Hurricane Rita, Grace had a collection of Angels. After the storm Bo, Tammy, his wife and Coot tried to salvage what they could of Graces' belongings including her Angels. Unfortunately not many Angels were found.

Grace always sat in a certain spot in her living room, to write her Angel poems, work her puzzles and write her many penpals.

In December, Alvarada, Colorado Police Dept. 911 dispatch center adopted Grace and Coot for Christmas. This was done through "911 Cares". The dispatchers at Cameron Sheriff's Office where Coot worked at were adopted by different agencies across the country, because of Hurricane Rita. Christmas the dispatchers sent Grace a box of Angels of all different shapes, sizes, as a special gift to her as she had lost so many of her collection. Grace returned to Hackberry to a new home, Feb. 7.

Recently after returning from their annual South Carolina vacation, around the anniversary of Rita, Graces' Angels came home. Pat and Coot went through the remaining containers from storage after the storm. One suitcase held 10 Angels and another carton held 14. Also found were a box of Grace's Angel pins. Other than packing up around Grace's favorite corner. Coot does not remember packing any of the other Angels. Only one Angel statue has a broken wing, all the others were in wonderful condition. Other treasures located was Vernie's military flag, a cook's hat that Vernie had while serving in World War II, and also a bonnet that Grace's mom had made before her death in 1981.

Grace believes in Angels. She writes it often in her Angel poems. One of Grace's poems, "Precious Angels" was accepted and published in the Poetry Guide on Jan. 6, 1998.

Pilot was 3rd paper to serve the Parish

By JERRY WISE

Although the Cameron Pilot has been the only newspaper published in Cameron Parish during the past 50 years, there were at least two other papers published here years ago.

A newspaper, also called the Cameron Pilot, was published in Cameron in the late 1800s. (We did not know about this Pilot when we named our paper.) Mr. and Mrs. Tom Steed had a copy of the first issue of the old Pilot published in 1896. They loaned it to us and we had it framed in our office in Cameron when Hurricane Audrey hit on June 27, 1957. That was the last we saw of it.

Several years ago Clerk of Court Carl Broussard found another copy of the old Pilot published in 1900. It had been in an old file in his office. He framed it and displayed it in the foyer to his office (where hopefully it survived Hurricane Rita.)

Our first issue of the "new" Cameron Pilot published on Oct. 5, 1956, contained a photo of the 1886 Pilot and told how the Steeds had come into possession of the issue.

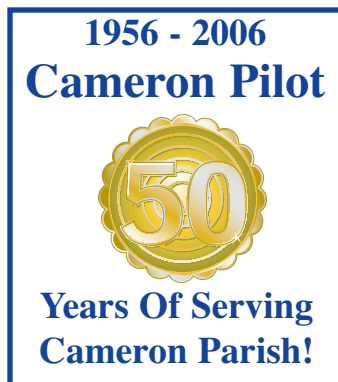
In 1947 Tom Steed was talking to an old gentleman in a local grocery store. The man, Will Frazee, an utility company executive from Indiana, said he was retracing the route of a hunt trip that he had made to Cameron Parish in 1896.

He recalled that while in Cameron he had helped J. C. Stockton to set up a printing press and print the first issue of the Cameron Pilot.

When Mr. Frazee got back home, he sent the Steeds a copy of that first issue of the Pilot in appreciation for their hospitality.

It is not known how long the first Pilot lasted, but we do know that the parish got another paper about 20 years later.

The Cameron Courier, a weekly newspaper, was



printed in Lakeside in the 1920s. The editor was L. J. Nunemaker.

Lakeside, located south of Lake Arthur just inside the Cameron Parish line, apparently was more thriving back then than it is now. At that time much of the travel to and from lower Cameron was on the Mermentau River between Lake Arthur and Grand Chenier. Lakeside was on that route.

The Pilot has several handwritten letters written by Mr. Nunemaker to the Cameron Parish Police Jury asking for their official printing. In one dated Nov. 12, 1921 he wrote:

"To the Honorable Police Jury of Cameron Parish: The Courier has been published for 12 years and after the death of its founder, Dr. C. J. Edwards, has come under the exclusive control of the Lakeside office.

"The parish printing has been done by parties outside the parish heretofore. The law requires it to be done in the parish. I hereby present my application for this work and promise to get it out promptly and in good shape."

It is not known whether the Lakeside Printing Co., the publishers, and Mr. Nunemaker, the editor, were awarded the parish printing or not.

The Courier was long gone when the Pilot was begun in 1956. If any of our readers have information on the Lakeside Courier or the "old" Cameron Pilot, we would like to hear from them.

Program to aid seniors in Cameron

The National Council on Aging announced that it has selected 11 agencies in three states for an innovative pilot program to help hurricane survivors aged 60 and over find benefit programs. It is targeted to those with limited incomes and resources so that they can get back on their feet financially for the long term.

Cameron Parish residents who qualify will be served by the New Orleans Area Council on Aging and the Advocacy Center as one of the 37 parishes in the FEMA Declared Disaster Areas.

As part of this program, agencies will use a special version of NCOA's powerful BenefitsCheckUp online service (available at www.benefitscheckup.org/recovery) to identify the programs for which seniors may qualify.

"Through this innovative program, we hope to reach out and enroll thousands of seniors who continue to need help and support," said James Firman, Ed. D., NCOA president.

The agencies are being encouraged to enroll people in either the Extra Help through Medicare's Prescription Drug Coverage and/or Medicaid, Medicare Savings Programs or Supplemental Security Income (SSI) as well as other benefits programs such as those that help pay for utilities, food or other needs.

With the help of these local agencies and a computer, seniors complete the BenefitsCheckUp questionnaire to find the benefits they may be missing. In just a few short minutes, they receive a report that tells the applicant the federal, state and local benefits programs for which they qualify. For example, BenefitsCheckUp will tell them if they are eligible for the Extra Help available through the Medicare Prescription Drug Coverage and help them to apply for it online.

Snacks, If healthy, important to child's diet,

Healthy snacks are an important part of a child's diet. Because their stomachs are small, youngsters may not eat enough food at meals to get all the nutrients they need in a day. Eating smaller portions more often will help to ensure adequate nutrient intake, according to LSU AgCenter nutritionist Dr. Beth Reames.

Children may want to eat too much of one kind of food, like crackers or cookies, for snacks. Encourage healthy snacking by offering combination snacks, such as whole-grain crackers and low-fat cheese or apple slices with peanut butter. Combination snacks will add more nutrients and help curb hunger until the next meal.

Reames says healthy snack combinations include low-fat yogurt with fruit, sandwiches made with meats or peanut butter on whole-grain bread, sliced tomato with mozzarella cheese, vegetable sticks with low-fat ranch dip, hard-boiled egg with a slice of whole-wheat bread, bowl of whole-grain cereal with low-fat milk and banana slices with peanut butter.

The nutritionist notes that carbohydrates are part of a healthful diet. The food groups that provide carbohydrates - fruits, vegetables, grains and milk - are important sources of many nutrients. Foods with added sugars usually provide calories but few or no nutrients. Reames says it's important to choose carbohydrates wisely.

Follow the Dietary Guidelines recommendations for choosing and preparing healthy snacks for your child: choose fruits, vegetables and whole-grains often; encourage children to consume whole-grain products often (at least half the grains should be whole grains); and choose and prepare foods and beverages with little added sugars or caloric sweeteners.

For information on related family and consumer topics, click on the Family and Home link on the LSU AgCenter homepage, at www.lsuagcenter.com.

Chenier Ecology

By KEVIN SAVOIE

Although there are 18 species of left eyed flounder found in the northern Gulf of Mexico, the Southern Flounder, *Paralichthys lethostigma*, which literally means "parallel fish that forgot its spots," is the one that most people on the Gulf coast think of when speaking of flounders. This fish is highly sought after by both commercial and recreational fishermen. Flounder are prized for their mild flavor and white, flakey flesh. A traditional Louisiana recipe is baked flounder stuffed with crabmeat dressing.

For most of the year, harvest is incidental as fish are scattered throughout the estuary system, from totally fresh water in the upper reaches of river systems to the lower areas of the most salty bays. However, flounders do congregate in large schools just before and during migration offshore for spawning. The Southern Flounder migration in coastal Louisiana waters is close at hand. The nearest thing Louisiana has to a synchronized, en masse fish migration will begin in mid October and last only for a few weeks.

The flounder migration out of the coastal estuaries is one consisting almost entirely of females. They move offshore to join male fish and spawn in December and January. By late February to early March, the females return to the estuaries, where they remain until the following fall. Male flounders stay in offshore waters year-round.

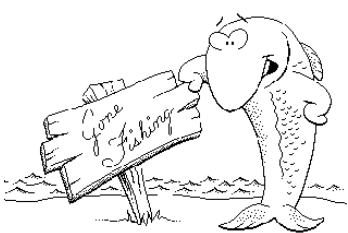
Male flounders are small, seldom growing larger than 10 to 12 inches, but the females grow larger and travel longer distances. Females may reach 23 inches long or more, and spend most of the year in inshore waters, only migrating offshore to spawn. Excellent catches of flounder can be made during this period.

Female Southern Flounder spawn several times during their short annual spawning period, producing about 100,000 eggs each spawn. Spawning seems to be triggered by water temperatures of about 56 F and usually occurs between 5 a.m. and 9 a.m.

After hatching, larval southern flounders grow rapidly in highly saline waters. Young flounders

begin to appear in Louisiana inshore estuaries between January and April, and range from 1/4 inch to 2 inches in length. Like other fish, flounders hatch with one eye on each side of the head. Movement of the right eye to the left side of the head begins when the fish is 1/3 to 1/2 inch long and is complete when the fish is 3/4 inch to 1 inch long. At this same time, the left side develops its dark color and the right side turns white.

(Savoie is a natural resources and fisheries agent based in Lake Charles for the Louisiana Sea Grant Program and the Louisiana State University AgCenter. He can be reached at ksavoie@agcenter.lsu.edu. His column can also be found at <http://www.seagrantfish.lsu.edu/resources/index.html>.)



Cameron Outdoors

By LOSTON MCEVERS

Hunters in our area enjoyed the opening of the second split of dove season, which will run through Nov. 19. Saturday's opening had a few good fields in the Sweetlake area, that produced limits of doves. In lower Cameron the doves are there, but some fields have more than others.

I do know we had three feeders going for the humming birds, about 24 birds average, filling the feeders up two or three times daily. It's time for their migration south, but they brought lots of enjoyment while sitting and watching them.

I still have no reports on any rabbits or squirrels bagged in our lower Cameron Parish area. I do see a few rabbits in the Grand Lake-Sweetlake area. In fact, I've got my eyes on three. This spring they clipped my okra in my garden and are now attacking my cabbage plants. All I can say, after the first frost, "The party's over."

Ducks are still coming into our marshes, traveling the Gibbstown Highway. We're beginning to see ducks along the highway marshes, and this is a good sign. We do need rain, as water in our marshes is extremely low, making it tough to trawl the already clogged mudboat trails. Many of us have to build new blinds, thanks to Rita.

I'm seeing good flocks of speckle bellies coming into the rice fields and that's a good sign as the Snow, Blue, Ross and Speck season opens the same day as duck season.

There are a few deer reports in lower parts of Cameron parish, but hunters tell me there's cover missing, especially for those using tree stands.

FISHING

Anglers fishing the Calcasieu Lake are doing great on both redbfish and speckle trout using artificial baits. Speck limits are fairly easy to fill, working the tides when we a cool front comes in.

There's still caution traveling the lake as there's still restoration work being done

and they're still finding lots of debris on the lake bottom. One of my favorite fishing areas, Commissary Point, where I fished the other day and had no problem, but I talked to an angler at Lake Charles Tackle and he told me those long piers from the camps at the Point, plus other large and small debris is close to the east bank. We still need to be careful.

I was in Cameron the other day and came back through the Trosclair Road area and there were about 30 people throwing cast nets by the dam catching nice, big shrimp. Where you saw a person, you saw a cast net.

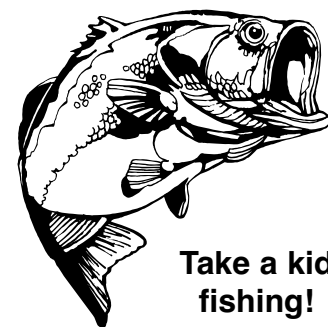
BRIEFS

While fishing Sam Rayburn a couple of weeks ago, there was a party barge with six people aboard and they came about 150 feet from us and they dropped their lines in about 30 feet of water. All you could see was drop and pick up, nice white perch on each drop of the line.

It was a guide barge with one driver and one unhooking and baiting up their customers' hooks. What really got to me was Texas' crappie limit is 25 daily and the minimum length is 10 inches and those guides unhooking the crappie didn't throw many back overboard.

TALK AROUND

Jason Wayne Campbell of Iowa, won the 2006 state duck calling championship at the 38th annual state duck and goose calling contest hosted by the Gueydan Duck Festival Association. He also won the speckle belly event.



Take a kid fishing!





HELPING PLAN the third annual Hackberry Holiday Festival set for Dec. 8 were these student committee members, faculty members and Kelly Prasser, Sempra Energy representative (far right.)

Student group to help plan H'berry Festival

The Hackberry High School faculty recently announced the formation of a student advisory committee to take leadership of the 3rd Annual Hackberry Holiday Festival scheduled for Friday, Dec. 8 from 5 to 8 p.m. at the Hackberry Community Center.

The student committee under the direction of school librarian, Kathy Helmer, will be responsible for all aspects of the event that will once again be underwritten by founding sponsor, Cameron LNG.

"The intention of this event has always been to celebrate the richness of this community and we are thrilled to be partnering with Hackberry High School and

its students to host this year's event, announced Kelly Prasser, Sempra Energy's Community Relations manager.

Sempra Energy is the parent company of the Cameron LNG terminal presently under construction just north of Hackberry.

At the request of school parent Gwen Poole, Principal LaBove and Helmer organized the group of student council members and club officers to work with Cameron LNG representatives, administrators, teachers and community leaders on this year's event.

"Our kids aren't given many opportunities to play active roles in community involvement and this is a

great chance for them to exhibit their leadership skills," said Helmer.

Cameron LNG first hosted this event in 2004 at the community center providing a fun-filled holiday event for all in the community. Last year's event focused more on the students at both Hackberry and Johnson Bayou schools due to Hurricane Rita. This year the event will move back to the community center and appeal to everyone in the community.

Targa Midstream Services has confirmed their participation as a sponsor and students will also be soliciting support from other local businesses.

"While we are so proud to have Cameron LNG as the flagship sponsor and Targa's involvement, we are going to

Sammis is chosen on NAST team

Former Grand Lake High School All-State pitcher, Cheri Sammis, granddaughter of Bob and Sue Guillory and Burt and Bonnie Sammis and current Lafayette high senior, has been named to the North American Select Team to represent North America at the Cup in The Netherlands.

Sammis and her teammates will have the opportunity to play teams from The Netherlands, France, United Kingdom, Czech Republic, Germany, Belgium, and Russia, and they will also get to tour Amsterdam and Paris.

look to other local businesses to expand on some of the activities the students are planning," said Helmer.

At the first meeting students and staff presented some initial ideas for the festival. Along with successful highlights from the past two events including Santa photos, cookie decorating and ornament making, the committee agreed to add a karaoke corner, a letter to Santa station, and a holiday market for local merchants to sell their holiday goodies and crafts.

Hackberry High School's Student Council announced that a 25-foot community Christmas tree would be secured outside in front of the Community Center. This will be lit at the end of the event and will stay lit throughout the holiday season.

For more information or to get involved with the 3rd Annual Hackberry Holiday Festival, contact Kathy Helmer or Kevin Moreau at 762-3305.



DONNA GRANGER'S Kindergarten class at Grand Lake Elementary celebrated Mr. B's week by bringing their favorite stuffed friend to school on Wednesday. They also played bear games, sang bear songs, and ate bear snacks.

LIBRARY

Cont. from Page 1

port we will be receiving from SOLINET. Throughout our period of rebuilding, these temporary facilities will provide our returning residents with all the benefits of permanent library sites, adding greatly to the quality of life and stability of our communities."

SOLINET (Southeastern Library Network, Inc.) is an Atlanta-based not-for-profit library cooperative serving the Southeastern US and the Caribbean. A membership network of libraries and other

information organizations, SOLINET works in collaboration with many partners, from local to international.

The Bill and Melinda Gates Foundation, guided by the belief that every life has equal value, works to reduce inequities and improve lives around the world. In the United States, the foundation seeks to ensure that all people have access to great education and to technology in public libraries. Based in Seattle, the foundation is led by CEO Patty Stonesifer and Co-chairs William H. Gates, Sr., Bill Gates, and Melinda French Gates.

Sales & Service — New & Used
We Service All Makes & Models
In Lake Charles
Shetler Lincoln Mercury
478-1720 Or 1-800-460-5461 3201 HWY. 14

Reliable
Month after month
Season after season
McKenzie Pest Control
THE HOME PROTECTORS
Call 478-7826
mckenziepestcontrol.com • Serving SW Louisiana since 1951

CAMERON MOTEL,
RESTAURANT & RV PARK
IS NOW OPEN!
531 Marshall St. • Cameron
337-775-5442

imagine working here

SABINE PASS LNG JOB FAIRS

At Cheniere, we are working hard to construct and develop infrastructure and services that will ensure a clean fuel source for North America and we need help from qualified, dedicated individuals in the area. During our upcoming job fairs we will be looking for candidates with experience as operators or maintenance technicians in industrial facilities.

Imagine working for Cheniere, a company dedicated to providing a great work environment for its employees. Come meet us at one of our events, bring your resume and learn more about our excellent organization.

1-866-WORK-LNG
or
1-866-967-5564

Hackberry Center
Thursday October 12
2:00 p.m. – 8:00 p.m.
986 Main St.
Hackberry, Louisiana 70645

Texas Workforce
Tuesday October 17
2:00 p.m. – 8:00 p.m.
3901 Twin City Hwy
Port Arthur, Texas 77642

Lake Charles Civic Center
Saturday October 21
10:00 a.m. – 4:00 p.m.
900 Lakeshore Drive
Lake Charles, Louisiana 70602



www.cheniere.com